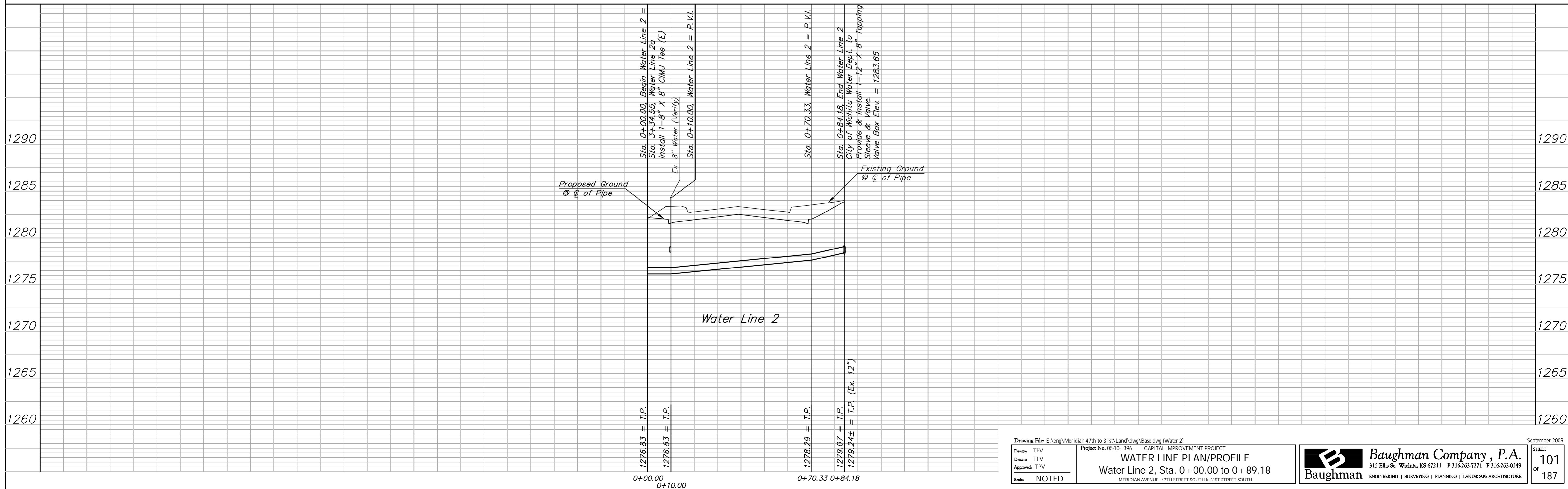
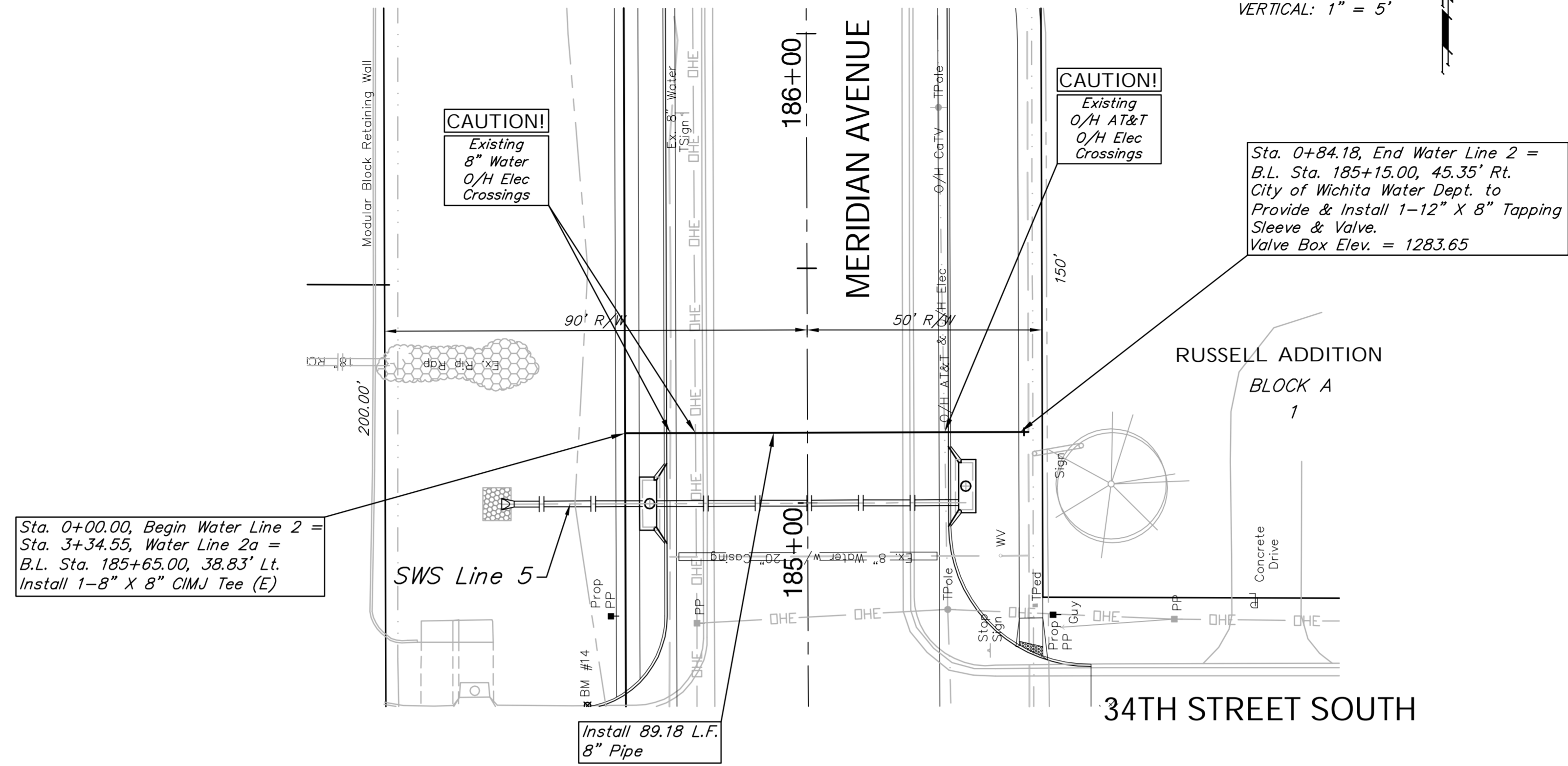


BENCHMARK:  
 BM #14 - "C" Chiseled in the Top of the North Curb Return of the  
 Second Concrete Entrance North of Interstate 235  
 on the West Side of Meridian  
 Sta. 184+57, 47' Lt.  
 Elev. = 1282.75 MSL

SCALE:  
 HORIZONTAL: 1" = 20'  
 VERTICAL: 1" = 5'



Drawing File: E:\eng\Meridian\47th to 31st\Land\dwg\Base.dwg (Water 2)

Project No. 0510E396 CAPITAL IMPROVEMENT PROJECT

Design: TPV  
 Drawn: TPV  
 Approved: TPV  
 Scale: NOTED

WATER LINE PLAN/PROFILE  
 Water Line 2, Sta. 0+00.00 to 0+89.18  
 MERIDIAN AVENUE - 47TH STREET SOUTH to 31ST STREET SOUTH

**Baughman Company, P.A.**  
 315 Ellis St., Wichita, KS 67211 P 316-262-7171 F 316-262-0149  
 ENGINEERING | SURVEYING | PLANNING | LANDSCAPE ARCHITECTURE

September 2009

SHEET  
 101  
 OF  
 187