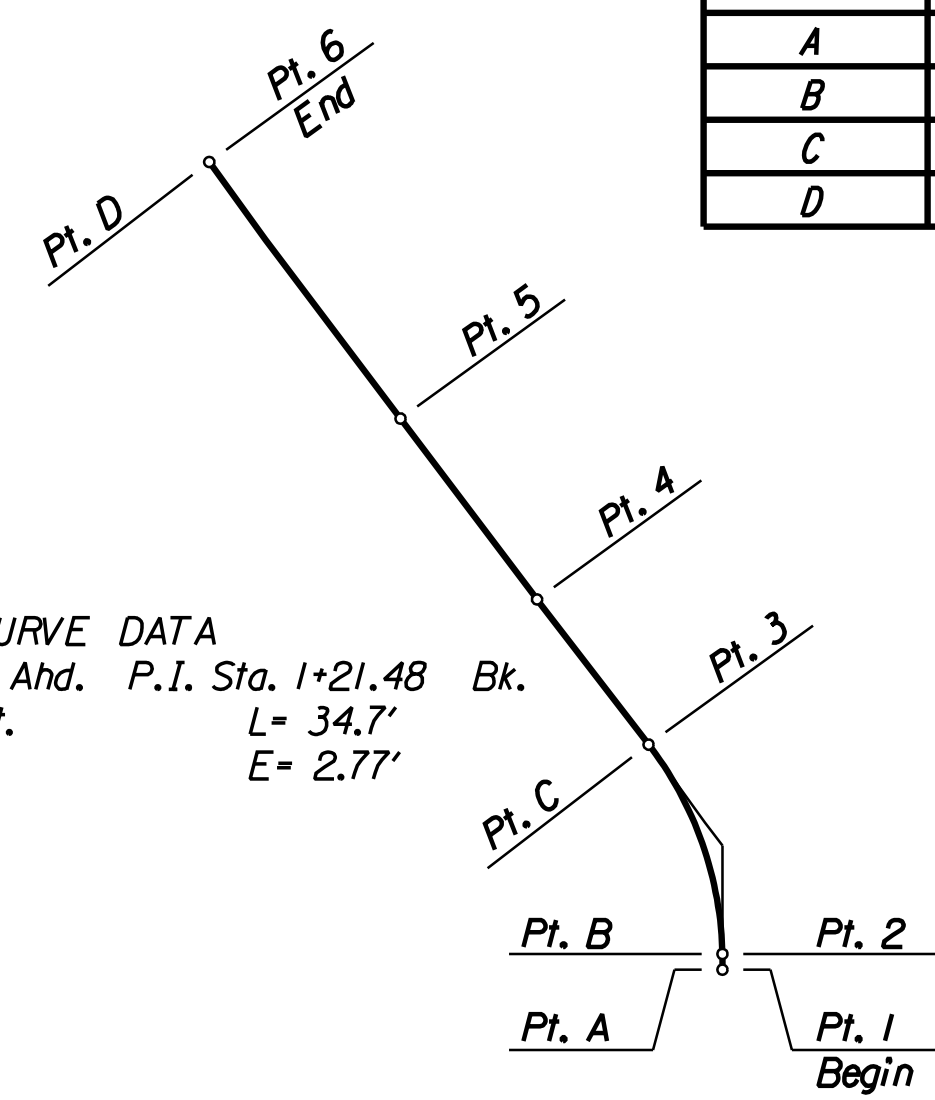


SUMMARY OF QUANTITIES		
ITEM	QUANTITY	UNIT
Removal of Existing Structure	1	L.S.
Common Excavation	826	C.Y.
Compaction (Type AA)(MR3-3)	62	C.Y.
Riprap (Heavy Stone)(24")	366	S.Y.
Concrete (Grade 4.0)(AE)	177.0	C.Y.
Reinforcing Steel (Epoxy)	20,860	Lbs.
Precast Sections (16'x9')	60	L.F.
Class III Excavation	404	C.Y.
Surfacing Material (6")(AB-3)	360	S.Y.
Sod (Bermuda)	1,005	S.Y.
Foundation Stabilization	24	C.Y.
Concrete for Seal Course (Set)	12	C.Y.
Granular Backfill (Wingwalls)(Set)	126	C.Y.
Traffic Control	1	L.S.
Bridge Markers	4	Each
Mobilization	1	L.S.
Clearing and Grubbing	1	L.S.
Field Office and Lab (Type A)	1	E.A.
Erosion Control	1	L.S.
Bridge Drains	8	Each
Concrete Pavement	173.2	S.Y.
Protective Rail	152.2	L.F.

ALIGNMENT LAYOUT TABLE OF COORDINATES		
LOCATION	NORTH COORDINATE	EAST COORDINATE
A	1704640.9211	1666963.8649
B	1704643.3827	1666963.8649
C	1704676.0957	1666952.3329
D	1704767.1405	1666883.6831

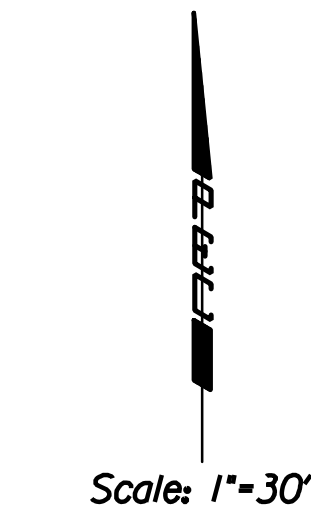
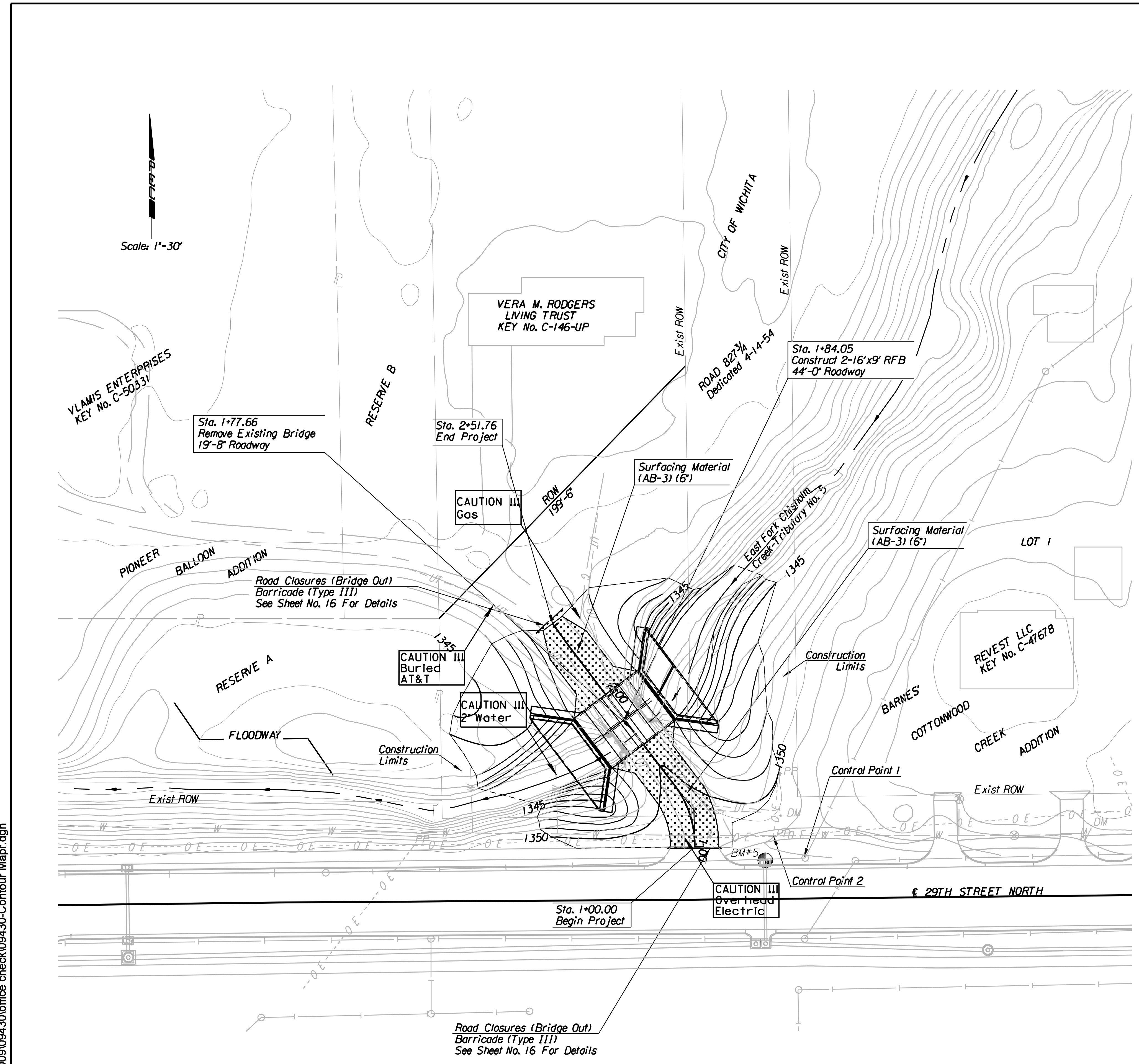
CURVE DATA  
P.I. Sta. 1+20.71 Ahd. P.I. Sta. 1+21.48 Bk.  
 $\Delta = 36^{\circ}18'12''$  Lt. L = 34.7'  
R = 55.67' E = 2.77'  
T = 18.25'



Profile Grade		
POINT	DESCRIPTION	ELEV.
* 1	Start Project - Sta. 1+00.00	1350.12
* 2	PC - Sta. 1+02.46	1350.53
3	PT - Sta. 1+37.73	1350.16
4	RFB Start - Sta. 1+66.34	1349.93
5	RFB End - Sta. 2+01.76	1349.93
* 6	End Project - Sta. 2+51.76	1349.52

\* = Match Existing Ground

Revisions		By	Date
CITY OF WICHITA Br. No. 430400870000271			
Sta. 1+84.05			
<b>CONTOUR MAP</b>			
EAST FORK CHISHOLM CREEK-TRIB. NO. 5 BRIDGE PROJECT NO. 472 84834 SEDGWICK COUNTY			
<b>Professional Engineering Consultants, P.A.</b> 303 S. TOPEKA • WICHITA, KANSAS 67202 316-262-2691 • FAX 316-262-3003			
Designed by	R.J.M	Checked by	R.A.S.
Drawn by	R.J.M	Date	Oct. 2009
		Job No.	09430



CONTROL POINT NO. 1  
N. RIM OF MANHOLE 35' ± S AND 3' ± E  
OF SW CORNER OF LOT 1.  
N: 1704635.2426 E: 1667025.5639

BM 5- BARNES' COTTONWOOD CREEK ADDITION.  
N. RIM OF INLET MANHOLE, 37' ± S AND 19' ± W  
OF SW CORNER OF LOT 1. ELEV. 1350.6185  
N: 1704633.4587 E: 1667003.6692

CONTROL POINT NO. 2  
S. EDGE OF POWER POLE 23' ± S  
AND 13' ± W OF SW CORNER OF LOT 1.  
N: 1704647.0234 E: 1667008.3813

Plotted By: rjm  
File: i:\2009\09430\office check\09430-Contour Mapr.dgn  
Plotted: 11/9/2009