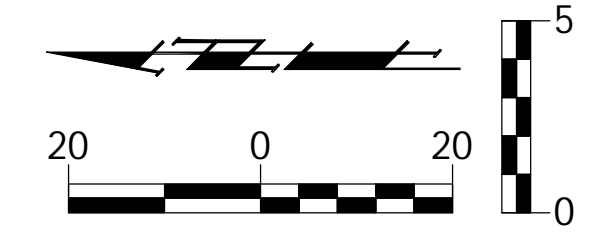
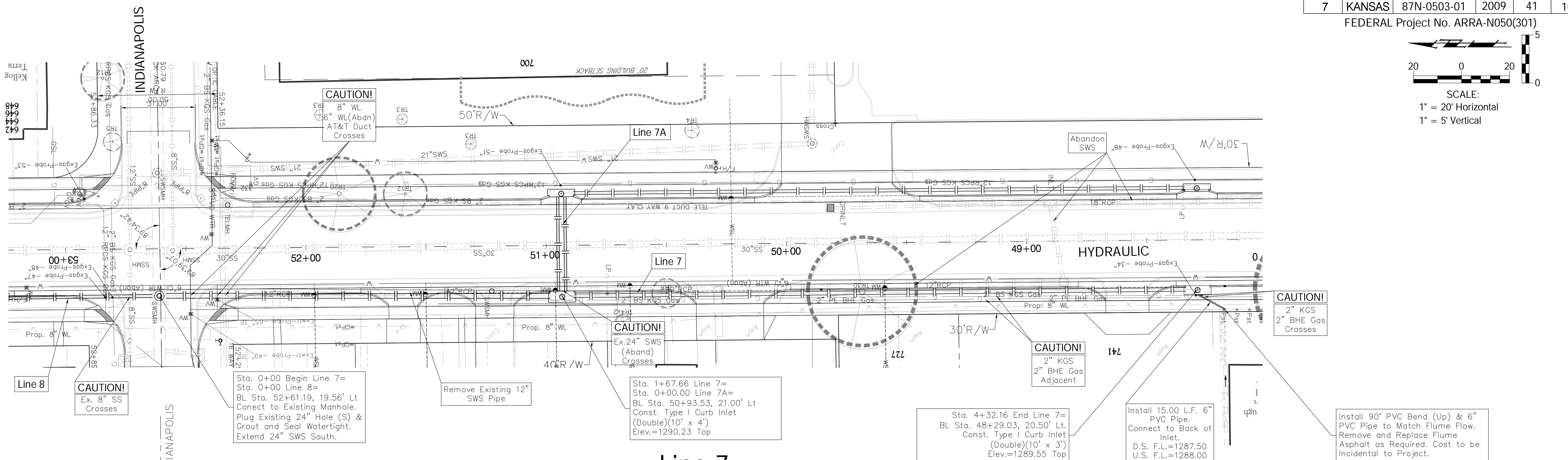


FHWA REGION NO.	STATE	PROJECT NO.	FISCAL YEAR	SHEET NO.	TOTAL SHEETS
7	KANSAS	87N-0503-01	2009	41	101

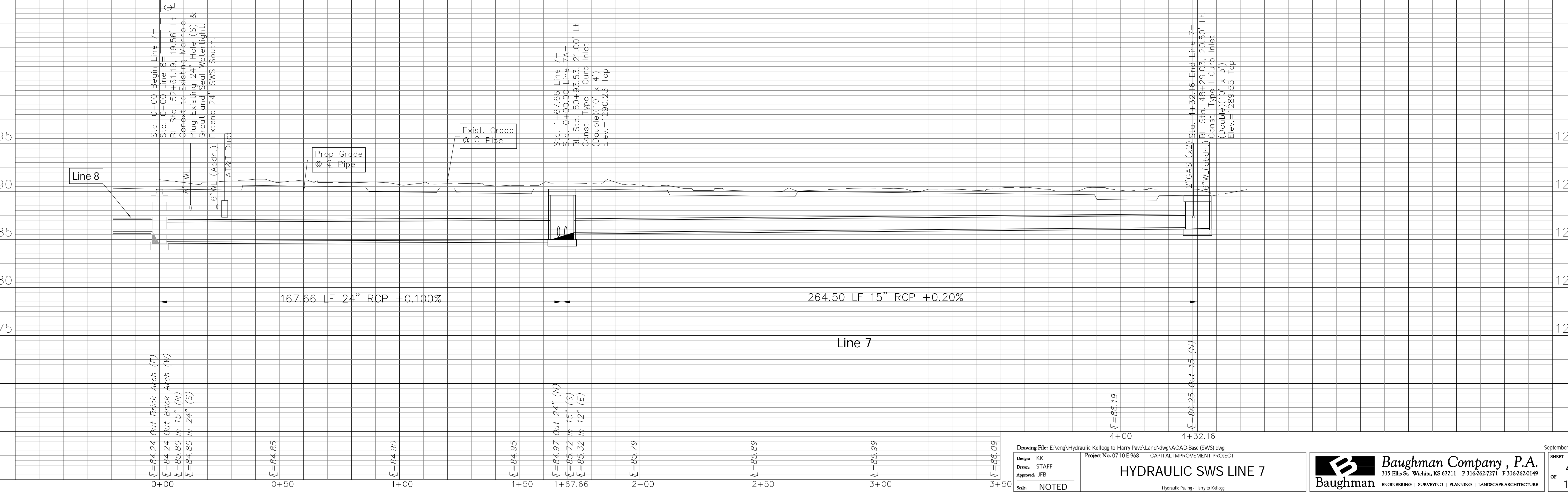
FEDERAL Project No. ARRA-N050(301)



SCALE:  
1" = 20' Horizontal  
1" = 5' Vertical



### Line 7



Drawing File: E:\eng\Hydraulic\Kellogg to Harry Pav\Land\dwg\ACAD Base (SWS).dwg  
 Design: KK  
 Drawn: STAFF  
 Approved: JFB  
 Scale: NOTED

Project No. 0710 E.968 CAPITAL IMPROVEMENT PROJECT  
**HYDRAULIC SWS LINE 7**  
 Hydraulic Paving - Harry to Kellogg

**Baughman Company, P.A.**  
 315 Ellis St. Wichita, KS 67211 P 316-262-7271 F 316-262-0149  
 ENGINEERING | SURVEYING | PLANNING | LANDSCAPE ARCHITECTURE