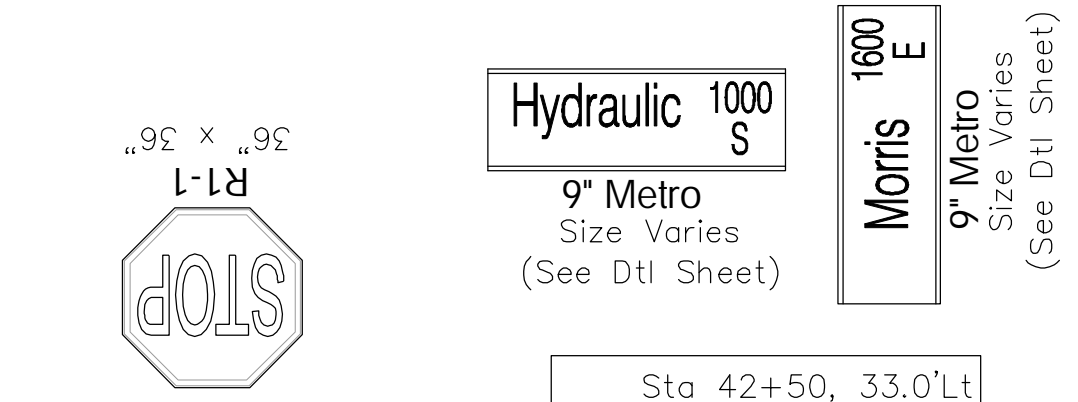
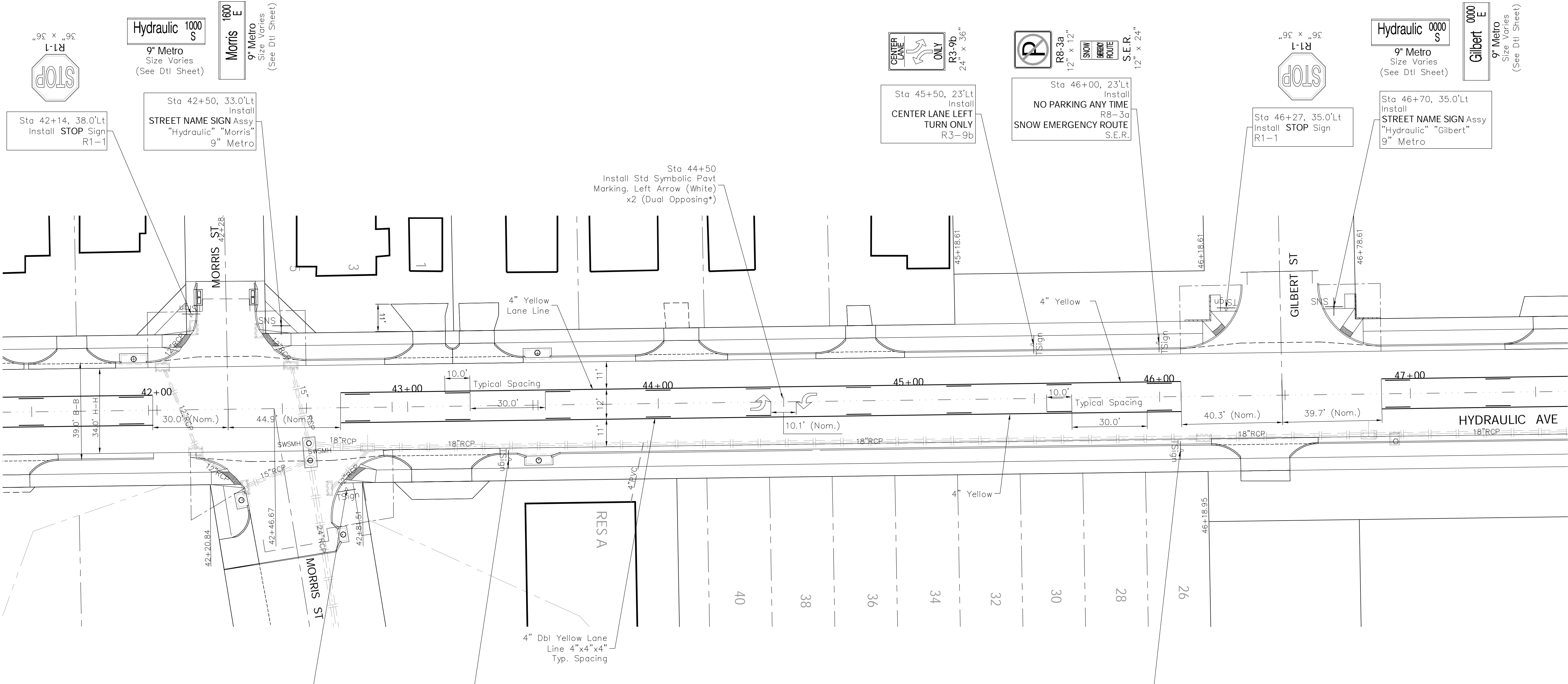
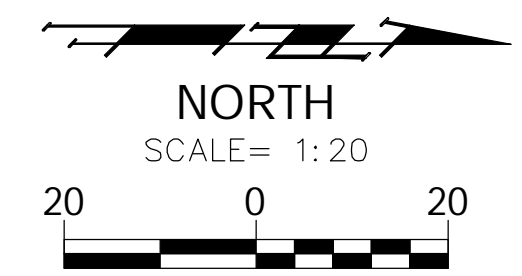


FHWA REGION NO.	STATE	PROJECT NO.	FISCAL YEAR	SHEET NO.	TOTAL SHEETS
7	KANSAS	87N-0503-01	2009	62	101

FEDERAL Project No. ARRA-N050(301)



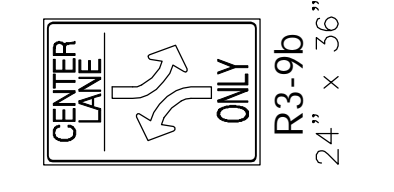
Hydraulic 1000 S  
9" Metro  
Size Varies  
(See Dtl Sheet)

Morris E  
9" Metro  
Size Varies  
(See Dtl Sheet)

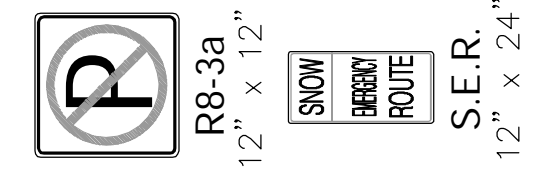
Sta 42+14, 38.0'Lt  
Install STOP Sign  
R1-1

Sta 42+50, 33.0'Lt  
Install STREET NAME SIGN Assy  
"Hydraulic" "Morris"  
9" Metro

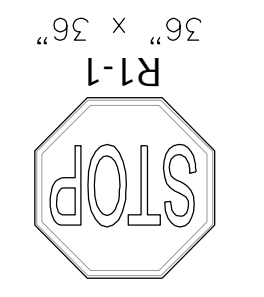
Sta 44+50  
Install Std Symbolic Pavt  
Marking. Left Arrow (White)  
x2 (Dual Opposing\*)



Sta 45+50, 23'Lt  
Install CENTER LANE LEFT  
TURN ONLY  
R3-9b



Sta 46+00, 23'Lt  
Install NO PARKING ANY TIME  
R8-3a  
SNOW EMERGENCY ROUTE  
S.E.R.



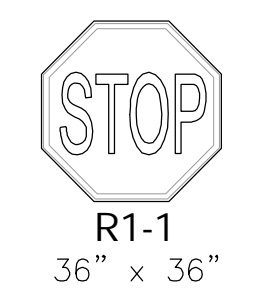
Sta 46+27, 35.0'Lt  
Install STOP Sign  
R1-1

Hydraulic 0000 S  
9" Metro  
Size Varies  
(See Dtl Sheet)

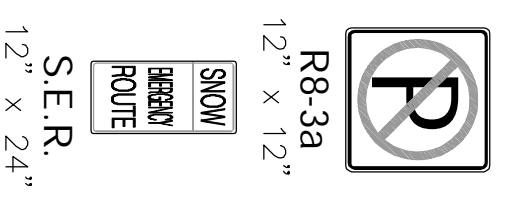
Gilbert E  
9" Metro  
Size Varies  
(See Dtl Sheet)

Sta 46+70, 35.0'Lt  
Install STREET NAME SIGN Assy  
"Hydraulic" "Gilbert"  
9" Metro

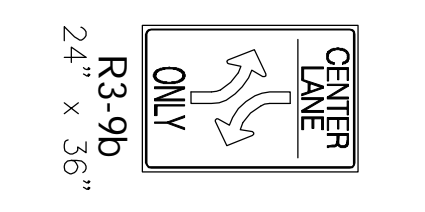
Sta 42+75.0, 33.0'Rt  
Install STOP Sign  
R1-1



Sta 43+40, 23.0'Rt  
Install NO PARKING ANY TIME  
R8-3a  
SNOW EMERGENCY ROUTE  
S.E.R.



Sta 46+08, 23.0'Rt  
Install CENTER LANE LEFT  
TURN ONLY  
R3-9b



Drawing File: E:\eng\Hydraulic Kellogg to Harry Pav\Land\dwg\ACAD-Base (Marking & Signal).dwg

Design: KK  
Drawn: STAFF  
Approved: JFB  
Scale: NOTED

Project No: 07-104-988 CAPITAL IMPROVEMENT PROJECT  
**SIGNING AND MARKING PLAN**  
Hydraulic - Harry to Kellogg

**Baughman Company, P.A.**  
315 Ellis St. Wichita, KS 67211 P 316-262-1271 F 316-262-0149  
ENGINEERING | SURVEYING | PLANNING | LANDSCAPE ARCHITECTURE

September 2009  
SHEET 62 OF 101