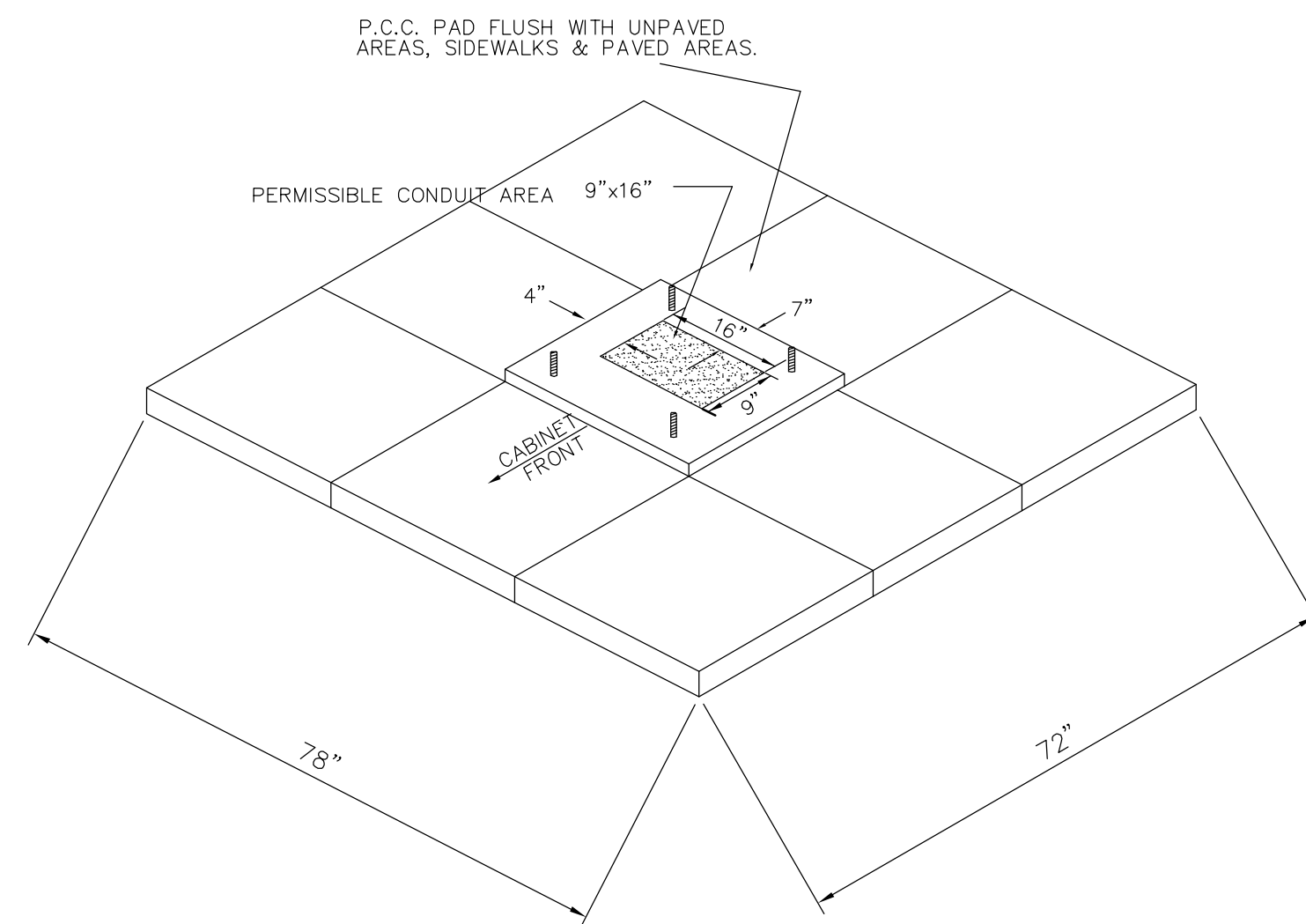
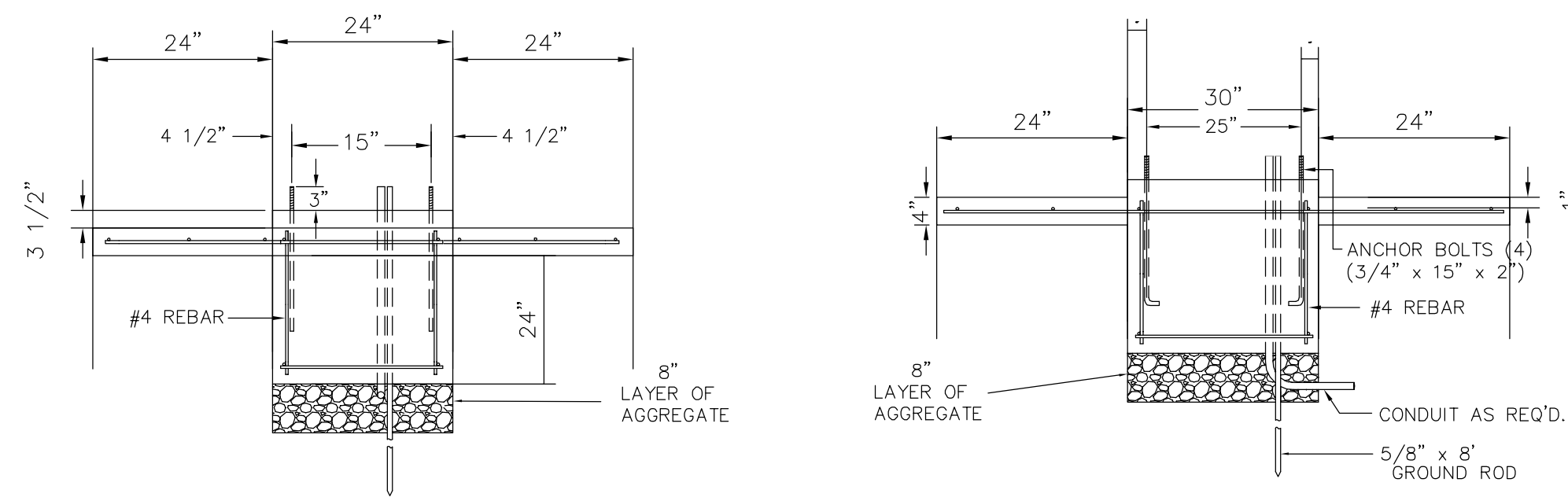
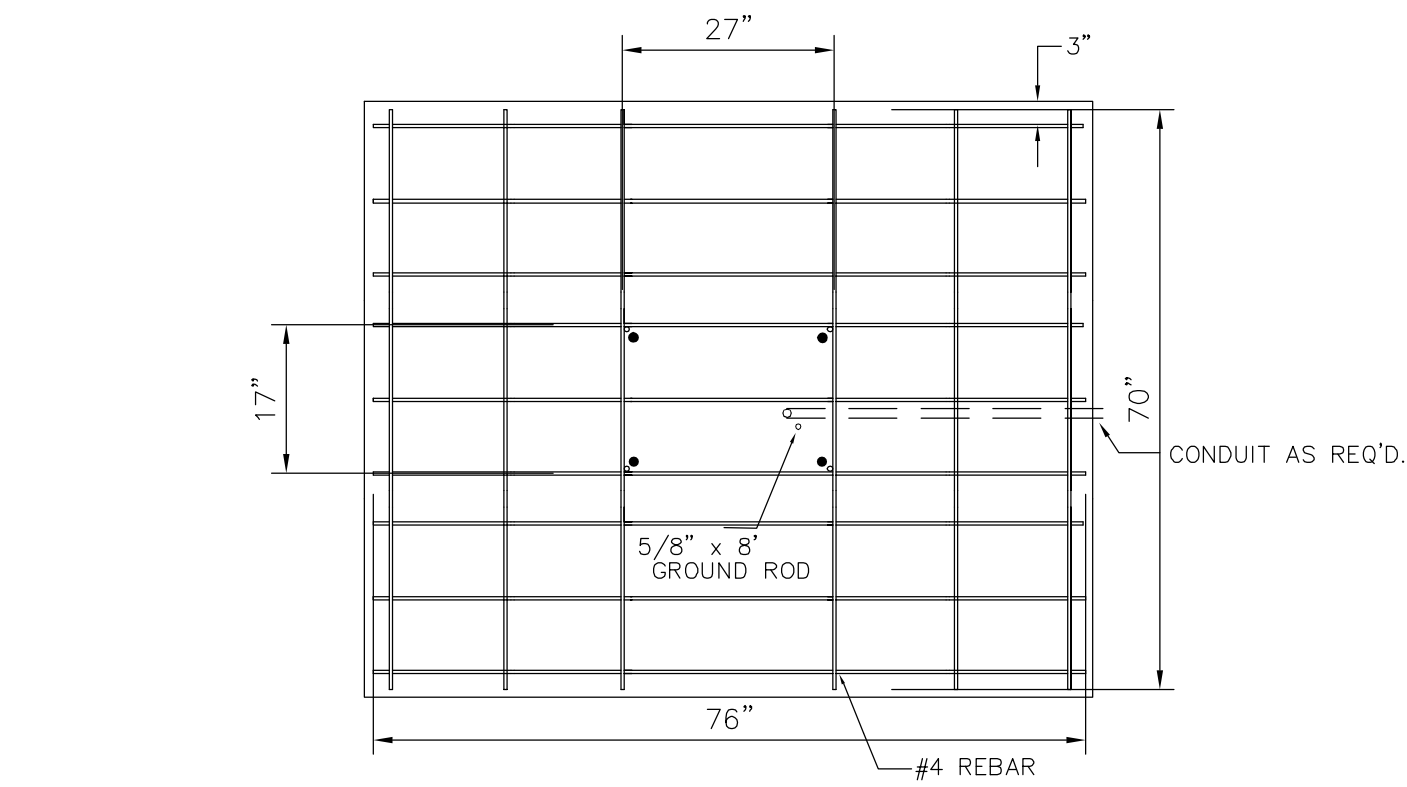


FHWA REGION NO.	STATE	PROJECT NO.	FISCAL YEAR	SHEET NO.	TOTAL SHEETS
7	KANSAS	87N-0503-01	2009	73	101

FEDERAL Project No. ARRA-N050(301)

### 2070 CONTROLLER PAD DETAILS

REBAR SHALL BE ASTM A615M GRADE 300 MEETING THE REQUIREMENTS OF SUBSECTION SPECIFICATIONS.



### NOTES:

#### SERVICE & JUNCTION BOX:

- CONDUIT CONNECTION TO BE FLUSH TO WITHIN 5" OF INSIDE FACE OF SIDE WALL, CONDUIT TO DRAIN INTO SERVICE BOX.
- CONDUIT CONNECTIONS TO SERVICE BOX SHALL BE TERMINATED WITH PLASTIC CABLE BUSHING.
- CONDUIT SHALL BE SEALED WITH APPROVED SEALER AT INSIDE WALL FACE.
- ALL SERVICE & JUNCTION BOXES TO HAVE 8" OF CRUSHED ROCK.

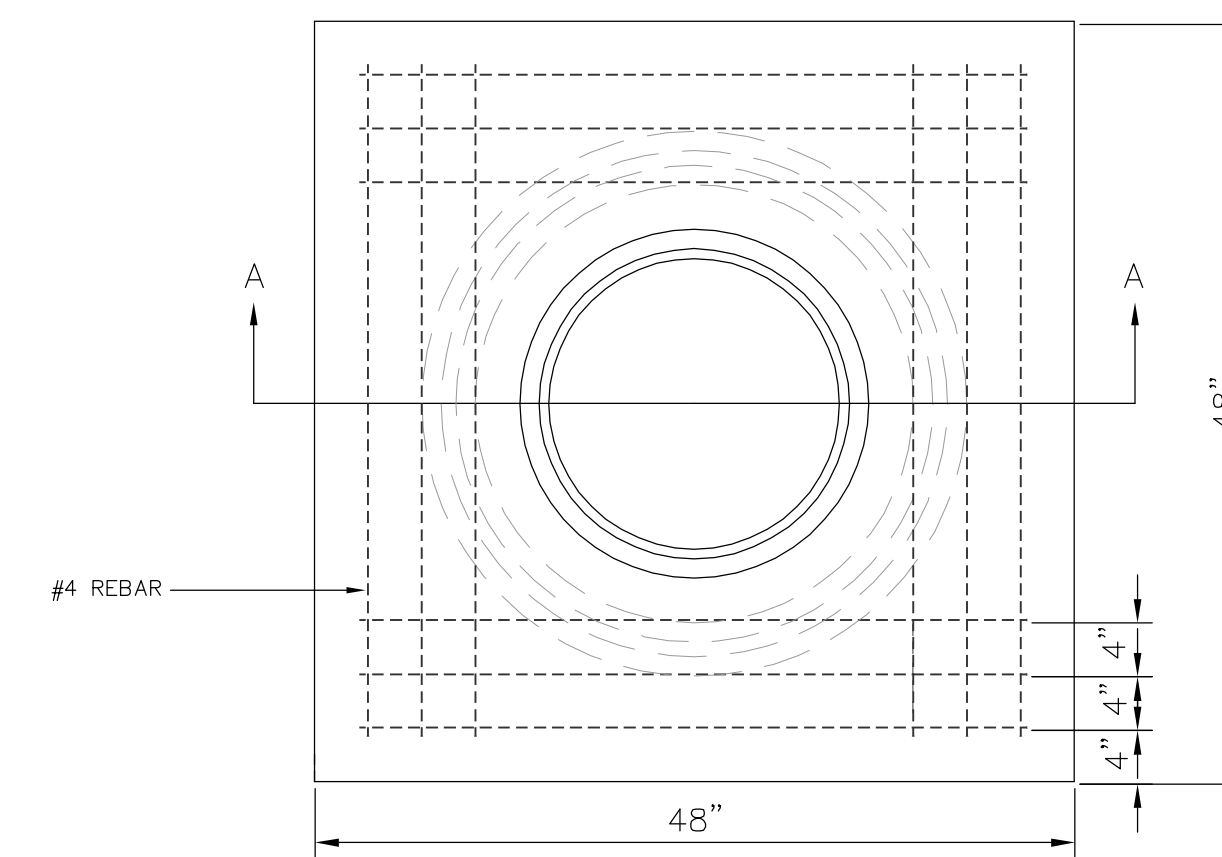
#### TRENCHING:

- DEPTH TO BE 30" MINIMUM WITH ROCK & STUBBLE FREE BACKFILL TO SERVE AS BEDDING MATERIAL. MAINTAIN MINIMUM CONDUIT DEPTH IN TRENCH.
- BACKFILL TO BE COMPACTED IN 6" LOOSE LIFTS BY HAND OR MECHANICAL TAMPING TO A 95% STANDARD DENSITY.

#### CONDUIT:

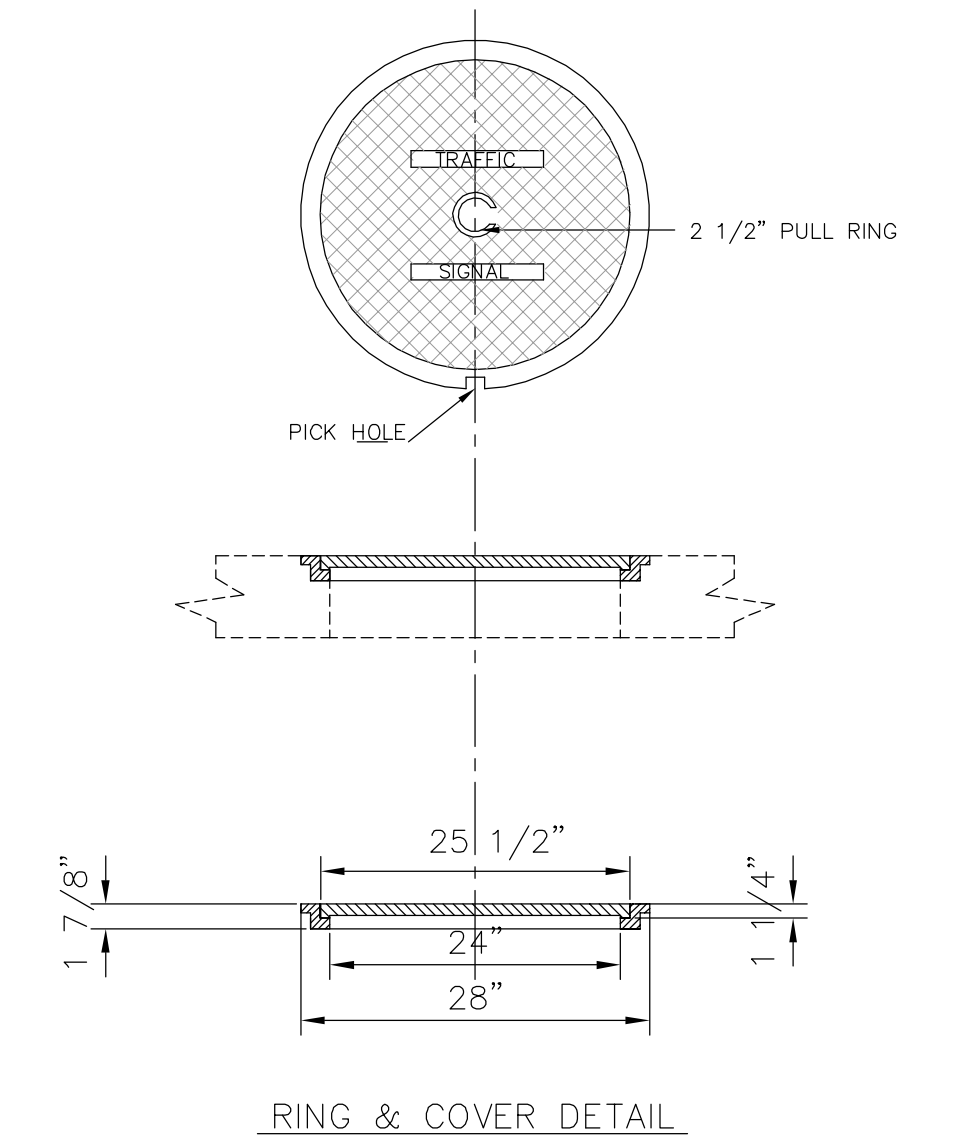
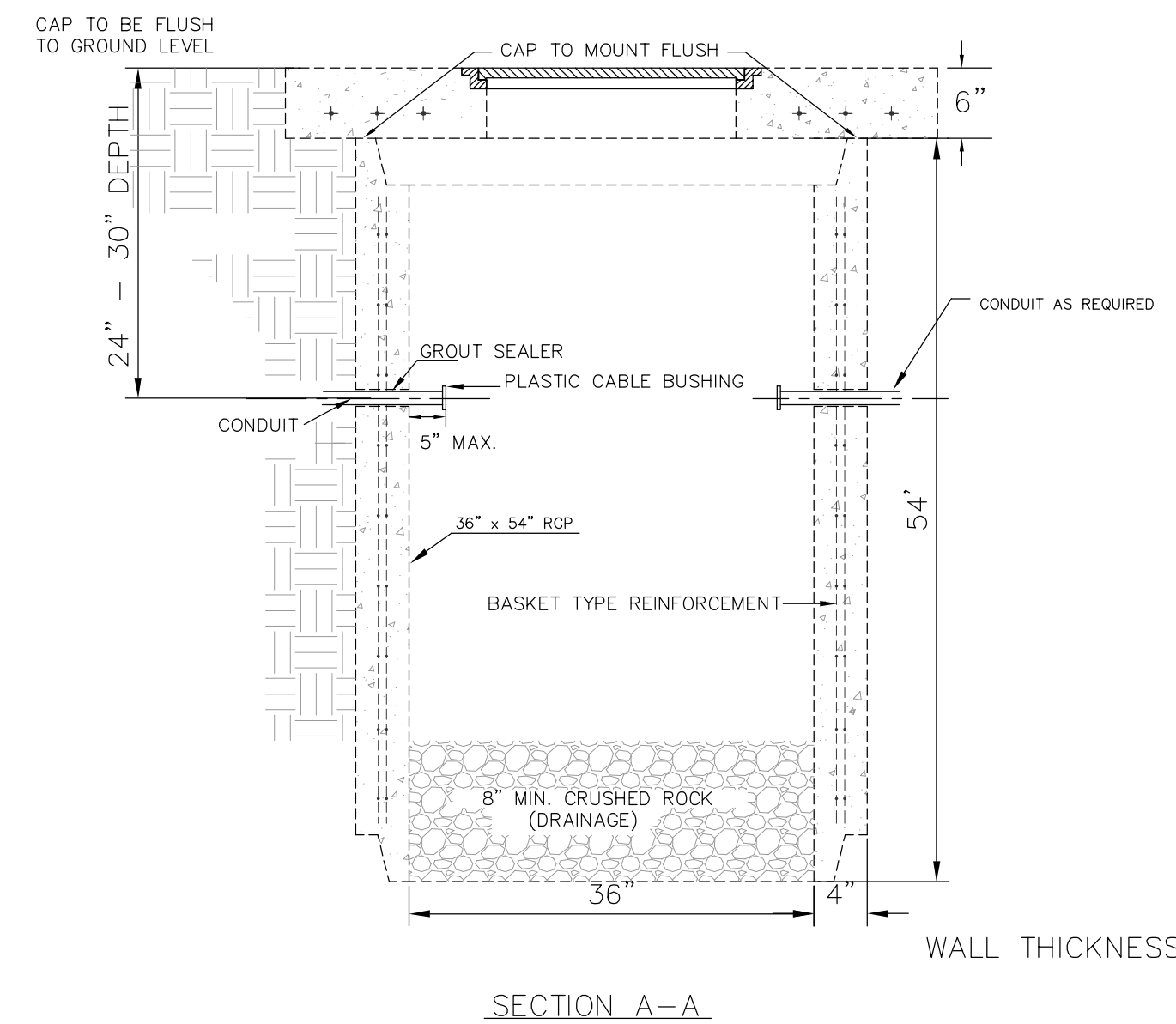
- SLOPE CONDUIT TO DRAIN AS DIRECTED BY THE ENGINEER.
- 3" RIGID STEEL CONDUIT BTWN. SERVICE BOXES.  
1 1/4" " " " BTWN. SERVICE & JUNCTION BOXES.  
3/4" " " " BTWN. JUNCTION BOXES.  
3/4" " " " BTWN. JUNCTION BOX & DETECTOR LOOP SAW CUT

### SERVICE BOX CONSTRUCTION/INSTALLATION DETAILS



PRE-CAST CONCRETE SERVICE BOX

(36" I.D. X 54" RCP) with 6" CAP



Drawing File: E:\eng\Hydraulic Kellogg to Harry Pave\Details\Marking, Sign and Signal Details.Dwg

Design: KK  
Drawn: Staff  
Approved: JFB  
Scale: NOTED

Project No: 07104-988 CAPITAL IMPROVEMENT PROJECT  
Traffic Manhole & Junction Box Details  
Controller Pad & Power Pole Details  
HYDRAULIC AVENUE PAVING - KELLOGG TO HARRY

**Baughman Company, P.A.**  
315 Ellis St. Wichita, KS 67211 P 316-262-7271 F 316-262-0149  
ENGINEERING | SURVEYING | PLANNING | LANDSCAPE ARCHITECTURE

September 2009  
SHEET 73 OF 101