

SW Cor. Sec. 32-T27S-R1W
PI Sta. 10+00.00, Q Pawnee Avenue

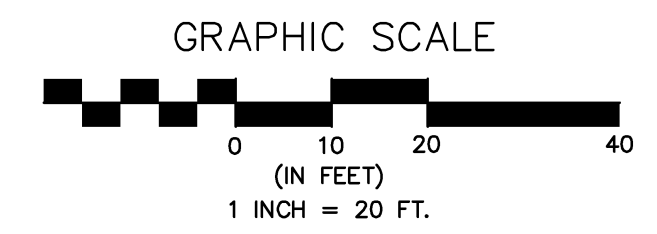
1. N.E. to 3 nails in N. face Power Pole, 58.40'
2. S.E. to 3 nails in N.E. face Power Pole, 59.09'
3. S.W. to Center C.O.W. BM disk, 65.5'

W 1/4 Cor. Sec. 32-T27S-R1W
Sta. 36+00.75, Found 3/4" IP in thimble @ corner

1. W. to PK nail in E. face Hedge tree, 32.8'
2. E.N.E. to 3 nails in W. face Power Pole, 50.57'
3. S.E. to "+" cut on N. end Headwall RCB, 59.65'
4. S.W. to "+" cut on N. end Headwall RCB, 59.60'

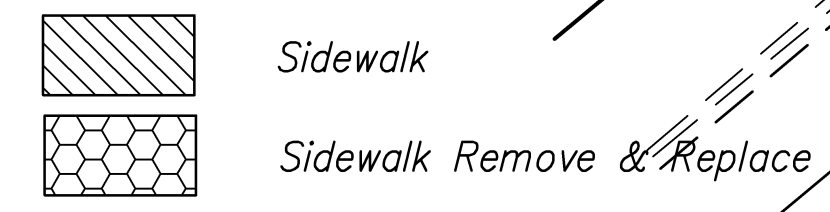
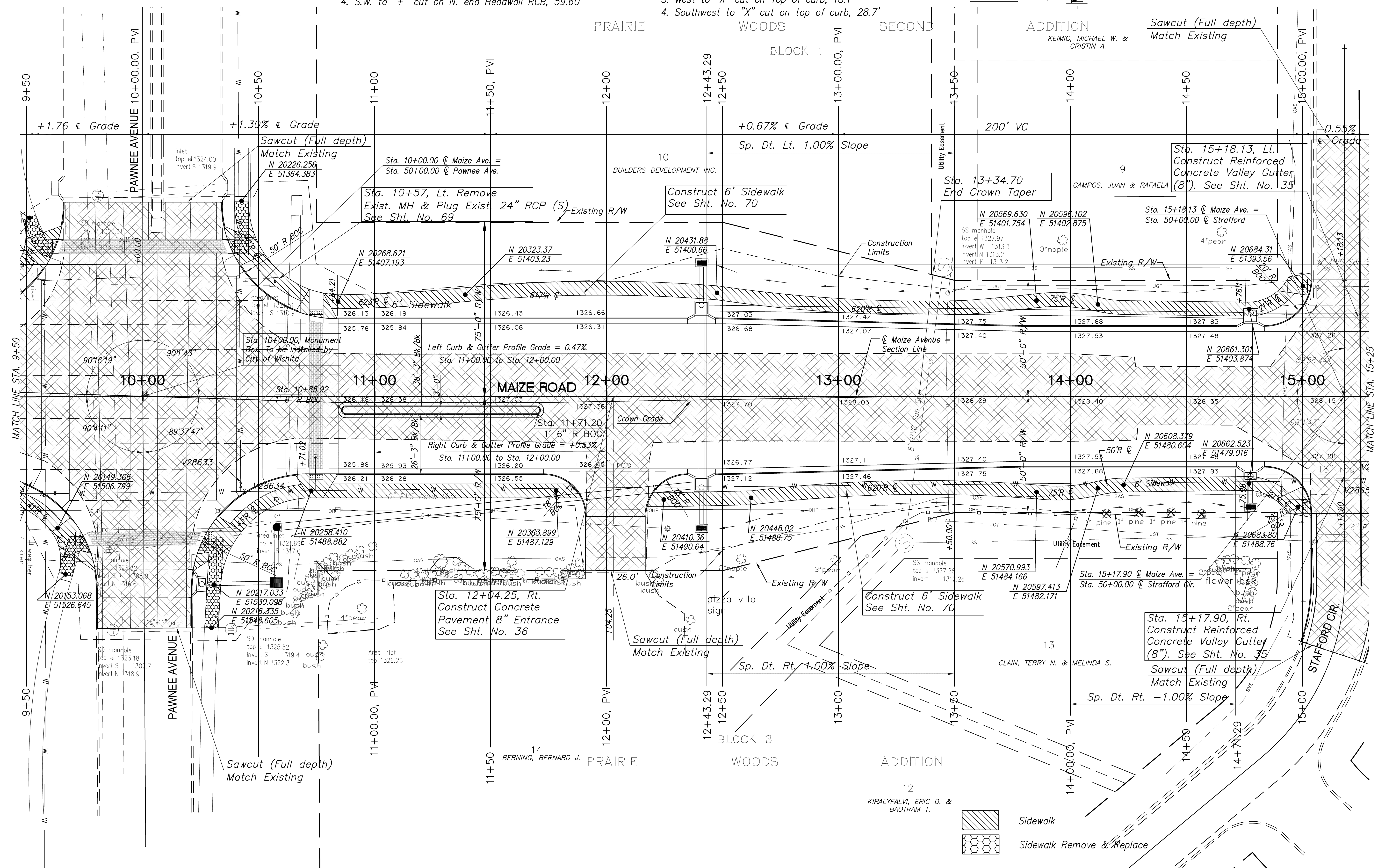
NW Cor. Sec. 32-T27S-R1W
Sta. 62+40.00
Found 1/2" x 24" Rebar with Aluminum Cap Set in Thimble

1. In brick decorative median
2. East to "X" cut on Top of curb, 7.4'
3. West to "X" cut on Top of curb, 18.1'
4. Southwest to "X" cut on top of curb, 28.7'



FHWA REG. NO.	STATE	PROJECT NO.:	YEAR	SHEET NUMBER	TOTAL SHEETS
7	KANSAS	267 N-0502-01	2009	7	226

A.R.R.A.-N050(201)



MAIZE ROAD
WEST KELLOGG AVE. TO PAWNEE AVE.
CITY OF WICHITA, KANSAS
PAVEMENT PLAN 9+50 to 15+25

POE & ASSOCIATES, INC.
CONSULTING ENGINEERS
5940 E. Central, Suite 200 • Wichita, KS 67208-4242
Phone: 316.685-1114 • FAX: 316.685-4444

POE

Engineer: P. FERGUSON
Designer: K. WARREN
KDOT Job No.: 87 N-0502-01 Poe Job No.: 1935
Date: SEPTEMBER 2009

7 of 226