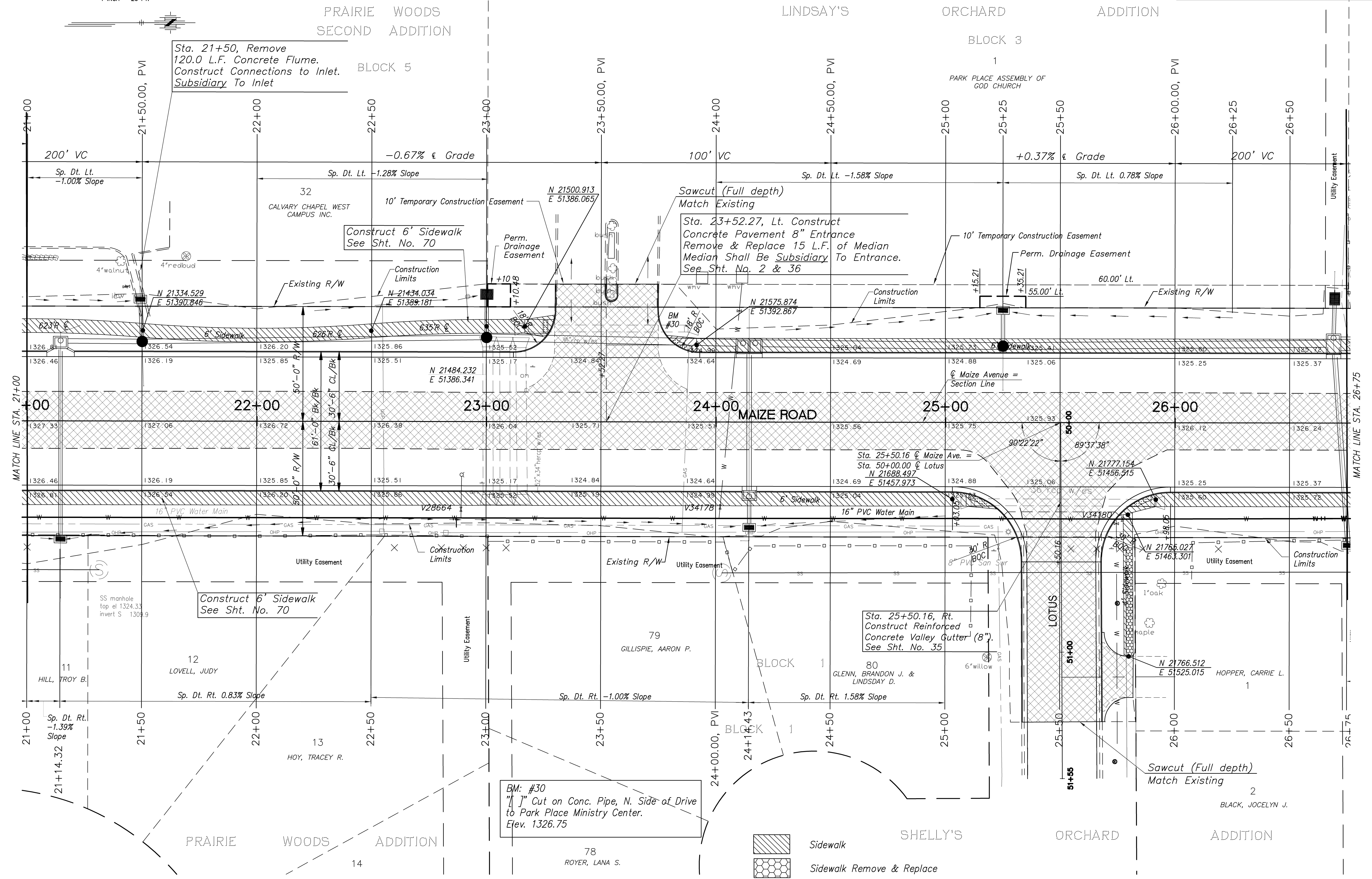


FHWA REG. NO.	STATE	PROJECT NO.:	YEAR	SHEET NUMBER	TOTAL SHEETS
7	KANSAS	87 N-0502-01	2009	9	226
A.R.R.A-N050(201)					



- Sidewalk
- Sidewalk Remove & Replace

MAIZE ROAD	WEST KELLOGG AVE. TO PAWNEE AVE.	CITY OF WICHITA, KANSAS	PAVEMENT PLAN 21+00 to 26+75
POE & ASSOCIATES, INC. CONSULTING ENGINEERS 5940 E. Central, Suite 200 • Wichita, KS 67208-4142 Phone 316.635.4114 • FAX 316.685.4444			
FINAL Engineer: P. FERGUSON Designer: K. WARREN KDOT Job No.: 87 N-0502-01 Date: SEPTEMBER 2009	Poa Job No.: 19315	Sheet 9 of 226	