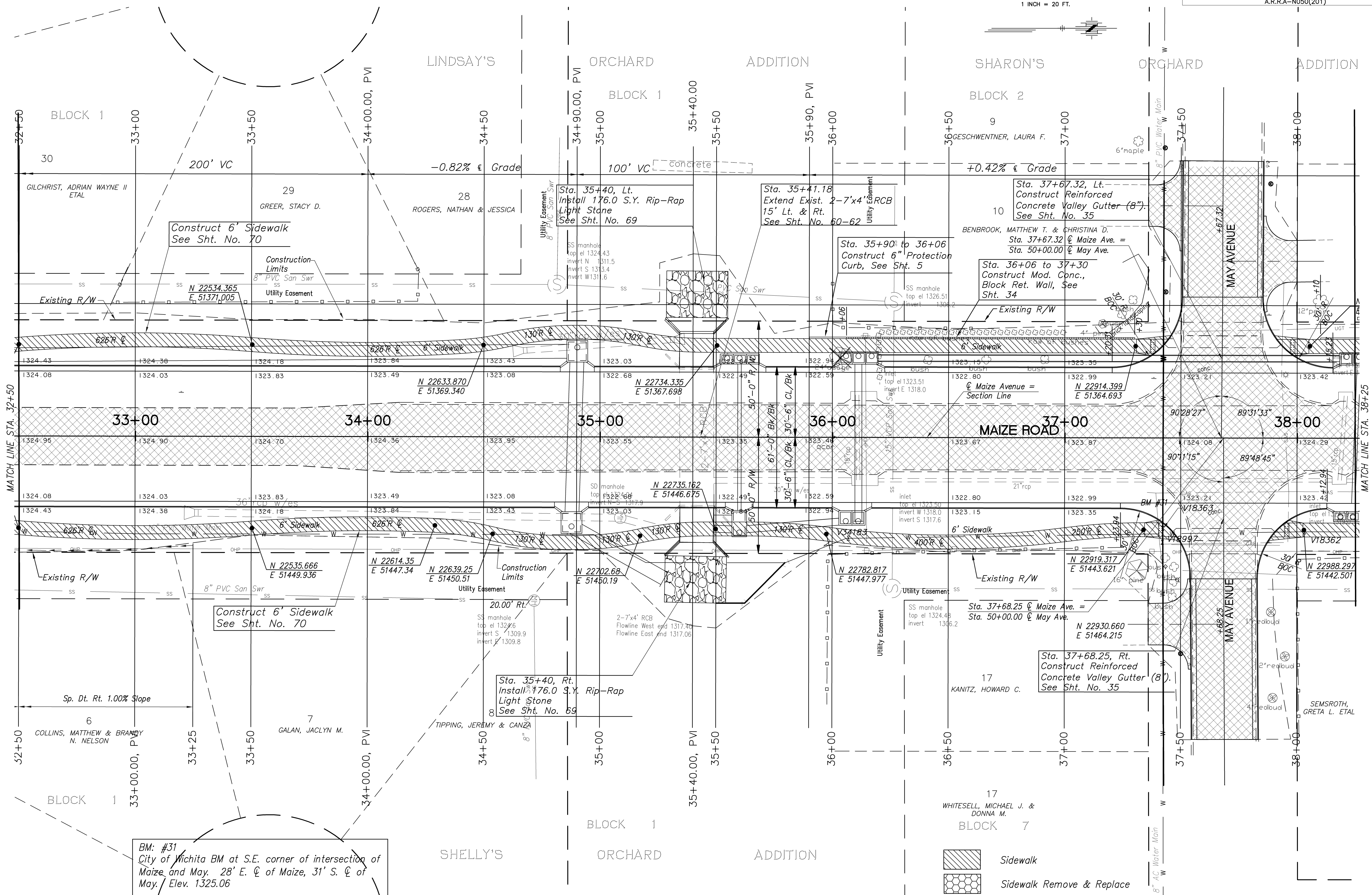
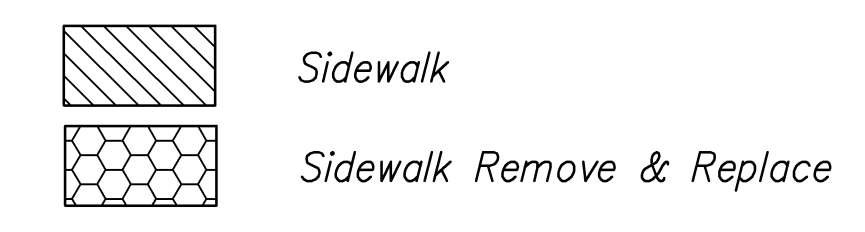


FHWA REG. NO.	STATE	PROJECT NO.:	YEAR	SHEET NUMBER	TOTAL SHEETS
7	KANSAS	87 N-0502-01	2009	11	226
A.R.R.A-N050(201)					



BM: #31
City of Wichita BM at S.E. corner of intersection of Maize and May. 28' E. ϕ of Maize, 31' S. ϕ of May. Elev. 1325.06



No.	Date	By	Approved	Revision

POE & ASSOCIATES, INC.
 CONSULTING ENGINEERS
 5940 E. Central, Suite 200 • Wichita, KS 67208-4242
 Phone: 316.685.4114 • FAX: 316.685.4444

Engineer: P. FERGUSON Designer: K. WARREN	KDOT Job No.: 87 N-0502-01 Project: POE Job No.: 1935 Date: SEPTEMBER 2009
--	--

SHEET 11 of 226