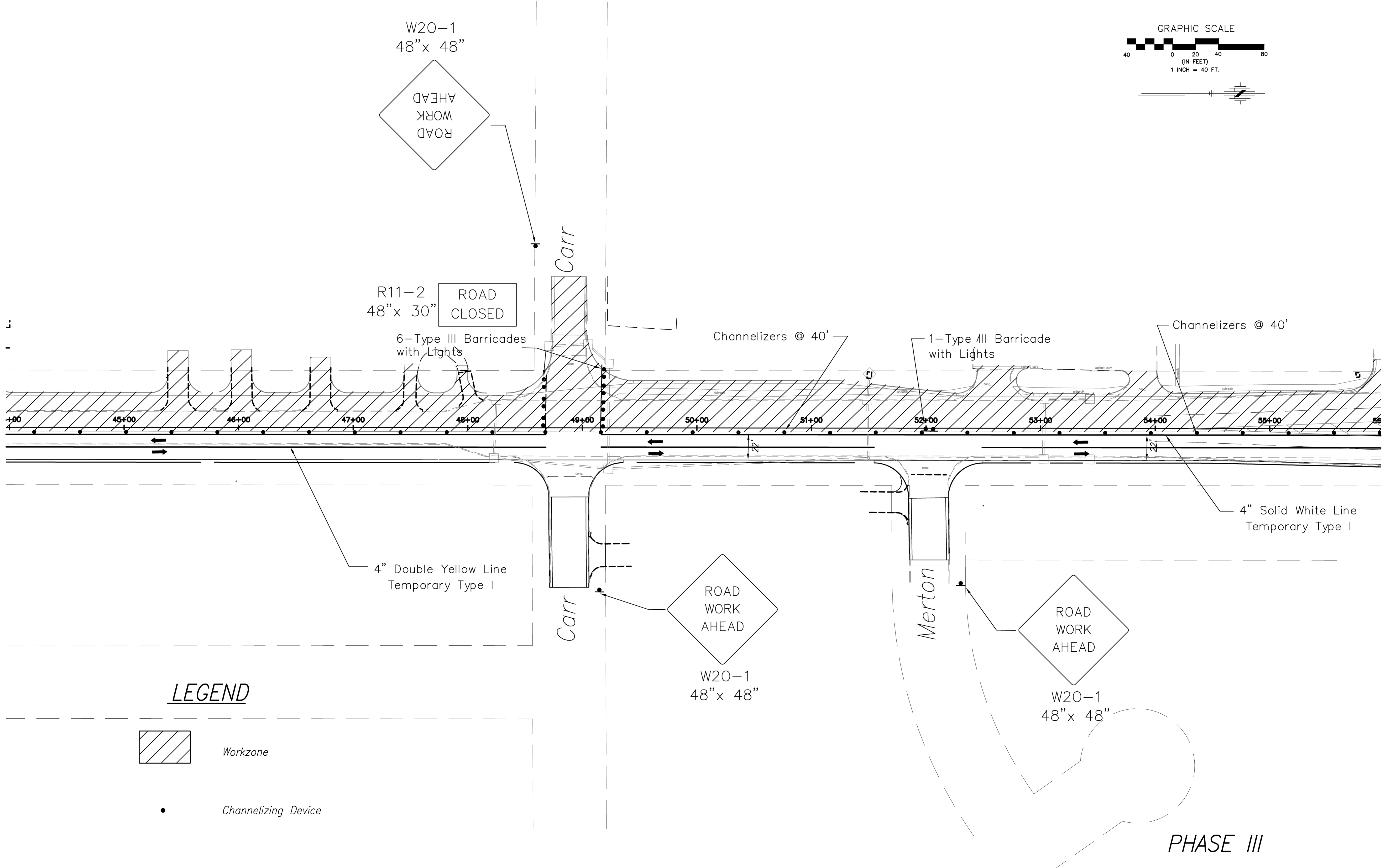
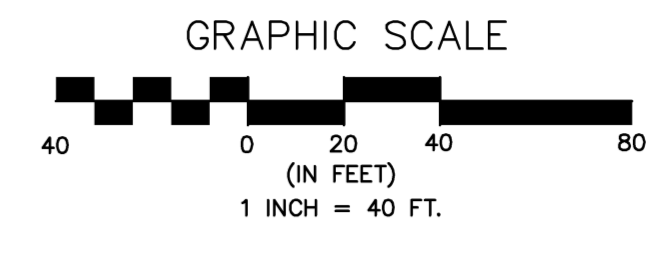


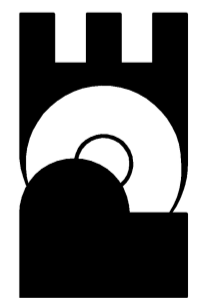
FHWA REG. NO.	STATE	PROJECT NO.:	YEAR	SHEET NUMBER	TOTAL SHEETS
7	KANSAS	87 N-0502-01	2009	115	226
A.R.R.A-N050(201)					



No.	Date	By	Approved	Revision

MAIZE ROAD
 WEST KELLOGG AVE. TO PAWNEE AVE.
 CITY OF WICHITA, KANSAS
 PHASE III - TRAFFIC CONTROL

POE & ASSOCIATES, INC.
 CONSULTING ENGINEERS
 5940 E. Central, Suite 200 • Wichita, KS 67208-0242
 Phone 316/685-4114 • FAX 316/685-4444



FINAL

Engineer: M. THOMPSON
 Designer: P. FERGUSON
 KDOT Job No.: 87 N-0502-01 Poe Job No.: 1935
 Date: SEPT 2009