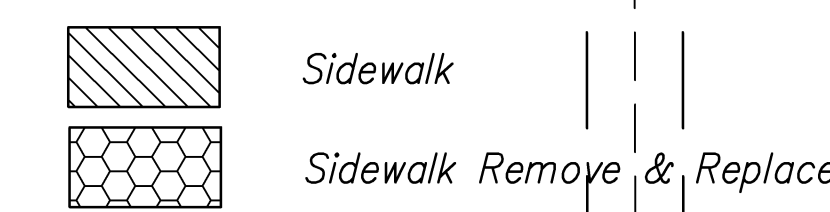
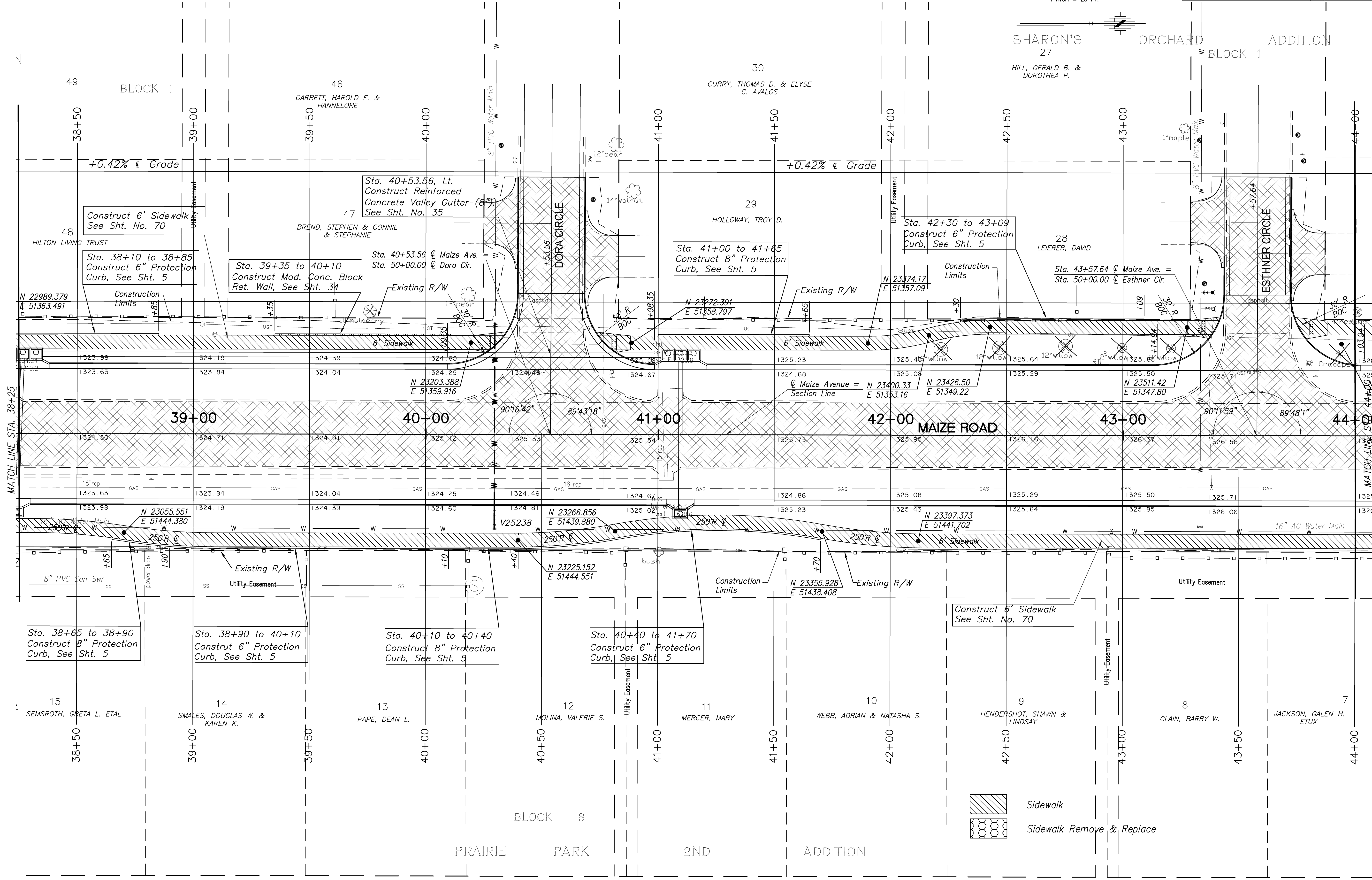


FHWA REG. NO.	STATE	PROJECT NO.:	YEAR	SHEET NUMBER	TOTAL SHEETS
7	KANSAS	87 N-0502-01	2009	12	226

A.R.R.A.-N050(201)

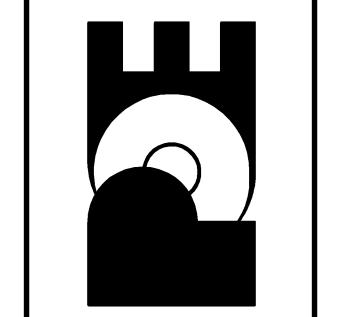
SHARON'S ORCHARD ADDITION
27
HILL, GERALD B. & DOROTHEA P.



No.	Date	By	Approved	Revision

MAIZE ROAD
WEST KELLOGG AVE. TO PANMEE AVE.
CITY OF WICHITA, KANSAS
PAVEMENT PLAN 38+25 TO 44+00

POE & ASSOCIATES, INC.
CONSULTING ENGINEERS
5940 E. Central, Suite 200 • Wichita, KS 67208-4242
Phone: 316.685-1114 • FAX: 316.685-4444



Engineer: P. FERGUSON
Designer: K. WARREN
KDOT Job No.: 87 N-0502-01 Poe Job No.: 1935
Date: SEPTEMBER 2009