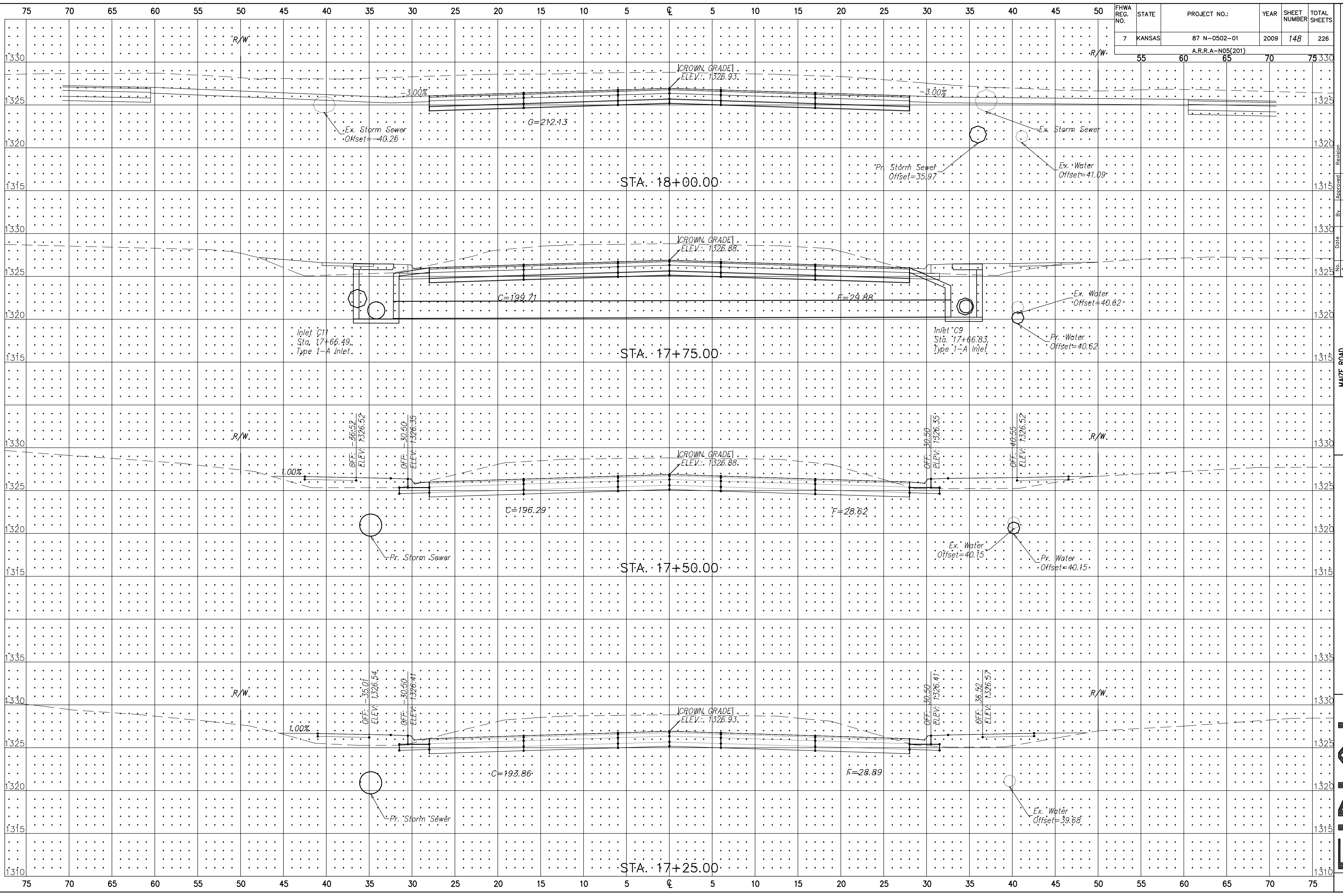


FHWA REG. NO.	STATE	PROJECT NO.:	YEAR	SHEET NUMBER	TOTAL SHEETS
7	KANSAS	87 N-0502-01	2009	148	226
A.R.R.A-N05(201)					



MAIZE ROAD	WEST KELLOGG AVE. TO PAWNEE AVE.	CITY OF WICHITA, KANSAS
POE & ASSOCIATES, INC. CONSULTING ENGINEERS 5940 E. Central, Suite 200 • Wichita, KS 67208-4242 Phone 316/685-4714 • FAX 316/685-4444		
Engineer:	P. FERGUSON	Sheet 148 of 226
Designer:	K. WARREN	
KDOT Job No.:	87 N-0502-01	Post Job No.:
Date:	AUG 2008	