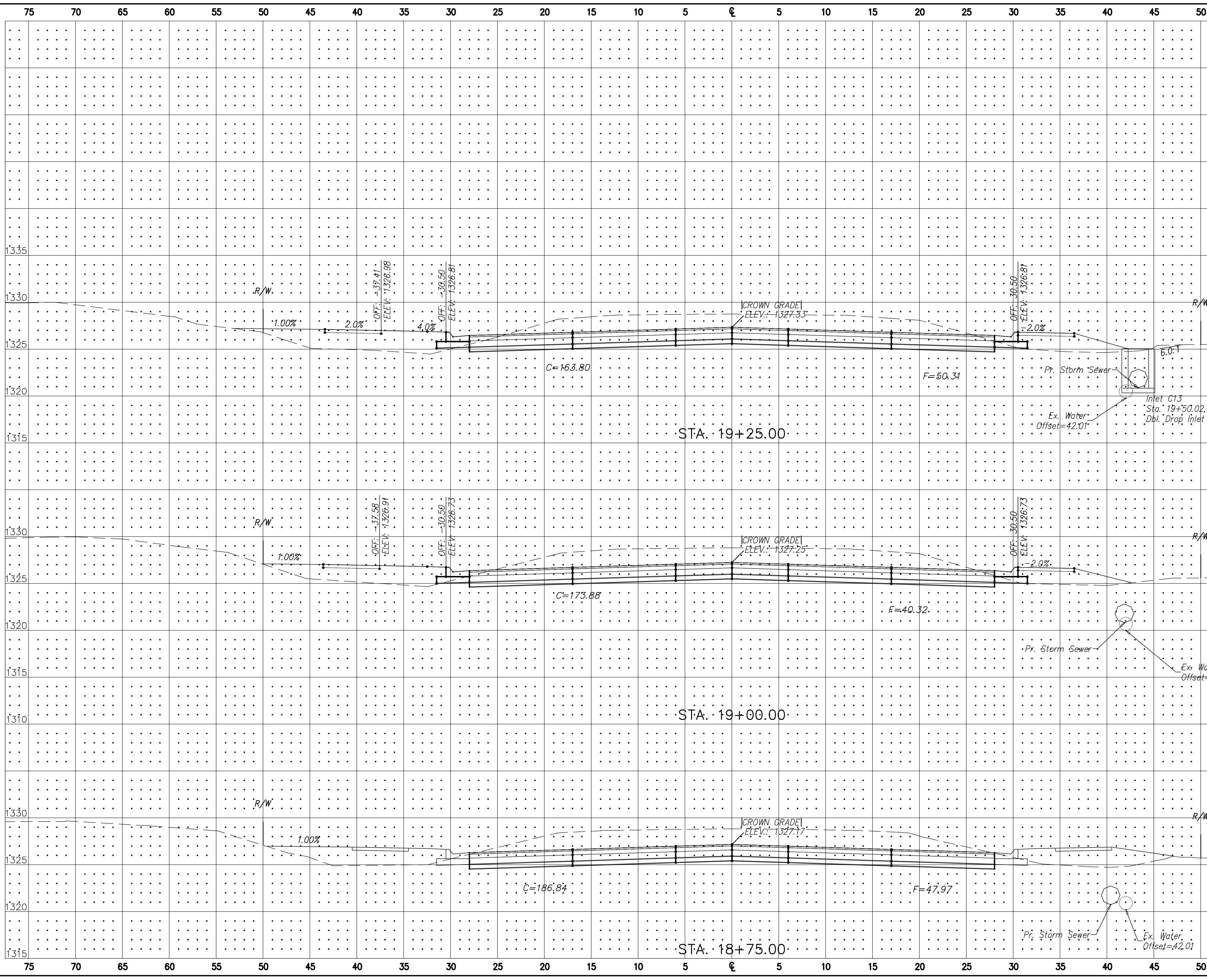


FHWA REG. NO.	STATE	PROJECT NO.:	YEAR	SHEET NUMBER	TOTAL SHEETS
7	KANSAS	87 N-0502-01	2009	150	226
A.R.R.A-N05(201)					



MAIZE ROAD
WEST KELLOGG AVE. TO PAWNEE AVE.
CITY OF WICHITA, KANSAS

POE & ASSOCIATES, INC.
CONSULTING ENGINEERS
 5940 E. Central, Suite 200 • Wichita, KS 67208-0242
 Phone 316/685-4114 • FAX 316/685-4444

ENGINEER
 P. FERGUSON
DESIGNER
 K. WARREN

KDOT Job No.: 87 N-0502-01 Proj. Job No.: 1935
 Date: AUG 2008

Sheet
 150
 of 226