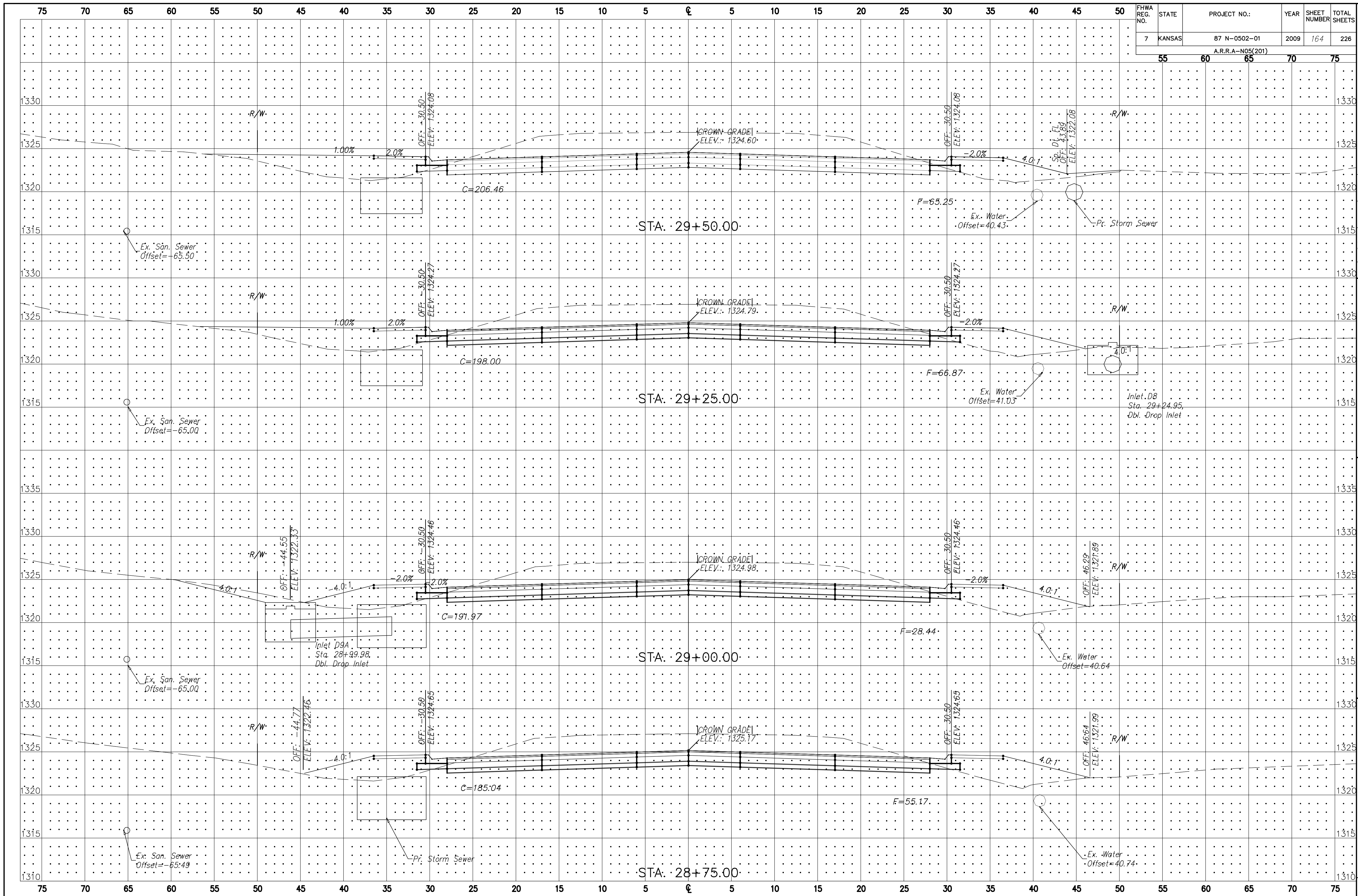


FHWA REG. NO.	STATE	PROJECT NO.:	YEAR	SHEET NUMBER	TOTAL SHEETS
7	KANSAS	87 N-0502-01	2009	164	226
A.R.R.A-N05(201)					



No.	Date	By	Approved	Revision	

MAIZE ROAD
WEST KELLOGG AVE. TO PAWNEE AVE.
CITY OF WICHITA, KANSAS

POE & ASSOCIATES, INC.
CONSULTING ENGINEERS
5940 E. Central, Suite 200 • Wichita, KS 67208-0242
 Phone 316/685-4714 • FAX 316/685-4444

Engineer: P. FERGUSON Designer: K. WARREN	KDOT Job No.: 87 N-0502-01 Poa Job No.: 1935 Date: AUG 2008
--	---

Sheet 164 of 226