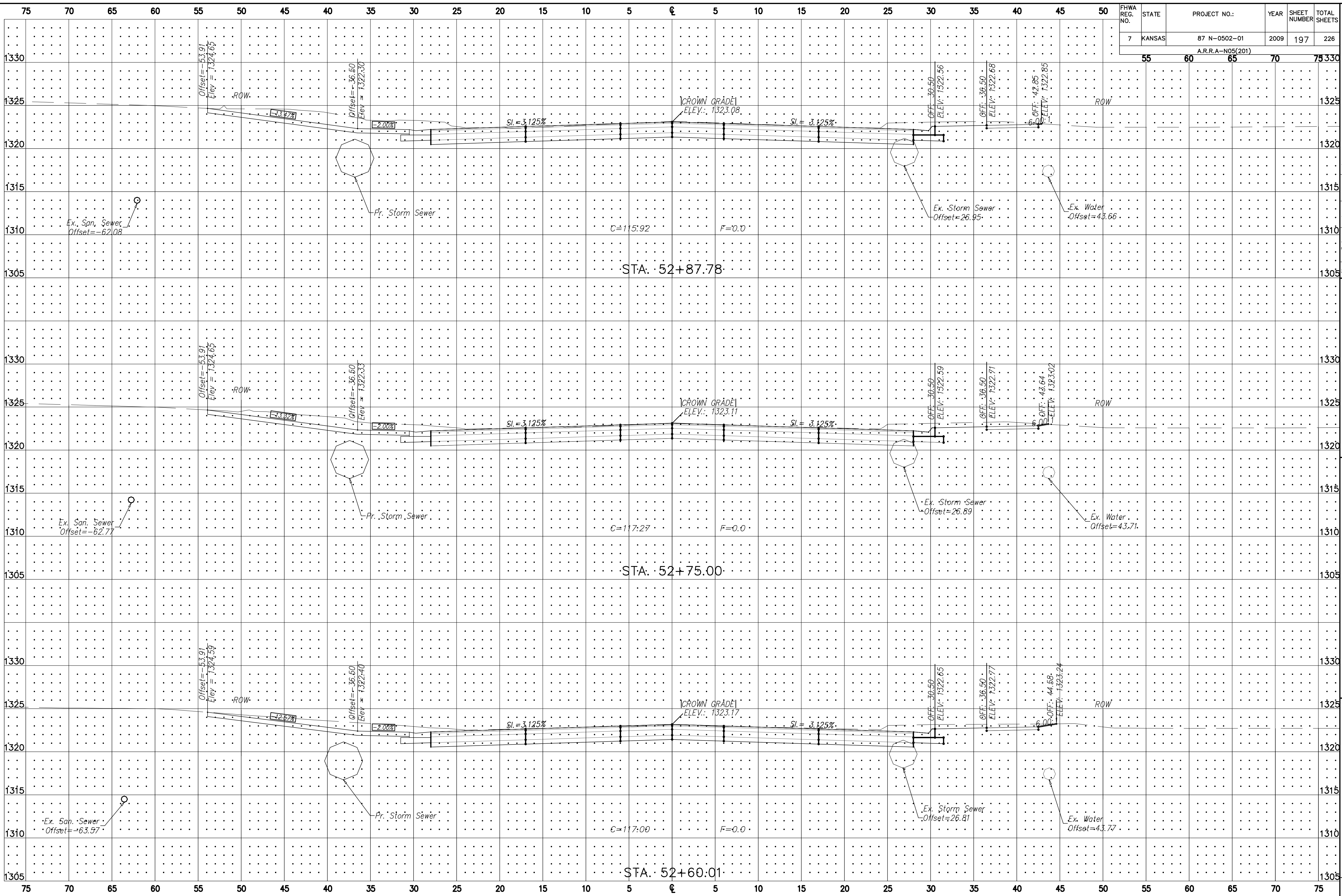


FHWA REG. NO.	STATE	PROJECT NO.:	YEAR	SHEET NUMBER	TOTAL SHEETS
7	KANSAS	87 N-0502-01	2009	197	226
A.R.R.A-N05(201)					



MAIZE ROAD	WEST KELLOGG AVE. TO PAWNEE AVE.	CITY OF WICHITA, KANSAS
<b>POE &amp; ASSOCIATES, INC.</b> CONSULTING ENGINEERS 5940 E. Central, Suite 200 • Wichita, KS 67208-4242 Phone: 316/685-4114 • FAX: 316/685-4444		
Engineer: P. FERGUSON Designer: K. WARREN KDOT Job No.: 87 N-0502-01    Poe Job No.: 1935 Date: AUG 2008		Sheet of 226