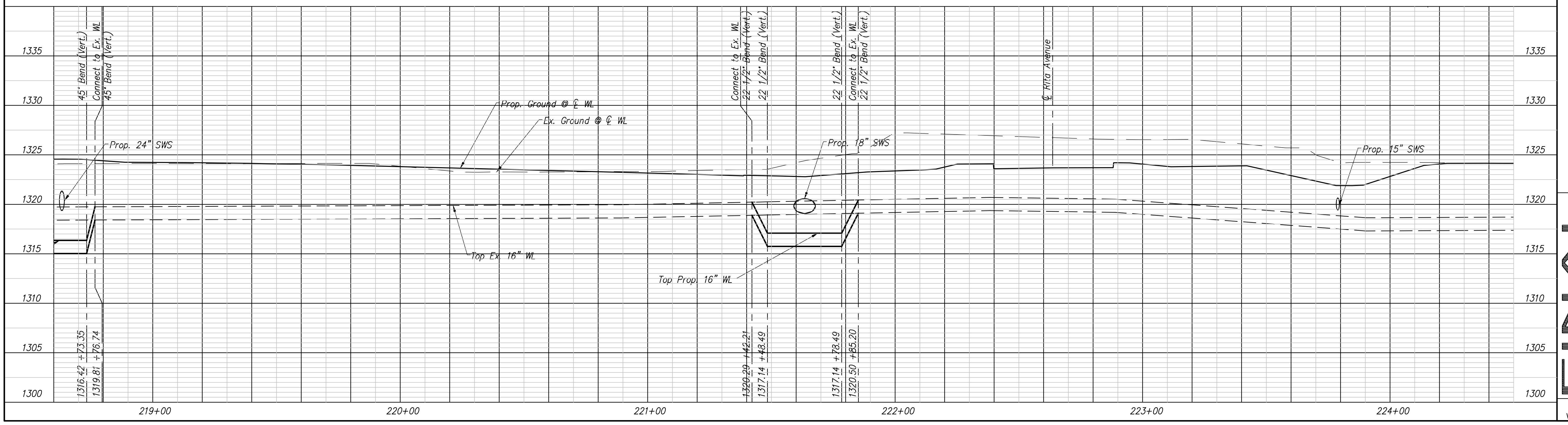
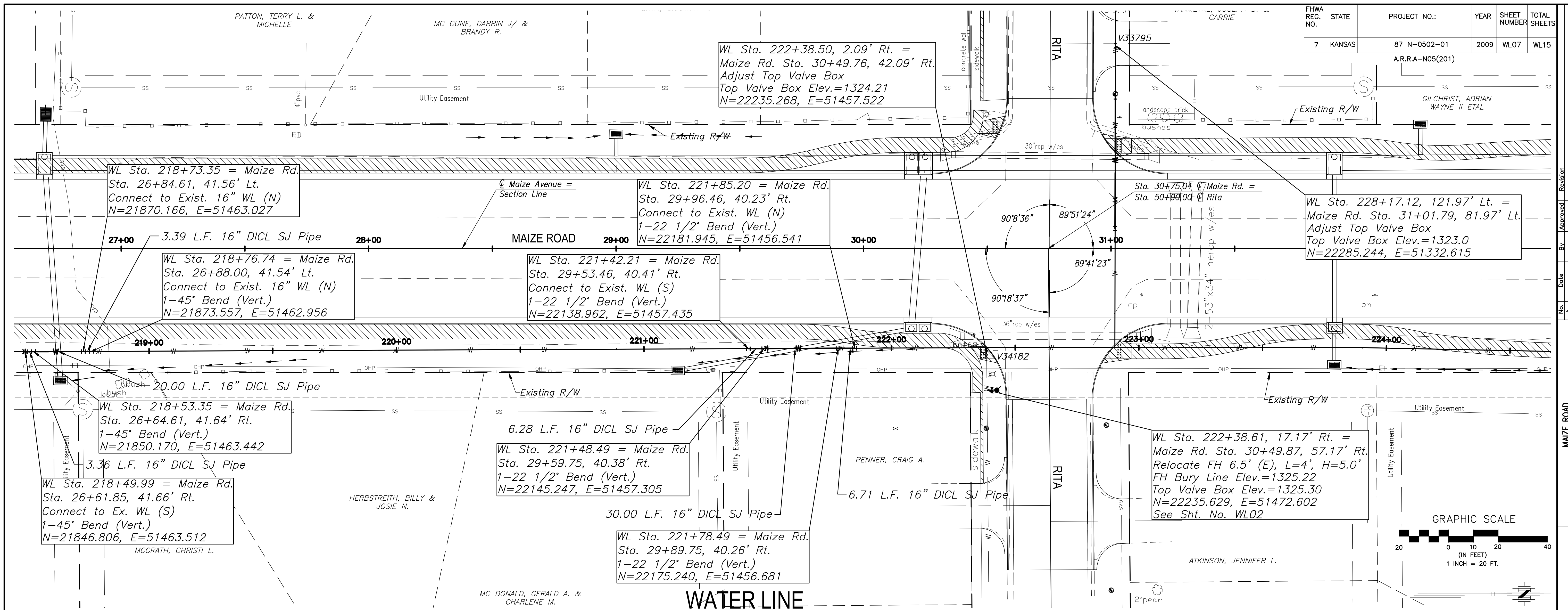


FHWA REG. NO.	STATE	PROJECT NO.:	YEAR	SHEET NUMBER	TOTAL SHEETS
7	KANSAS	87 N-0502-01	2009	WL07	WL15
A.R.R.A-N05(201)					



MAIZE ROAD	WEST KELLOGG AVE. TO PAWNEE AVE.	POE & ASSOCIATES, INC.
	CITY OF WICHITA, KANSAS	CONSULTING ENGINEERS
	WATER LINE P & P 218+60 TO 224+40	5940 E. Central, Suite 200 • Wichita, KS 67208-0242
		Phone 316/685-4114 • FAX 316/685-4444

Engineer:	P. FERGUSON
Designer:	K. WARREN
KDOT Job No.:	87 N-0502-01
Date:	SEPTEMBER 2009

Sheet  
WL07 of WL15