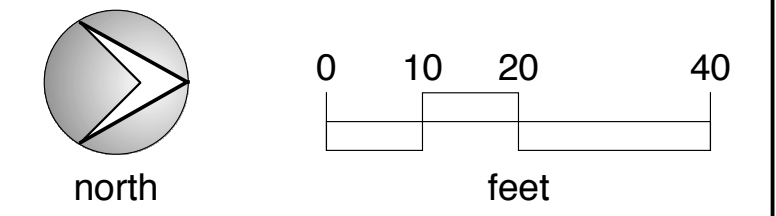


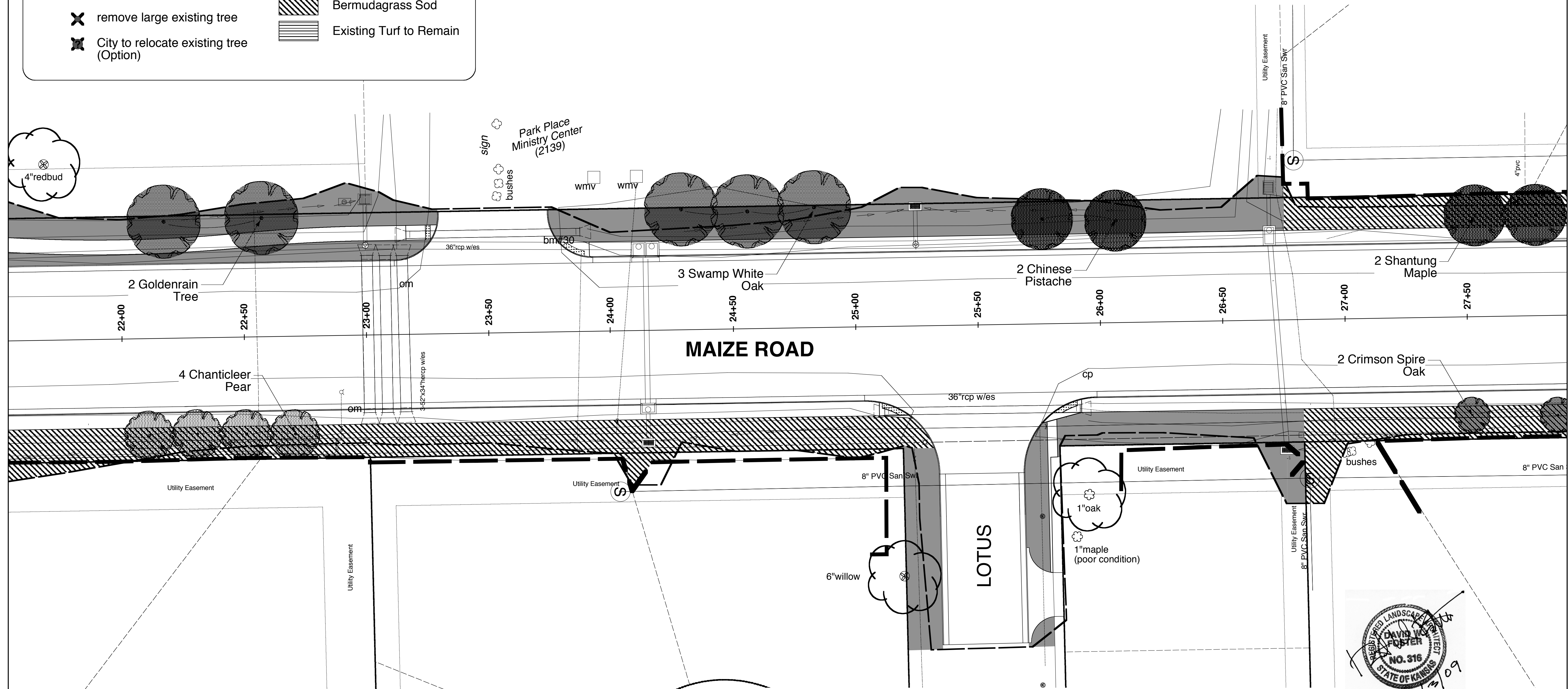
FHWA Reg. No.	State	Project Number	Year	Sheet Number	Total Sheets
7	Kansas	87 N-0502-01	2009	LS 5	11
A.R.R.A. - N05(201)					

Maize Road Streetscape / Pawnee to Kellogg
Landscape Plan — SP 21+54 to SP 27+91



KEY

- approximate mature crown diameter of existing deciduous tree
- approximate mature crown diameter of existing coniferous tree
- remove small existing tree
- remove large existing tree
- City to relocate existing tree (Option)
- right-of-way
- construction limits
- Sidewalk
- Fescue Sod
- Bermudagrass Sod
- Existing Turf to Remain



Plotted: November 3, 2009
Project: 09020

POE & ASSOCIATES OF KANSAS, INC.
CONSULTING ENGINEERS
5940 E. Central, Suite 200 ■ Wichita, KS 67208-4242
Phone 316/685-4114 ■ FAX 316/685-4444

LANDSCAPE ARCHITECTS PLANNERS
rice-foster associates
1415 East 2nd Street
Wichita, KS 67214
phone 316-262-4525
fax 316-262-7316