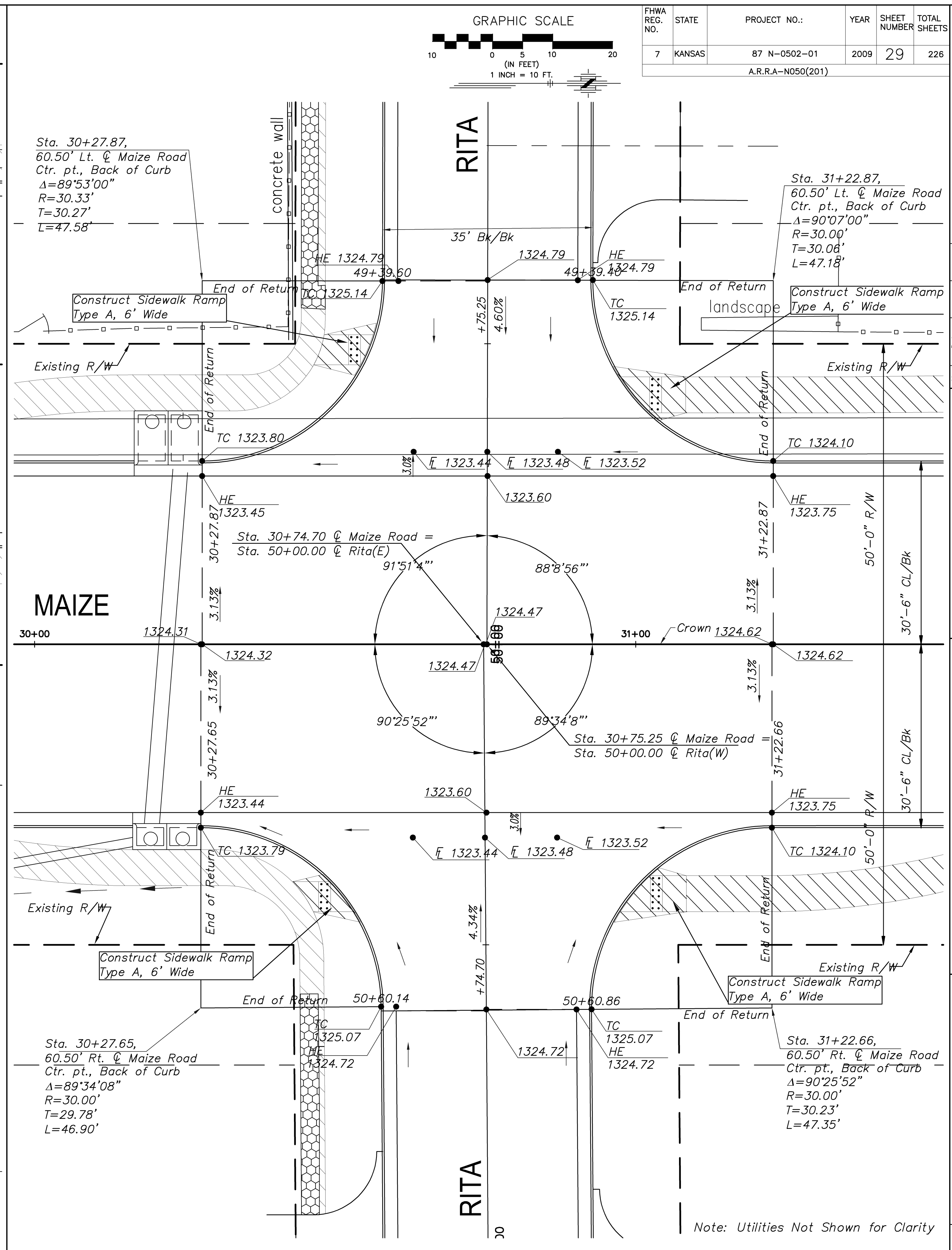
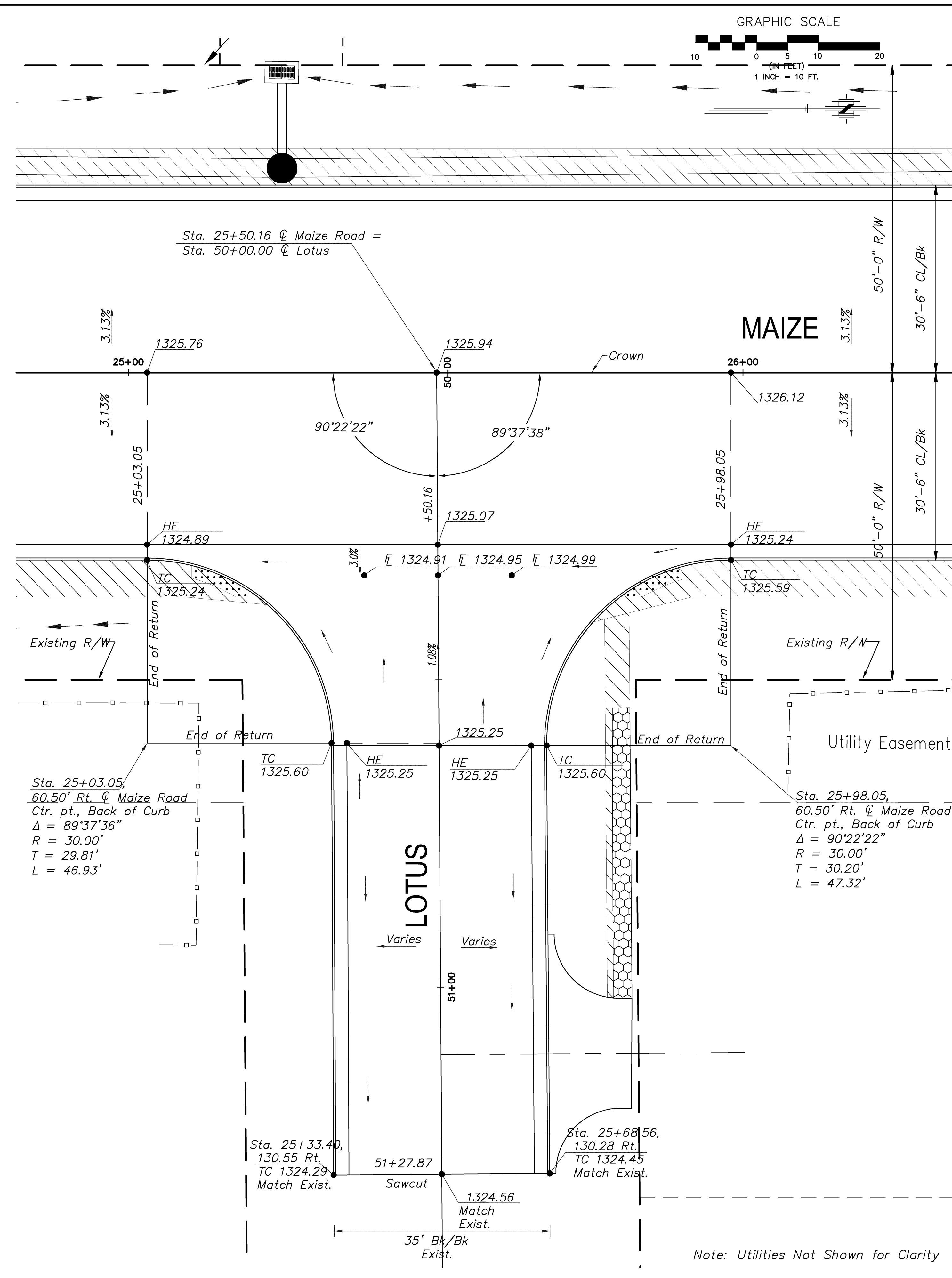
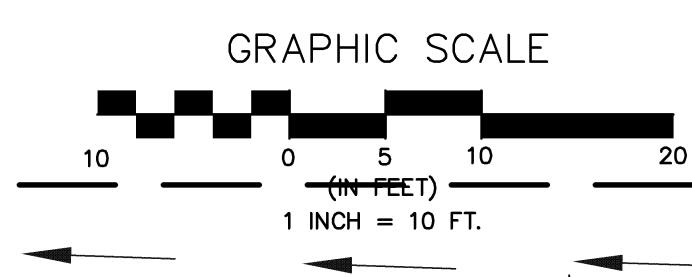
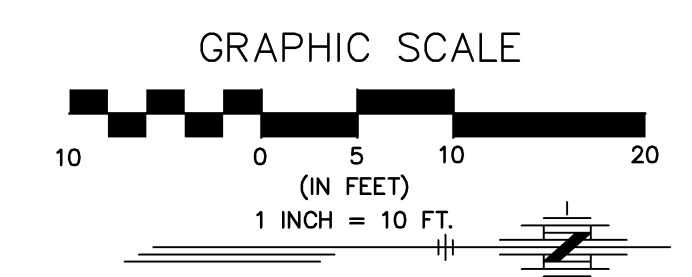


FHWA REG. NO.	STATE	PROJECT NO.:	YEAR	SHEET NUMBER	TOTAL SHEETS
7	KANSAS	87 N-0502-01	2009	29	226
A.R.R.A.-N050(201)					



Note: Utilities Not Shown for Clarity

Note: Utilities Not Shown for Clarity

MAIZE ROAD	WEST KELLOGG AVE. TO PAWNEE AVE.
CITY OF WICHITA, KANSAS	LOTUS 25+50.16
	RYTA 30+75.04

POE & ASSOCIATES, INC.	CONSULTING ENGINEERS
5940 E. Central, Suite 200 • Wichita, KS 67208-9242	
Phone 316/685-4114 • FAX 316/685-4444	

Engineer:	P. FERGUSON
Designer:	K. WARREN
KDOT Job No.:	87 N-0502-01
Sheet	29
Date:	SEPTEMBER 2009
Poe Job No.:	1935
of	226