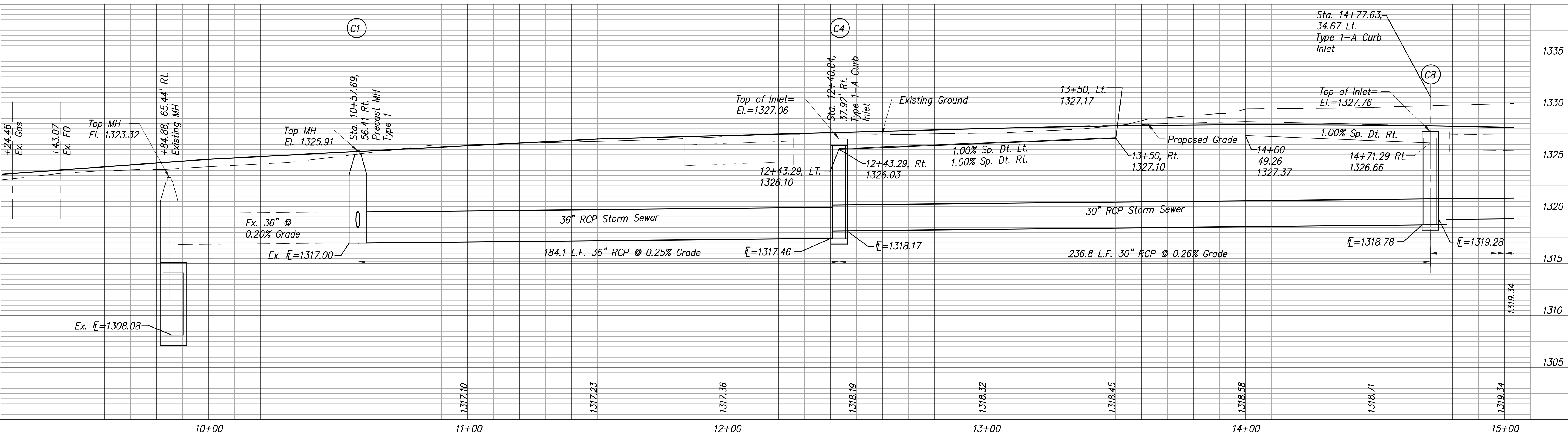
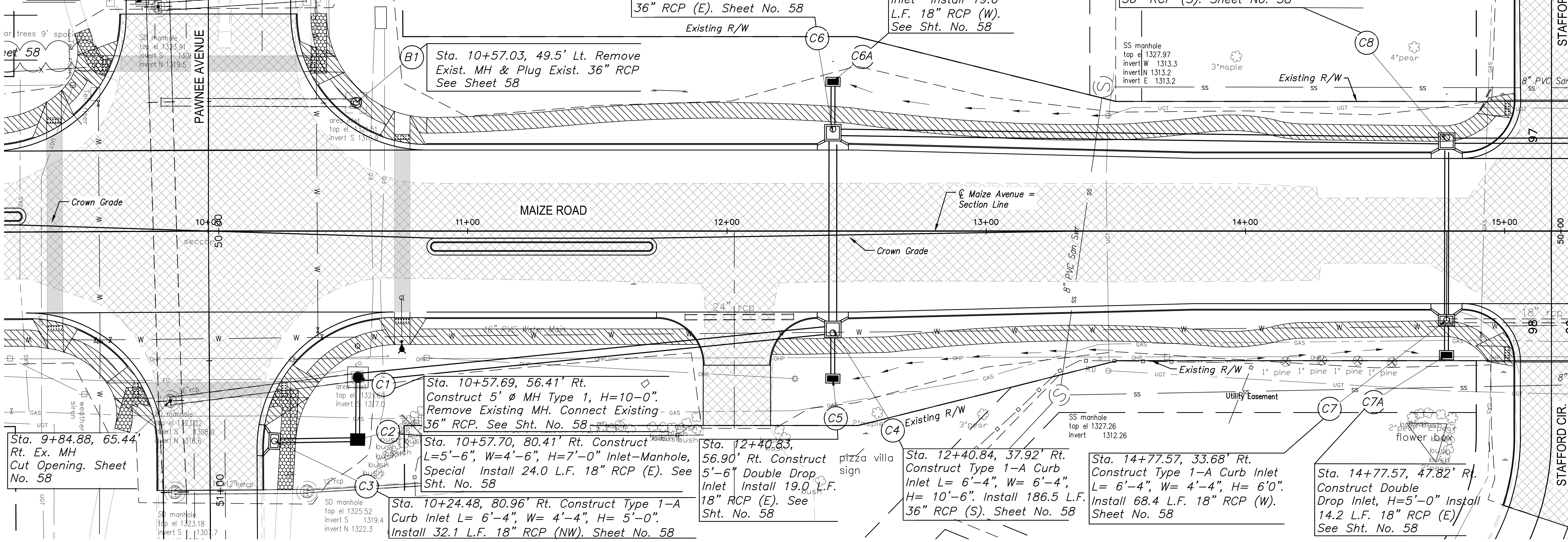


FHWA REG. NO.	STATE	PROJECT NO.:	YEAR	SHEET NUMBER	TOTAL SHEETS
7	KANSAS	87 N-0502-01	2009	46	226
A.R.R.A-N05(201)					



Sta. 12+40.86, 37.92' Lt.
Construct Type 1-A Curb
Inlet L= 6'-4", W= 6'-4",
H= 9'-0". Install 75.8 L.F.
36" RCP (E). Sheet No. 58

Sta. 12+40.92,
57.54' Lt. Construct
5'-6" Double Drop
Inlet Install 19.6
L.F. 18" RCP (W).
See Sht. No. 58

Sta. 14+77.60, 34.67' Lt.
Construct Type 1-A Curb
Inlet L= 6'-4", W= 6'-4",
H= 10'-0". Install 236.8 L.F.
30" RCP (S). Sheet No. 58

B1 Sta. 10+57.03, 49.5' Lt. Remove
Exist. MH & Plug Exist. 36" RCP
See Sheet 58

C1 Sta. 10+57.69, 56.41' Rt.
Construct 5' Ø MH Type 1, H=10'-0".
Remove Existing MH. Connect Existing
36" RCP. See Sht. No. 58

C2 Sta. 10+57.70, 80.41' Rt. Construct
L=5'-6", W=4'-6", H=7'-0" Inlet-Manhole,
Special Install 24.0 L.F. 18" RCP (E). See
Sht. No. 58

C3 Sta. 10+24.48, 80.96' Rt. Construct Type 1-A
Curb Inlet L= 6'-4", W= 4'-4", H= 5'-0".
Install 32.1 L.F. 18" RCP (NW). Sheet No. 58

C4 Sta. 12+40.84, 37.92' Rt.
Construct Type 1-A Curb
Inlet L= 6'-4", W= 6'-4",
H= 10'-6". Install 186.5 L.F.
36" RCP (S). Sheet No. 58

C5 Sta. 14+77.57, 33.68' Rt.
Construct Type 1-A Curb
Inlet L= 6'-4", W= 4'-4", H= 6'-0".
Install 68.4 L.F. 18" RCP (W).
Sheet No. 58

C6 Sta. 14+77.57, 47.82' Rt.
Construct Double
Drop Inlet, H=5'-0" Install
14.2 L.F. 18" RCP (E)
See Sht. No. 58

MAIZE ROAD
STAFFORD AVENUE TO PAWNEE AVE.
CITY OF WICHITA, KANSAS
STORM SEWER P & P 9+20 to 15+00

POE & ASSOCIATES, INC.
CONSULTING ENGINEERS
5940 E. Central, Suite 200 • Wichita, KS 67208-4242
Phone 316/665-4714 • FAX 316/665-4444

ENGINEER: P. FERGLISON
DESIGNER: K. WARREN
KDOT Job No.: 87 N-0502-01 Poe Job No.: 1935
DATE: SEPTEMBER 2009

46 of 226