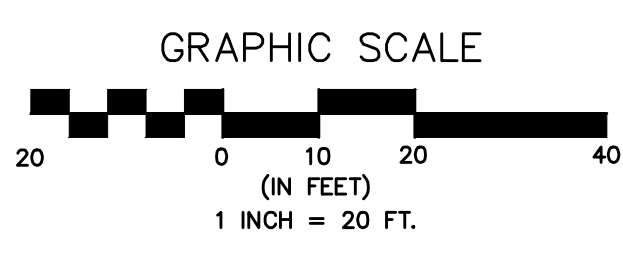
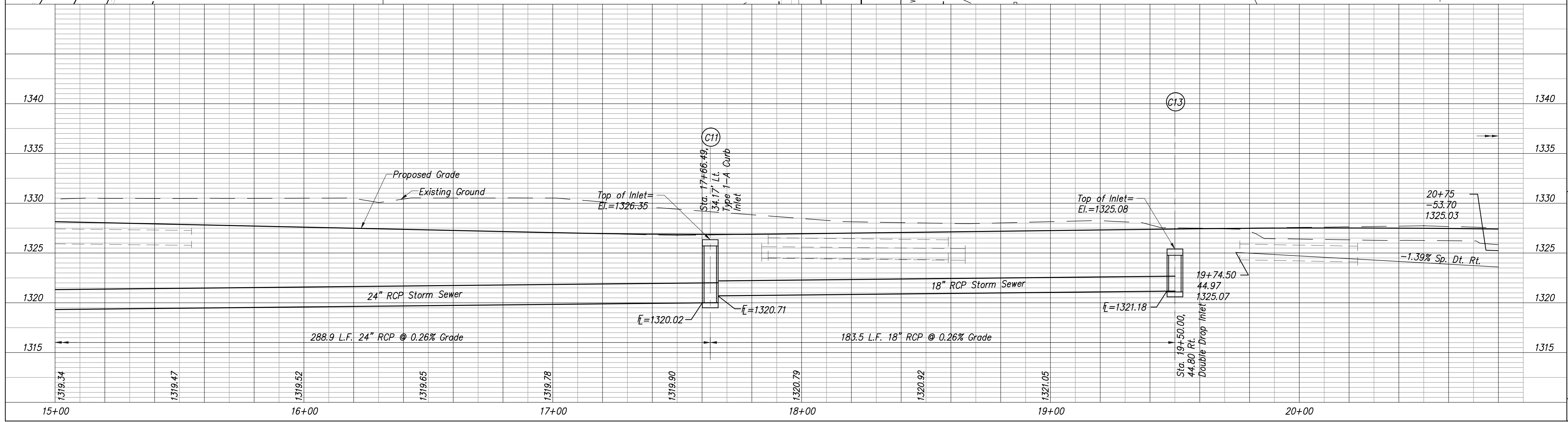
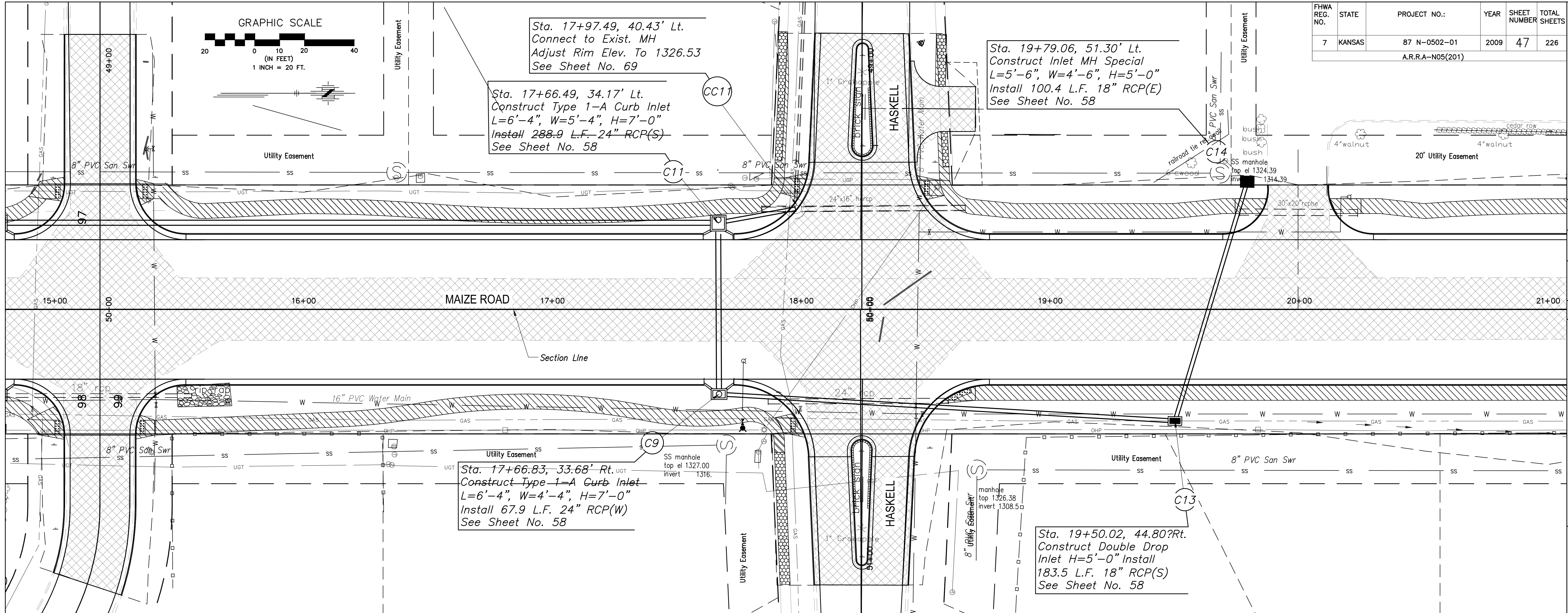


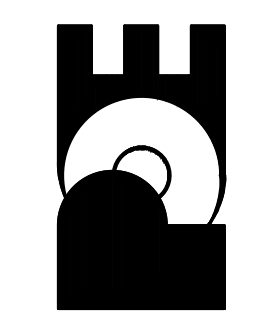
FHWA REG. NO.	STATE	PROJECT NO.:	YEAR	SHEET NUMBER	TOTAL SHEETS
7	KANSAS	87 N-0502-01	2009	47	226
A.R.R.A-N05(201)					



No.	Date	By	Approved	Revision

MAIZE ROAD
 WEST KELLOGG AVE. TO PAWNEE AVE.
 CITY OF WICHITA, KANSAS
 STORM SEWER P & P 15+00 to 20+80

POE & ASSOCIATES, INC.
 CONSULTING ENGINEERS
 5940 E. Central, Suite 200 • Wichita, KS 67208-4242
 Phone 316/665-4114 • FAX 316/665-4444



FINAL
 Engineer: P. FERGUSON
 Designer: K. WARREN
 KDOT Job No.: 87 N-0502-01
 Date: SEPTEMBER 2009
 POC Job No.: 1935