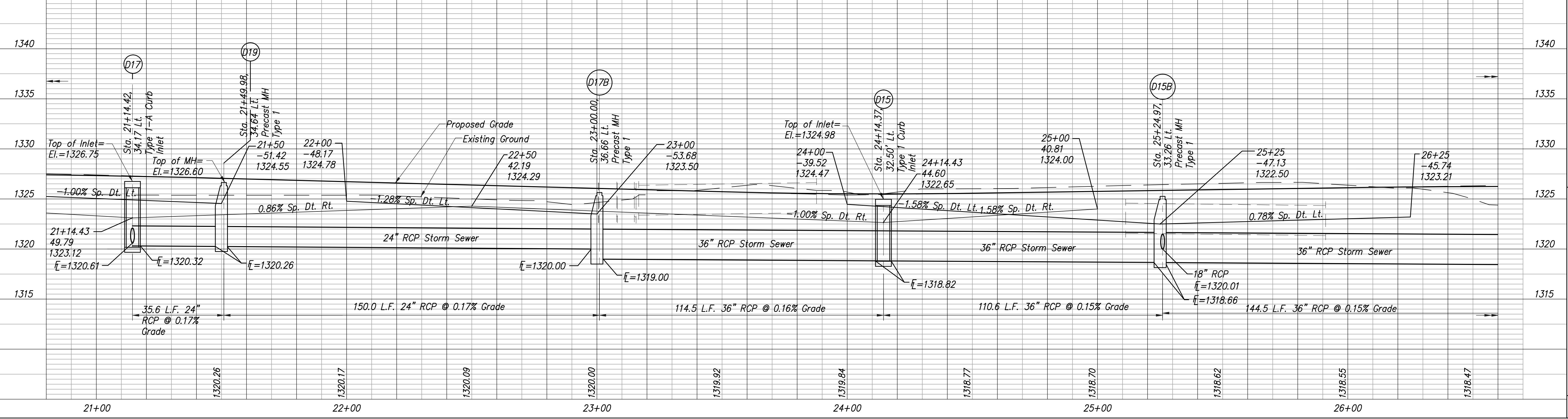
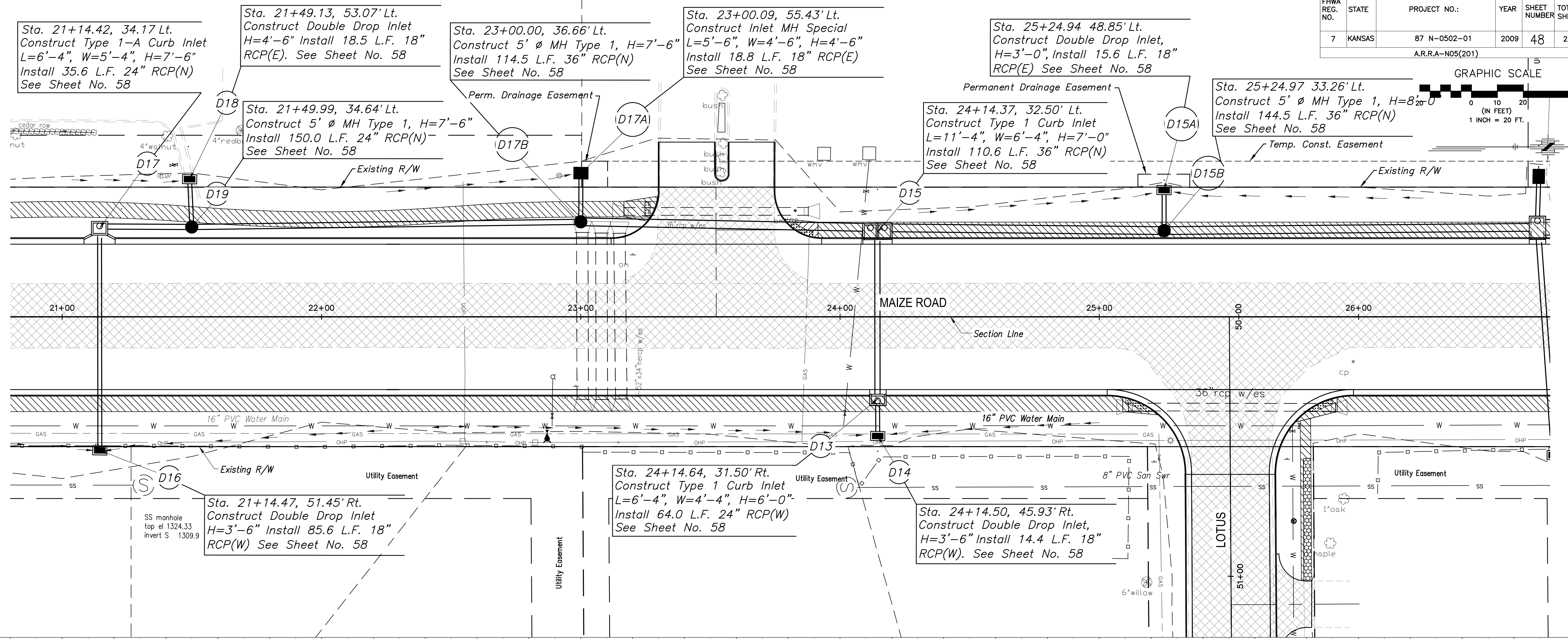
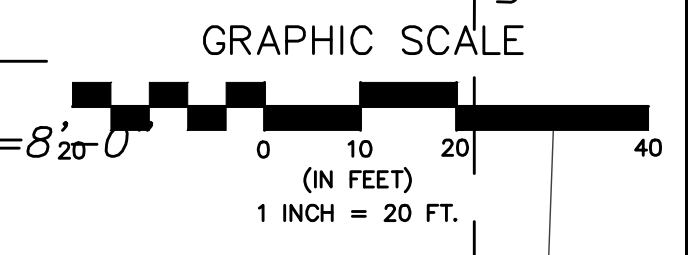


FHWA REG. NO.	STATE	PROJECT NO.:	YEAR	SHEET NUMBER	TOTAL SHEETS
7	KANSAS	87 N-0502-01	2009	48	226



MAIZE ROAD	WEST KELLOGG AVE. TO PAWNEE AVE.	POE & ASSOCIATES, INC. CONSULTING ENGINEERS 5940 E. Central, Suite 200 • Wichita, KS 67208-4242 Phone: 316/665-4114 • FAX: 316/665-4444
CITY OF WICHITA, KANSAS	STORM SEWER P & P 20+80 to 26+60	

Engineer: P. FERGIJON Designer: K. WARREN KDOT Job No.: 87 N-0502-01 Date: SEPTEMBER 2009	Sheet of 226
--	-----------------