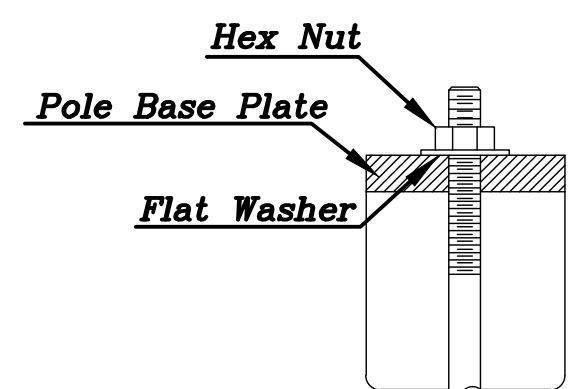


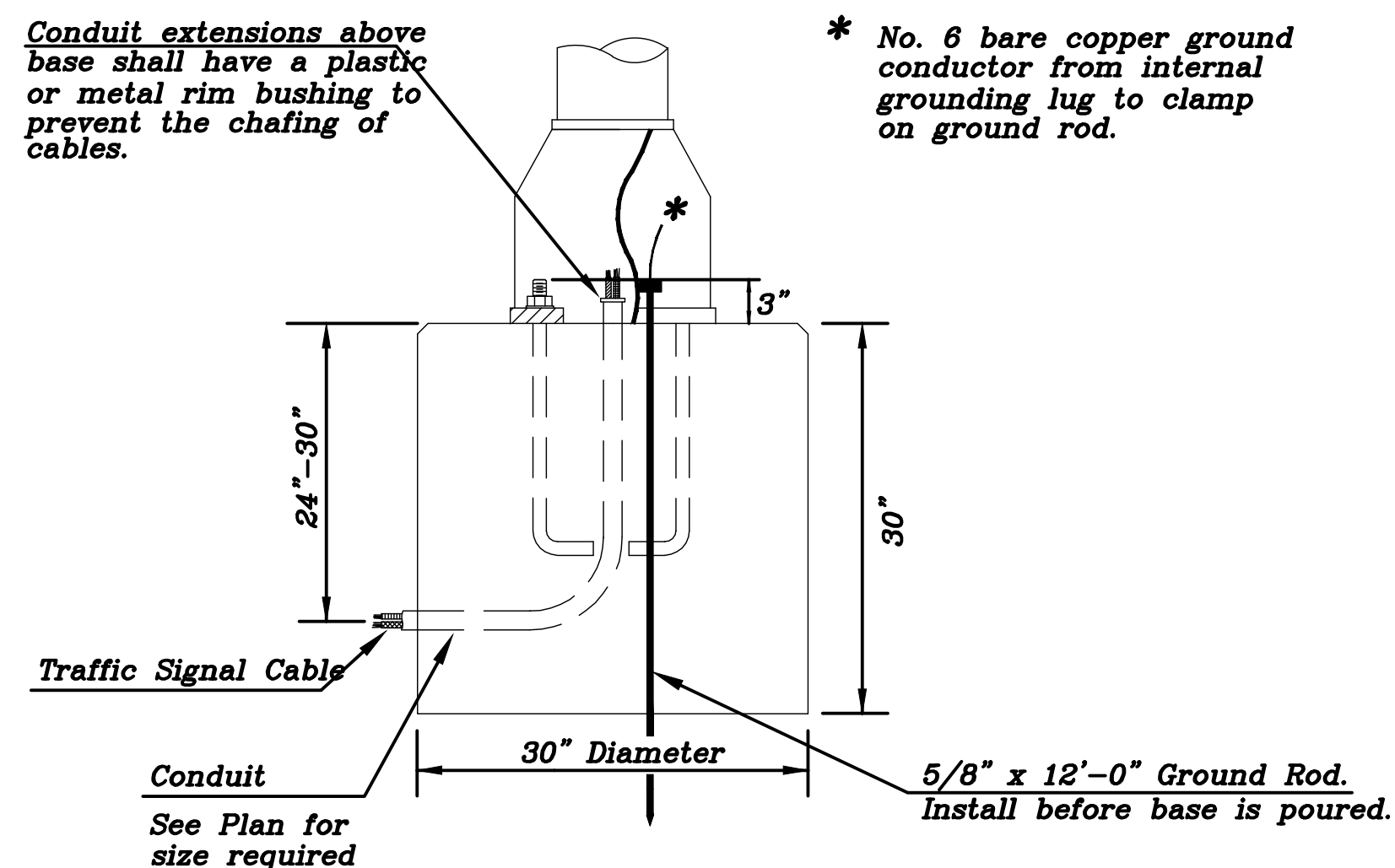
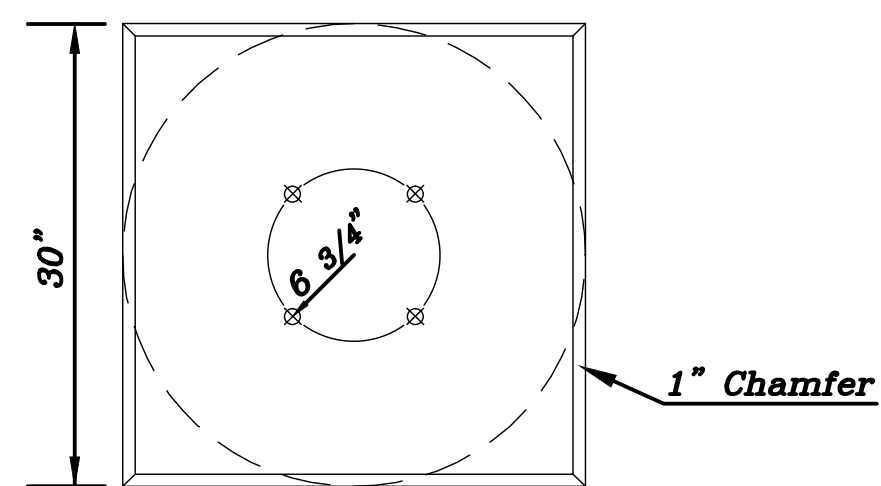
FHWA REG. NO.	STATE	PROJECT NO.	YEAR	SHEET NUMBER	TOTAL SHEETS
7	KANSAS	87 N-0502-01	2009	93	231
ARRA-N050K201					

DATE	BY	REFERENCES NOTED	REFERENCES CHECKED

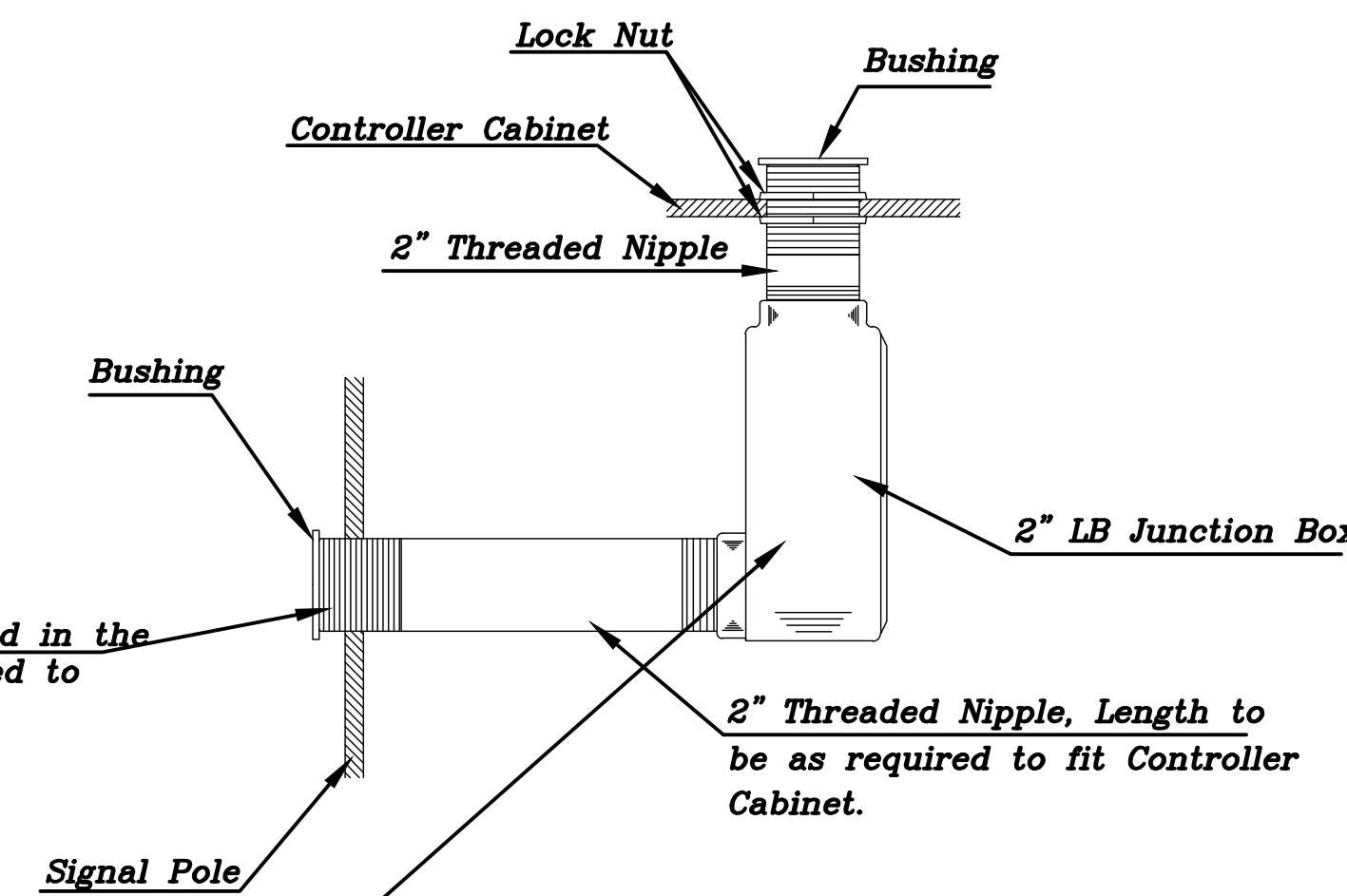
Use Keystone "No-Weld Number 1 Anti-Seize Compound" on all bolts & nuts.



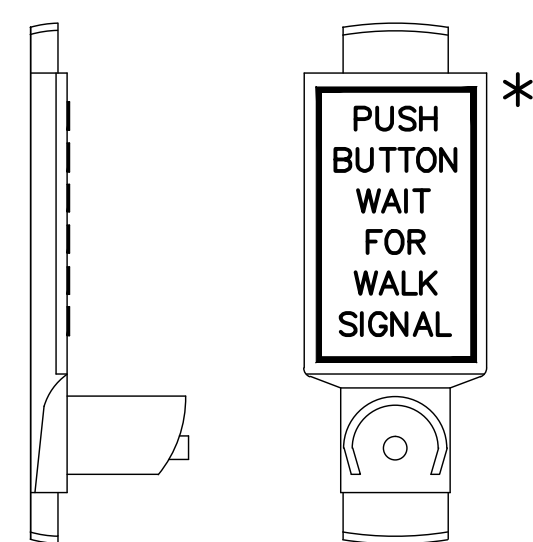
**ANCHOR BOLT
DETAIL**



CONCRETE BASE DETAIL

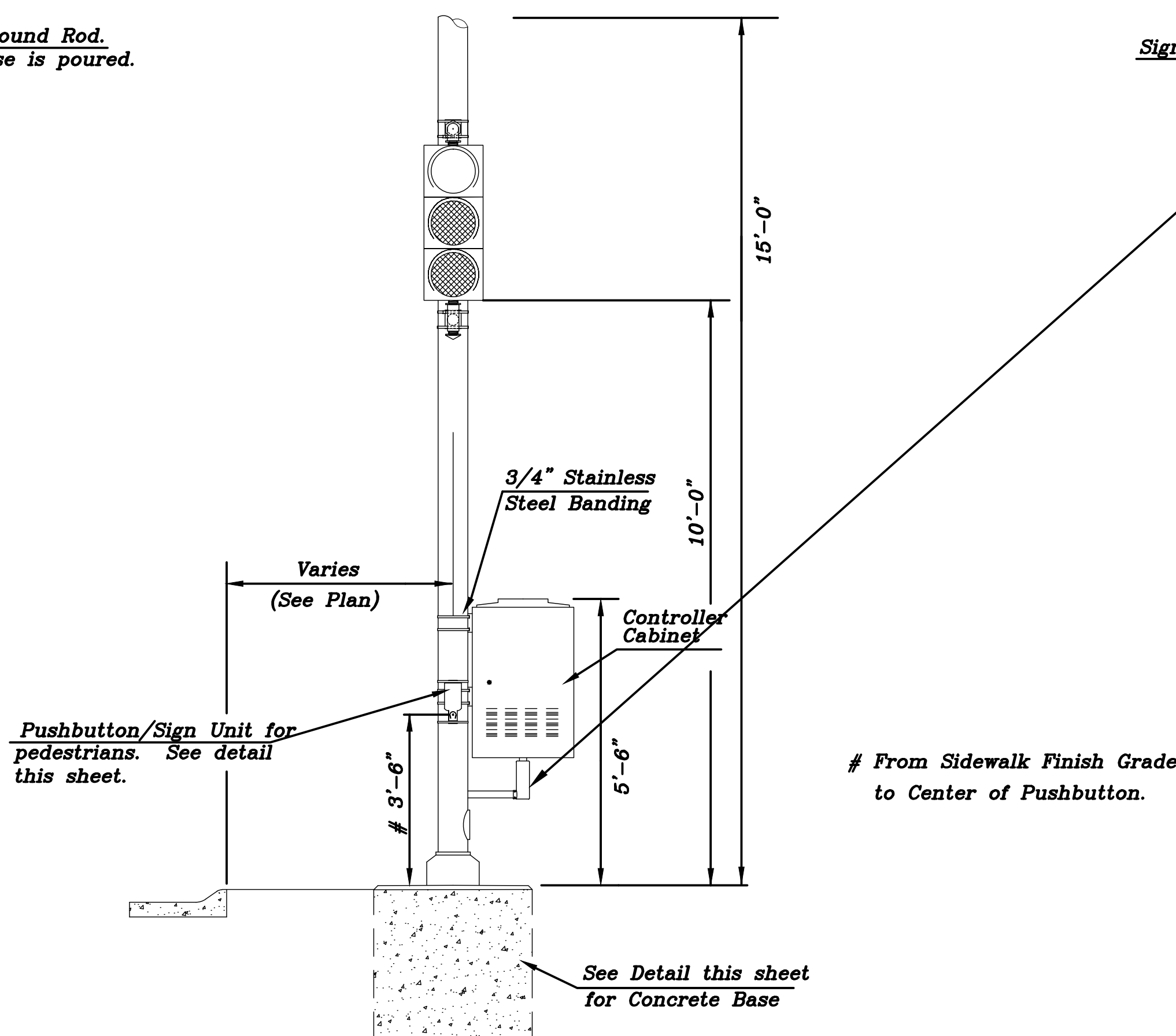


* NOTE: MESSAGE TO BE CAST WITH HOUSING (ONE PIECE)



INSTALL PEDESTRIAN PUSHBUTTON UNDERNEATH CORRESPONDING PEDESTRIAN SIGNAL HEAD ON SIDE OF POLE NEAREST CROSSWALK. UNIT SHALL BE FIRMLY ATTACHED TO THE SIDE OF POLE WITH 3/4" STEEL BANDS. SHARP ENDS SHALL BE FOLDED UNDER TO PREVENT INJURY TO PEDESTRIANS.

**PEDESTRIAN PUSHBUTTON/SIGN
UNIT DETAIL**



TRAFFIC SIGNAL PEDESTAL

PROJECT DESCRIPTION	
TRAFFIC SIGNAL PEDESTAL & CONCRETE BASE DETAIL SHEET	
PROJECT NUMBER	
DRAWN BY: T.M.	SCALE: NO SCALE
DATE: MAY 07	REVISOR: L.R.B.
	DATE: MAY 2004
CITY OF WICHITA DEPARTMENT OF PUBLIC WORKS	
ENGINEERING DIVISION	
PAUL GUNZELMAN, TRAFFIC ENGINEER	SHEET OF

MAIZE ROAD
 WEST KELLOGG AVE. TO PAWNEE AVE.
 CITY OF WICHITA, KANSAS
 TRAFFIC SIGNAL DETAILS

POE & ASSOCIATES, INC.
 CONSULTING ENGINEERS
 5940 E. Central, Suite 200 Wichita, KS 67208-1432
 Phone: 316-665-4114 FAX: 316-665-4444

FINAL
 Engineer: P. FERGUSON
 Designer: P. FERGUSON
 P.O. Job No.: 1935
 Date: AUGUST, 2009

Sheet
 93 of 226