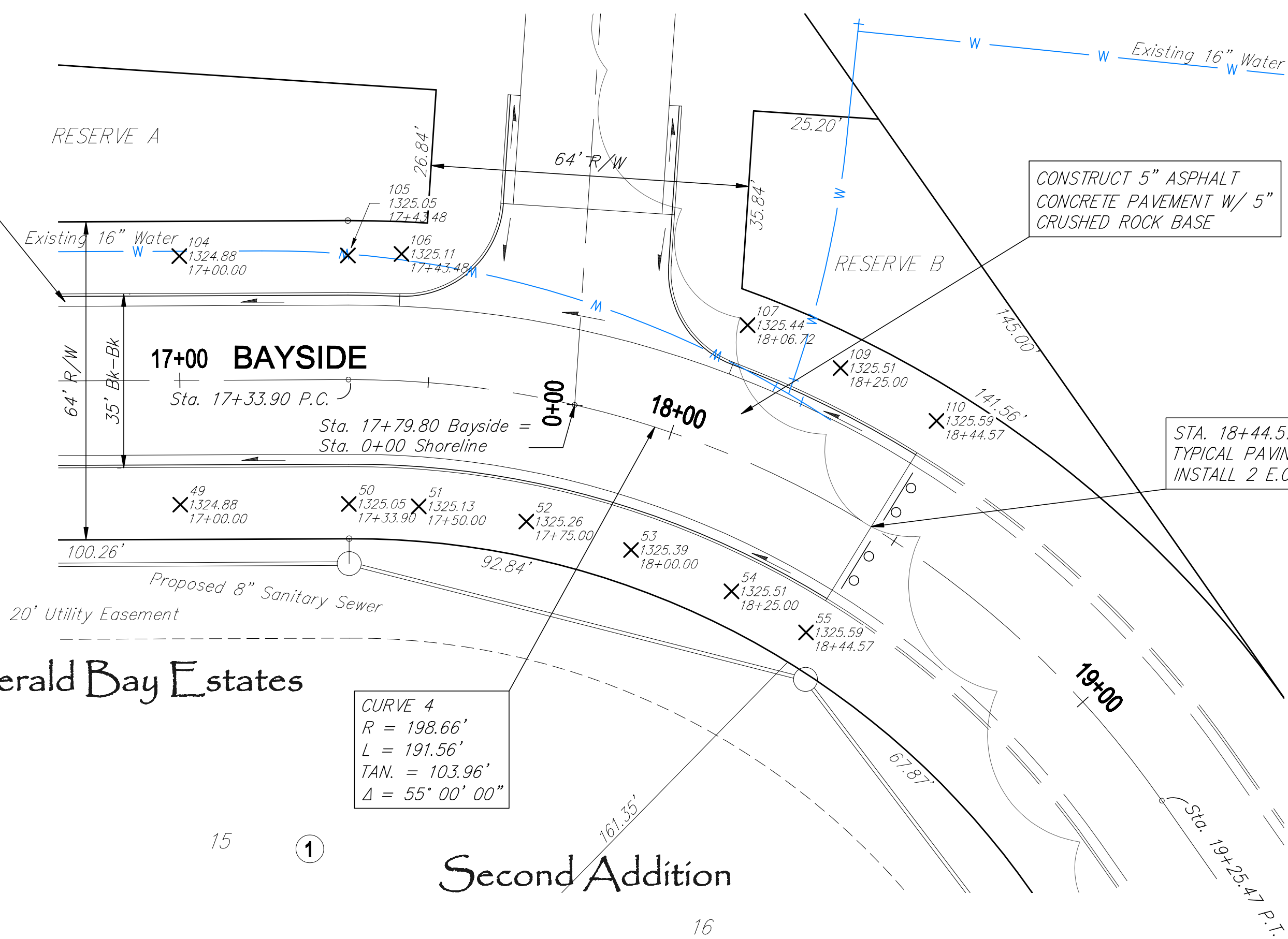


CONSTRUCT COMBINED ROLL TYPE CURB AND GUTTER (3 5/8") BOTH SIDES



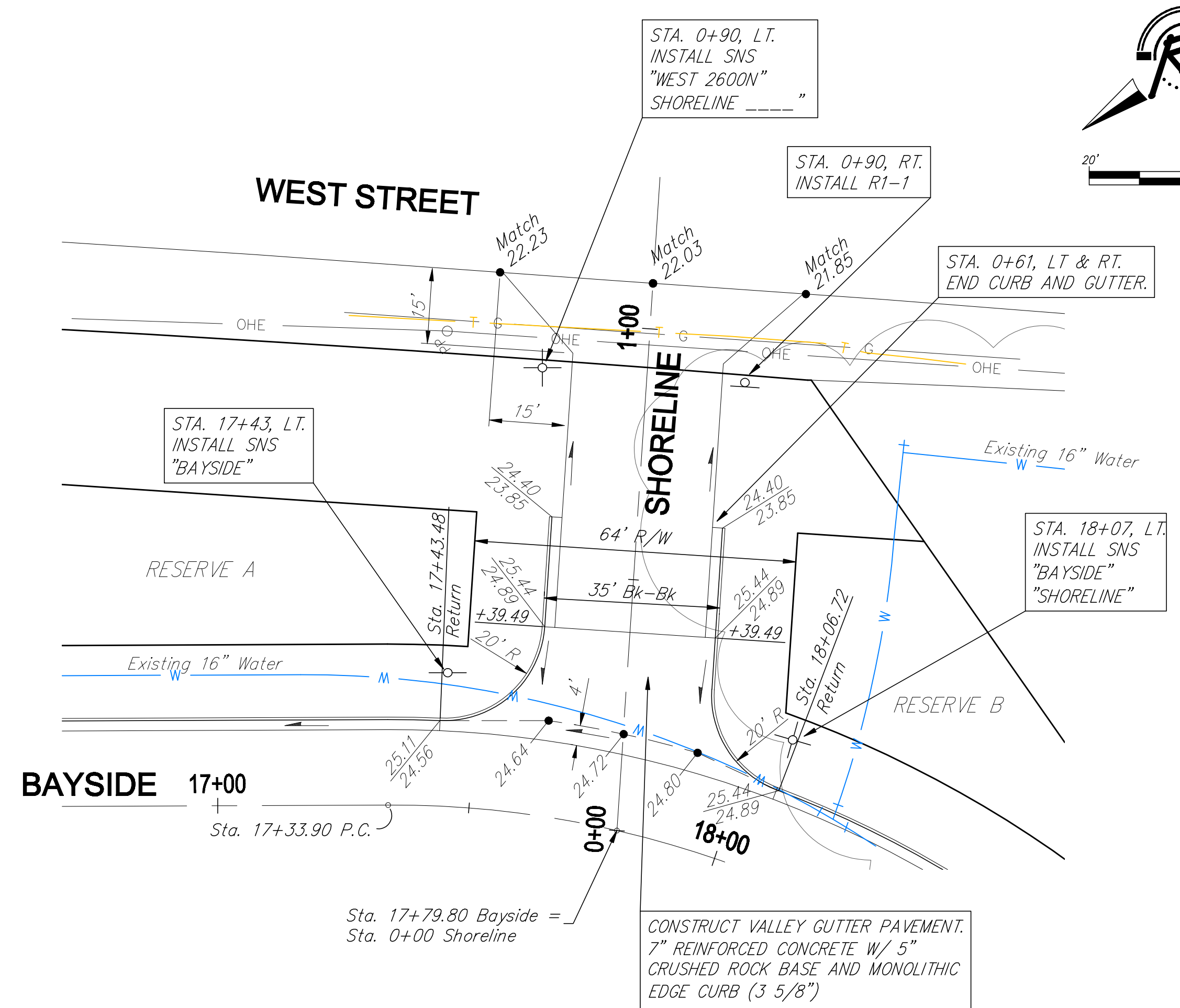
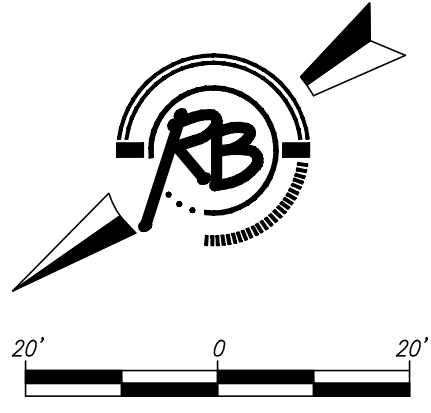
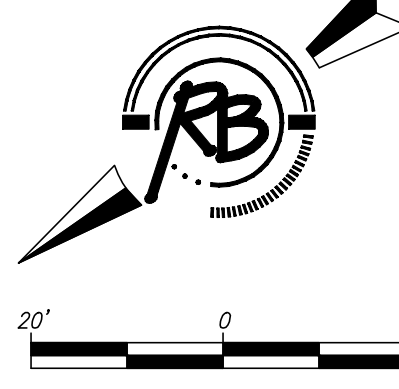
CONSTRUCT 5" ASPHALT CONCRETE PAVEMENT W/ 5" CRUSHED ROCK BASE

STA. 18+44.57 END TYPICAL PAVING SECTION. INSTALL 2 E.O.R. MARKERS

CURVE 4
 R = 198.66'
 L = 191.56'
 TAN. = 103.96'
 Δ = 55° 00' 00"

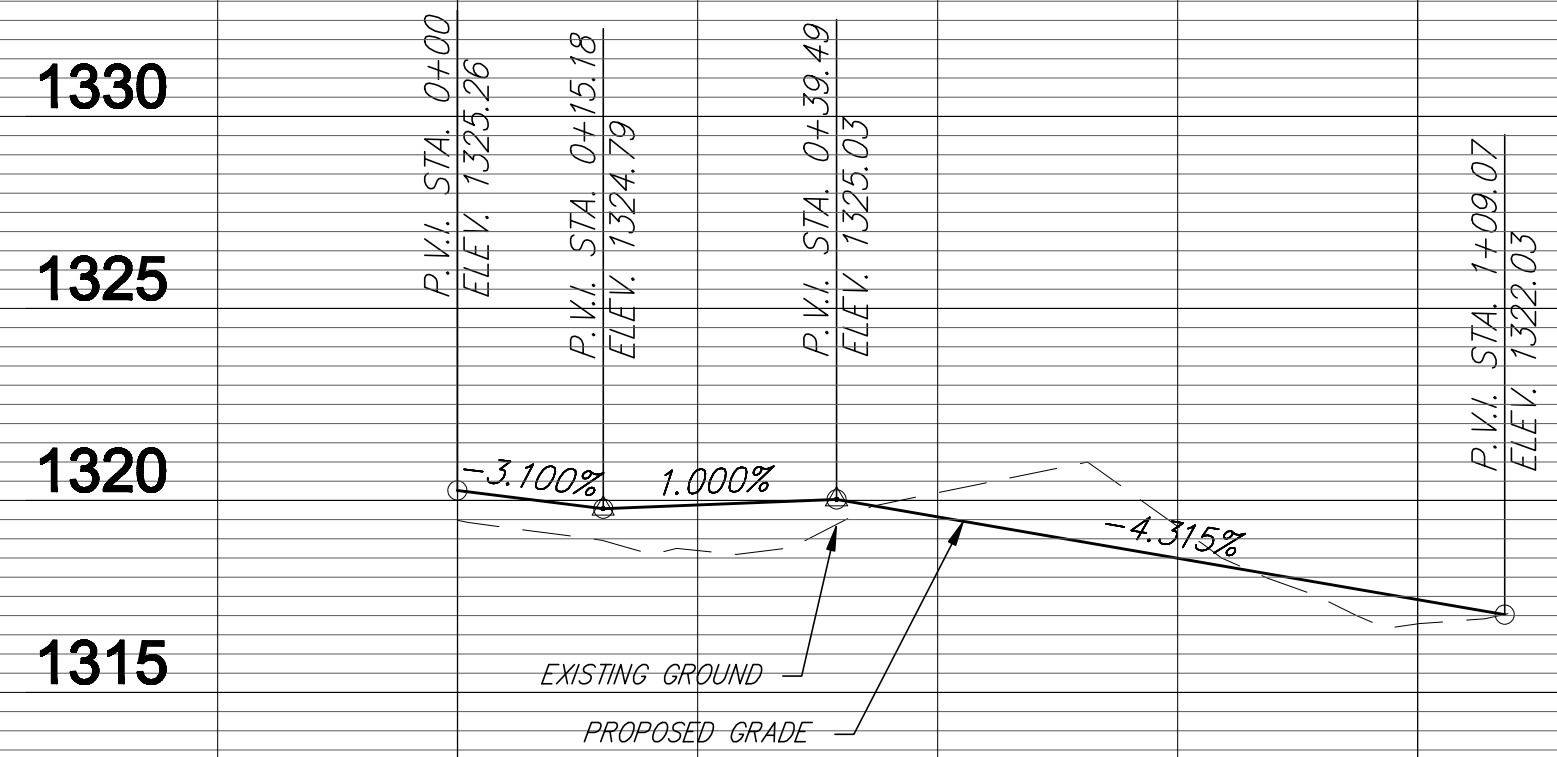
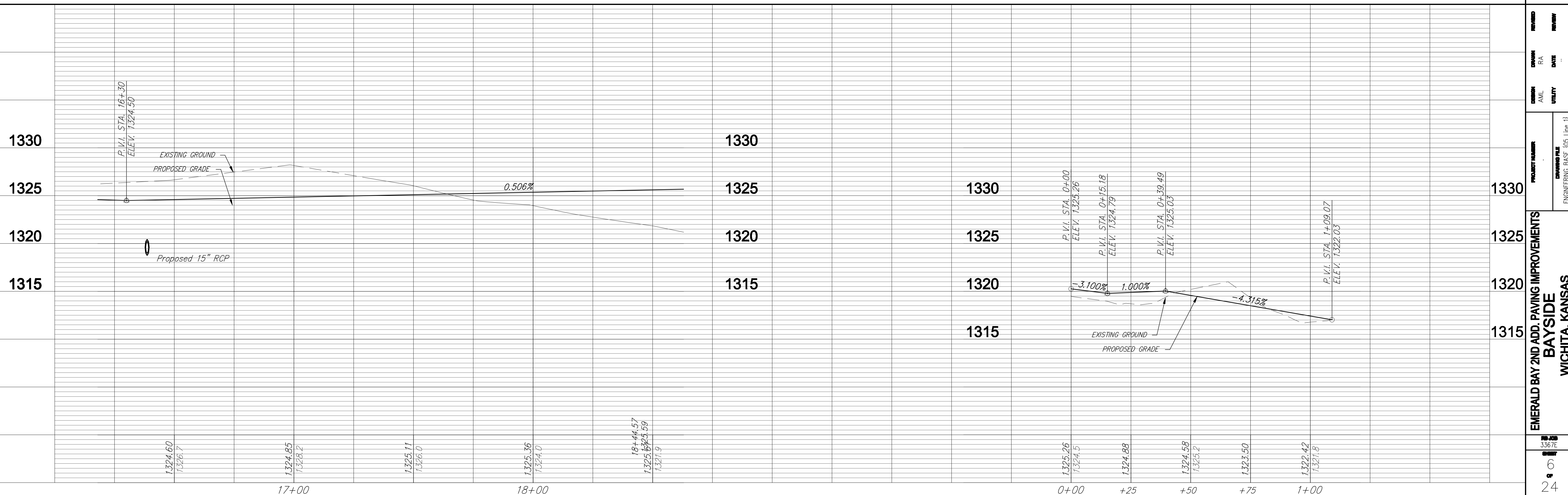
Emerald Bay Estates

Second Addition



CONSTRUCT VALLEY GUTTER PAVEMENT, 7" REINFORCED CONCRETE W/ 5" CRUSHED ROCK BASE AND MONOLITHIC EDGE CURB (3 5/8")

Ruggles & Dolan, P.A.
 Engineering, Surveying, Land Planning
 1100 North Lincoln Street
 Wichita, Kansas 67202
 Phone: 316-261-1100
 Fax: 316-261-1101
 www.rugglesanddolan.com



REVISIONS
 NO. DATE BY
 1 05/15/2011 JLD
 2 05/15/2011 JLD
 3 05/15/2011 JLD
 4 05/15/2011 JLD
 5 05/15/2011 JLD
 6 05/15/2011 JLD

PROJECT NUMBER: 05 Line 13
 DRAWING FILE: ENGINEERING BASE

EMERALD BAY 2ND ADD. PAVING IMPROVEMENTS
 BAYSIDE
 WICHITA, KANSAS

3367E
 6
 24