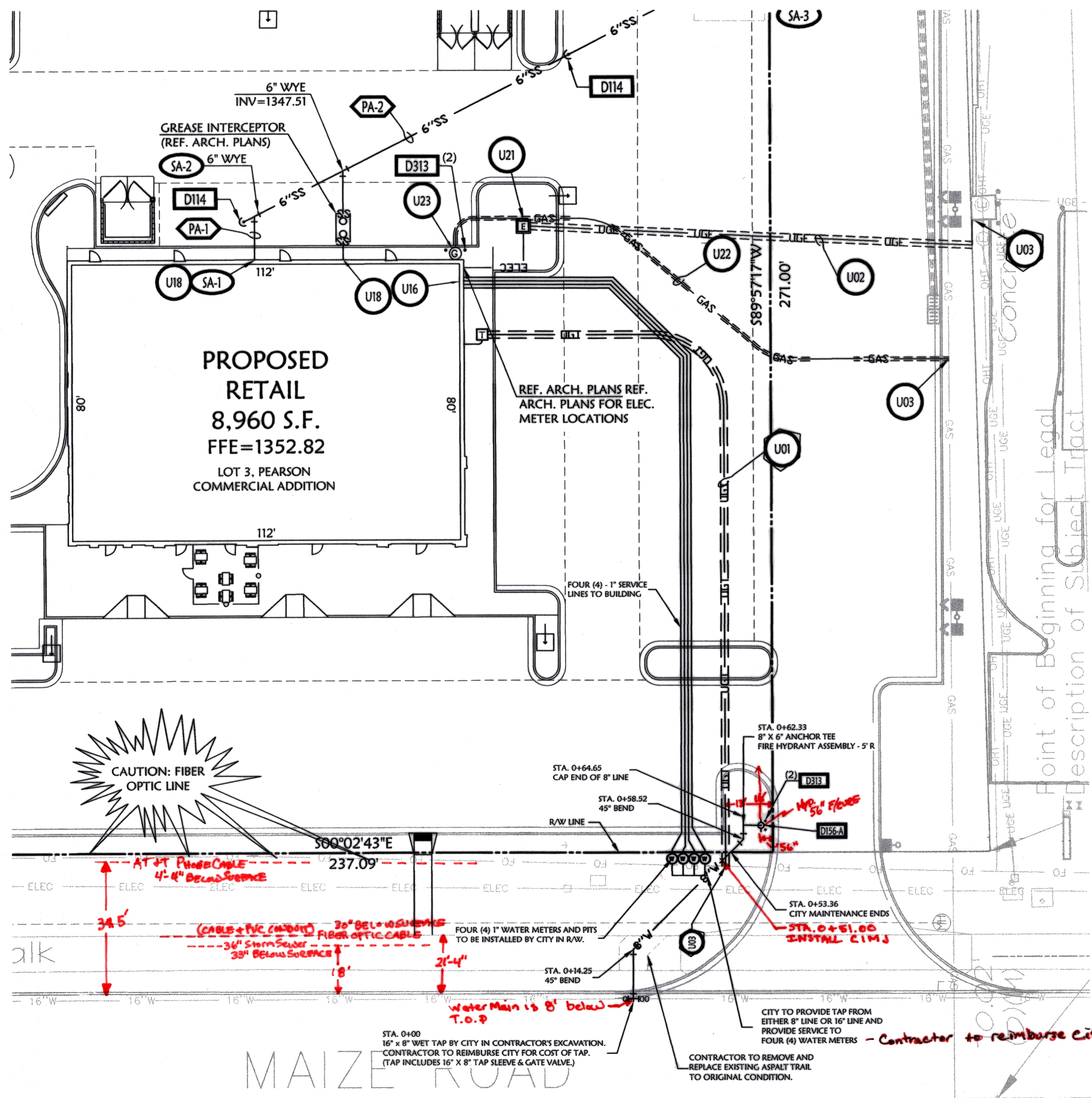
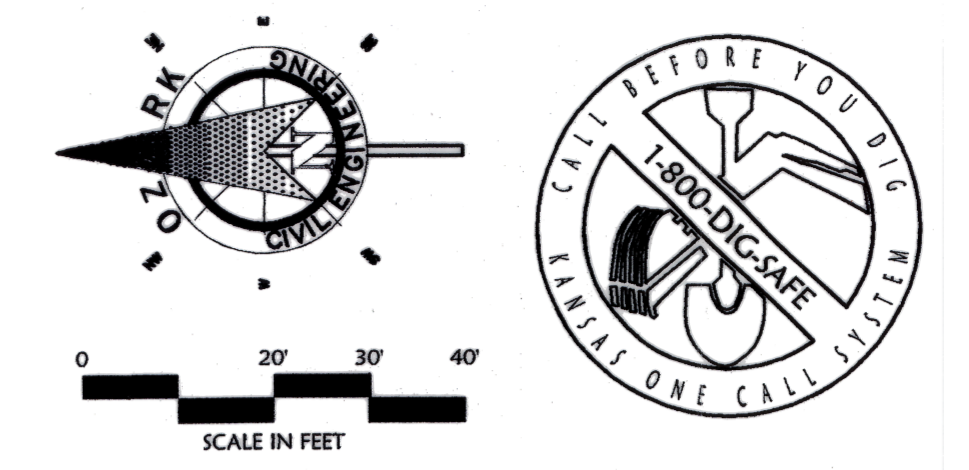
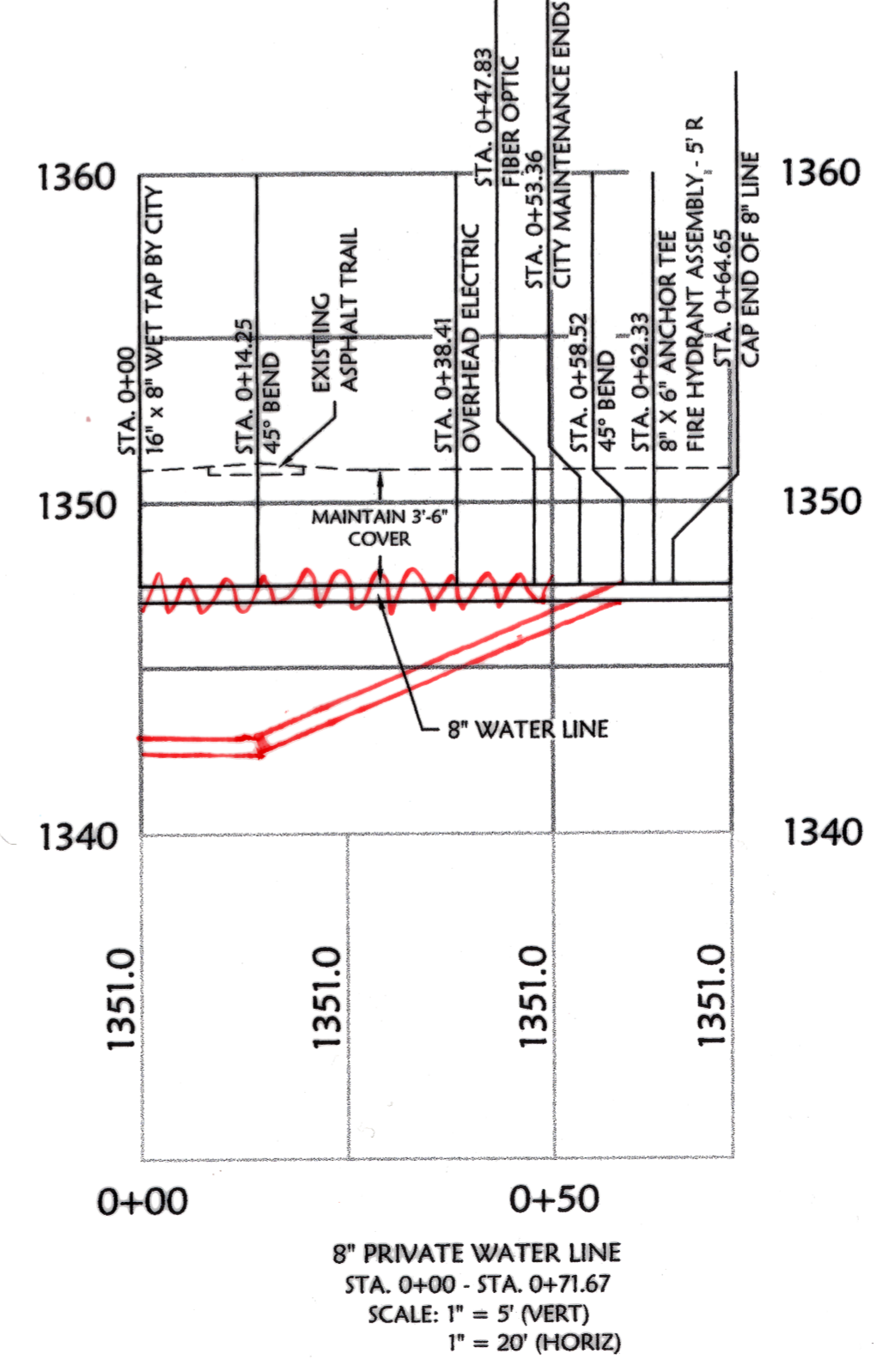


p:\08-0838 mw wichita ks east side development.dwg\projectview\108-0838 ppw.dwg - Plotted on ... @ a scale of 1:1 to hp designjet 1050c by hp by gar



**Fire Hydrant on Private Property Requires:**

1. Licensed Fire Sprinkler Contractor.
2. Fire Dept. to Inspect prior to Backfill.
3. Pressure Test to 200 P.S.I. by Fire Contractor. Witnessed by Fire Dept. Complete NFPA 24 Form to be Signed by Fire Dept.



**UTILITY DETAILS**

Items labeled by the following symbols are shown on this sheet and referred to on detail sheets, which are included as part of this set of plans.

D114	TYPICAL SANITARY SEWER CLEANOUT (TRAFFIC AREAS ONLY)
D156-A	FIRE HYDRANT ASSEMBLY
D131	BOLLARD DETAIL

**UTILITY NOTES**

Items labeled by the following symbols are shown on this sheet.

U01	(2) 4" TELEPHONE CONDUIT (PVC SCHEDULE 40)
U02	INSTALL (2) 4" SCHEDULE 40 PVC CONDUITS
U03	POINT OF CONNECTION (PER LOCAL CODES)
U16	DOMESTIC WATER SERVICE ENTRY (SEE ARCH. PLANS) (SEE THIS SHEET FOR SIZE)
U18	SANITARY SEWER SERVICE ENTRY (PER ARCH. PLANS)
U21	PROPOSED ELECTRIC TRANSFORMER
U22	GAS SERVICE (PER LOCAL GAS COMPANY)
U23	PROPOSED GAS METER WITH BOLLARD PROTECTION

**UTILITY PROPOSED FEATURES**

---	BOUNDARY LINE
---	RIGHT OF WAY LINE
---	EASEMENT LINE
---	CONCRETE CURB AND CUTTER
---	STORM DRAIN (SEE GRADING PLAN FOR SIZE)
---	SANITARY SEWER SERVICE
---	WATER SERVICE
---	UNDERGROUND ELECTRIC SERVICE
---	UNDERGROUND TELEPHONE SERVICE
---	OVERHEAD ELECTRIC SERVICE
---	OVERHEAD TELEPHONE SERVICE
---	FIBER OPTIC CABLE SERVICE
---	GAS SERVICE
---	DROP INLETS (SEE GRADING PLAN FOR TYPE)

**UTILITY GENERAL NOTES:**

ALL WATER LINES SHALL HAVE A MINIMUM OF 3'-6" COVER ABOVE TOP OF PIPE.

ALL SANITARY SEWER LINES SHALL HAVE A MINIMUM COVER OF 3'-0" COVER ABOVE TOP OF PIPE.

PROPOSED UTILITIES TO BE BURIED IN THE SAME TRENCH INSTALLATION SHALL BE COORDINATED AND APPROVED BY LOCAL UTILITY COMPANIES.

VERIFY LOCATION AND DEPTH OF EXISTING UTILITY BEFORE CONSTRUCTING PROPOSED UTILITY.

CONTRACTOR SHALL COORDINATE ANY DISRUPTIONS TO EXISTING UTILITY SERVICES WITH ADJACENT PROPERTY OWNERS.

ALL ELECTRIC, TELEPHONE AND GAS EXTENSIONS INCLUDING SERVICE LINES SHALL BE CONNECTED TO THE APPROPRIATE UTILITY COMPANY SPECIFICATIONS. ALL UTILITY DISCONNECTORS SHALL BE COORDINATED WITH THE DESIGNATED UTILITY COMPANIES.

CONSTRUCTION SHALL NOT START ON ANY PUBLIC UTILITY SYSTEM UNTIL WRITTEN APPROVAL HAS BEEN RECEIVED BY THE ENGINEER FROM THE APPROPRIATE GOVERNING AUTHORITY AND CONTRACTOR HAS BEEN NOTIFIED BY THE ENGINEER.

THE MINIMUM HORIZONTAL SEPARATION BETWEEN THE CLOSEST TWO POINTS OF THE WATER AND SEWER LINE IS TEN FEET (10'). THE MINIMUM VERTICAL SEPARATION BETWEEN THE CLOSEST TWO POINTS OF THE WATER AND SEWER LINE IS TWENTY FEET (20').

ALL TRENCHING, PIPE LAYING, AND BACK FILLING PROCEDURES SHALL BE IN ACCORDANCE WITH FEDERAL OSHA REGULATIONS.

PRIOR TO THE CONSTRUCTION OF OR CONNECTION TO ANY STORM DRAIN, SANITARY SEWER, WATER MAIN OR ANY OF THE DRY UTILITIES, THE CONTRACTOR SHALL EXCAVATE, VERIFY AND CALCULATE ALL POINTS OF CONNECTION AND ALL UTILITY CROSSINGS AND INFORM CIVIL ENGINEERING AND THE OWNER/DEVELOPER OF ANY CONFLICT OR REQUIRED DEVIATIONS FROM THE PLAN. NOTIFICATION SHALL BE MADE A MINIMUM OF 48 HOURS PRIOR TO CONSTRUCTION. CIVIL ENGINEERING AND ITS CLIENTS SHALL BE HELD HARMLESS IN THE EVENT THAT THE CONTRACTOR FAILS TO MAKE SUCH NOTIFICATION.

ALL WATER LINE FITTINGS SHALL BE INSTALLED WITH THRUST BLOCKING PER DETAIL D132-ABR DETAIL SHEETS, OR APPROVED EQUIVALENT ANCHORS.

ALL WATER LINE PIPE BEDDING SHALL BE INSTALLED PER DETAIL D131 (SEE DETAIL SHEETS)

ALL SANITARY SEWER PIPE BEDDING SHALL BE INSTALLED PER DETAIL D131 (SEE DETAIL SHEETS)

CONTRACTOR SHALL BE RESPONSIBLE FOR NOTIFYING THE CITY CONSTRUCTION DIVISION TO SCHEDULE A PRE-CONSTRUCTION MEETING AT LEAST 48 HOURS PRIOR TO STARTING ANY WORK ON THIS PROJECT. CONTRACTOR SHALL OBTAIN ALL NECESSARY PERMITS.

EXISTING UTILITIES ACROSS OR ALONG THE LINE OF THE PROPOSED WORK ARE SHOWN ONLY IN AN APPROXIMATE LOCATION ON THESE PLANS. CONTRACTOR SHALL CALL THE STATE ONE-CALL SYSTEM OR DESIGNATED UTILITY COMPANY PRIOR TO CONSTRUCTION. CONTRACTOR SHALL ON HIS OWN INITIATIVE AND AT NO ADDITIONAL COST LOCATE ALL UNDERGROUND LINES AND STRUCTURES AS NECESSARY. CONTRACTOR SHALL BE RESPONSIBLE FOR ANY DAMAGE TO UNDERGROUND LINES OR STRUCTURES.

FIRE HYDRANTS SHALL BE INSTALLED IN ACCORDANCE WITH THE CITY UTILITY DEPARTMENT STANDARD OR PER DETAIL D156-A (SEE DETAIL SHEETS)

CONTRACTOR SHALL NOT TAP OR OTHERWISE PENETRATE EXISTING WATER AND SEWER MAIN LINES WITHOUT PRIOR APPROVAL FROM THE CITY INSPECTOR. CONTRACTOR IS RESPONSIBLE FOR AVOIDING SPILLAGE OF RAW SEWAGE. CONTRACTOR SHALL PROVIDE ALL SEWER PLEGGING AND PUMPING EQUIPMENT NECESSARY TO AVOID SPILLAGE. CONTRACTOR SHALL NOT OPERATE VALVES ON EXISTING WATER MAINS.

THE EXISTING UTILITIES AND OBSTRUCTIONS SHOWN ARE FROM THE BEST AVAILABLE RECORDS AND SHALL BE VERIFIED BY THE CONTRACTOR TO HIS SATISFACTION PRIOR TO CONSTRUCTION. NECESSARY PRECAUTIONS SHALL BE TAKEN BY THE CONTRACTOR TO PROTECT EXISTING SERVICES AND MAINS, AND ANY DAMAGE TO THEM SHALL BE REPAIRED IMMEDIATELY AT THE CONTRACTOR'S EXPENSE.

IT SHALL BE DISTINCTLY UNDERSTOOD THAT FAILURE TO SPECIFICALLY MENTION WORK WHICH IS REQUIRED TO COMPLETE THE PROJECT SHALL NOT RELIEVE THE CONTRACTOR OF HIS RESPONSIBILITY TO PERFORM SUCH WORK.

CONTRACTOR SHALL MATCH TOP OF PROPOSED SANITARY SEWER MANHOLE TO PROPOSED GRADE. IF A DISCREPANCY OCCURS BETWEEN PROPOSED GRADES AND PROPOSED STRUCTURE TOP, THE GRADING SHALL GOVERN. IF THE DISCREPANCY IS MORE THAN 4" THE CONTRACTOR SHALL CONTACT THE ENGINEER OF RECORD.

ALL UTILITIES, INCLUDING STORM SEWER, SHOWN WITHIN PUBLIC EASEMENTS OR RIGHT OF WAYS SHALL BE CONSTRUCTED TO THE GOVERNING AGENCY'S SPECIFICATIONS. ALL OTHER UTILITIES SHALL BE CONSTRUCTED TO THE CLIENTS OR THE GOVERNING AGENCY'S SPECIFICATIONS, WHICHEVER IS MORE STRINGENT. IF THERE IS A QUESTION AS TO WHICH SPECIFICATIONS SHOULD APPLY THE CONTRACTOR SHALL CONTACT THE ENGINEER OF RECORD.

IF SANITARY SEWER MANHOLE IS LOCATED IN A GRASS AREA OR SLOPE, CONTRACTOR SHALL CONSTRUCT MANHOLE TOP TO AN ELEVATION 6" INCHES HIGHER THAN THE PROPOSED GRADE. IF THIS CANNOT BE ACHIEVED THEN CONTRACTOR SHALL USE A WATER TIGHT MANHOLE COVER THAT MEETS OR EXCEEDS THE OWNER'S/DEVELOPER'S STANDARD SITE SPECIFICATIONS.

ALL WATER MAINS SHALL BE HYDROSTATICALLY TESTED AND DISINFECTED BEFORE ACCEPTANCE. SEE THE WORK SPECIFICATIONS.

CONTRACTOR SHALL COORDINATE WITH UTILITY COMPANIES (1) ADJUSTING EXISTING UTILITY LINE AS REQUIRED BY CUT AND FILL AND IN ADDITIONAL COST TO THE OWNER.

CONTRACTOR SHALL NOTIFY ENGINEER OF RECORD AND ARCHITECT SHOULD ANY LIGHT POLE OR SIGN FOUNDATIONS CONFLICT WITH ANY UTILITY AND/OR STORM SEWER SYSTEM.

GENERAL CONTRACTOR SHALL PROVIDE 2" x 2" x 6" THICK CONCRETE APRON AT ALL CLEANOUTS, GATE VALVES, AND METER BOXES ETC. OUTSIDE OF BUILDING AND IN PAVED AREAS.

GENERAL CONTRACTOR WILL BE RESPONSIBLE FOR ALL TAP AND THE ON FEE REQUIRED, AS WELL AS COST OF UNDERGROUND SERVICE CONNECTIONS TO THE BUILDING.

ELECTRICAL SERVICE TO PAD MOUNTED TRANSFORMER SHALL BE RUN UNDERGROUND, FROM ROAD RIGHT-OF-WAY TO TRANSFORMER LOCATION. ASSOCIATED COST BY GENERAL CONTRACTOR.

UTILITY CONTRACTOR SHALL FURNISH (2) - 4" TELEPHONE CONDUITS AS SHOWN ON PLAN, VERIFY LOCATION OF TIE IN AT TELEPHONE COMPANIES SERVICE LINE. PROVIDE NYLON PULL CORD INSIDE CONDUIT.

DIMENSIONS SHOWN ARE TO CENTERLINE OF PIPE OR FITTING UNLESS OTHERWISE NOTED.

ALL WATER AND SANITARY LEADS TO BUILDING SHALL END OUTSIDE THE BUILDING LIMITS AS SHOWN ON PLAN AND SHALL BE PROVIDED WITH A TEMPORARY PLUG AT END.

ALL FIRE HYDRANTS SHALL BE PROVIDED WITH AN APPROVED GATE VALVE A MAXIMUM OF 5' FROM HYDRANT.

REFER TO FIRE PROTECTION SHEETS FOR LOCATION AND DETAIL OF FIRE LINE LEAD IN FIRE LINE SHALL BE STUBBED UP 5' ABOVE F.F.E. IN SPRINKLER ROOM.

REFER TO PLUMBING SHEETS FOR LOCATION OF SEWER, DOMESTIC, AND IRRIGATION CONNECTIONS.

ALL WORK TO BE DONE IN STRICT ACCORDANCE WITH OWNERS STANDARD SITE SPECIFICATIONS.

**SANITARY SEWER SCHEDULE**

Struct. No. & Type <sup>a</sup>	Detail No.	RIM Elev.	Inv. Out	Pipe No.	Pipe Length, Size, Type & Slope	Inv. In	Struct. No. & Type <sup>a</sup>
SA-1	CONNECTION TO BUILDING		1347.77	PA-1	14 LF 6" PIPE @ 0.65%		SA-2
SA-2			1347.69	PA-2	148 LF 6" PIPE @ 0.65%	1346.71	SA-3
SA-3	CONNECTION TO EXIST. MANHOLE		1346.51				

<sup>a</sup> MH = MANHOLE - CO = CLEAN OUT - CB = CONNECTION TO BUILDING - END = END OF PIPE STUB - EX = EXISTING STRUCTURE

Sanitary Sewer Line "A"

DESCRIPTION

DATE

11/16/09

AS-Built Plans  
Contractor: CK Plumbing/Mike Todd Plumbing  
Inspector: Randy Voth, C.E.D.  
PAE BY: C.C. 1-6-2010

WATER LINE PLAN AND PROFILE

A NEW FACILITY FOR:

**EASTSIDE DEVELOPMENT, LLC**

Wichita, Kansas  
Maize Rd. N. & W. 29th St.

DRAWN BY: NMS  
APPV. BY: SM  
DWG. NAME: 08-0838 PPW1.dwg  
DATE: 9-9-09  
JOB NO: 08-0838  
SHEET NO: 2