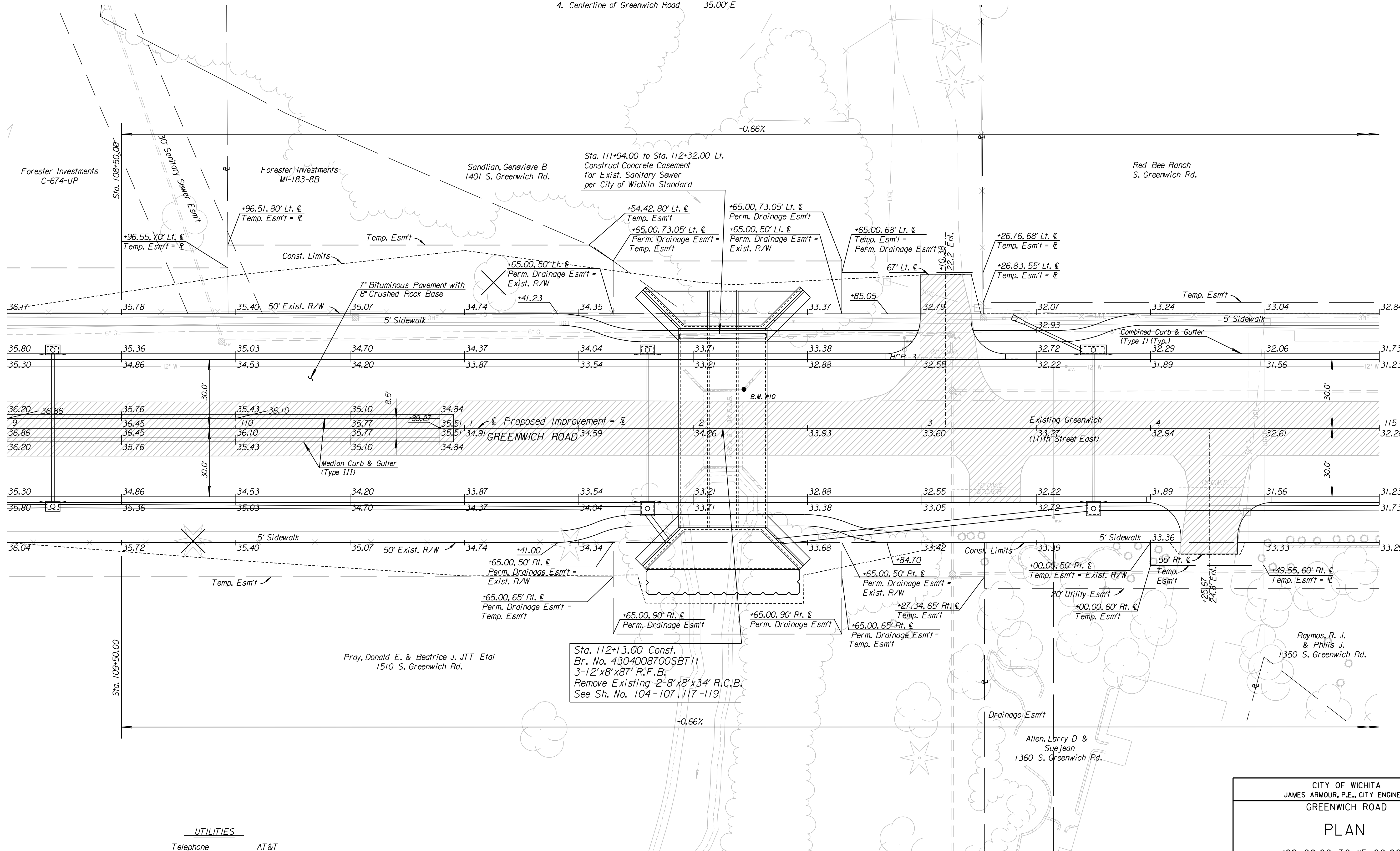
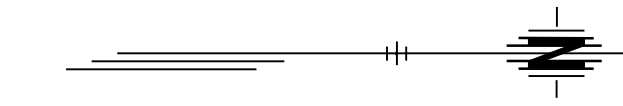


|          |        |              |      |           |              |
|----------|--------|--------------|------|-----------|--------------|
| COUNTY   | STATE  | PROJECT NO.  | YEAR | SHEET NO. | TOTAL SHEETS |
| SEDGWICK | KANSAS | 87 N-0386-01 | 2009 | 17        | 255          |

HCP Pt. 3 =  
 @ Sta. 112+92.43, 34.50' Lt.  
 1. 1/2" Rebar with Orange Cap  
 2. Nail & tin in power pole  
 3. Chiseled \*\* NE Cor R.C.B.  
 4. Centerline of Greenwich Road

37.85' NW  
 72.70' SE  
 35.00' E



K:\35751A\CADD\SHEETS\ROADWAY\GRNHPL05.dgn  
 SURV. PLOT CADD DES. JRI TR. CKD. JUR APP.

**UTILITIES**

|                |                    |
|----------------|--------------------|
| Telephone      | AT&T               |
| Electric       | Westar             |
| Gas            | Kansas Gas Service |
| Water          | City of Wichita    |
| Sanitary Sewer | City of Wichita    |
| Cable TV       | Cox Communications |

Sta. 112+13.00 Const.  
 Br. No. 4304008700SBT11  
 3-12'x8'x87" R.F.B.  
 Remove Existing 2-8'x8'x34' R.C.B.  
 See Sh. No. 104-107, 117-119

B.M. #10 Chiseled \*\* on R.C.B. hub guard  
 15' Rt. @ Sta. 112+22.19 El. 1332.64

See Landscaping Plans for  
 installation of irrigation sleeves

|  |                 |
|--|-----------------|
| CITY OF WICHITA<br>JAMES ARMOUR, P.E., CITY ENGINEER |                 |
| GREENWICH ROAD                                       |                 |
| PLAN   |                 |
| 109+00.00 TO 115+00.00                               |                 |
|  |                 |
| SCALE 1"=20'   | DATE 11/23/2009 |
| DWG. NO. 35751A                                      |                 |