

COUNTY	STATE	PROJECT NO.	YEAR	SHEET NO.	TOTAL SHEETS
SEDGWICK	KANSAS	87 N-0386-01	2009	21	255

HCP Pt. 5 =  
 @ Sta. 126+32.57, 27.50' Lt.  
 1. 1/2" Rebar with Orange Cap  
 2. Nail & tin in power pole  
 3. Nail & tin on Steel "T" fence post  
 4. Centerline Greenwich Road

P.I. @ Sta. 126+54.39  
 I. Not set

24.80' SW  
 42.60' NW  
 27.50' E

Sta. 122+63.69 to Sta. 123+39.27 Lt.  
 Construct Concrete Casement  
 for Exist. Sanitary Sewer  
 per City of Wichita Standard

Sta. 122+85.00 Const.  
 Br. No. 4304008700SBT09  
 5'-10"x4"x123' R.C.B.  
 45° Skew Rt.  
 Remove Existing  
 2'-5"x4' R.C.B. and 8.7' MAC  
 See Sh. No. 108-111, 117-119

CAUTION! Gas Line  
 under wingwall and apron.  
 Contact Jim Coe,  
 KGS, 832-3126  
 Prior to Excavation

Starr, Kathleen Lankin  
 953 S. Greenwich Rd.

Leland, Keith R  
 & Carol F Rev Tr  
 900 S. Greenwich Rd.

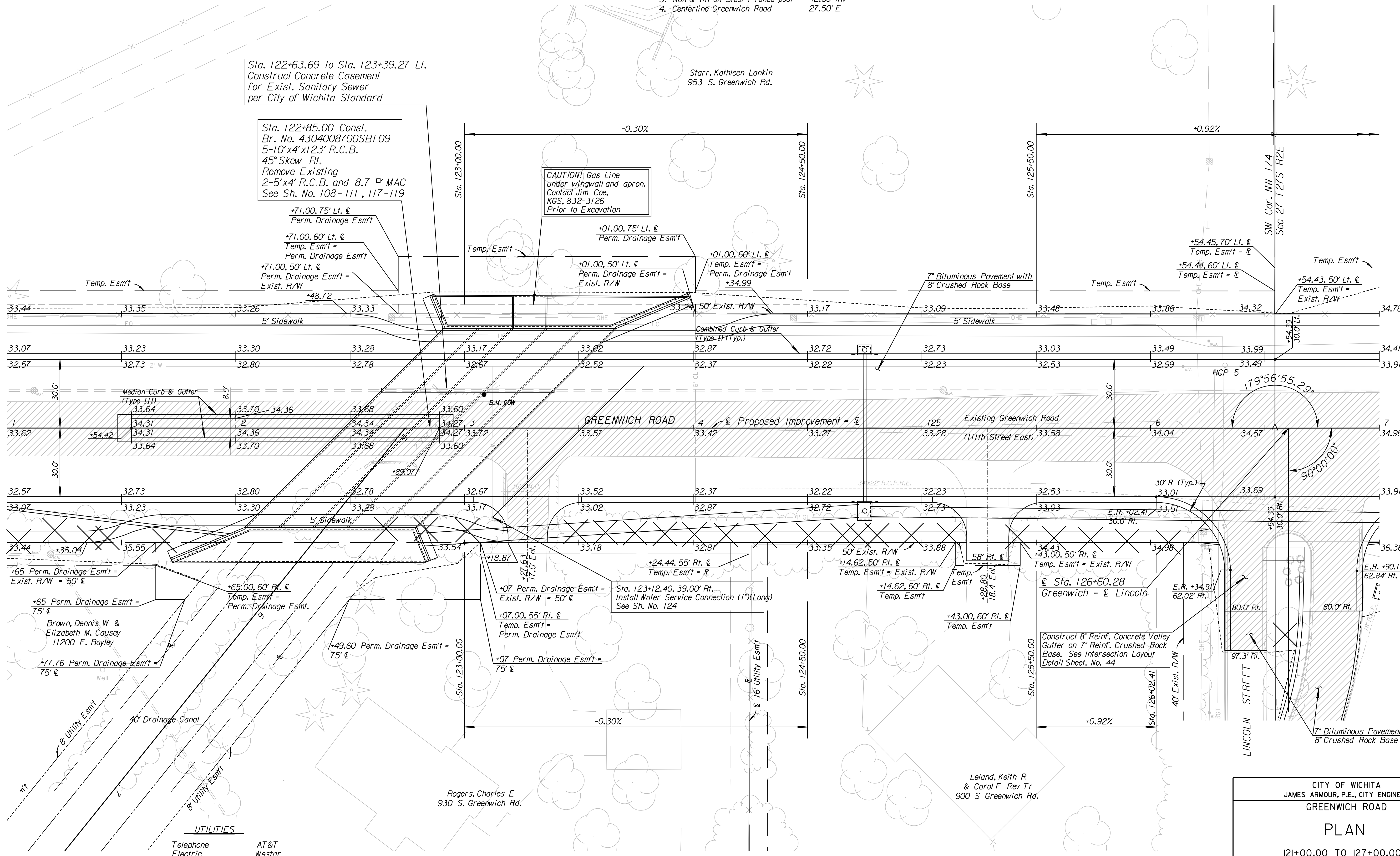
Rogers, Charles E  
 930 S. Greenwich Rd.

City of Wichita B.M. Brass Disk on R.C.B. hub guard  
 15' Lt. @ Sta. 123+08.53 El. 1334.01

SW Cor NW 1/4 Sec. 27, T27S, R2E  
 1. 0.00' Rt. of @ Sta. 126+54.39  
 2. Not Found

B.M. #11 Chiseled "t" on top of C-G inlet  
 170' Rt. @ Sta. 126+75.25 El. 1335.86

See Landscaping Plans for  
 installation of irrigation sleeves



K:\35751A\CADD\SHEETS\ROADWAY\GRNWHPLOT.dgn  
 SURV. - PLOT CADD DES. - JRI TR. - CKD. - JUR APP.

**UTILITIES**

Telephone  
 Electric  
 Gas  
 Water  
 Sanitary Sewer  
 Cable TV

AT&T  
 Westar  
 Kansas Gas Service  
 City of Wichita  
 City of Wichita  
 Cox Communications

CITY OF WICHITA  
 JAMES ARMOUR, P.E., CITY ENGINEER  
 GREENWICH ROAD

**PLAN**

121+00.00 TO 127+00.00

**PB PARSONS BRINCKERHOFF**  
 Wichita, Kansas

SCALE 1"=20' DATE 11/23/2009 DWG. No. 35751A