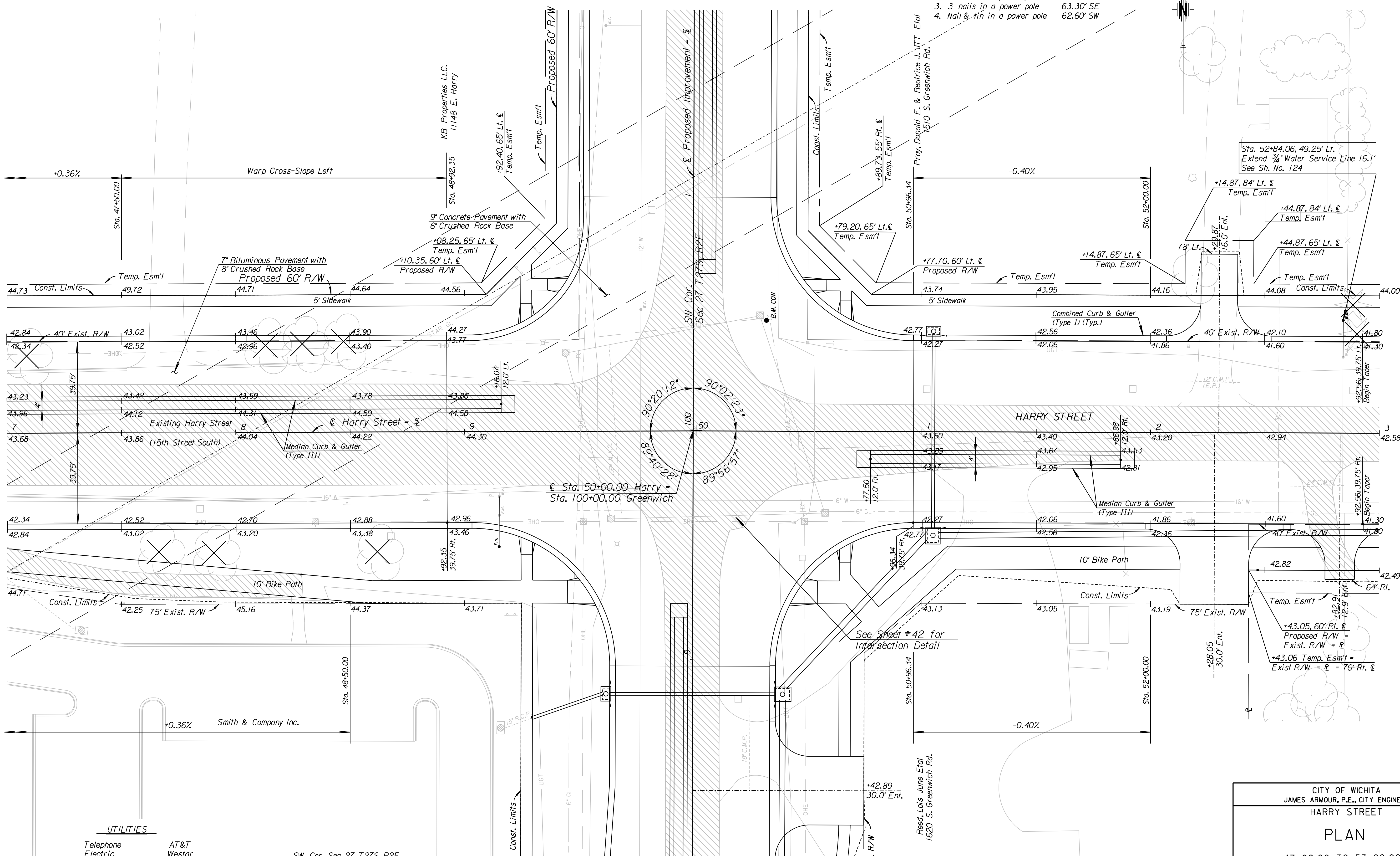
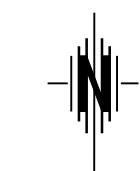


COUNTY	STATE	PROJECT NO.	YEAR	SHEET NO.	TOTAL SHEETS
SEDGWICK	KANSAS	87 N-0386-01	2009	33	255

- P.I. @ Sta. 50+00.00
1. Iron pin flush with pavement 55.30' NE
  2. 3 nails in a power pole 63.30' SE
  3. 3 nails in a power pole 62.60' SW
  4. Nail & tin in a power pole



**UTILITIES**

- |                |                            |
|----------------|----------------------------|
| Telephone      | AT&T                       |
| Electric       | Westar                     |
| Gas            | Kansas Gas Service         |
| Gas            | Southern Star Gas Pipeline |
| Water          | City of Wichita            |
| Traffic Signal | City of Wichita            |
| Cable TV       | Cox Communications         |

- SW Cor. Sec 27, T27S, R2E
1. Iron pin flush with pavement
  2. 0.00' Rt. of @ Sta. 50+00.00
  3. 3 nails in a power pole
  4. 3 nails in a power pole
  5. Nail & tin in a power pole

- 55.30' NE  
63.30' SE  
62.60' SW

City of Wichita B.M. Brass Disk on traffic signal base  
48.42' Lt. @ Sta. 50+31.97 El. 1343.91

CITY OF WICHITA JAMES ARMOUR, P.E., CITY ENGINEER HARRY STREET	
PLAN 47+00.00 TO 53+00.00	
 <b>PARSONS BRINCKERHOFF</b> Wichita, Kansas	
SCALE 1"=20'	DATE 11/23/2009
DWG. NO. 35751A	

K:\35751A\CADD\SHEETS\ROADWAY\HARRY\PL03.dgn  
 SURV. PLOT CADD DES. JRI TR. CKD. JJR APP.