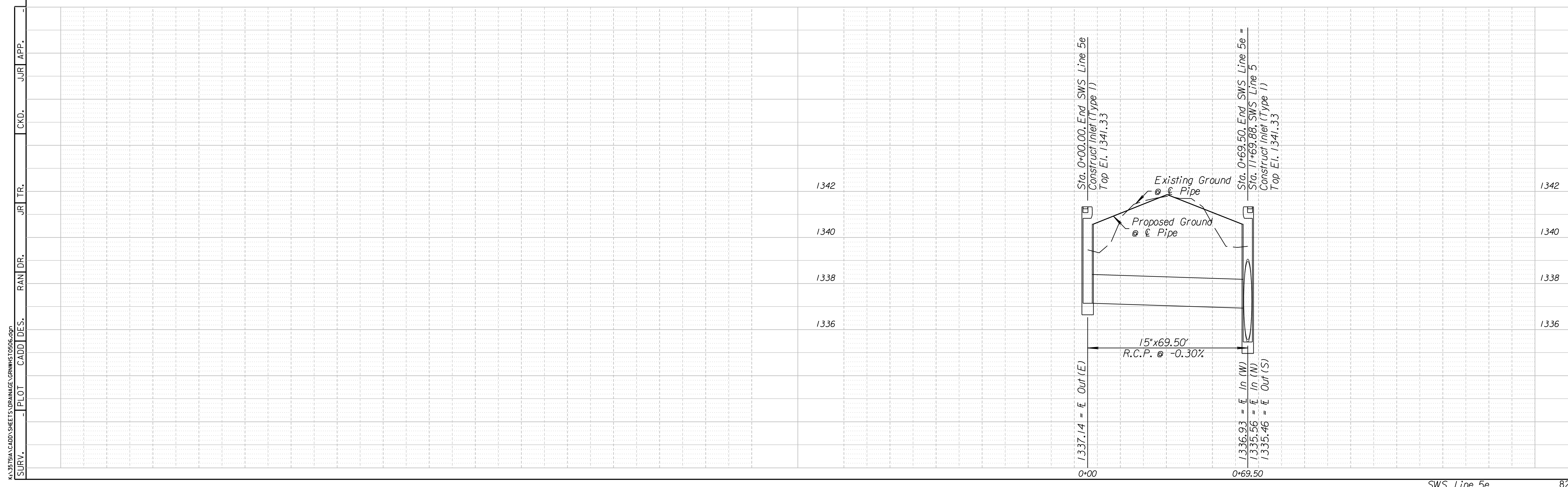


Sta. 0+00.00, Begin SWS Line 5e =  
 £ Sta. 134+50.00, 34.50' Lt.  
 Construct Inlet (Single) (Type 1)  
 (6'-4" x 4'-4")  
 Install 15' x 69.50'  
 Storm Sewer (RCP) (E)  
 See Sh. No's 90, 96 & 97

Sta. 0+69.50, End SWS Line 5e =  
 Sta. 11+69.88, SWS Line 5 =  
 £ Sta. 134+50.00, 35.00' Rt.



K:\35751A\CADD\SHEETS\DRAINAGE\GRW\W10506.dgn  
 SURV. PLOT CADD DES. RAN DR. JR TR. CKD. JJR APP.