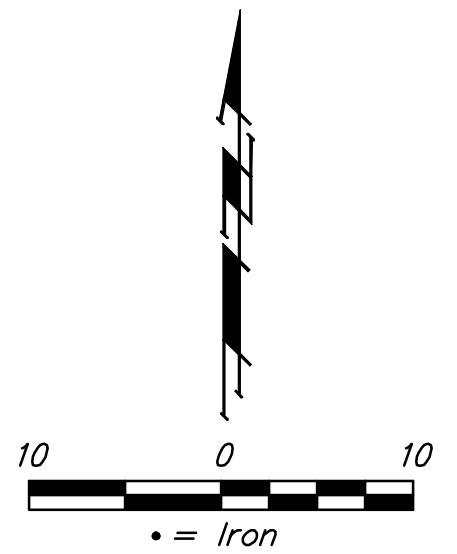


BENCHMARKS:

BM#1: "□" Cut in the east end of the southeast curb return at the intersection of Mid-Continent Rd. & University in Wichita, Sedgwick County, KS.
Elevation = 1324.08 NGVD29

BM#2: The northeast corner of brick sign base 330' north of Taft Ave. along the CL of S. Ridge Rd. and 84' west of the CL of Ridge Rd. in Wichita, Sedgwick County, Kansas.
Elevation = 1327.11 NGVD29

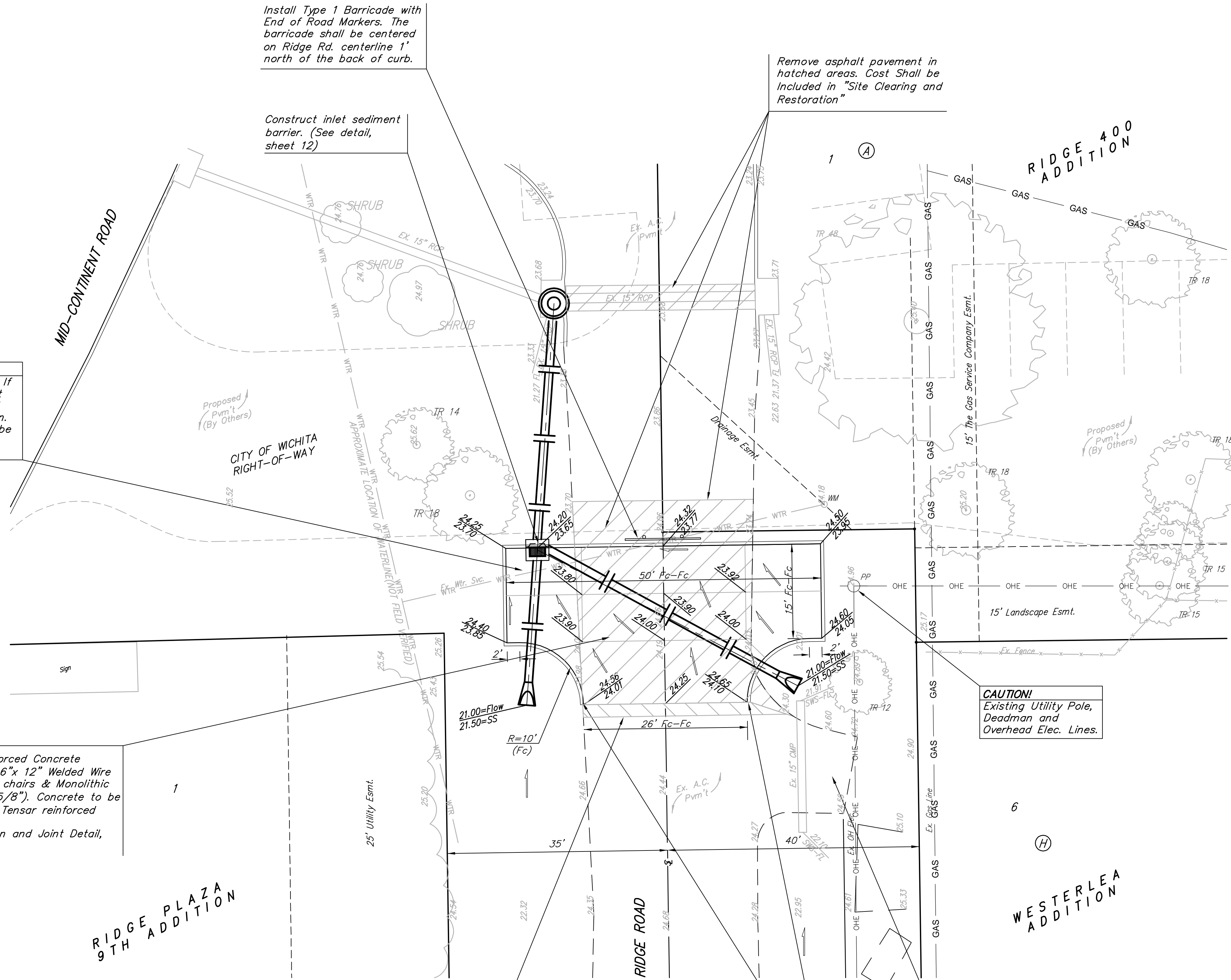


CAUTION!
Existing Water Service Line. If water service line is not yet abandoned, Contractor shall cap service line at the main. After abandoned, line may be removed as necessary for street & sws construction.

Install Type 1 Barricade with End of Road Markers. The barricade shall be centered on Ridge Rd. centerline 1' north of the back of curb.

Remove asphalt pavement in hatched areas. Cost Shall be Included in "Site Clearing and Restoration"

Construct inlet sediment barrier. (See detail, sheet 12)



Contractor to regrade to drain all disturbed areas and areas within 10' of the back of curb.

CAUTION!
Existing Utility Pole, Deadman and Overhead Elec. Lines.

Const. 6" Reinforced Concrete Pavement with 6"x 12" Welded Wire Fabric with bar chairs & Monolithic Edge Curb (6-5/8"). Concrete to be placed over 5" Tensar reinforced rock base. See Construction and Joint Detail, Sheet 2.

LEGEND:

Pavement Removal Area	
Pavement Removal & Replacement Area	

All areas disturbed during construction shall be seeded, mulched, and fertilized as follows (Permanent Seeding):
Seed: Kansas Premium Fescue Blend: 8 lbs./1000 sq. ft.
 Annual Rye: 4 lbs./1000 sq. ft.
Mulch: Prairie Hay: 2 tons/acre
Fertilizer: 12-24-12: 8 lbs./1000 sq. ft.
 Only mulch areas not covered by Erosion Control Mat. All costs associated with seeding, mulching, and fertilizing shall be included in bid item "Project Seeding." All seeding operations shall conform to City of Wichita Standard Specifications.

Saw Cut 2' additional asphalt to form neat construction joint. Replace 2' (6 S.Y) of Existing Asphalt. Cost of removal and replacement shall be Included in "Site Clearing and Restoration"

Transition curb from flat to top of curb in 2' at end of curb (both sides).

Contractor shall ensure access to drive entrance throughout construction.

	RIDGE 400 ADDITION RIDGE ROAD HAMMERHEAD STREET IMPROVEMENTS	
	Baughman Company, P.A. 315 Ellis St. Wichita, KS 67211 P 316-262-7271 F 316-262-0149 ENGINEERING SURVEYING PLANNING LANDSCAPE ARCHITECTURE	
PROJECT NUMBER 472-84798	DESIGN AEG	DRAWN AEG
REVISIONS:	APPROVED DATE 12/09	SCALE NOTED SHEET 3 OF 14
E:\eng\Ridge 400\base.dwg		09-09-E377