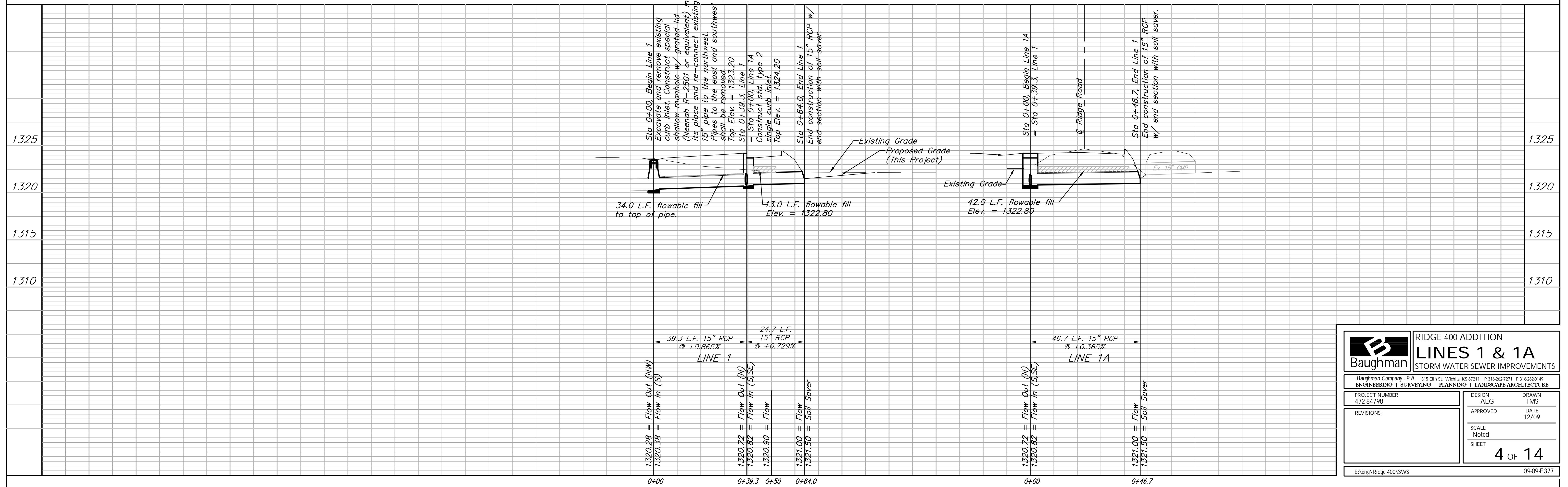
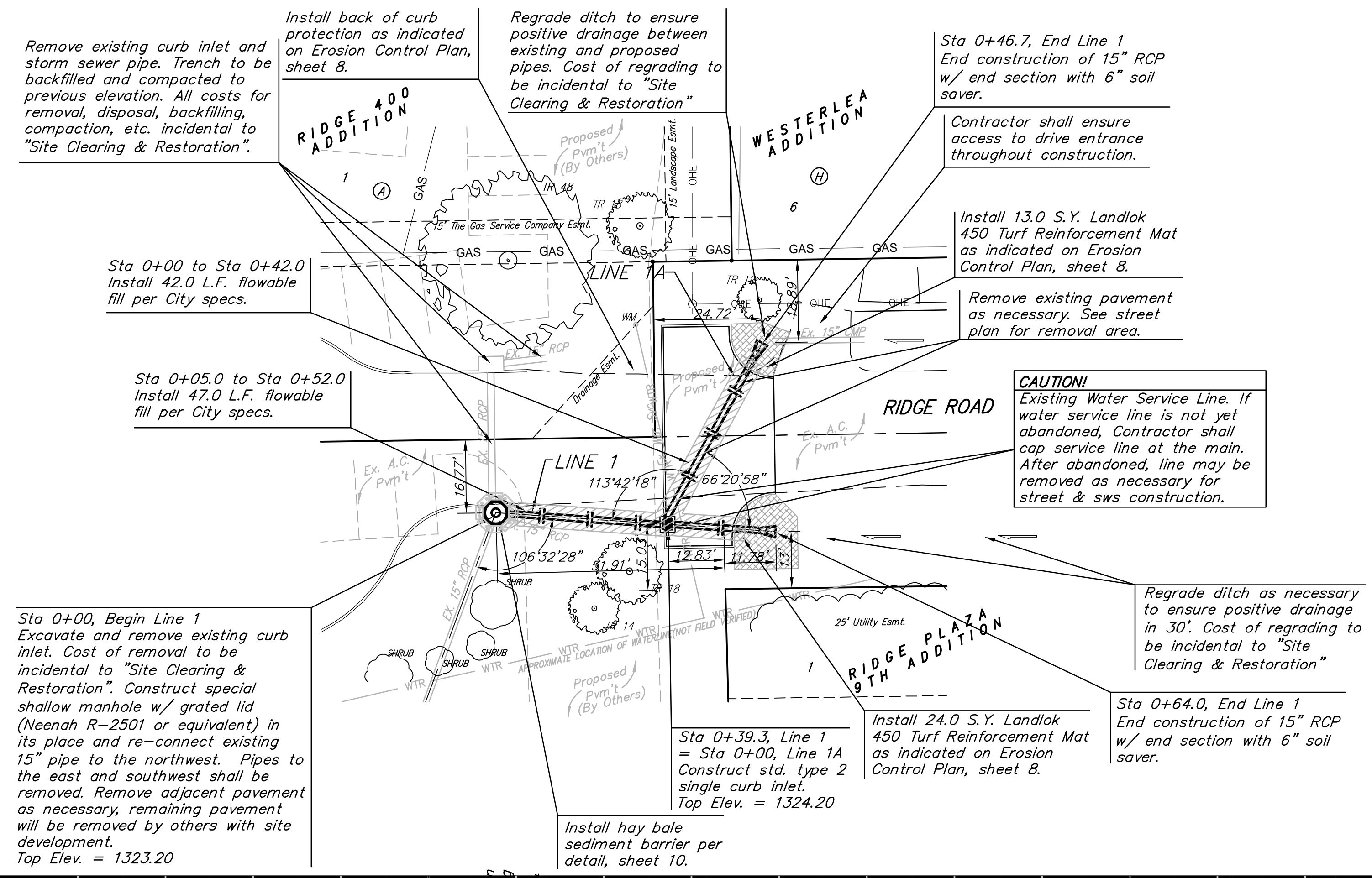
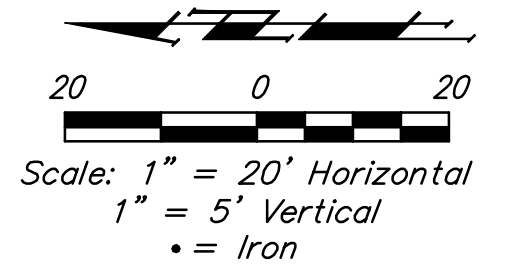


**BENCHMARKS:**  
 BM#1: "□" Cut in the east end of the southeast curb return at the intersection of Mid-Continent Rd. & University in Wichita, Sedgwick County, KS. Elevation = 1324.08 NGVD29

BM#2: The northeast corner of brick sign base 330' north of Taft Ave. along the CL of S. Ridge Rd. and 84' west of the CL of Ridge Rd. in Wichita, Sedgwick County, Kansas. Elevation = 1327.11 NGVD29



	<b>RIDGE 400 ADDITION</b> <b>LINES 1 &amp; 1A</b> STORM WATER SEWER IMPROVEMENTS	
	<small>Baughman Company, P.A. 315 Elm St. Wichita, KS 67211 P 316-262-1271 F 316-262-0119          ENGINEERING   SURVEYING   PLANNING   LANDSCAPE ARCHITECTURE</small>	
PROJECT NUMBER 472-84798	DESIGN AEG	DRAWN TMS
REVISIONS:	APPROVED DATE 12/09	SCALE Noted SHEET <b>4 OF 14</b>
<small>E:\eng\Ridge 400\SW</small>		<small>09-09-E377</small>