

Remove full-depth and replace approx. 243 SY existing pavement. (Sawcut Limits to be Straight and Clean).  
Re-construct Pavement per City of Wichita Typical Pavement detail, see detail sheet 6.

CL SWS Sta. 0+00 to Sta. 1+94  
Install approx. 194 LF Flowable Fill.

CL SWS Sta. 0+00.00 to Sta. 1+06.77  
Install 106.77 LF 15" Storm Sewer. Use flowable fill above pipe constructed in Street.  
(Slope Pipe @ 0.40%)

CL SWS Sta. 1+06.77 to Sta. 1+87.56  
Install 80.79 LF 15" Storm Sewer. Use flowable fill above pipe constructed in Street.  
(Slope Pipe @ 2.93%)

Remove and Replace 15 L.F. of Combined Curb & Gutter per detail, sheet 6

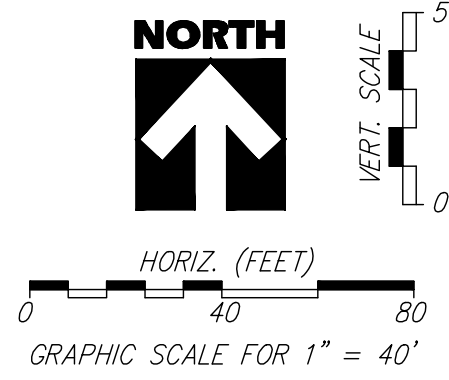
CL SWS Sta. 1+87.56 to Sta. 4+94.98  
Install 307.42 LF 15" Storm Sewer  
(Slope Pipe @ 1.75%)

CL SWS Sta. 4+94.98 to Sta. 6+18.52  
Install 123.54 LF 15" Storm Sewer  
(Slope pipe @ 3.50%)

Remove and replace approx. 80 SF existing concrete sidewalk, in kind. (Sawcut Limits to be Straight and Clean)

CL SWS Sta. 6+18.52 (N.50094.208, E.9905.652)  
Construct 15" Flared End Section with Grating, see details Sht. 5.  
FL in, 1391.50

Detention Pond Improvements, by others. Refer to "Comotara 1st Addition, Detention Basin Drainage Improvements" for proposed pond grades and construction limits.  
Detention Basin Intake Elev. = 1391.50 USGS



- LEGEND**
- WV = Water Valve
  - FH = Fire Hydrant
  - ⊙ = Man Hole
  - PP = Power Pole
  - LP = Light Pole

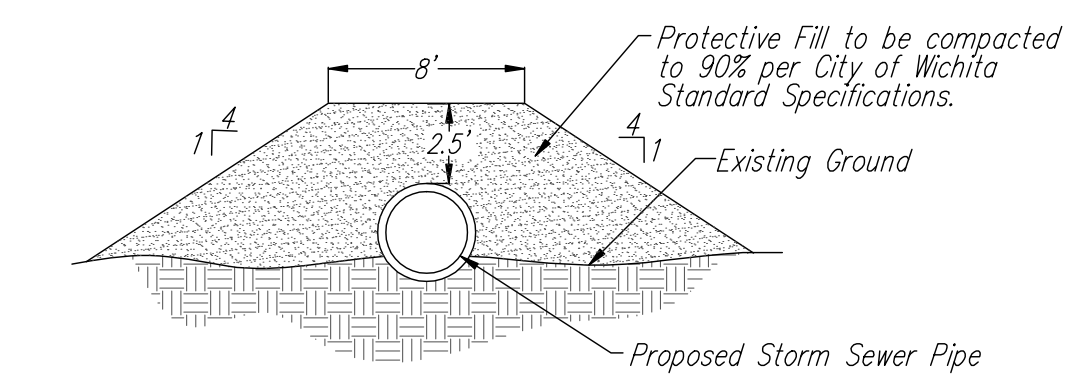
**RECAPITULATION OF QUANTITIES:**

- PAID AS MEASURED QUANTITY-**
- (194) LF Flowable Fill
  - (243) SY Pavement Rem./Repl.
  - (128) SY 2" AC Mill and Overlay Existing Pavement
  - (15) LF Combined Curb & Gutter Removal
  - (15) LF Combined Curb & Gutter (6 3/4" & 1 1/2")
  - (879) LF Silt Fence
  - (1606) SF Curlex Temporary Erosion Control Mat
  - (1) EA Inlet Protection
  - (1) EA Stabilized Construction Entrance
  - (10) LF Conc. &/or Asph. Sawk, Drive, &/or Parking Lot Removed
  - (160) SF Sidewalk Concrete (4")

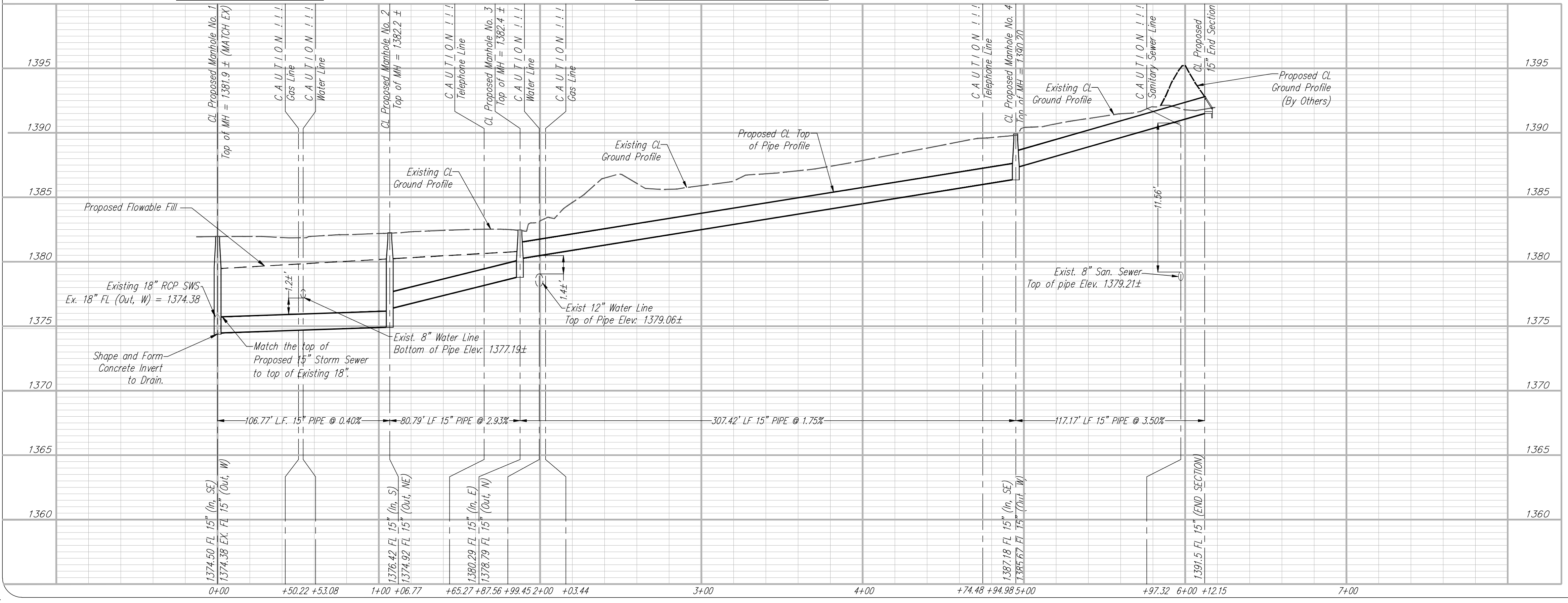
- PAID AS LUMP SUM-**
- (1) LS Site Clearing and Restoration
  - (619) LF 15" RCP Storm Sewer
  - (4) EA Standard 4" Diameter Manhole

**SPECIAL NOTES:**

1. THE CONTRACTOR SHALL USE BEST MANAGEMENT PRACTICES TO CONTROL EROSION AND SEDIMENT DISCHARGE IN ALL DISTURBED AREAS OF CONSTRUCTION. THE CONTRACTOR SHALL PROVIDE ALL NECESSARY MATERIALS, AND EQUIPMENT, AND LABOR TO CONSTRUCT, OPERATE AND MAINTAIN TEMPORARY EROSION AND SEDIMENT CONTROLS DURING CONSTRUCTION.
2. THE CONTRACTOR SHALL FIELD VERIFY HORIZONTAL AND VERTICAL LOCATIONS OF EXISTING BURIED UTILITY LINES PRIOR TO CONSTRUCTION. REPORT ANY DISCREPANCIES TO THE ENGINEER.
3. THE CONTRACTOR SHALL PRESERVE HEDGE ROW AS CONSTRUCTION PERMITS.
4. THE CONTRACTOR SHALL REMOVE AND RESET EXISTING PLAYGROUND EQUIPMENT AND SURFACE MATERIALS. EXISTING SURFACE MATERIAL SHALL BE RESET WITH EQUAL (OR BETTER) MATERIAL, INCLUDING LANDSCAPE TIMBERS, BEDDING MATERIALS, AND RUBBER SHAVING. THE CONTRACTOR SHALL NOTIFY THE OWNER OF LOT 18, AT LEAST ONE WEEK IN ADVANCE OF CONSTRUCTION ON SAID YARD.
5. THE CONTRACTOR SHALL INSTALL CURLEX EROSION CONTROL MATTING BEHIND THE EXISTING CURB ALONG MAINSGATE ROAD IF THIS AREA IS TO BE DISTURBED.



**PROTECTIVE FILL DETAIL**



**YOUNG & ASSOCIATES, P.A.**  
Professional Civil Engineering Consultants  
100 S. Geary, Derby, KS 67037  
tele: (316)788-2552 fax: (316)788-4408  
email: engineering@yngpa.com

**15" STORM SEWER PLAN & PROFILE**

COMOTARA 2ND ADDITION  
City of Wichita  
Sedgwick County, Kansas

scale: as noted  
drawn by: dsb  
date: 1/4/10  
P/N: 09-272  
revisions:

- △
- △
- △
- △