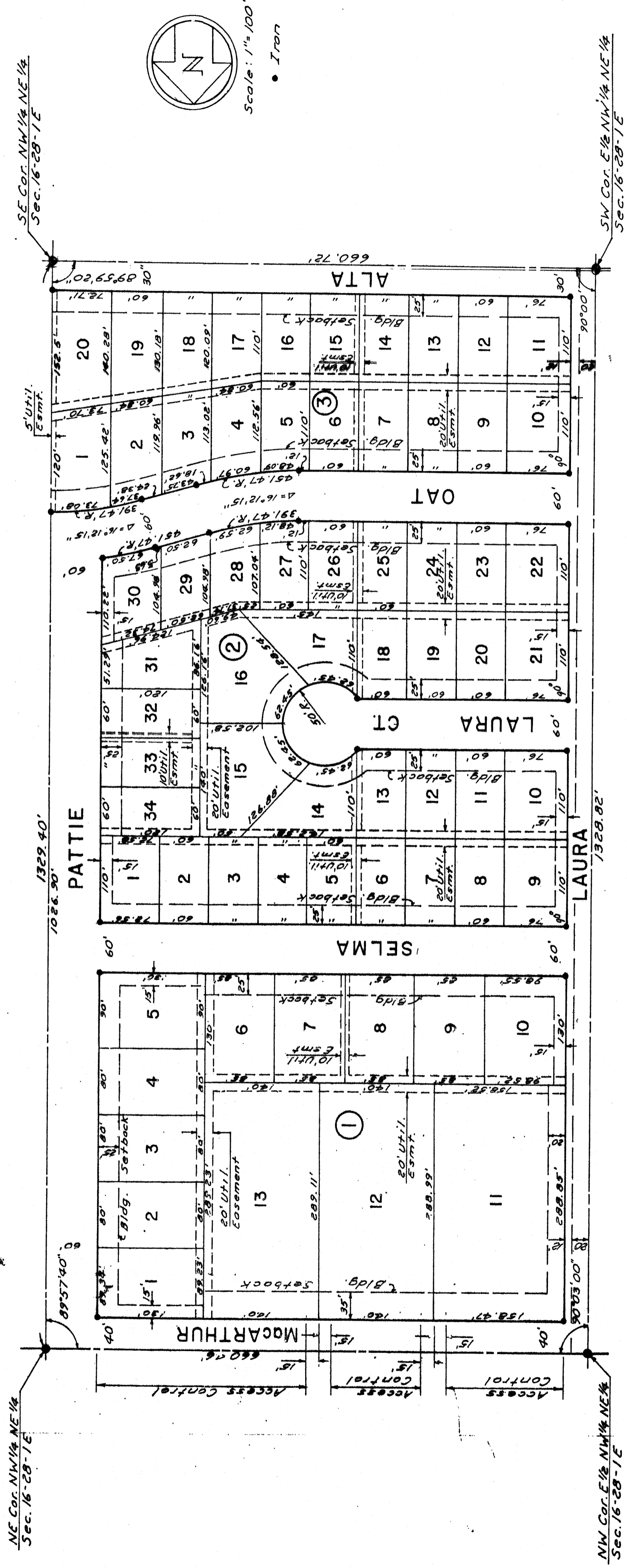


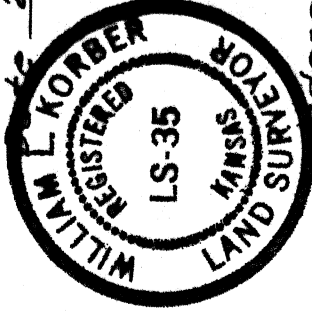
GALYARDT'S 5TH ADDITION

WICHITA, KANSAS

H-1 5-25



State of Kansas } s.s. We, Boughman Company, Surveyors
 Sedgwick County } in aforesaid county and state do hereby certify that
 we have surveyed and platted "GALYARDT'S 5TH ADDITION"
 Wichita, Kansas, and that the accompanying plat is a
 true and correct exhibit of the property surveyed, desc-
 ribed as the E 1/2 of the NW 1/4 of the NE 1/4 of Section 16,
 T28 S. R1 E, Sedgwick County, Kansas, except the west
 20 feet thereof dedicated for street.
 Wm. L. Kopper, Surveyor



This plat of "GALYARDT'S 5TH ADDITION", Wichita,
 Kansas, has been submitted to and approved by the
 Wichita-Sedgwick County Metropolitan Area Planning
 Commission, Wichita, Kansas, dated this 21 day of December
 1976.

Wichita-Sedgwick County Metropolitan Area Planning
 Commission

William L. Kopper Chairman
Robert A. Lakin Secretary

This plat approved and all dedications shown hereon
 accepted by the Board of City Commissioners, Wichita, Kansas,
 this 14th day of February, 1978.

Conrad G. Pate Vice Mayor
Donald C. Gistler City Clerk

This plat approved and all dedications shown hereon
 accepted by the Board of County Commissioners, Sedgwick
 County, Kansas, this 21 day of February, 1978.

William L. Kopper Chairman
Robert A. Lakin Commissioner
Stephen B. Wright County Clerk

#415036

Entered on transfer record this 21 day of Feb. 1978

Stephen B. Wright ASST. County Clerk

State of Kansas } s.s. This is to certify that this plat has
 Sedgwick County } been filed for record in the Office of the Register of
 Deeds this 21th day of FEBRUARY 1978 at 11:30 o'clock
 A. M. and is duly recorded.

Barbara A. McCarty Register of Deeds
Patricia A. ... Deputy



My Commission Expires ... Notary Public

20.00

H-1 5-25