

GENERAL NOTES

- UNDERGROUND UTILITY SERVICE LINES AND OVERHEAD UTILITY POLE LINES ARE TO BE ADJUSTED AS NECESSARY BY OTHERS PRIOR TO CONSTRUCTION UNLESS THE PLANS SPECIFICALLY CALL FOR THEIR ADJUSTMENT BY THE CONTRACTOR. EXISTING UTILITIES AND THEIR LOCATION, AS SHOWN ON THE PLANS, REPRESENT THE BEST INFORMATION OBTAINABLE FOR DESIGN. LOCATION INFORMATION HAS BEEN OBTAINED FROM THE VARIOUS UTILITY COMPANIES AND IS EITHER FROM COMPANY RECORD DRAWINGS OR COMPANY PROVIDED FIELD LOCATIONS. THE CONTRACTOR WILL BE REQUIRED TO WORK AROUND EXISTING UTILITIES WITHIN THE RIGHT-OF-WAY WHICH DO NOT CONFLICT WITH PROPOSED CONSTRUCTION.
- TREES AND SHRUBS IN PUBLIC RIGHT-OF-WAY WHICH ARE IN DIRECT CONFLICT WITH PROPOSED NEW CONSTRUCTION SHALL BE REMOVED BY THE CONTRACTOR, WITH THE ENGINEER'S APPROVAL. TREES AND SHRUBS WHICH ARE NOT IN DIRECT CONFLICT WITH PROPOSED NEW CONSTRUCTION SHALL BE SAVED AND PROTECTED FROM DAMAGE.
- RUBBLE FROM THE REMOVAL OF MISCELLANEOUS STRUCTURES SHALL BE DISPOSED OF ON SITES TO BE PROVIDED BY THE CONTRACTOR AND APPROVED AS NOTED BELOW.

ALL DISPOSAL SITES MUST BE APPROVED BY THE KANSAS DEPARTMENT OF HEALTH AND ENVIRONMENT. MATERIAL EITHER STOCKPILED OR DISPOSED OF IN A FLOOD PLAIN WOULD REQUIRE A KANSAS STATE BOARD OF AGRICULTURE PERMIT. ANY MATERIAL DUMPED IN WATERS OF THE UNITED STATES OR WETLANDS IS SUBJECT TO U.S. CORPS OF ENGINEERS PERMITTING REGULATIONS. ANY MATERIAL BURIED OR STOCKPILED BEYOND APPROVED CONSTRUCTION LIMITS WOULD REQUIRE ADDITIONAL ARCHEOLOGICAL INVESTIGATIONS UNLESS BURIED IN A PREVIOUSLY APPROVED BORROW LOCATION.
- CONTRACTOR SHALL SATISFY HIMSELF OF SURFACE AND SUBSURFACE CONDITIONS PRIOR TO BIDDING.
- TEMPORARY SURFACING MATERIAL (ROCK, ASPHALT, ETC.) MAY HAVE BEEN PLACED WITHIN STREET RIGHTS-OF-WAY FOR HAUL ROADS AND TEMPORARY ACCESS. CONTRACTOR SHALL FIELD VERIFY EXISTING CONDITIONS TO DETERMINE EXTENT, IF ANY, OF SUCH SURFACING. CONTRACTOR SHALL REMOVE SAID TEMPORARY SURFACING IN THE SAME MANNER AS NOTED ABOVE FOR RUBBLE. THIS REMOVAL SHALL BE SUBSIDIARY TO "EXCAVATION".
- CONTRACTOR SHALL PROVIDE A MINIMUM SEVENTY-TWO (72) HOUR ADVANCE NOTICE (EXCLUDING WEEKENDS AND HOLIDAYS) PRIOR TO BEGINNING ANY EXCAVATION, TO KANSAS ONE-CALL SYSTEM, A UTILITY LOCATION SERVICE, AT (316) 687-2470 TO REQUEST THE FOLLOWING UTILITY COMPANIES TO LOCATE ALL EXISTING LINES WITHIN THE PROJECT AREA: AQUILA NETWORK, WESTAR ENERGY, AT&T, COX COMMUNICATIONS, CITY OF WICHITA SEWER MAINTENANCE AND CITY OF WICHITA WATER DEPARTMENT.
- THE CONTRACTOR SHALL BE RESPONSIBLE FOR PRESERVING PROPERTY IRONS. THE CONTRACTOR WILL BE REQUIRED TO RE-ESTABLISH ANY PROPERTY IRONS WHICH ARE DAMAGED OR DESTROYED BY HIS CONSTRUCTION OPERATIONS OR COVERED BY 12" OR MORE OF FILL WITH THIS PROJECT. SUCH IRONS SHALL BE RE-ESTABLISHED BY A LICENSED LAND SURVEYOR IN ACCORDANCE WITH STATE LAWS.
- THE WATER DEPARTMENT SHALL FIELD LOCATE WATER VALVES ONE TIME DURING CONSTRUCTION WHEN REQUESTED BY THE CONTRACTOR. IT SHALL BE THE CONTRACTOR'S RESPONSIBILITY TO PRESERVE SUCH FIELD LOCATIONS DURING THE CONSTRUCTION PROCESS. WATER VALVES, WATER VALVE BOXES OR FIRE HYDRANTS DAMAGED DURING CONSTRUCTION SHALL BE REPAIRED BY THE CONTRACTOR AT HIS OWN EXPENSE.
- THE CONTRACTOR SHALL ADJUST WATER VALVE BOXES AS DIRECTED BY THE ENGINEER. THIS WORK TO BE SUBSIDIARY TO OTHER BID ITEMS.
- INLET HOOKUPS AND INLET PROTECTION SHALL BE BID PER EACH REGARDLESS OF INLET SIZE.
- THIS PROJECT DOES NOT INCLUDE ANY PROVISIONS FOR CONSTRUCTION OF DRIVEWAYS.
- THE CONTRACTOR SHALL APPLY TEMPORARY SEED AND MULCH TO ALL UNPAVED AREAS DISTURBED BY HIS CONSTRUCTION OPERATIONS IN ACCORDANCE WITH THE STANDARD SPECIFICATIONS. SEED SHALL BE ANNUAL RYE APPLIED AT THE RATE OF 4 LBS. PER 1,000 SQUARE FEET. MULCH SHALL BE PRAIRIE HAY APPLIED AT THE RATE OF 15 BALES PER ACRE. THIS WORK SHALL BE PAID FOR AT THE CONTRACT LUMP SUM PRICE BID FOR "TEMPORARY PROJECT SEEDING".

DISTURBED TURF AREAS WITHIN RESERVE "C" SHALL BE RESTORED TO PRE-CONSTRUCTION CONDITION (OR BETTER) IN ACCORDANCE WITH STANDARD CITY OF WICHITA SPECIFICATIONS. THIS WORK SHALL BE A PART OF "SITE PREPARATION AND RESTORATION".

- PRIOR TO CONSTRUCTION, THE CONTRACTOR SHALL RE-ESTABLISH CONTROL POINTS AND BENCH MARKS AND VERIFY THEIR ACCURACY.
- EROSION CONTROL (BMP'S)
THE CONTRACTOR SHALL INSTALL AND/OR MAINTAIN EROSION CONTROL METHODS AS SPECIFIED ON THE EROSION CONTROL PLAN CONTAINED HEREIN. THE FOLLOWING QUANTITIES ARE ESTIMATED, AND SHOULD BE CONSIDERED THE MINIMUM EFFORT REQUIRED. INSTALLATION OF THESE BMP'S DOES NOT RELIEVE THE CONTRACTOR OF THE RESPONSIBILITY OF ABATING SOIL EROSION.

CURB INLET PROTECTION 4 EACH
AREA INLET PROTECTION 5 EACH
CONSTRUCTION ENTRANCE 1 EACH
BACK OF CURB PROTECTION 4,544 L.F.
SILT FENCE BARRIER 3,905 L.F.

BENCHMARK LIST

BM #B-1 - CHISELED "d" ON THE WEST END OF CONCRETE HEADWALL 93 FEET NORTH OF CENTERLINE OF 37TH STREET NORTH AND 139 FEET EAST OF CENTERLINE OF MANCHESTER STREET AT SOUTH END OF POND.
ELEV. = 168.12

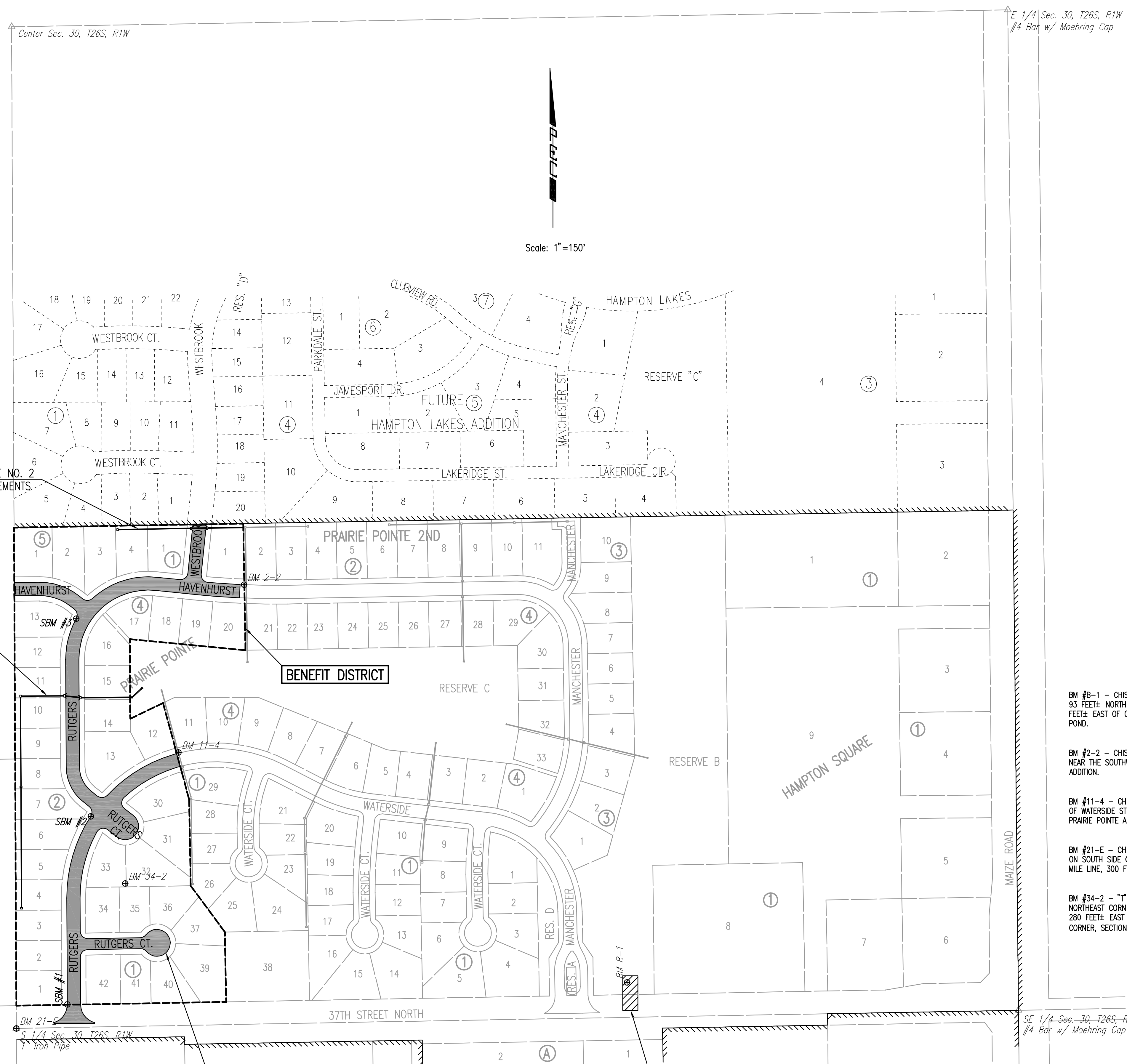
BM #2-2 - CHISELED "d" ON THE NORTH TOP OF HAVENHURST STREET NEAR THE SOUTHWEST CORNER OF LOT 2, BLOCK 2, PRAIRIE POINTE ADDITION.
ELEV. = 176.77

BM #11-4 - CHISELED "d" ON CENTER OF CURB INLET ON NORTH SIDE OF WATERSIDE STREET NEAR SOUTHWEST CORNER OF LOT 11, BLOCK 4, PRAIRIE POINTE ADDITION.
ELEV. = 173.775

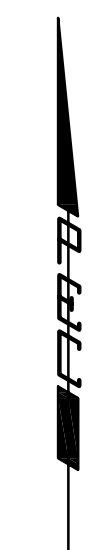
BM #21-E - CHISELED "d" ON CONCRETE BASE OF BRICK FENCE POST ON SOUTH SIDE OF 37TH STREET NORTH, 440 FEET EAST OF ONE HALF MILE LINE, 300 FEET EAST OF RUTGERS STREET.
ELEV. = 169.61

BM #34-2 - "T" POST 4 FEET NORTH OF TELEPHONE PEDESTAL NEAR NORTHEAST CORNER OF LOT 34, BLOCK 2, PRAIRIE POINTE ADDITION, 280 FEET EAST AND 360 FEET NORTH OF THE SOUTH QUARTER CORNER, SECTION 32, T26, R1W. (THIS IS ALSO CONTROL POINT #2230)
ELEV. = 172.455

DEWATERING
CONTRACTOR FOR THIS PROJECT SHALL BE RESPONSIBLE FOR DEWATERING PORTIONS OF EXISTING DETENTION BASIN AS NECESSARY FOR CONSTRUCTION, AS WELL AS CONSTRUCTION OF COFFERDAM(S) WHERE NECESSARY. THIS WORK SHALL BE INCLUDED IN THE PRICE BID FOR "SITE PREPARATION AND RESTORATION".



Scale: 1"=150'



BENCHMARK LIST

BM #B-1 - CHISELED "d" ON THE WEST END OF CONCRETE HEADWALL 93 FEET NORTH OF CENTERLINE OF 37TH STREET NORTH AND 139 FEET EAST OF CENTERLINE OF MANCHESTER STREET AT SOUTH END OF POND.
ELEV. = 168.12

BM #2-2 - CHISELED "d" ON THE NORTH TOP OF HAVENHURST STREET NEAR THE SOUTHWEST CORNER OF LOT 2, BLOCK 2, PRAIRIE POINTE ADDITION.
ELEV. = 176.77

BM #11-4 - CHISELED "d" ON CENTER OF CURB INLET ON NORTH SIDE OF WATERSIDE STREET NEAR SOUTHWEST CORNER OF LOT 11, BLOCK 4, PRAIRIE POINTE ADDITION.
ELEV. = 173.775

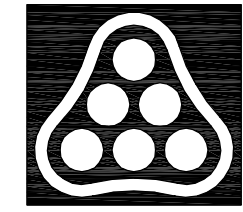
BM #21-E - CHISELED "d" ON CONCRETE BASE OF BRICK FENCE POST ON SOUTH SIDE OF 37TH STREET NORTH, 440 FEET EAST OF ONE HALF MILE LINE, 300 FEET EAST OF RUTGERS STREET.
ELEV. = 169.61

BM #34-2 - "T" POST 4 FEET NORTH OF TELEPHONE PEDESTAL NEAR NORTHEAST CORNER OF LOT 34, BLOCK 2, PRAIRIE POINTE ADDITION, 280 FEET EAST AND 360 FEET NORTH OF THE SOUTH QUARTER CORNER, SECTION 32, T26, R1W. (THIS IS ALSO CONTROL POINT #2230)
ELEV. = 172.455

DEWATERING

CONTRACTOR FOR THIS PROJECT SHALL BE RESPONSIBLE FOR DEWATERING PORTIONS OF EXISTING DETENTION BASIN AS NECESSARY FOR CONSTRUCTION, AS WELL AS CONSTRUCTION OF COFFERDAM(S) WHERE NECESSARY. THIS WORK SHALL BE INCLUDED IN THE PRICE BID FOR "SITE PREPARATION AND RESTORATION".

No.	Revision	By	Date
	PRAIRIE POINTE-PHASE 3		
KEY MAP AND GENERAL NOTES			
JAMES L. ARMOUR, P.E.-CITY ENGINEER CITY OF WICHITA PROJECT NO. 472-84043			
Professional Engineering Consultants, P.A. 303 S. TOPEKA • WICHITA, KANSAS 67202 316-262-2691 • FAX 316-262-3003			
Designed by	BDB, BMM	Job No.	35-06563-000
Drawn by	BJS, TAT	Date	October 2006
			Sheet 2 of 56



Served 05-01-2007 10:27:48 AM by BFEJ
 Plot Scale 1:150 05-02-2007 12:26:52 PM by BFEJ
 J:\SENTOU\2006\06563\2007-05-01 to City Street\DWG\02-KCMAP