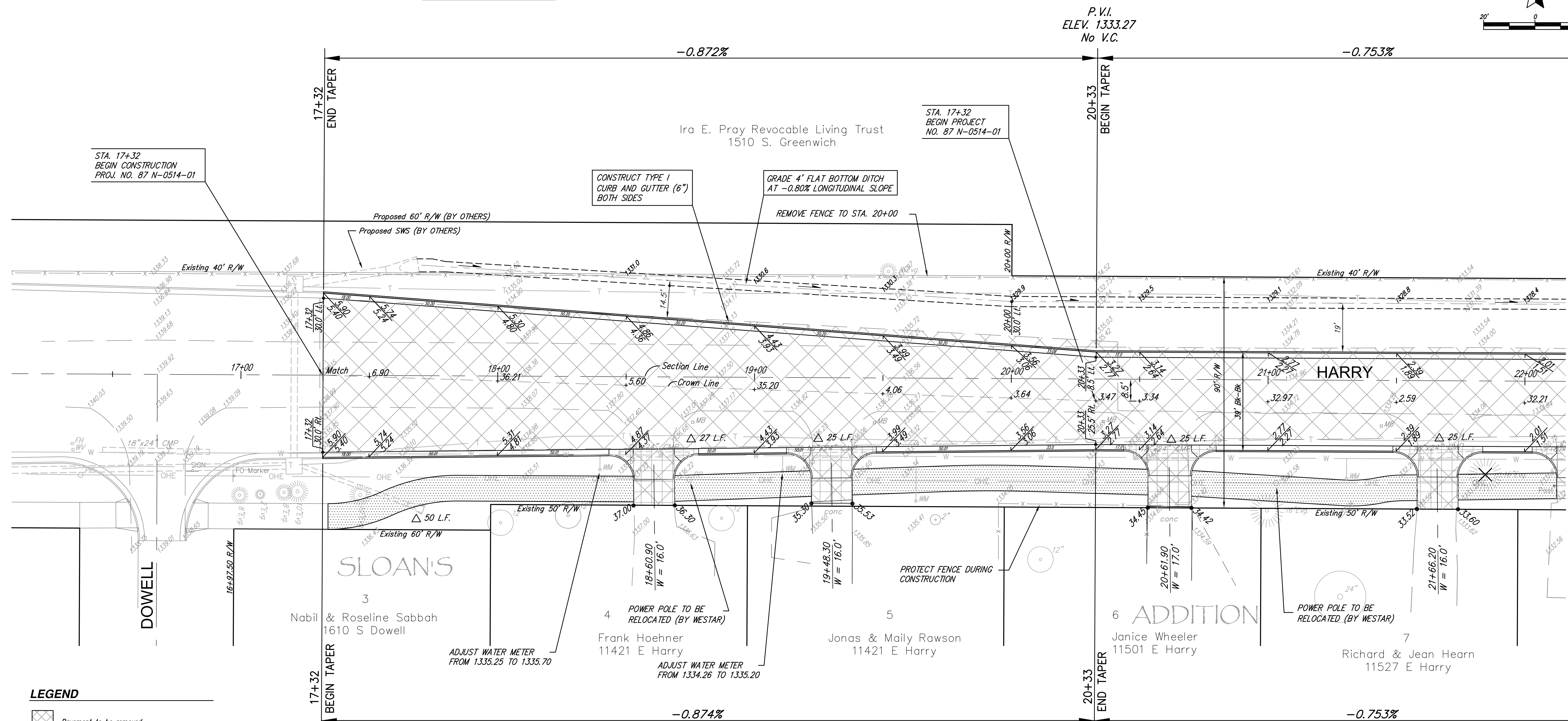
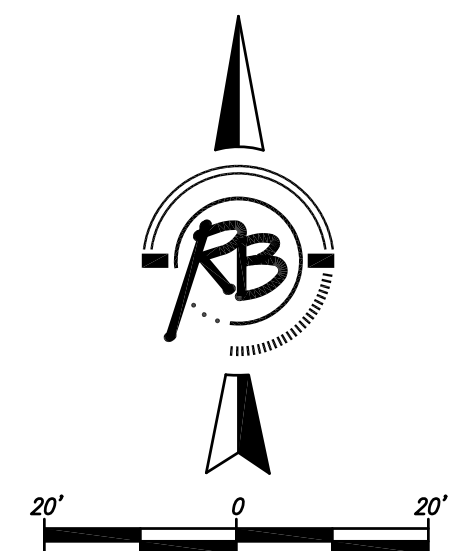


DITCH SECTION



LEGEND

- Pavement to be removed
- Concrete Construction 8" Reinforced
- Multi-Use Path 4" Concrete
- Concrete Pavement (9") (AE) (Reinf.)
- Crushed Stone Subgrade (6") - Geogrid Reinforcement (for base)
- Concrete Driveway Pavement (8") (AE) (Reinf.)
- Brick Paver Surfacing
- 5" Unreinforced Concrete
- 6" Reinforced Rock Base

- Tree to be Removed
- Pipe to be Removed

HARRY STREET - GREENWICH TO 127th ST EAST		HARRY		WICHITA, KANSAS	
		Ruggles & Bohm, P.A. Engineering, Surveying, Land Planning			
924 North Main Wichita, Kansas 67203 www.rbkansas.com		(316) 264-8008 (316) 264-4621 fax E-mail: info@rbkansas.com			
DRAWING FILE ENGINEERING BASE (Harry 1)		PROJECT NUMBER 87 N-0514-01		DATE ..	
DESIGN KWL		DRAWN RA		REVIEW	
UTILITY		DATE		SHEET 6 OF 148	