

GENERAL NOTES

LOADING: HS20-44 A.A.S.H.T.O. Specification, 1983 Edition.

UNIT STRESSES:
 Concrete $F'_c = 4,000$ p.s.i.
 Reinforcing Steel $F_y = 60,000$ p.s.i.

CONSTRUCTION: The Contractor Must use cast-in-place.

JOINTS: Construction Joints shall only be formed at locations shown or as approved by the Engineer

EXCAVATION: All excavation and backfill shall extend 2 feet beyond the sides of the box and wingwall.

CONFLICT: If R.F.B. plan notes conflict with the General Notes from this sheet, then these General Notes will govern.

PAYMENT: The R.F. Box shall be bid as a Lump Sum and shall include all labor, material, excavation, concrete, reinforcing steel, seal course and other incidentals necessary to complete the work. Quantities shown are for information only.

REINFORCING: All reinforcing shall conform to ASTM A615, Grade 60. All dimensions relative to reinforcing steel shall be to centerline of bar unless otherwise noted. The concrete cover for all reinforcing shall be a minimum of 1 1/2" unless otherwise noted.

STRIKE LINE: Wingwalls and that portion of the RFB outside the Strike Line shall be constructed level. Footing for wingwalls shall be constructed with the culvert floor. See wingwall detail sheet.

CONCRETE: Shall be air-entrained and have a minimum 28 day compressive strength of 4,000 p.s.i. Bevel all exposed edges with a 3/4 inch triangular moulding.

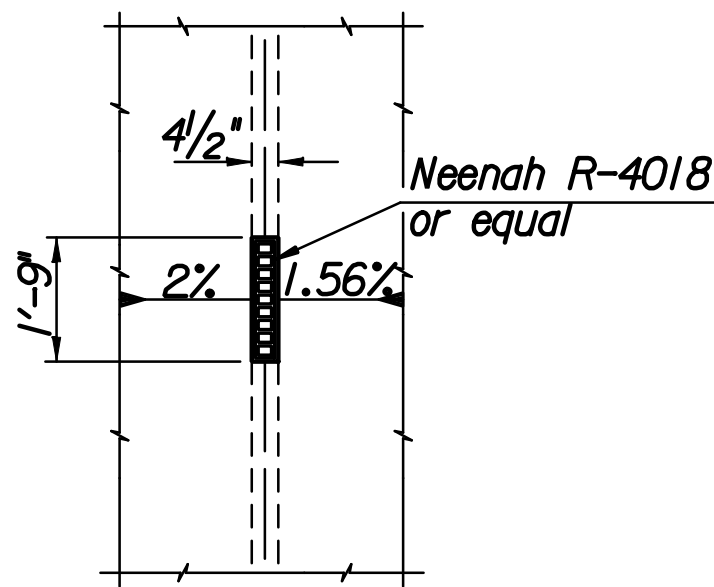
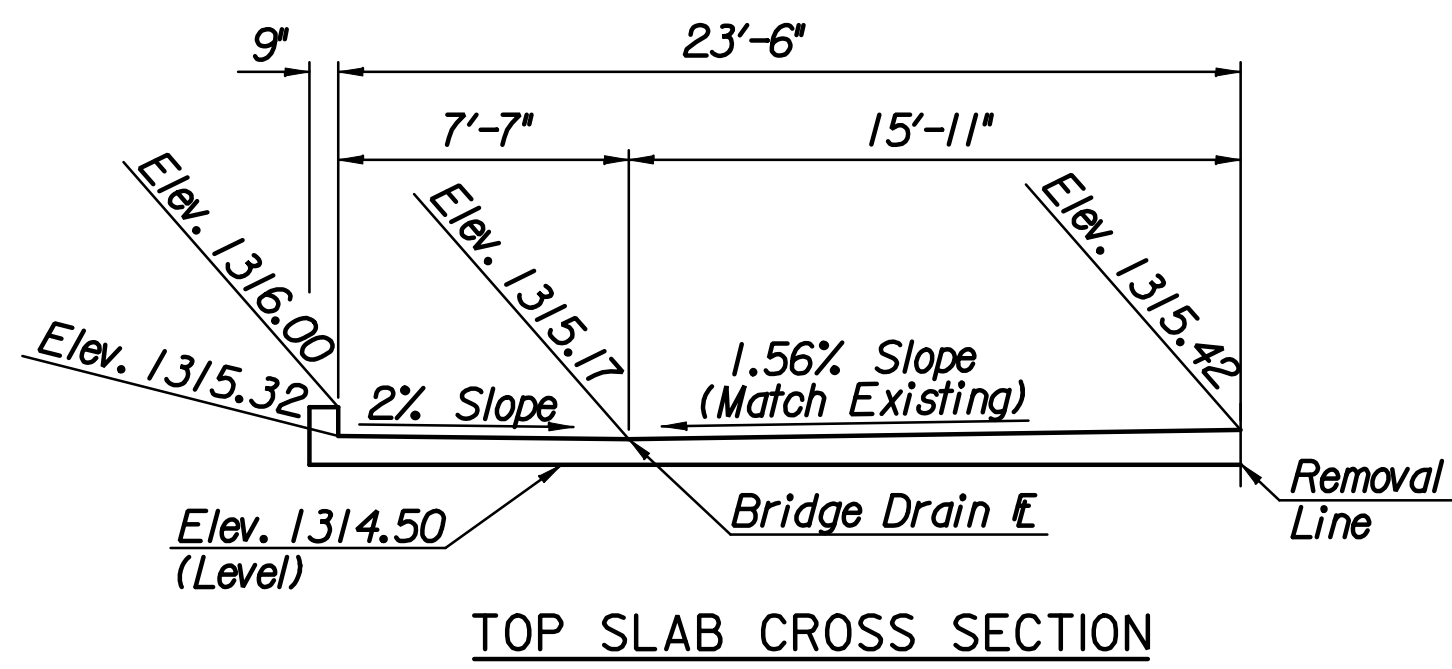
EXISTING DIMENSION VERIFICATION: Dimensions of the existing structure are based on old plans. Verify, by field measurement, the as-built dimensions of the existing structure.

REMOVAL OF EXISTING STRUCTURE: Existing longitudinal reinforcing steel shall remain in place unless it is sufficiently deteriorated. Any reinforcing steel cut or damaged by the Contractor during concrete removal shall be replaced at no additional cost to the Owner. Where non-coated bars come in contact with epoxy coated bars, they need not be coated. All materials removed from the existing structure shall become the property of the Contractor. Remove this material from the site.

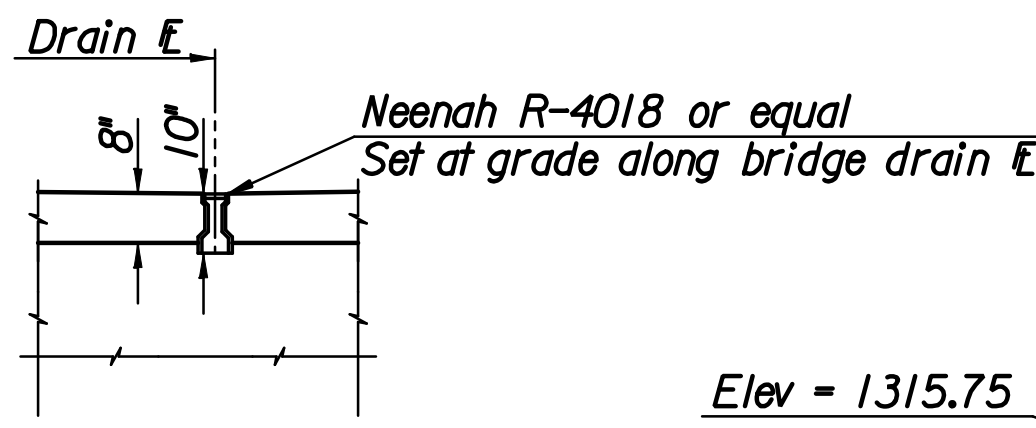
CORRAL RAIL: Build the Corral Rail after the falsework is struck.

DRILLING AND GROUTING: This item shall consist of grouting reinforcing steel, anchor bolts, tie bars, or dowel bars into the existing concrete, where required by the Engineer, with an epoxy grout. Follow KDOT Specifications 842 and any associated Special Provisions. Follow the manufacturer's directions for mixing, application and curing. The tools, materials, reinforcing steel, labor and incidentals necessary to complete the work shall be paid for per each by the bid item "Drilling and Grouting." All horizontal bars in the interior walls and floor of box must be drilled and grouted. All horizontal bars in the exterior walls and slab of box will be lapped onto existing steel exposed during removal.

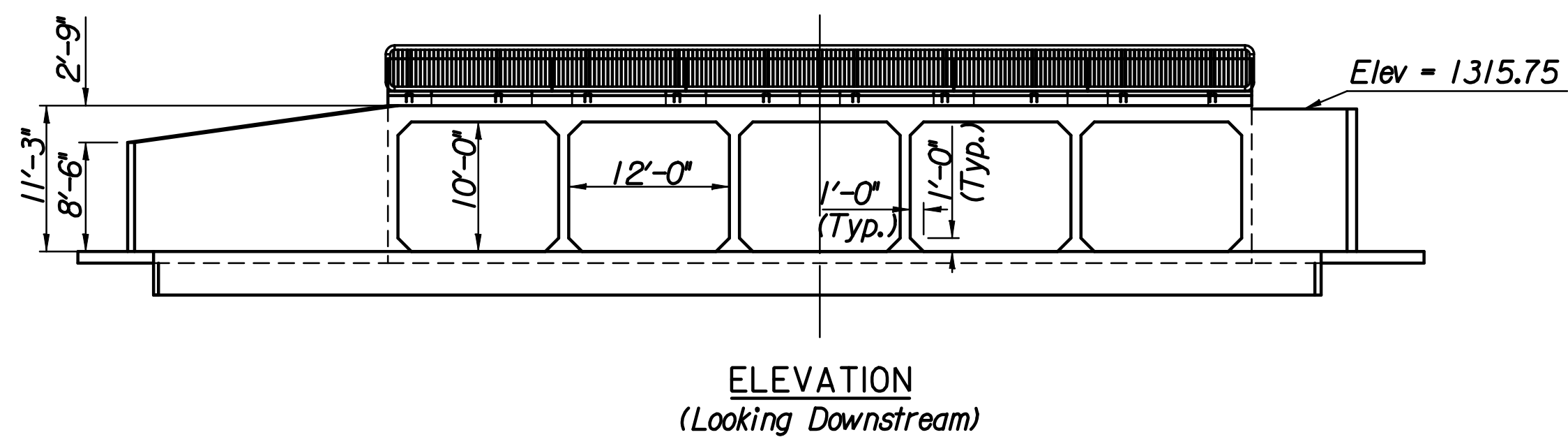
SUMMARY OF QUANTITIES		
ITEM	QUANTITY	UNIT
Removal of Existing Structure	1	L.S.
Concrete (Grade 4.0)(AE)	404.9	C.Y.
Concrete (Grade 4.0)	75.7	C.Y.
Reinforcing Steel (Grade 60)(Epoxy)	72,234	Lbs.
Reinforcing Steel (Grade 60)	1,682	Lbs.
Class III Excavation	82	C.Y.
Foundation Stabilization	78	C.Y.
Concrete for Seal Course (Set)	1	C.Y.
Granular Backfill (Wingwalls)(Set)	1	C.Y.
Bridge Drains	20	Each
Bridge Plaque	2	Each
Concrete Safety Barrier (Transition)	134.3	L.F.
Drilling and Grouting	280	Each



BRIDGE DRAIN PLAN
 Depicting slope fold lines

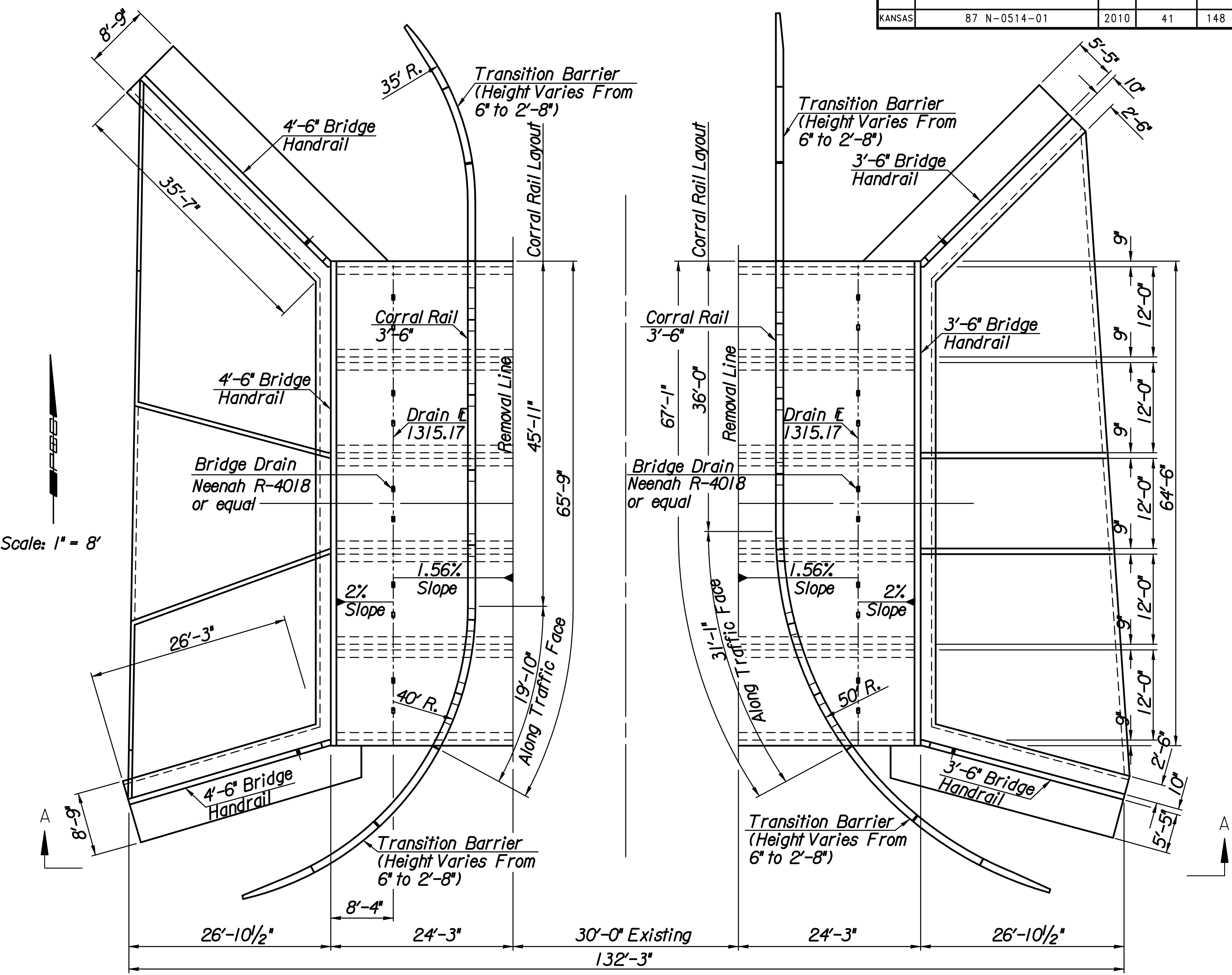


BRIDGE DRAIN ELEVATION
 Drain directly into box, Protrude as necessary.

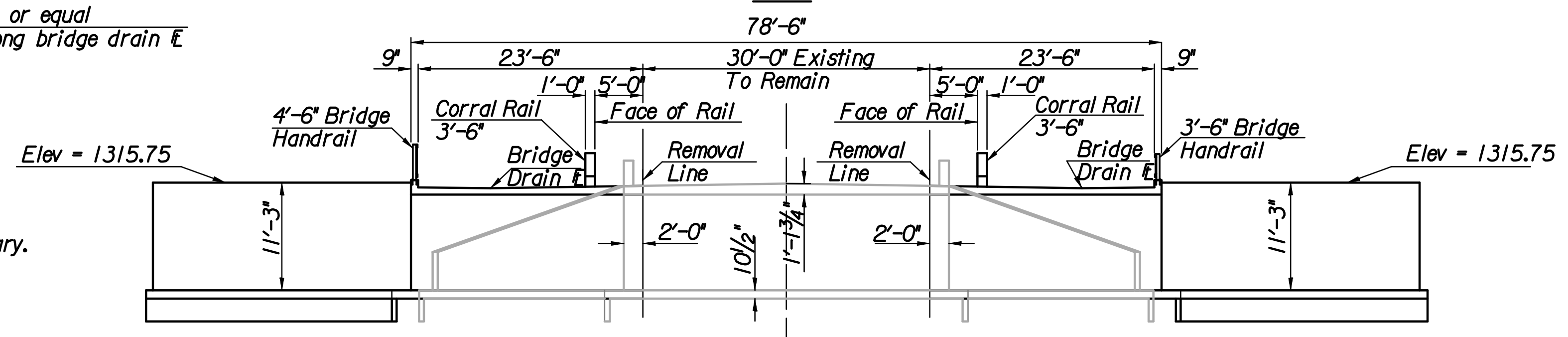


ELEVATION
 (Looking Downstream)

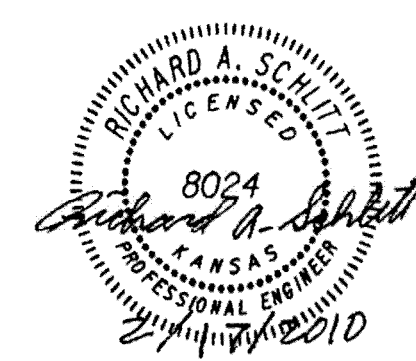
Scale: 1" = 8'



PLAN



SECTION VIEW A-A
 Existing transverse slab reinforcing to be preserved (Lap to S4, S5 & F4 Bars)



No.	Revisions	By	Date
CITY OF WICHITA 127TH ST. STA. 5+86.19 5-12'x10' RFB GENERAL NOTES, QUANTITIES AND LAYOUT 127th and Harry St. PROJECT NO. 87 N-0514-01 SEDGWICK COUNTY			
Professional Engineering Consultants, P.A. 303 S. TOPEKA • WICHITA, KANSAS 67202 316-262-2691 • FAX 316-262-3003			
Designed by	R.J.M.	Checked by	R.A.S.
Drawn by	R.J.M.	Date	Feb. 2010
		Job No.	08778
		Sh. No.	41

Plotted By: rjm
 File: i:\2008\08778\Office Check\08778-041-RCB-DETAILS-5x12.dgn