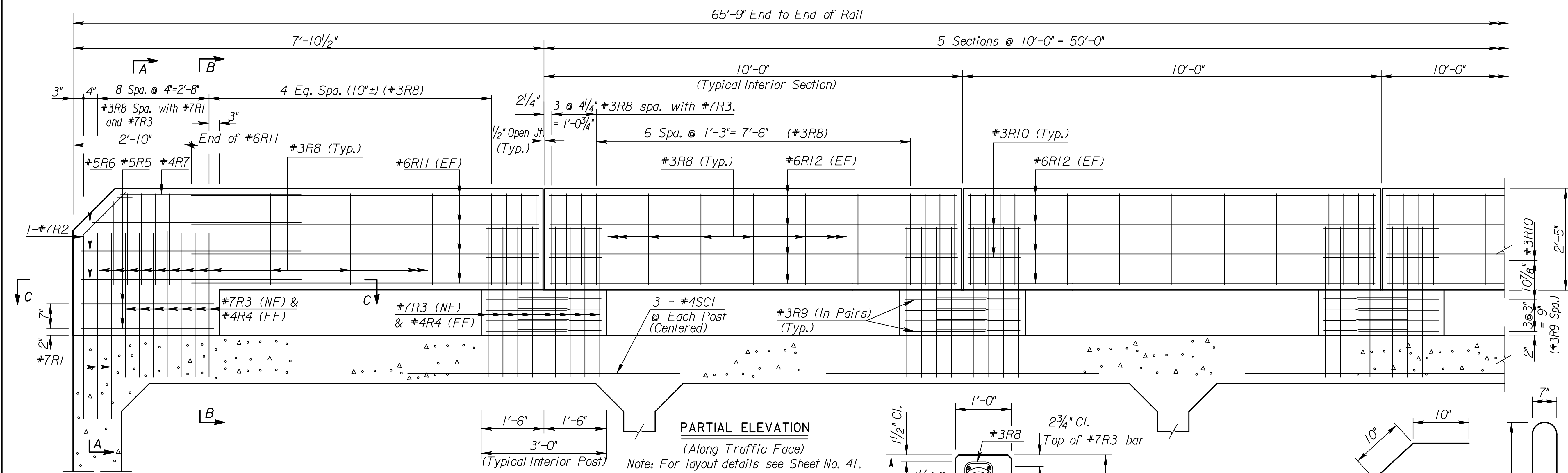


STATE	PROJECT NO.	YEAR	SHEET NO.	TOTAL SHEETS
KANSAS	87 N-0514-01	2010	51	148



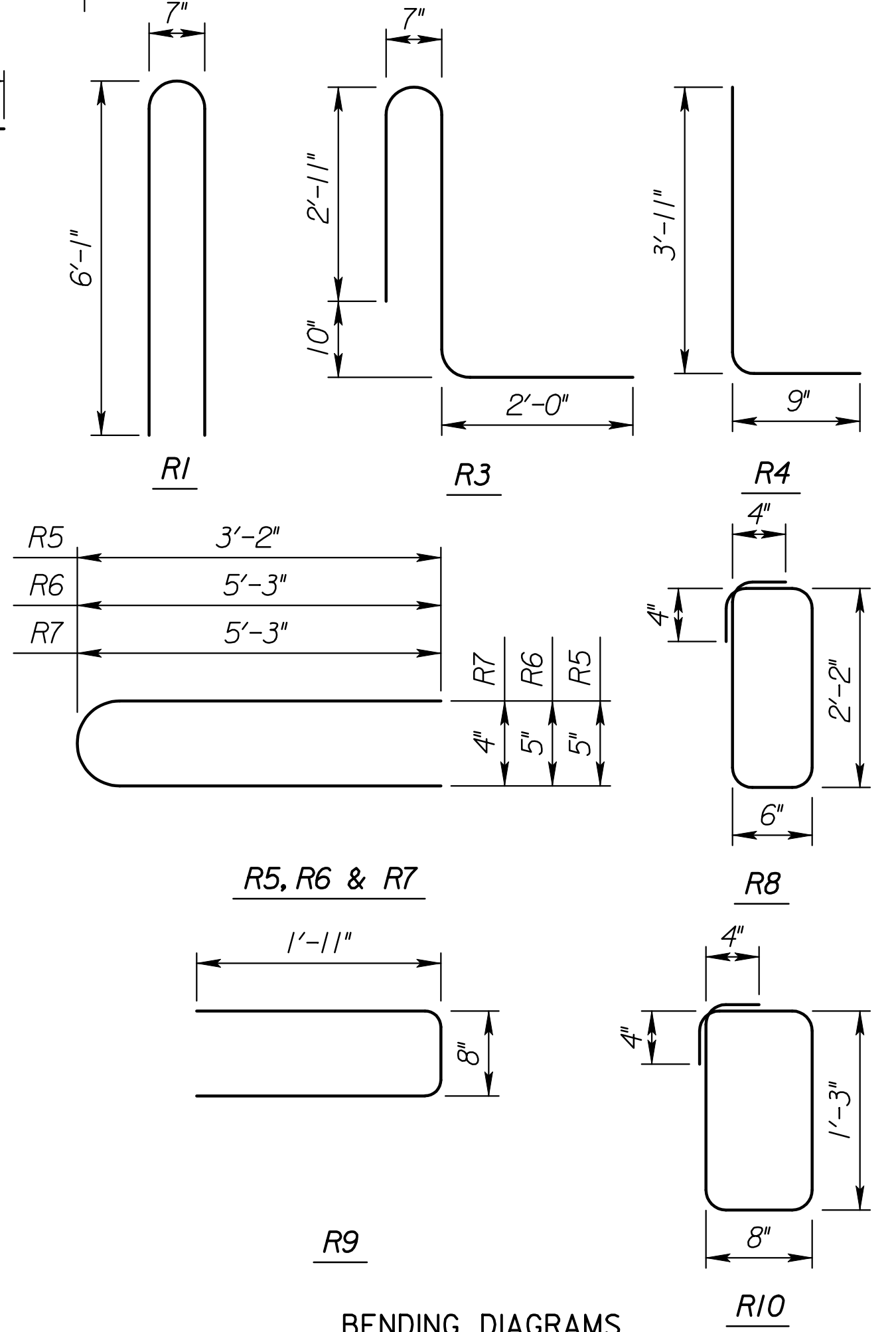
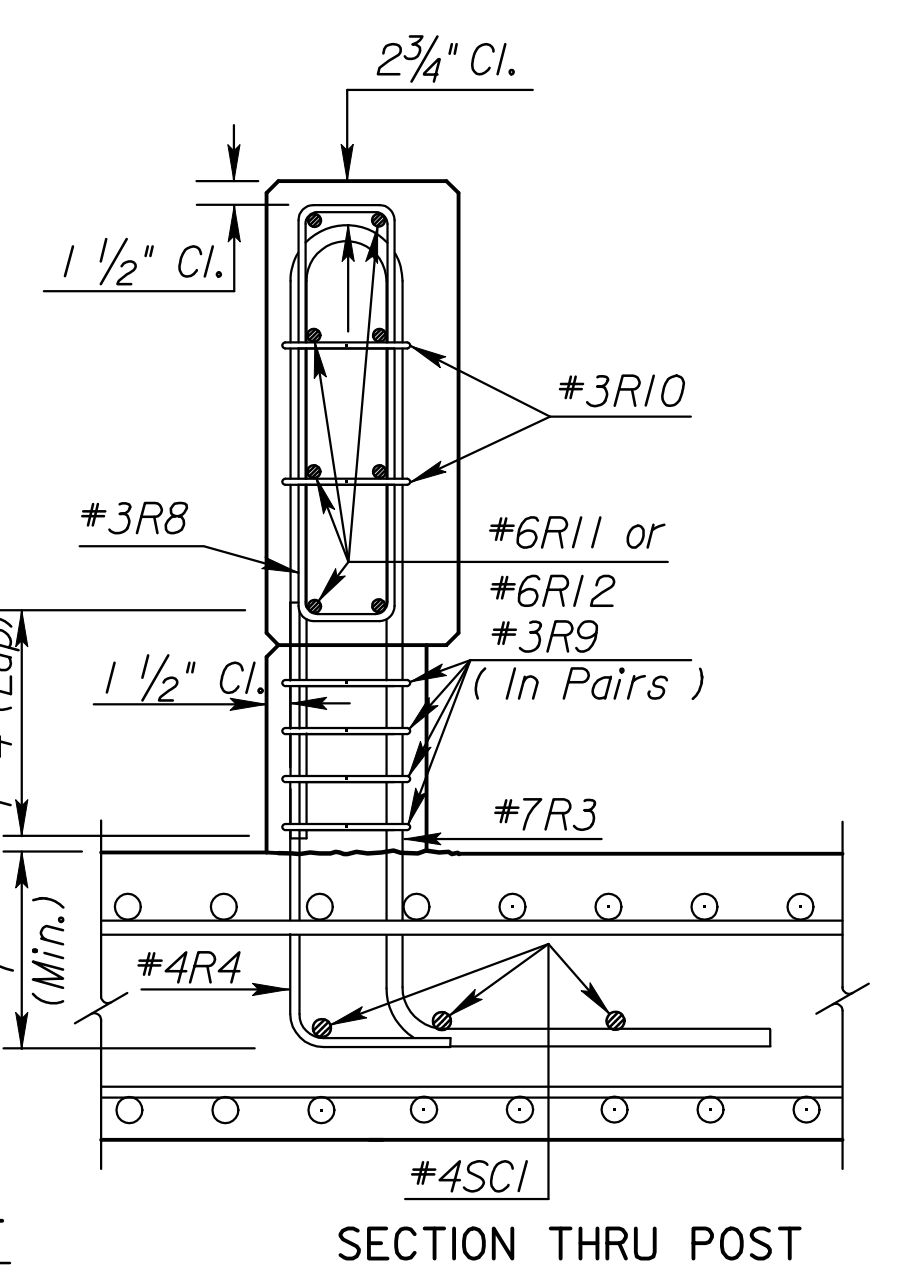
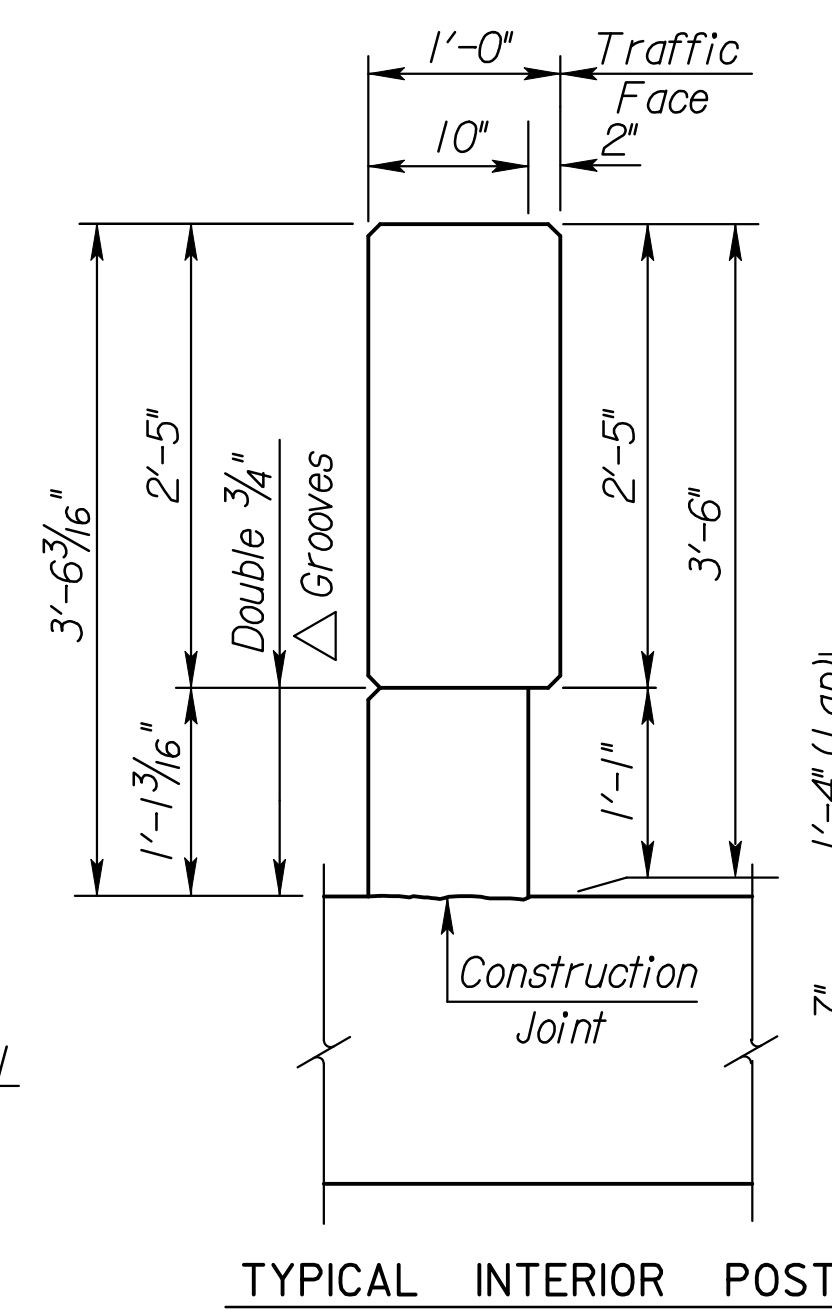
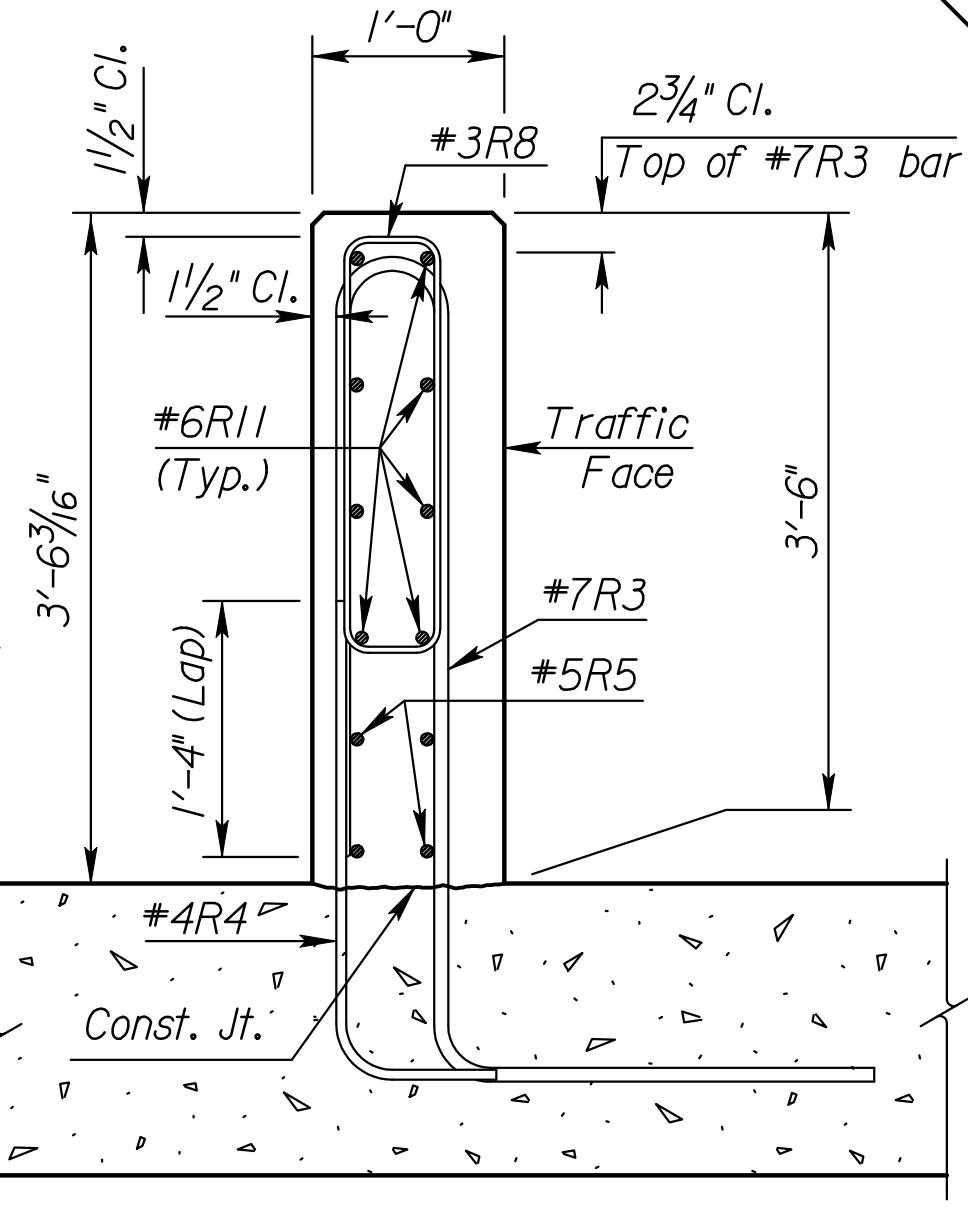
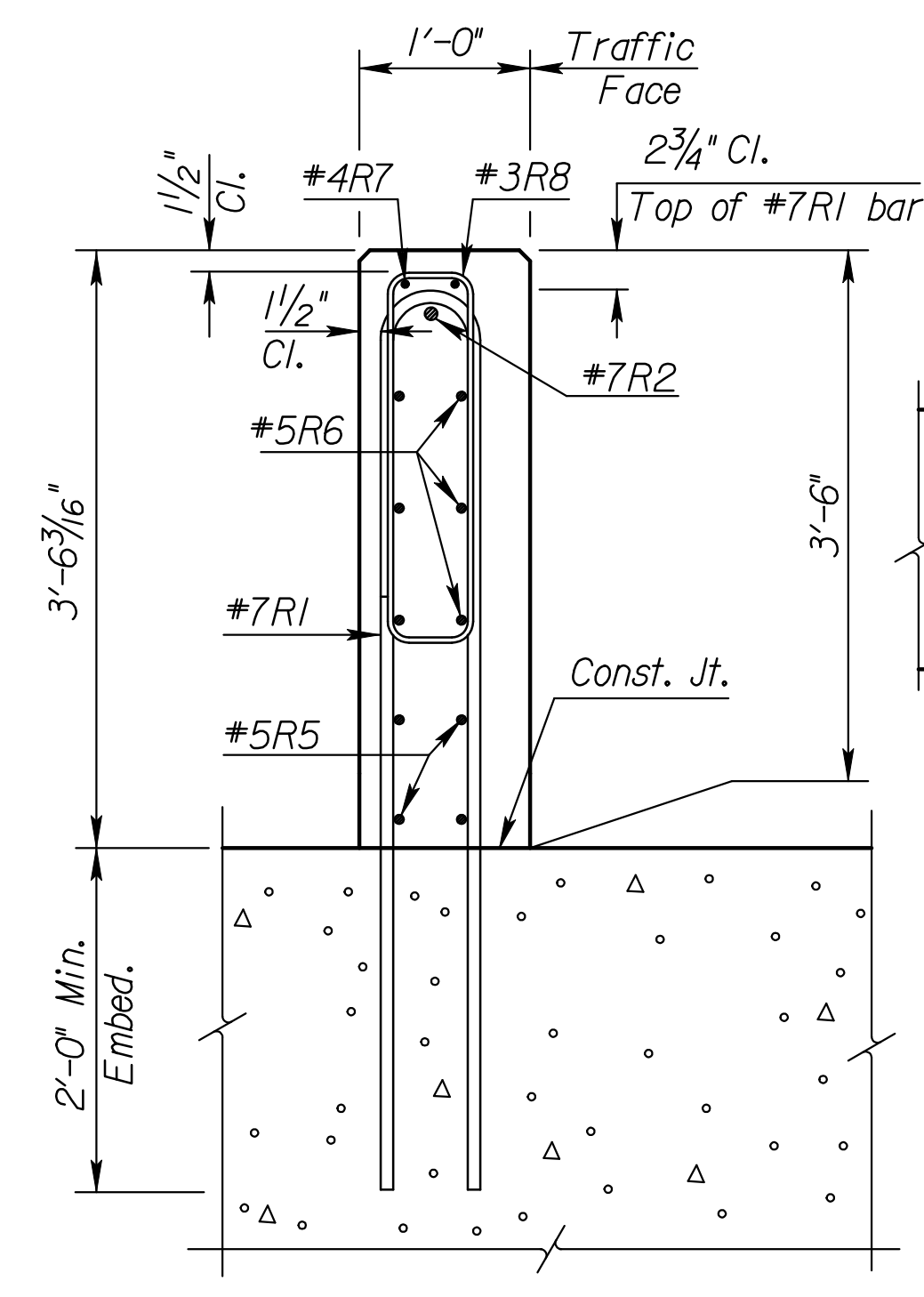
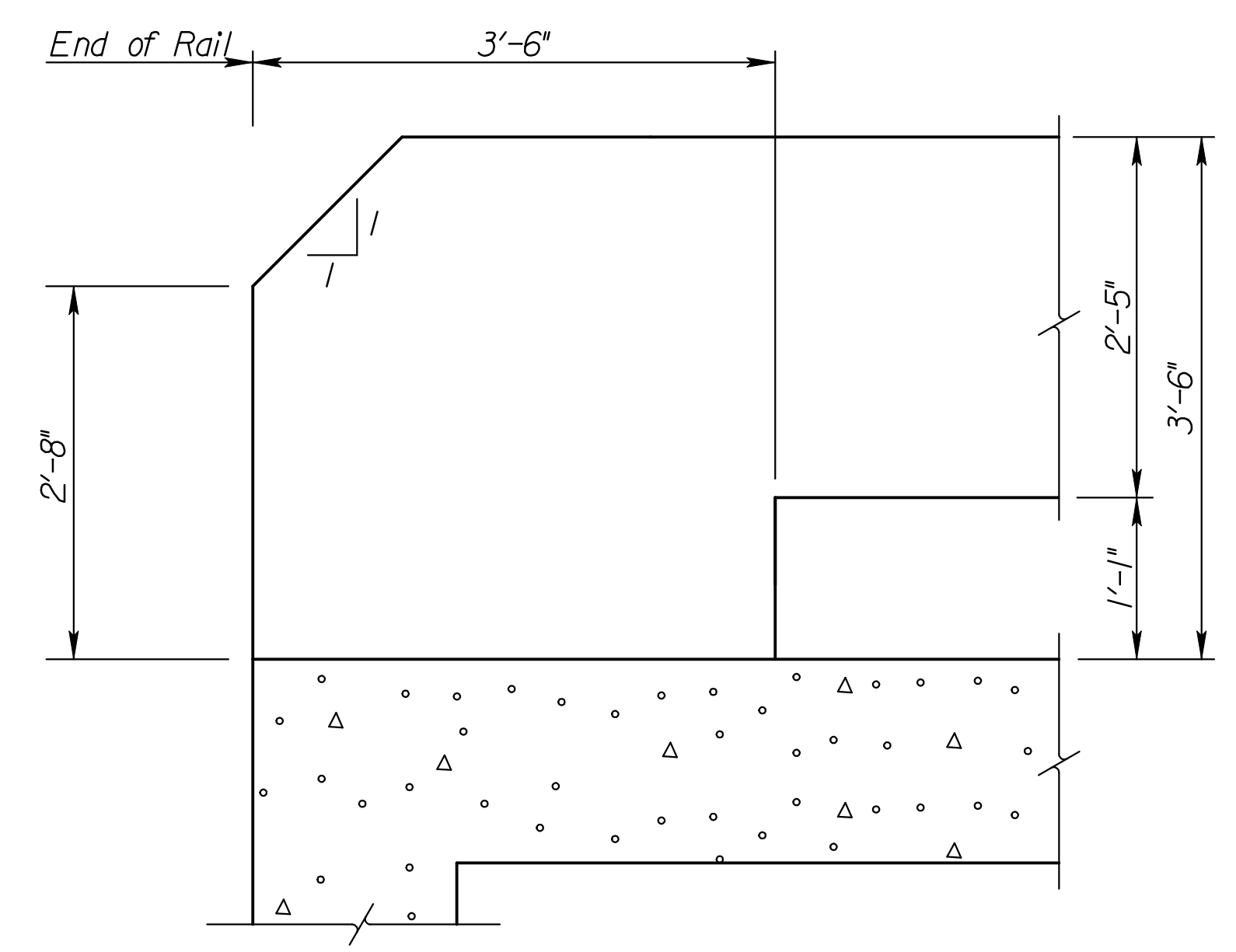
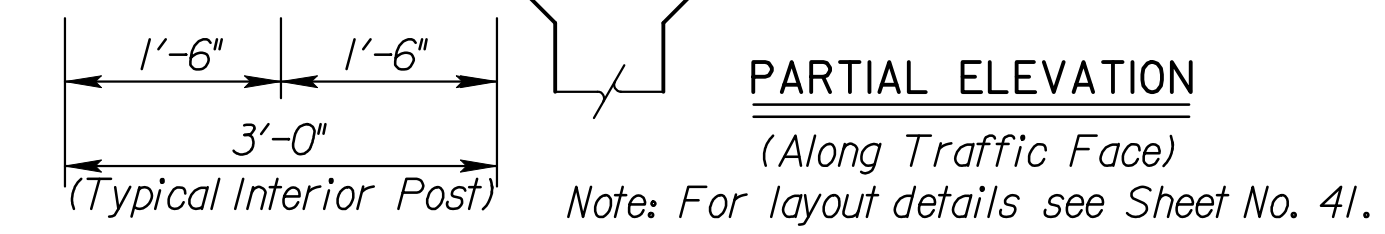
**BILL OF MATERIALS (WEST SIDE)**

REINFORCING STEEL							
Mark	No.	Size	Length	Mark	No.	Size	Length
R1	4	#7	12'-9"	R7	2	#4	10'-8"
R2	2	#7	6'-2"	R8	97	#3	6'-0"
R3	62	#7	10'-2"	R9	48	#3	4'-6"
R4	62	#4	4'-8"	R10	24	#3	4'-6"
R5	4	#5	6'-6"	R11	16	#6	5'-0"
R6	6	#5	10'-8"	R12	40	#6	9'-8"
SCI	18	#4	5'-6"				

* SUMMARY OF QUANTITIES		
Item	Quantity	Unit
Concrete (Grade 4.0)(AE)	6.8	C.Y.
Reinforcing Steel (Gr. 60) (Epoxy)	2827	Lbs.

\* For Information Only (Total - 1 End)  
Quantities are listed on RFB Detail sheet.



**BENDING DIAGRAMS**  
(All dimensions are out to out of bars.)

3					
2					
1					
NO.	DATE	REVISIONS	BY	APP'D	

**KANSAS DEPARTMENT OF TRANSPORTATION**  
127TH ST. STA. 5+86.19  
42" KANSAS CORRAL RAIL (WEST)  
R C B SLAB (Without Curb)

Proj. No. 472-84696 Sedgwick Co.

SHEET NO.	OF	SCALE	APP'D
DESIGNED	DETAILED	QUANTITIES	CADD
DESIGN CK.	DETAIL CK.	QUAN. CK.	CADD CK.



Std. Base File: br182a.dgn  
 Plotted By: rjm  
 File: I:\2008\0878\Office Check\0878-051-CorralRail\_West.dgn  
 Plot Date: 2/17/2010