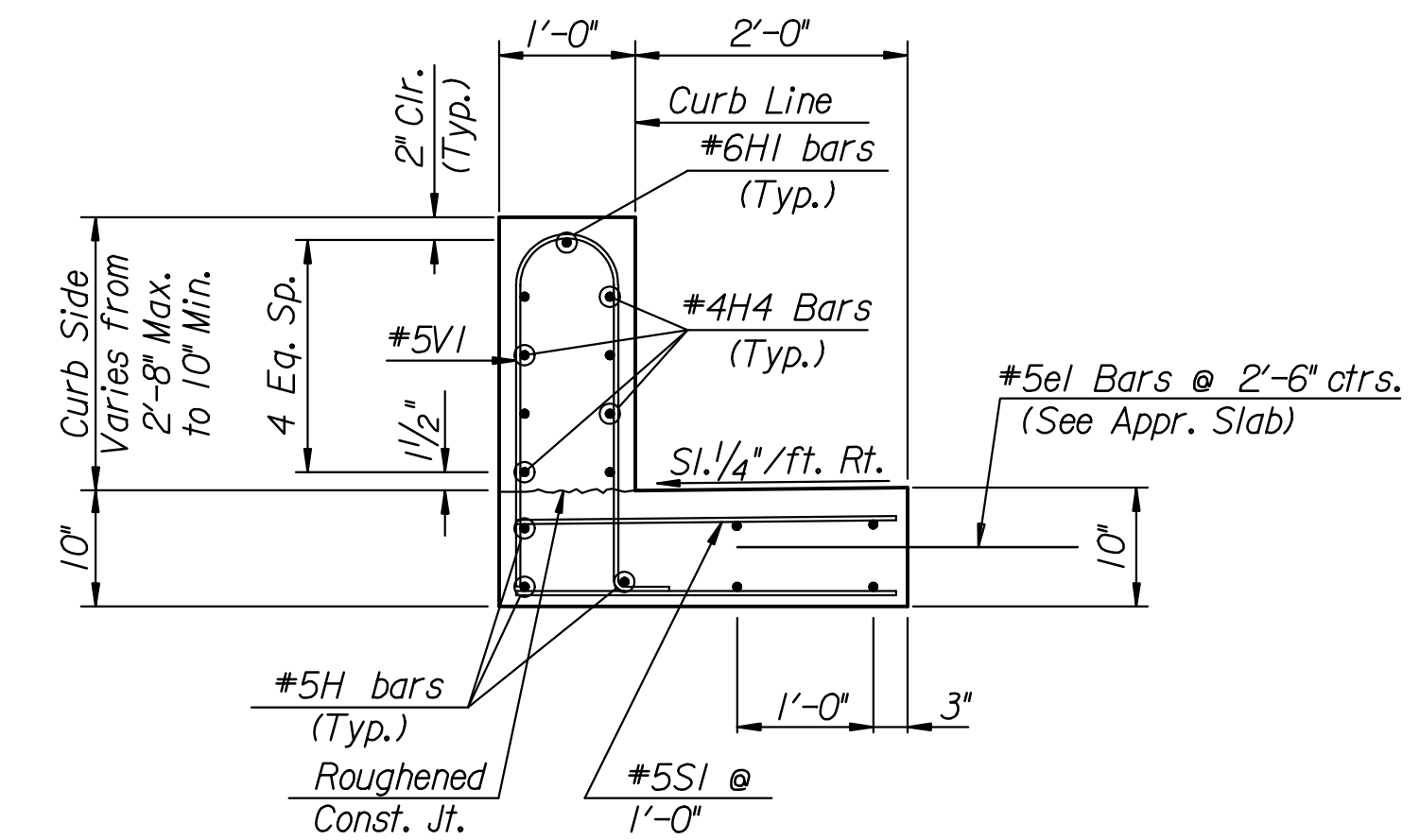
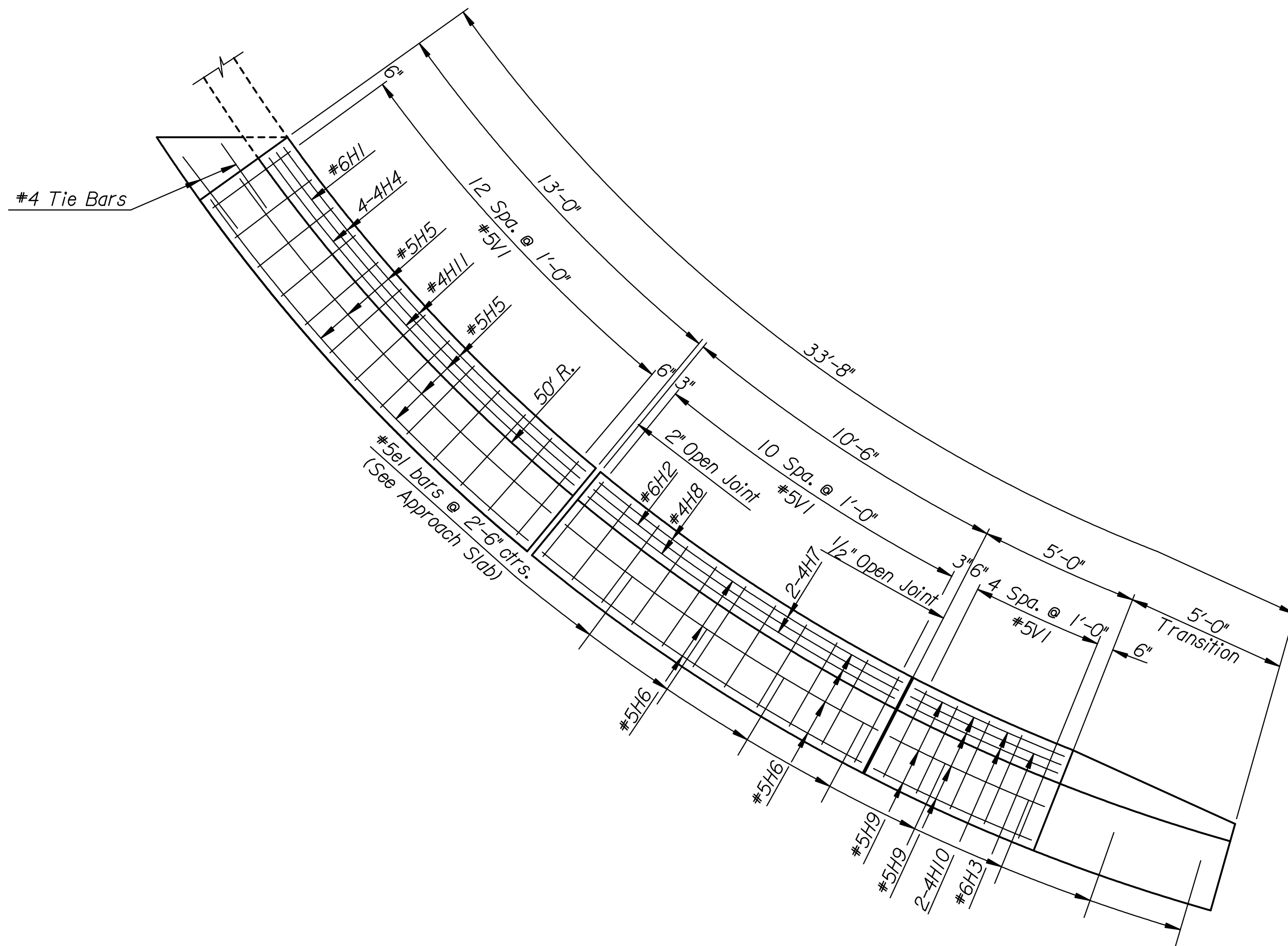


ELEVATION

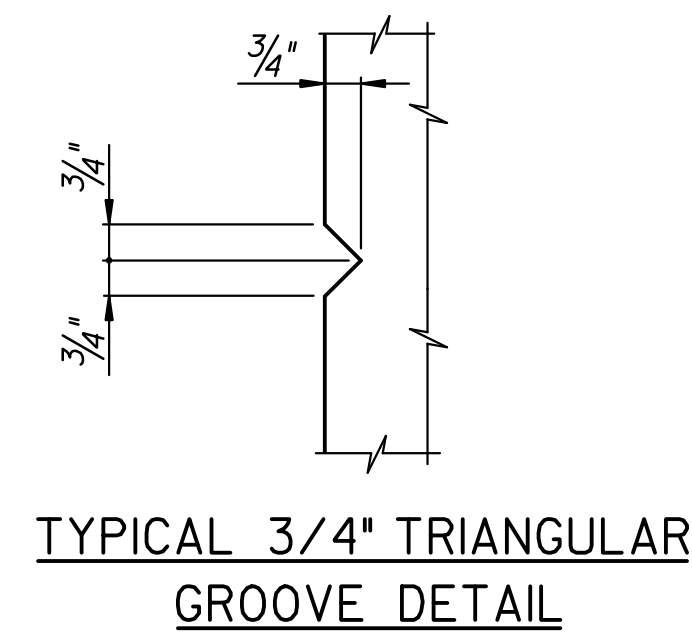


SECTION A-A
(TRANSITION THRU SAFETY BARRIER)

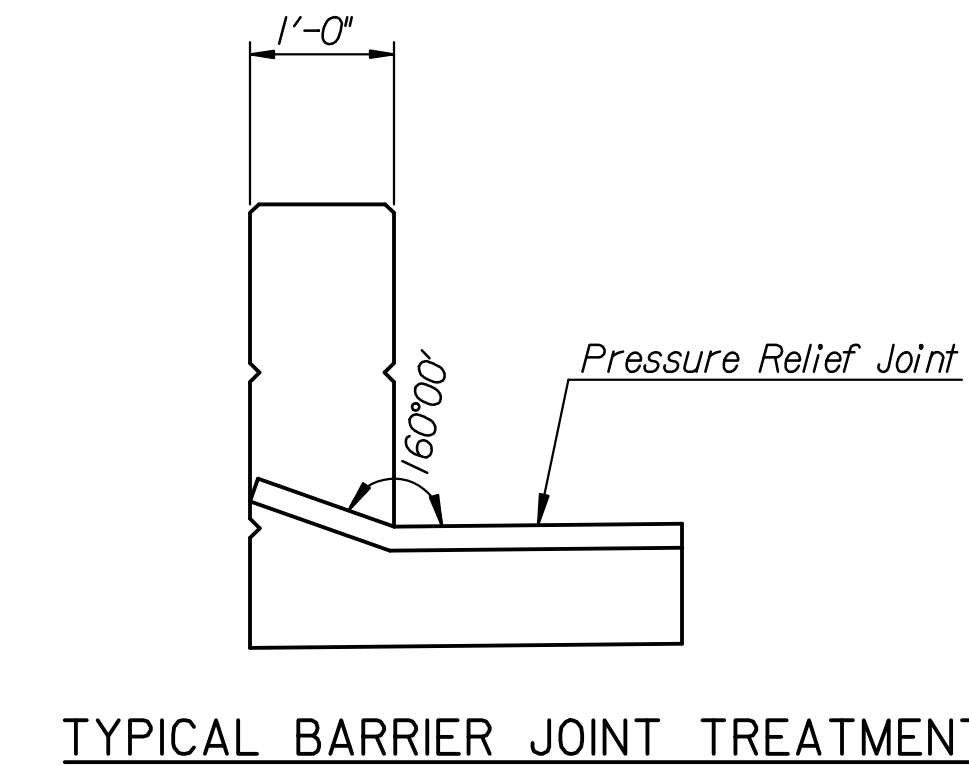
Adjust F.L. & crossslope in first 5' to meet Combined Curb & Gutter (Type I) or (Type I) (Special)



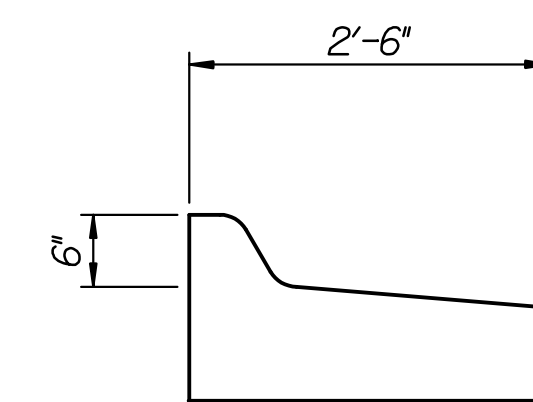
PLAN
Dim. Along Curb Line.



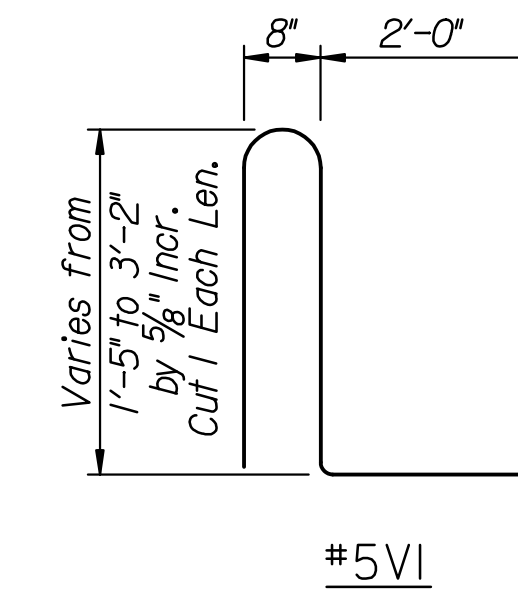
TYPICAL 3/4" TRIANGULAR GROOVE DETAIL



TYPICAL BARRIER JOINT TREATMENT



SECTION B-B
Left (Type I) (Special)



#5V1
BENDING DIAGRAM
Dimensions are out to out of bars

BILL OF MATERIALS (ONE END)							
REINFORCING STEEL							
Mark	No.	Size	Length	Mark	No.	Size	Length
H1	1	6	12'-8"	H6	7	5	10'-2"
H2	1	6	10'-2"	H7	4	4	10'-2"
H3	1	6	4'-8"	H8	2	4	9'-5"
H4	8	4	12'-8"	H9	7	5	4'-8"
H5	7	5	12'-8"	H10	4	4	4'-8"
H11	2	4	8'-5"				
SI	29	5	2'-8"				
V1	29	5	Varies				
V2	3	8	1'-0"				

* SUMMARY OF QUANTITIES		
Item	Quantity	Unit
Concrete (Grade 4.0)(AE)	5.1	C.Y.
Reinforcing Steel (Gr. 60) (Epoxy)	682	Lbs.

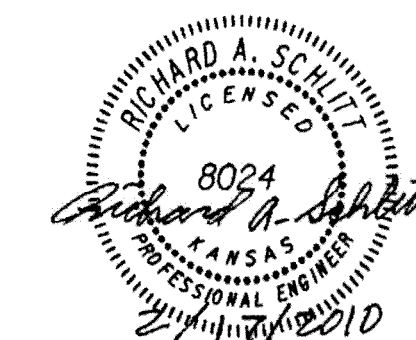
* For Information Only
Quantities are listed on RFB General Notes, Quantities and Layout sheet.

CONCRETE SAFETY BARRIER (TRANSITION) NOTES

The "Concrete Safety Barrier (Transition)" shall be constructed of Concrete (Grade 4.0)(AE) and A-615 Grade 60 reinforcing steel.

The 2'-8" sections of the barrier shall be grooved with a 3/4" chamfer strip on all exposed edges.

The bid item "Concrete Safety Barrier (Transition)" measured per lineal foot as per plan, shall be full compensation for furnishing all materials, equipment and labor necessary.



No.	Revisions	By	Date

CITY OF WICHITA
127TH ST. STA. 5+86.19
CONCRETE SAFETY BARRIER (TRANSITION) (SE)
127th and Harry St.
PROJECT NO. 87 N-0514-01 SEDGWICK COUNTY

Professional Engineering Consultants, P.A.
303 S. TOPEKA • WICHITA, KANSAS 67202
316-262-2691 • FAX 316-262-3003

Designed by	R.J.M	Checked by	R.A.S.
Drawn by	R.J.M	Date	Feb. 2010
		Job No.	08778