

STATE	PROJECT NO.	YEAR	SHEET NO.	TOTAL SHEETS
KANSAS	87 N-0514-01	2010	60	148

**GENERAL NOTES**

**UNIT STRESSES:** Grade 4.0 Concrete;  $f'c = 4,000$  p.s.i.  
Reinforcing Steel;  $f_y = 60,000$  p.s.i.

**CONCRETE:** Grade 4.0 Concrete shall be used throughout. Bevel all exposed edges with a  $\frac{3}{4}$  inch triangular moulding.

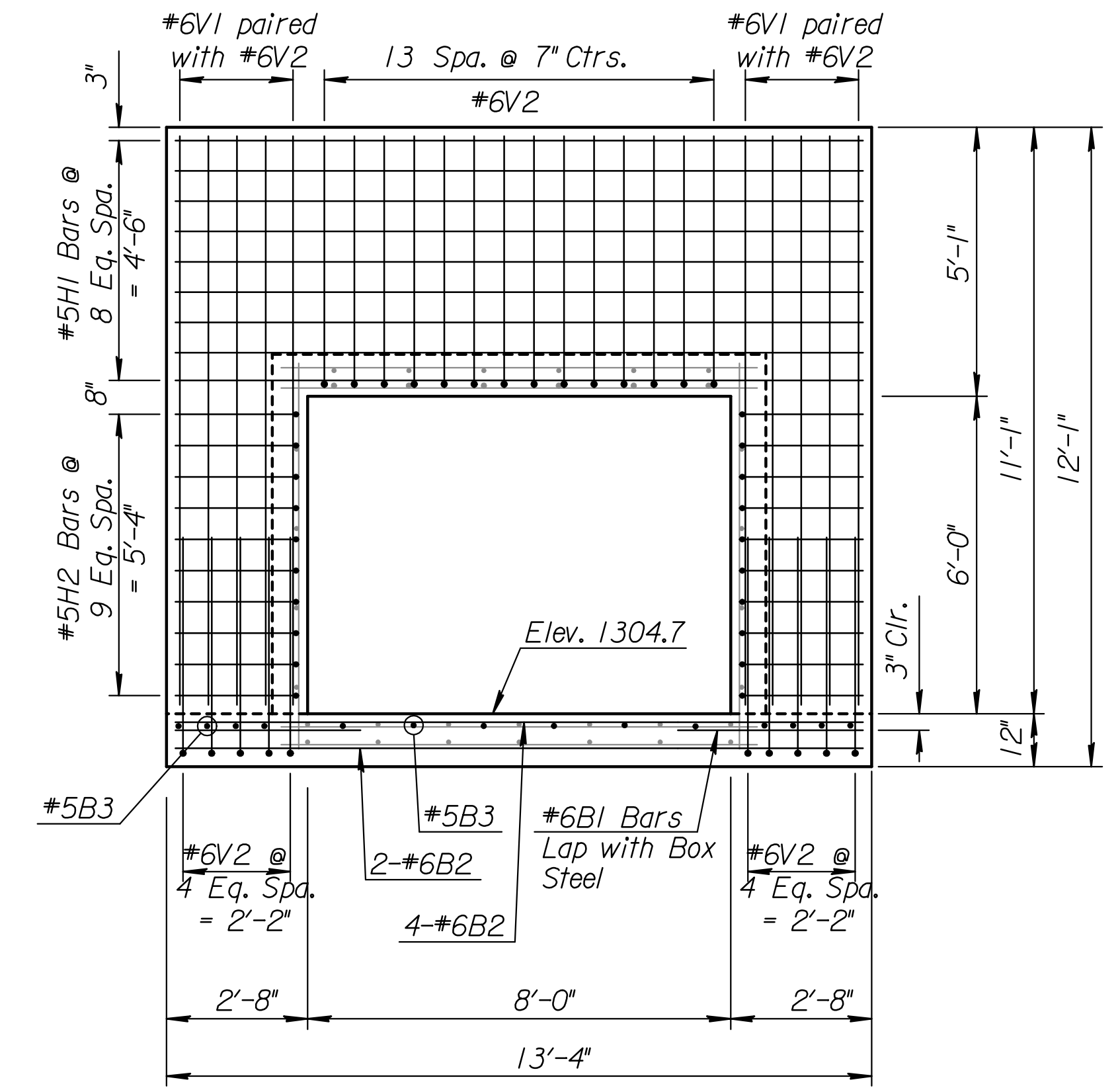
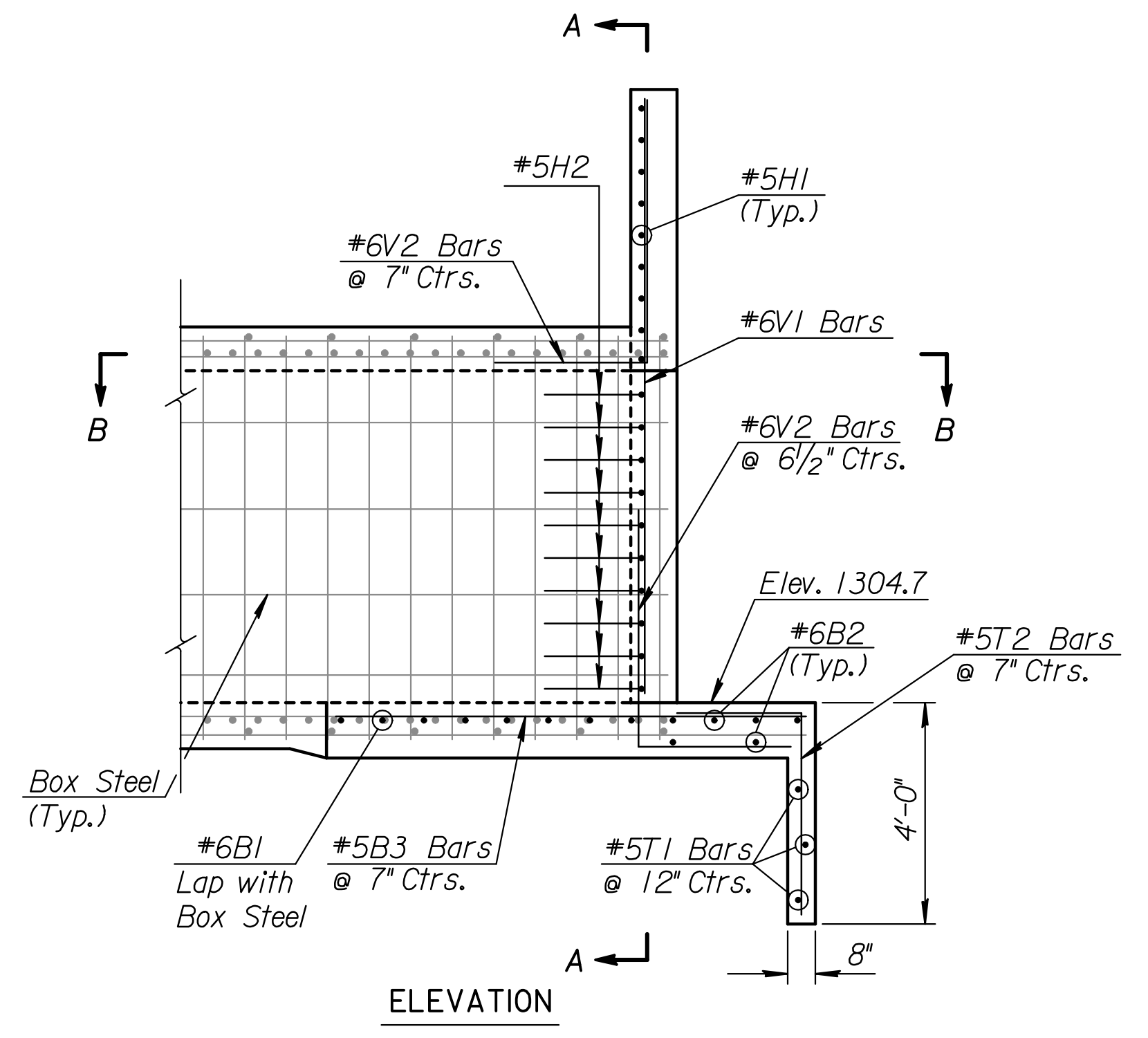
**REINFORCING:** All reinforcing shall conform to ASTM A615, Grade 60. Welded wire fabric shall conform to ASTM A185. Wire fabric shall be electrically welded and shall be composed of 6x6-W1.4xW1.4 welded wire fabric and shall be classified as pounds of reinforcing.

**QUANTITIES:** Wingwall Quantities include all quantities outside the neat lines of the box, excluding the hubguard.

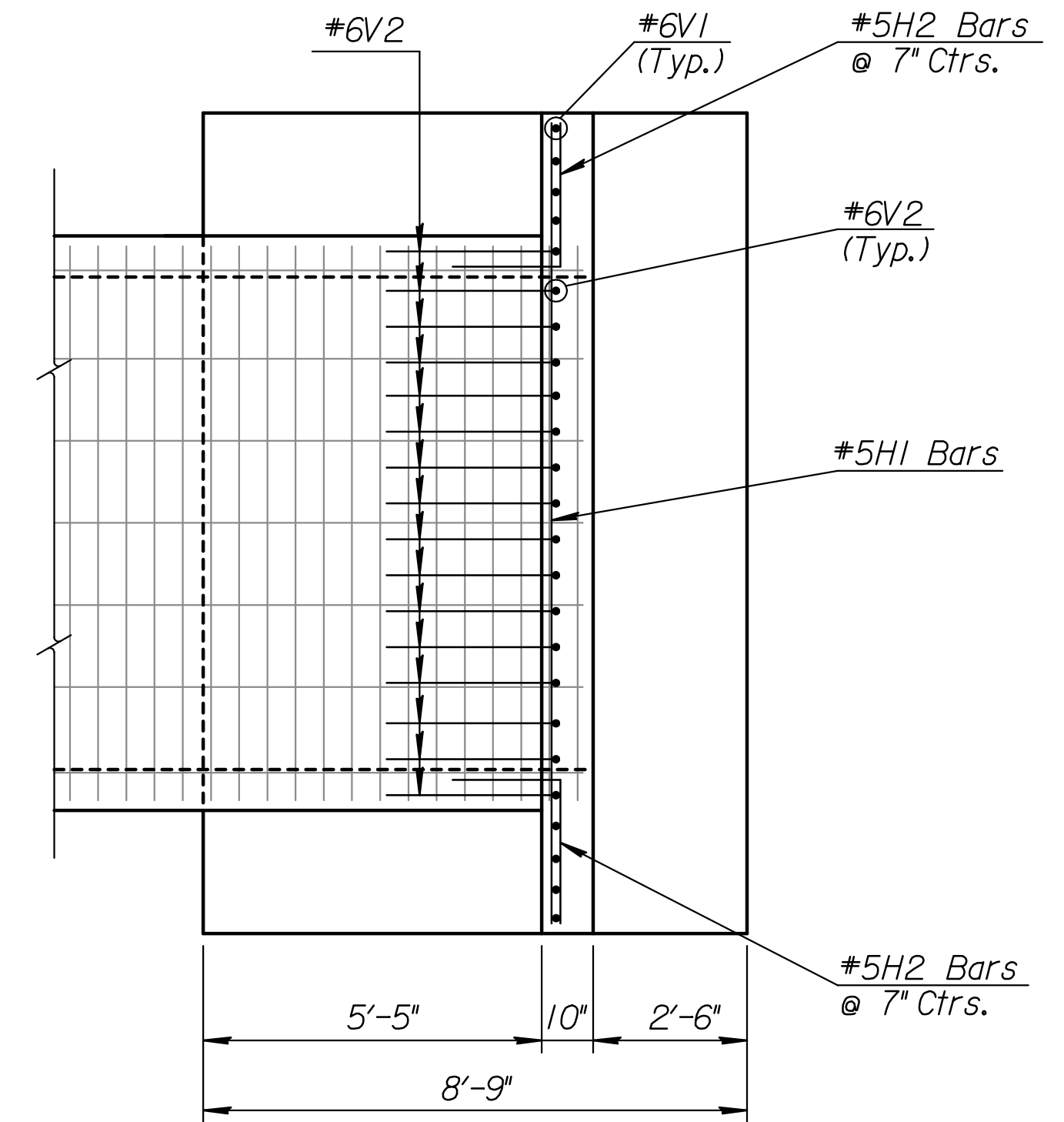
**BACKFILL MATERIAL:** Soils judged as high plasticity clays, fat clays, expansive clays, or organic clays are unsuitable for backfill material for wingwalls and will not be used. Where these conditions exist, use Granular Backfill (Wingwalls).

**FOUNDATION STABILIZATION:** Use Foundation Stabilization on all wingwalls unless founded on rock or granular material.

MIN. SPLICE LENGTHS	
#4	1'-4"
#5	1'-8"
#6	2'-0"

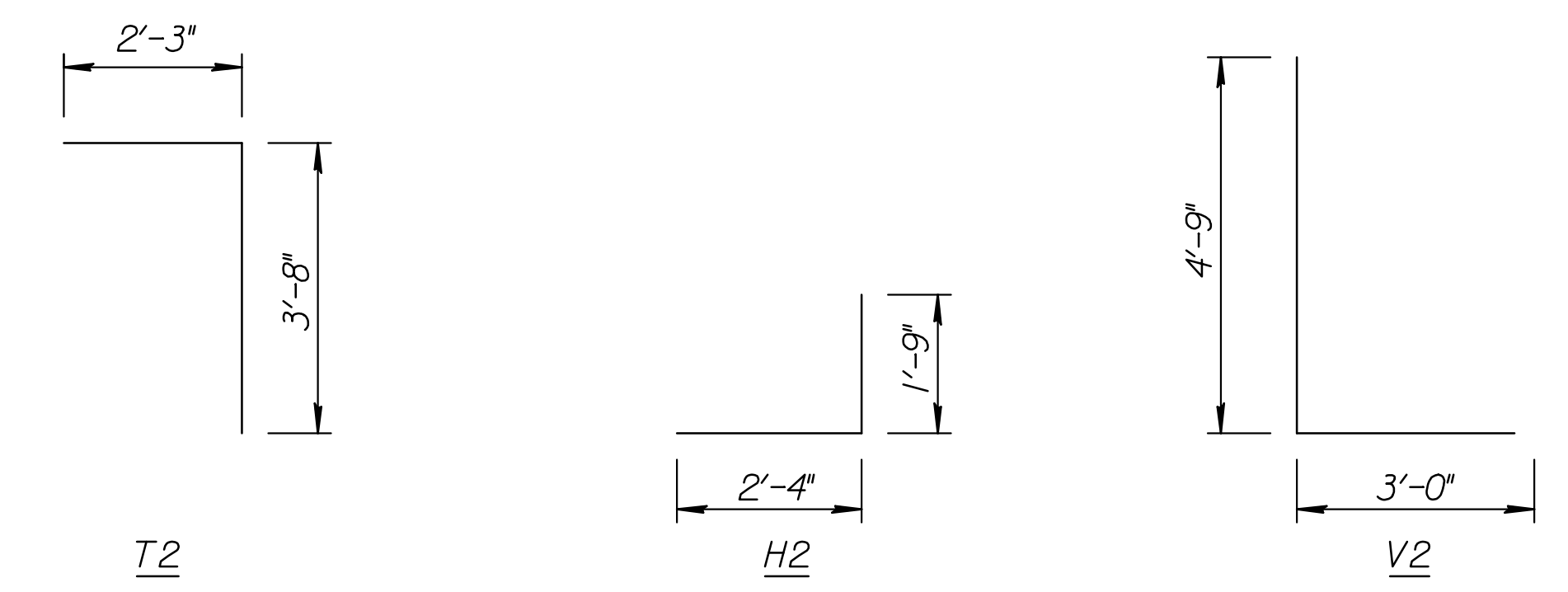


SECTION VIEW A-A



SECTION VIEW B-B

**NOTE:**  
Wingwall floor and toewall shall be constructed with the RCB floor.  
Wingwalls to be constructed with RCB walls.



**BENDING DIAGRAMS**

All dimensions are out to out of bars.

**NOTE:**  
Space Weepholes to clear reinforcing steel. See "RCB Auxiliary Details" sheet for additional weephole details.

\* See Bending Diagram

Quantities listed are included in the Summary of Quantities shown on the RCB.

WINGWALL QUANTITIES		(One End Only)	
Concrete (Grade 4.0)		8.15	CY.
Reinforcing Steel		10.33	Lbs.
Foundation Stabilization		4.91	CY.



NOTE: Reinforcing Bar List is for both wings at one end of box only.	#6 V1	#6 V2 *	#5 H1	#5 H2 *	#6 B1	#6 B2	#5 B3	#5 T1	#5 T2 *																													
	No.	Length	No.	Length	No.	Length	No.	Length	No.	Length	No.	Length	No.	Length	No.	Length	No.	Length																				
° Skew	10	10'-9"	24	7'-9"	9	13'-0"	20	4'-1"	16	3'-6"	6	13'-0"	14	8'-5"	3	13'-0"	24	5'-11"																				

3					
2					
1					
NO.	DATE	REVISIONS	BY	APP'D	
KANSAS DEPARTMENT OF TRANSPORTATION					
HARRY ST.			Sta. 62+11.18		
STRAIGHT WINGWALLS					
6 ft Rise (0°Skew)					
BR 11.00.06			Sedgwick Co.		
FHWA APPROVAL	DESIGNED	DATE	QUANTITIES	TRACED	
	DESIGN CK.	DETAIL CK.	QUAN. CK.	TRACE CK.	

Plotted By: rjm  
 Plot Location: %KDOTGRP%  
 File: I:\2008\08718\Office Check\08718-060-816-RCB\_Wings\_Special.dgn  
 Plot Date: 2/17/2010