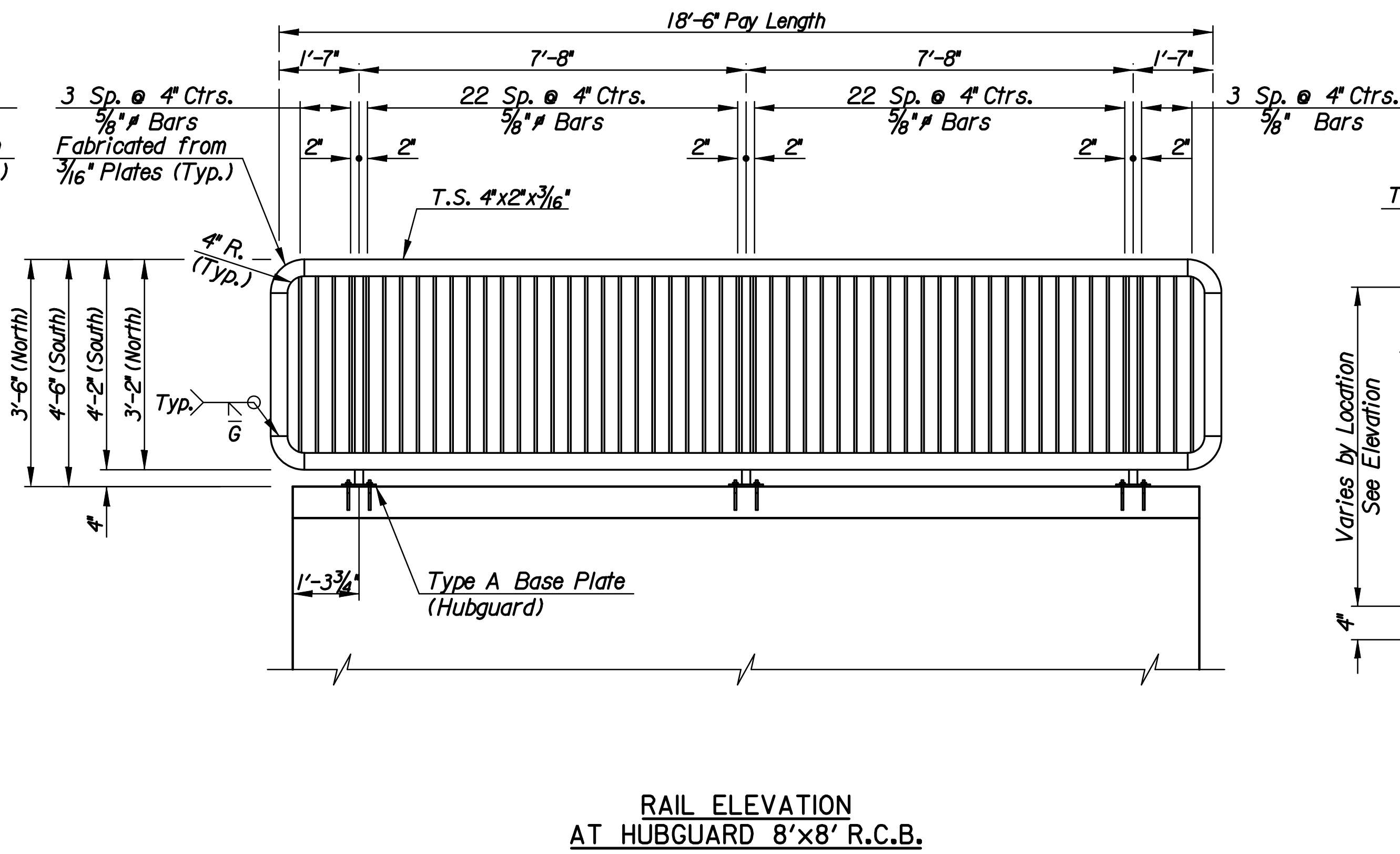
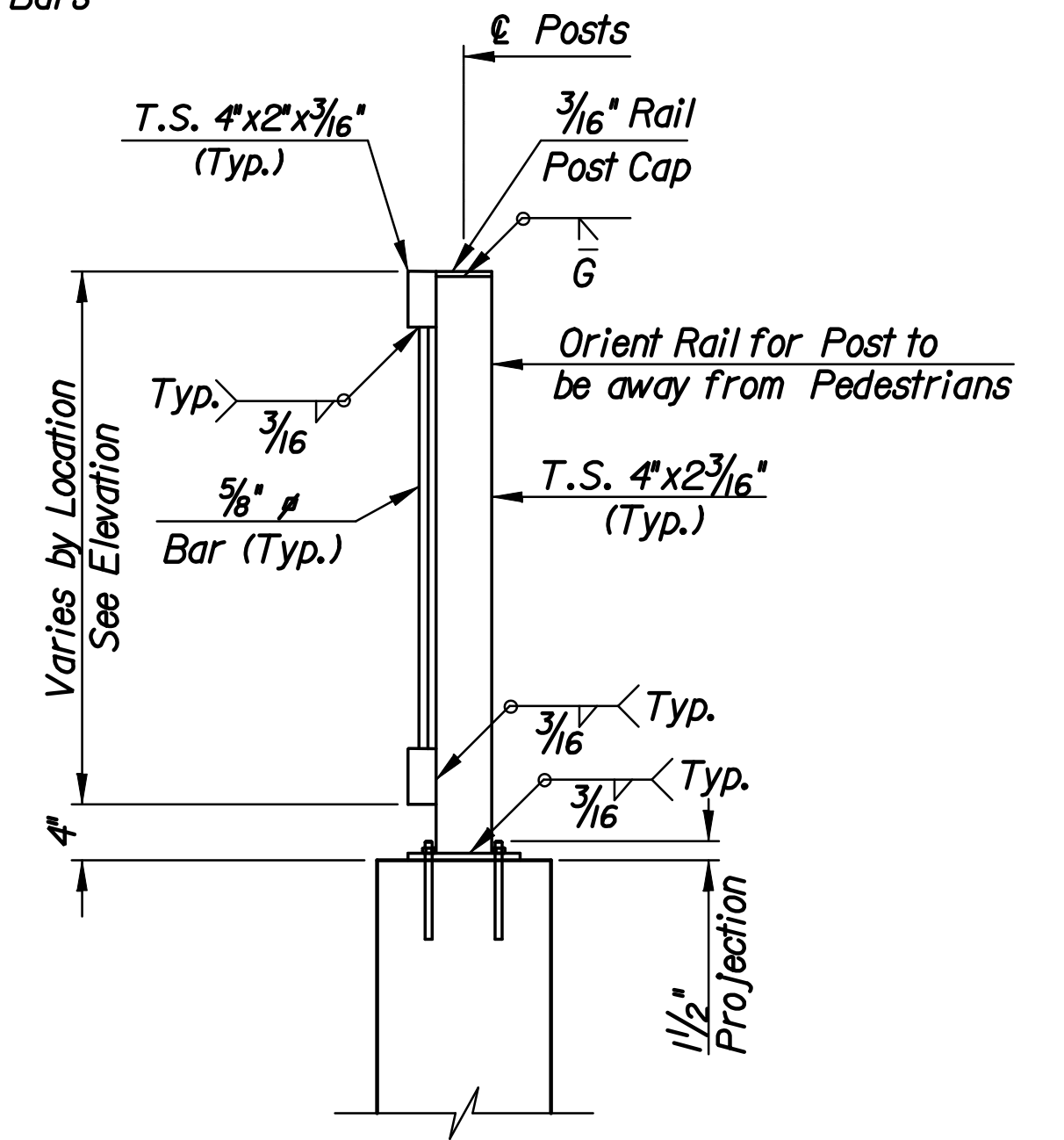


RAIL ELEVATION AT TYPICAL WING



RAIL ELEVATION AT HUBGUARD 8'x8' R.C.B.



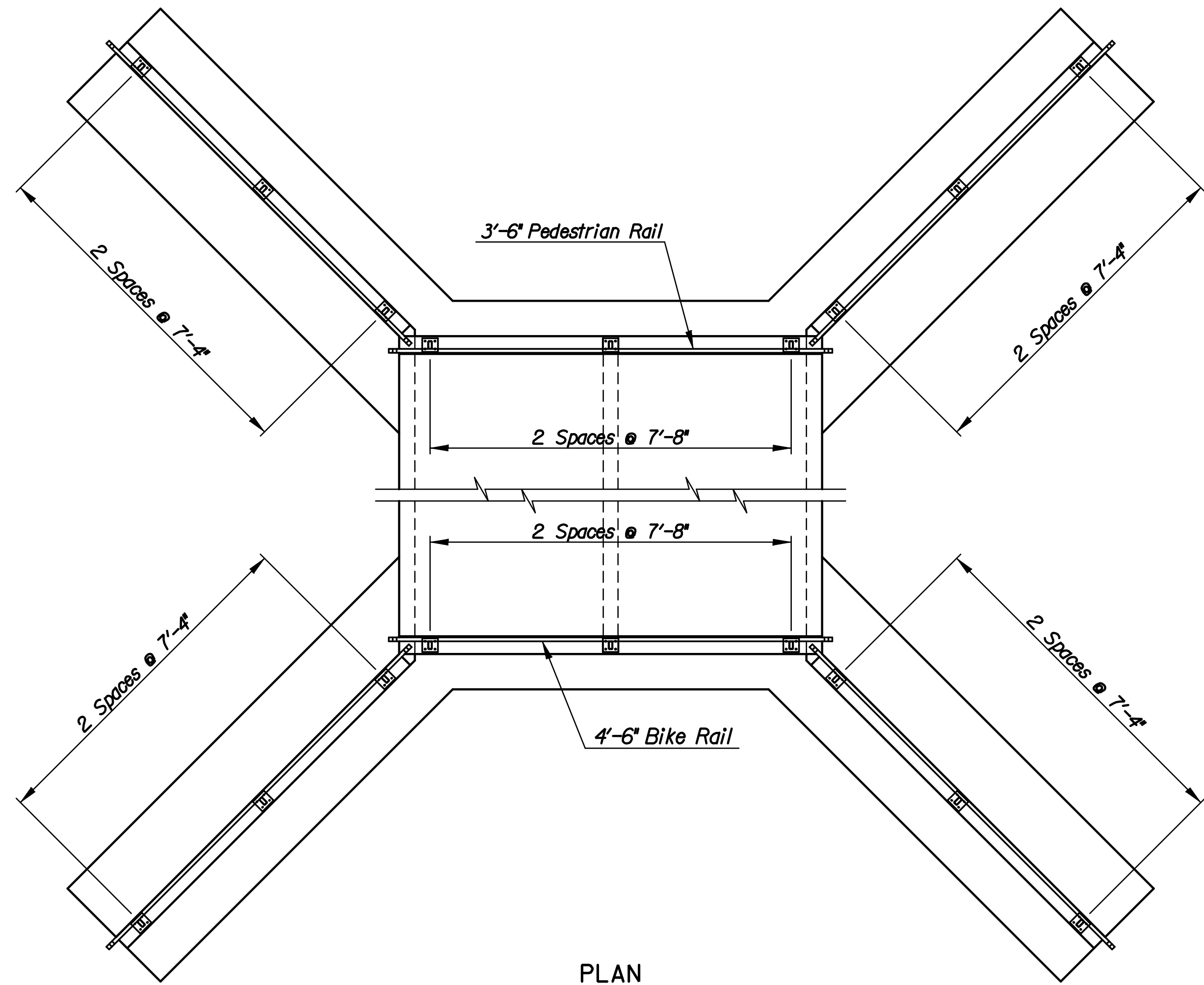
TYPICAL POST

Center Posts on Hubguard or Wingwall

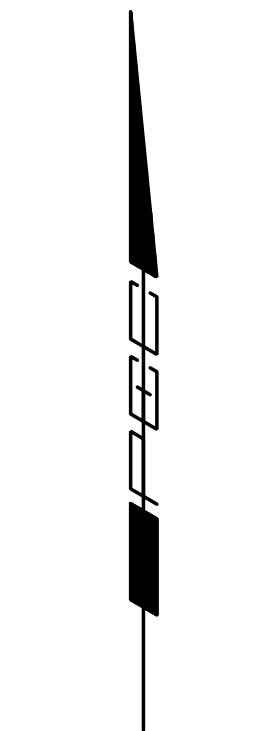
GENERAL NOTES

The horizontal members of the Rail and Posts shall be hollow structural tubing. All structural steel tubing shall comply to A.S.T.M. designation A36 or A500 Grade B respectively. Rail shall be fabricated in lengths as shown from joint to joint and joint to end. Post and Bars shall be set vertical and shimmed if required. Prior to painting abrasive blast to commercial finish SSPC-SP6 to obtain a surface profile of 1-1/2 Mils. The shop and field coats applied to structural steel shall conform to an inorganic Zinc Primer with water-borne Acrylic finish coat. (The finish coat shall match Carboline #C900, Ebony Black). Provide a color sample to the Engineer with shop drawing submittal. Material and construction shall conform to the structural welding code A.W.S. D1.1-01. Shop details must be submitted and approved by the Engineer.

BILL OF MATERIALS		
Item	Quantity	Unit
4'-6" Rail	54.2	Lin. Ft.
3'-6" Rail	54.2	Lin. Ft.
* Type A Base Plate	6	Each
* Type B Base Plate	12	Each
* For Information Only		



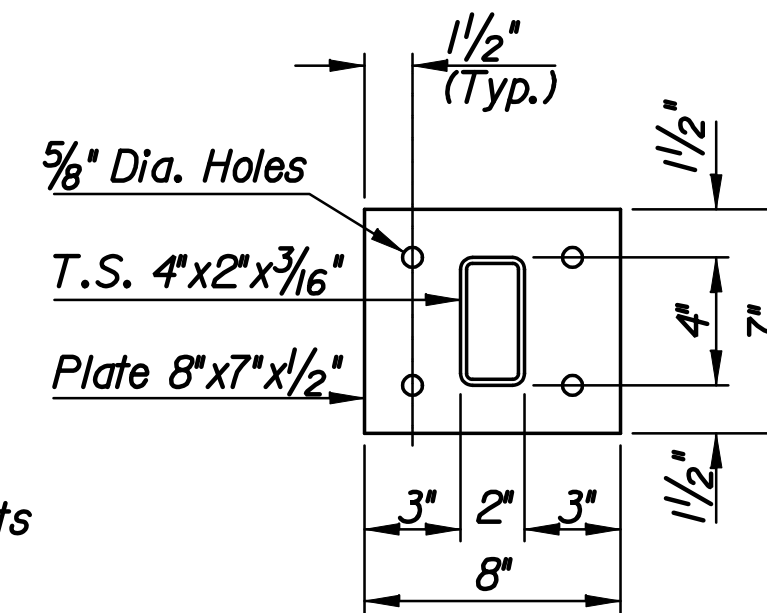
PLAN



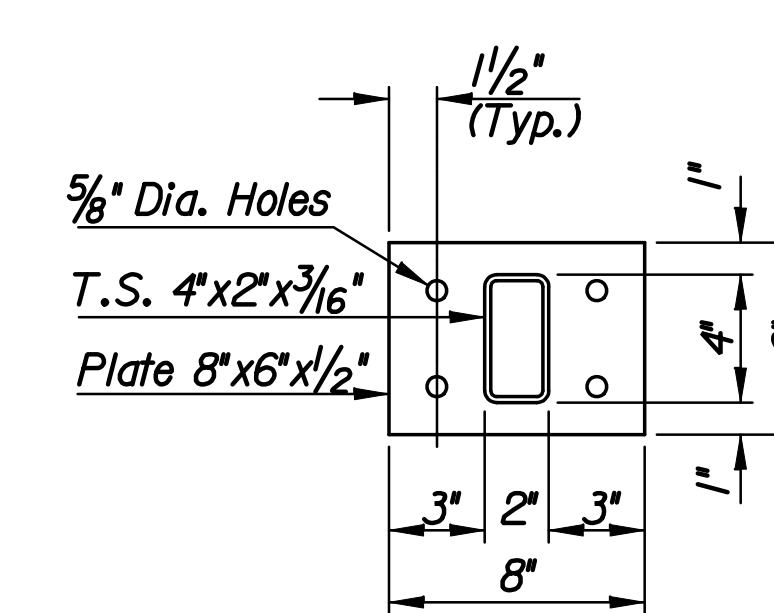
Scale: 1" = 4'

Galvanized (ASTM A153)
(May substitute expandable anchor bolts when approved by the Engineer)

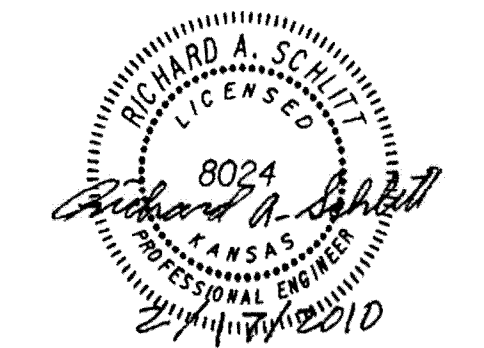
ANCHOR BOLT



TYPE A BASE PLATE
(6 Required)



TYPE B BASE PLATE
(12 Required)



No.	Revisions	By	Date
<p>HARRY ST. CITY OF WICHITA S+4, 29+18.80</p> <p>2-8X8 HAND RAIL DETAILS</p> <p>127th and Harry St.</p> <p>PROJECT NO. 87 N-0514-01 SEDGWICK COUNTY</p>			
<p>Professional Engineering Consultants, P.A.</p> <p>300 S. TOPEKA - WICHITA, KANSAS 67202</p> <p>316-262-2691 • FAX 316-262-3003</p>			
Designed by	R.J.M.	Checked by	R.A.S.
Drawn by	R.J.M.	Date	Feb. 2010 Job No. 08778