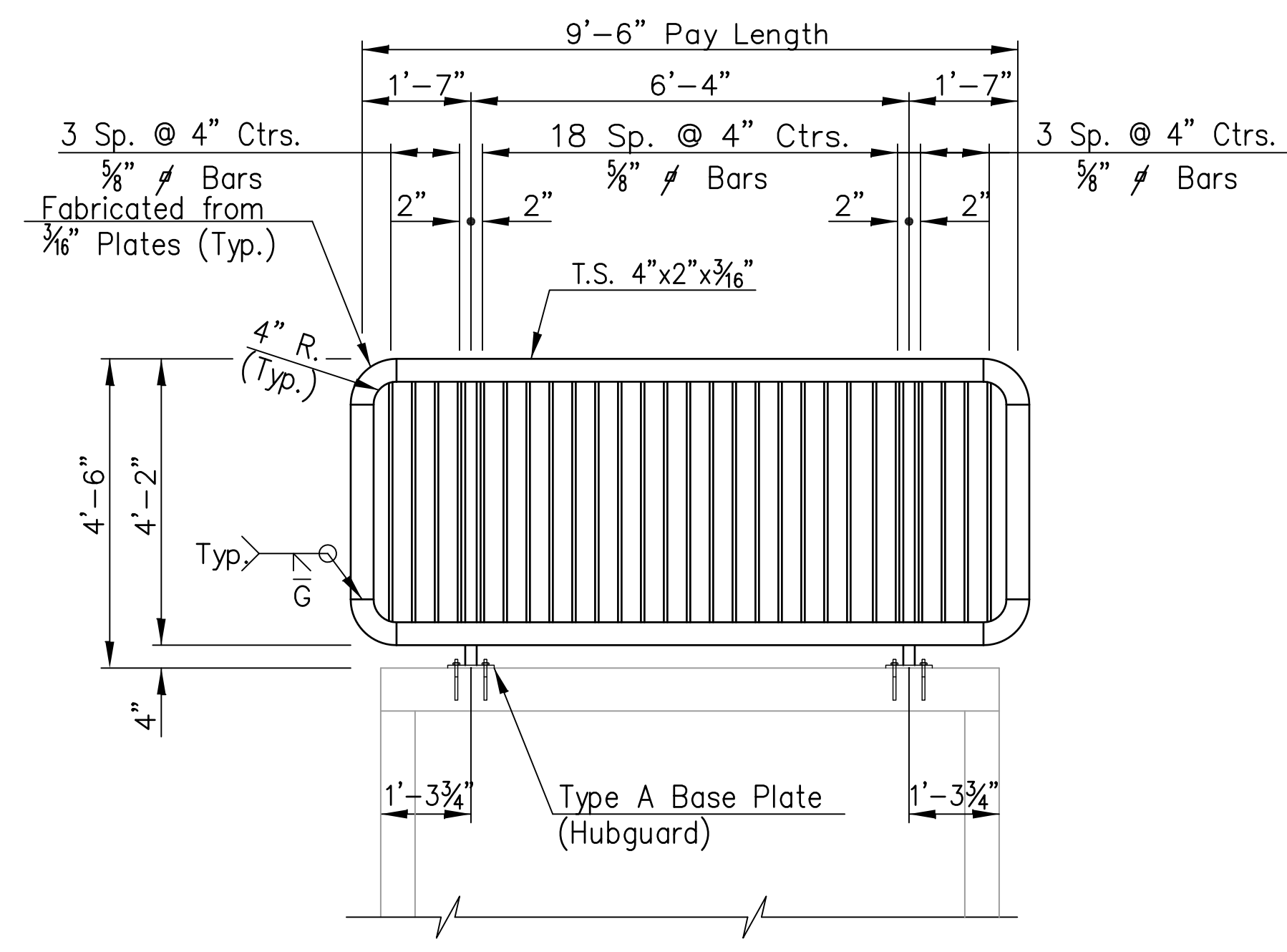
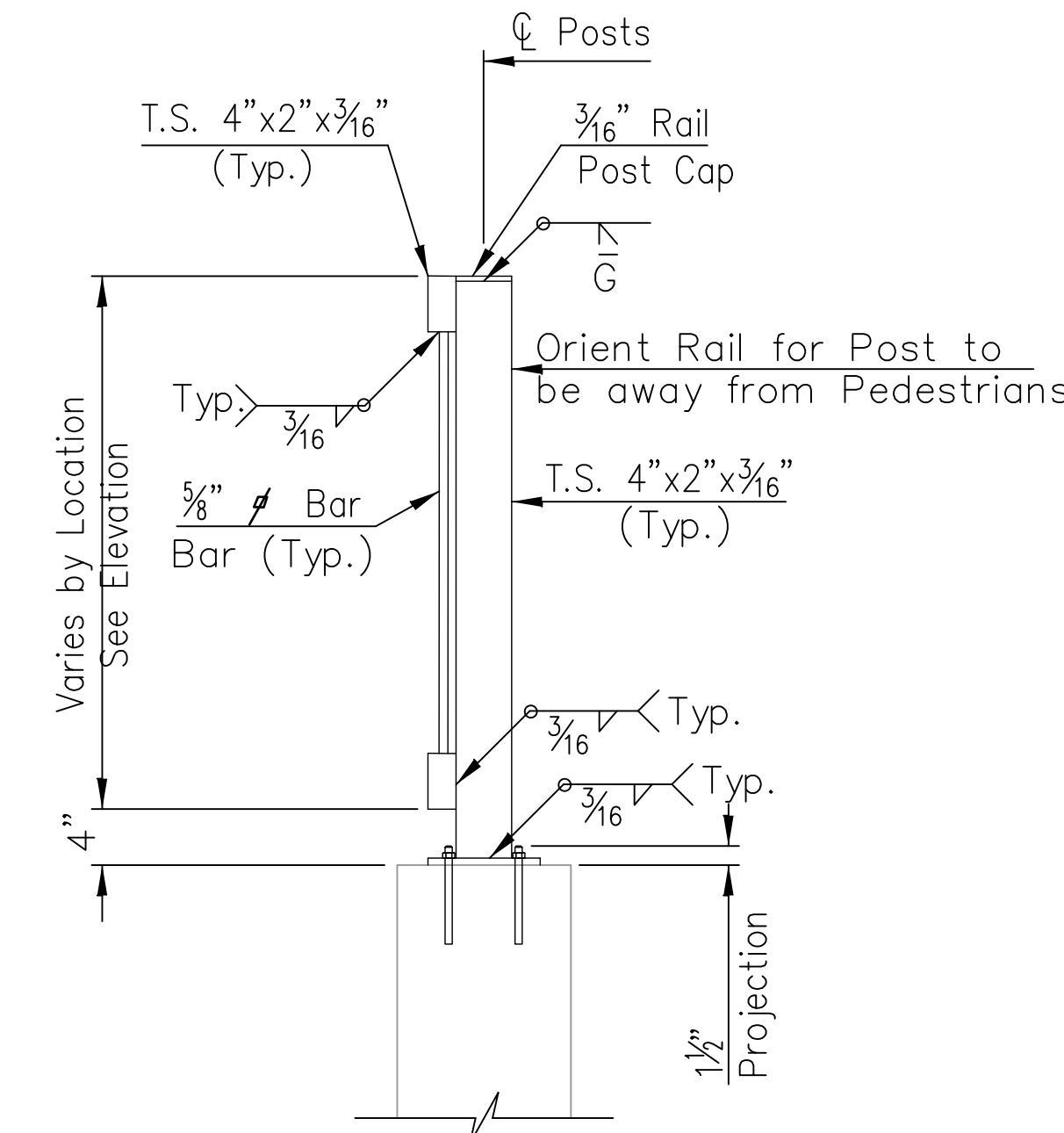


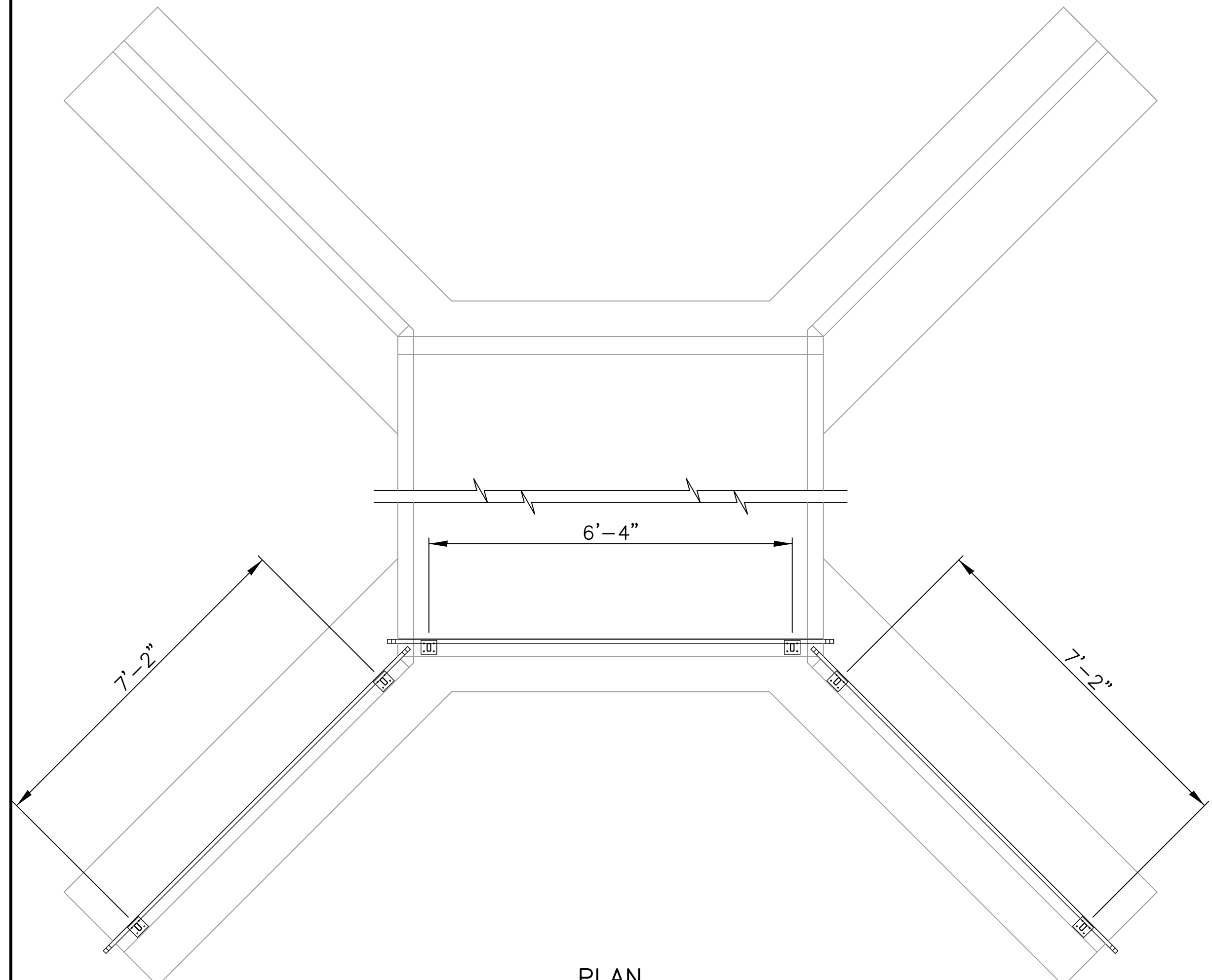
**RAIL ELEVATION  
AT TYPICAL WING**



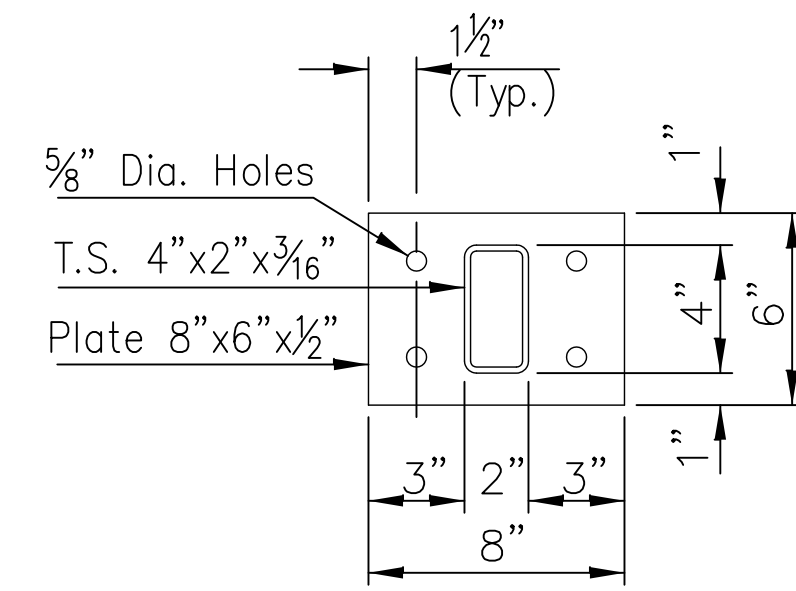
**RAIL ELEVATION  
AT HUBGUARD 8'x8' R.C.B.**



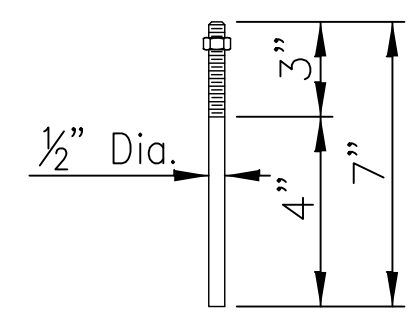
**TYPICAL POST**  
Center Posts on Hubguard or Wingwall



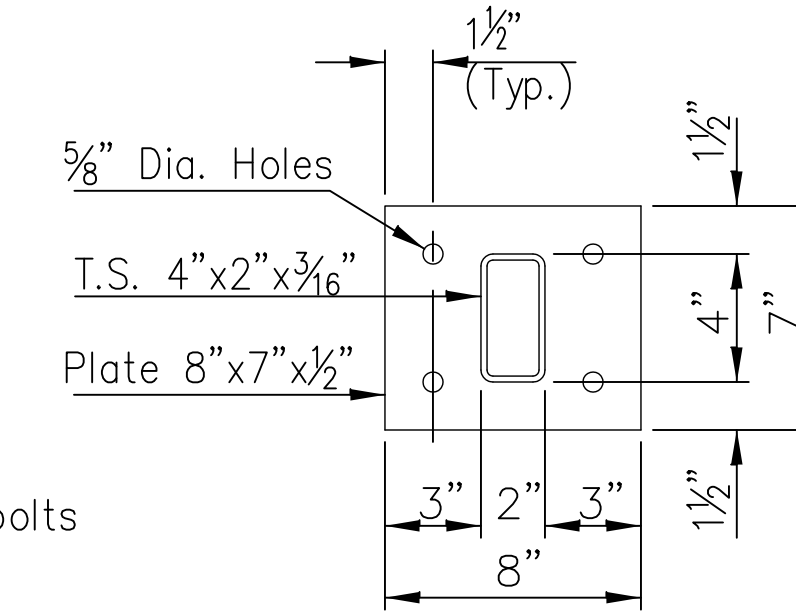
**PLAN**



**TYPE B BASE PLATE**  
(4 Required)



**ANCHOR BOLT**  
Galvanized (ASTM A153)  
(May substitute expandable anchor bolts when approved by the Engineer)



**TYPE A BASE PLATE**  
(2 Required)

**GENERAL NOTES**

The horizontal members of the Rail and Posts shall be hollow structural tubing. All structural steel tubing shall comply to A.S.T.M. designation A36 or A500 Grade B respectively. Rail shall be fabricated in lengths as shown from joint to joint and joint to end. Post and Bars shall be set vertical and shimmed if required. Prior to painting abrasive blast to commercial finish SSPC-SP6 to obtain a surface profile of 1-1/2 Mils. The shop and field coats applied to structural steel shall conform to an inorganic Zinc Primer with water-borne Acrylic finish coat. (The finish coat shall match Carboline #C900, Ebony Black). Provide a color sample to the Engineer with shop drawing submittal. Material and construction shall conform to the structural welding code A.W.S. D1.1-01. Shop details must be submitted and approved by the Engineer.

<b>HARRY - GREENWICH TO 127TH STREET EAST STA. 51+90.20 - 8X4 HAND RAIL DETAILS WICHITA, KANSAS</b>		DESIGN <b>KWL</b>	DRAWN <b>RA</b>	SHEET <b>82</b>	
 <b>Ruggles &amp; Bohm, P.A.</b> Engineering, Surveying, Land Planning		924 North Main Wichita, Kansas 67203 www.rbkansas.com	(316) 264-8008 (316) 264-4621 fax E-mail: info@rbkansas.com	REVIEW <b>RA</b>	UTILITY <b>82</b>
DRAWING FILE <b>PedRail-8x4</b>	PROJECT NUMBER <b>87 N-0514-01</b>	DATE	OF <b>148</b>		