

ALIGNMENT LAYOUT (ACCESS ROAD)
TABLE OF COORDINATES

LOCATION	STATION	OFFSET	ELEVATION
1	63+28.17	161.62 Ft. Lt.	1315.10
2	65+83.20	151.16 Ft. Lt.	1311.85
3	68+42.21	140.70 Ft. Lt.	1308.40
4	68+52.80	138.77 Ft. Lt.	1308.10
5	68+61.66	136.19 Ft. Lt.	1308.05

Note: All Station and offsets are relative to ϵ Harry Street.

ALIGNMENT LAYOUT (CHANNEL)
TABLE OF COORDINATES

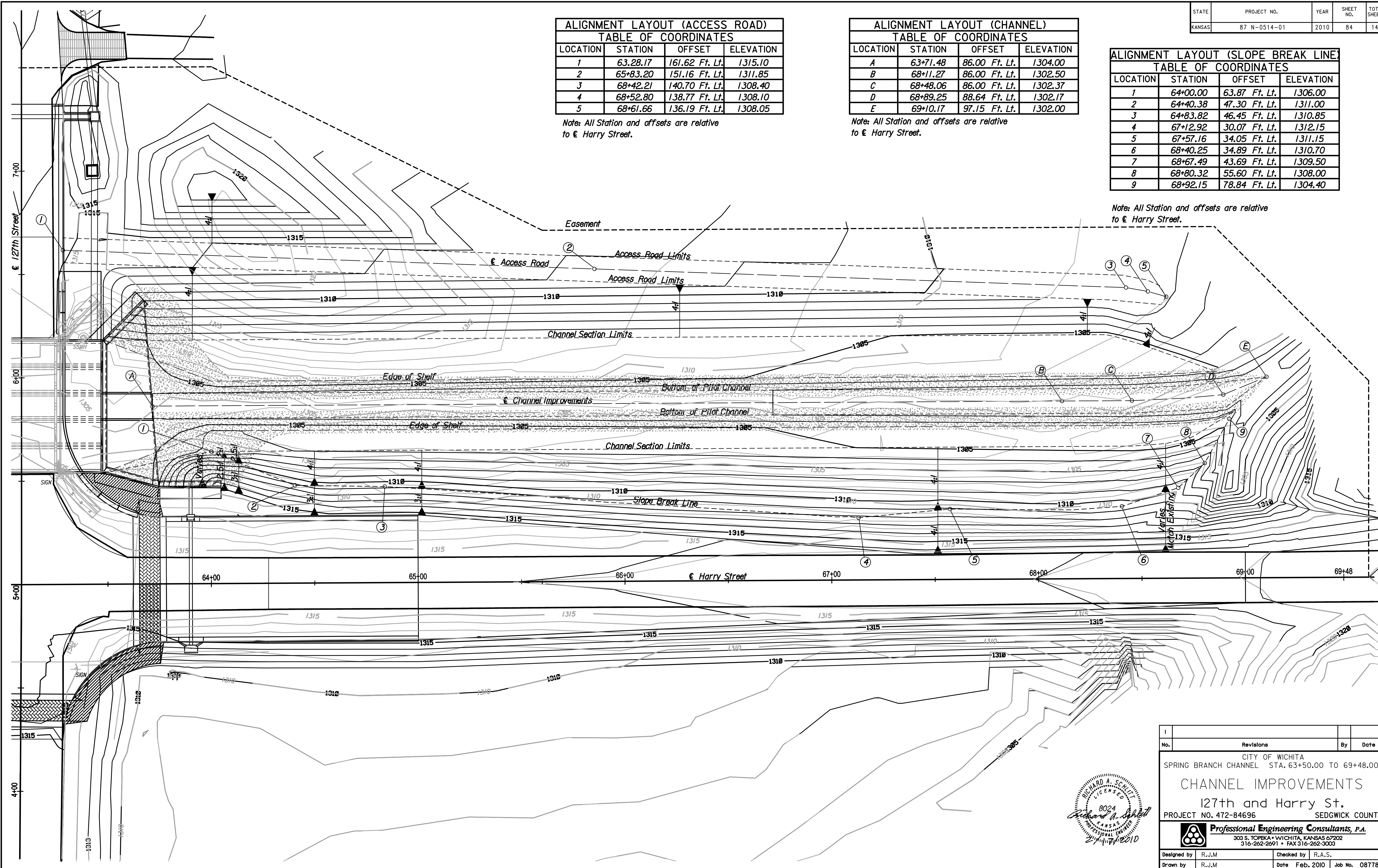
LOCATION	STATION	OFFSET	ELEVATION
A	63+71.48	86.00 Ft. Lt.	1304.00
B	68+11.27	86.00 Ft. Lt.	1302.50
C	68+48.06	86.00 Ft. Lt.	1302.37
D	68+89.25	88.64 Ft. Lt.	1302.17
E	69+10.17	97.15 Ft. Lt.	1302.00

Note: All Station and offsets are relative to ϵ Harry Street.

ALIGNMENT LAYOUT (SLOPE BREAK LINE)
TABLE OF COORDINATES

LOCATION	STATION	OFFSET	ELEVATION
1	64+00.00	63.87 Ft. Lt.	1306.00
2	64+40.38	47.30 Ft. Lt.	1311.00
3	64+83.82	46.45 Ft. Lt.	1310.85
4	67+12.92	30.07 Ft. Lt.	1312.15
5	67+57.16	34.05 Ft. Lt.	1311.15
6	68+40.25	34.89 Ft. Lt.	1310.70
7	68+67.49	43.69 Ft. Lt.	1309.50
8	68+80.32	55.60 Ft. Lt.	1308.00
9	68+92.15	78.84 Ft. Lt.	1304.40

Note: All Station and offsets are relative to ϵ Harry Street.



Plotted By: rjm
Plotted: 2/17/2010
File: i:\2008\08778\Office Check\08778-084-ChanImprov_Pilot.dgn



No.	Revisions	By	Date

CITY OF WICHITA
SPRING BRANCH CHANNEL STA. 63+50.00 TO 69+48.00
CHANNEL IMPROVEMENTS
127th and Harry St.
PROJECT NO. 472-84696 SEDGWICK COUNTY

Professional Engineering Consultants, P.A.
303 S. TOPEKA - WICHITA, KANSAS 67202
316-262-2691 • FAX 316-262-3003

Designed by	R.J.M	Checked by	R.A.S.
Drawn by	R.J.M	Date	Feb. 2010
		Job No.	08778

Sh. No. 84