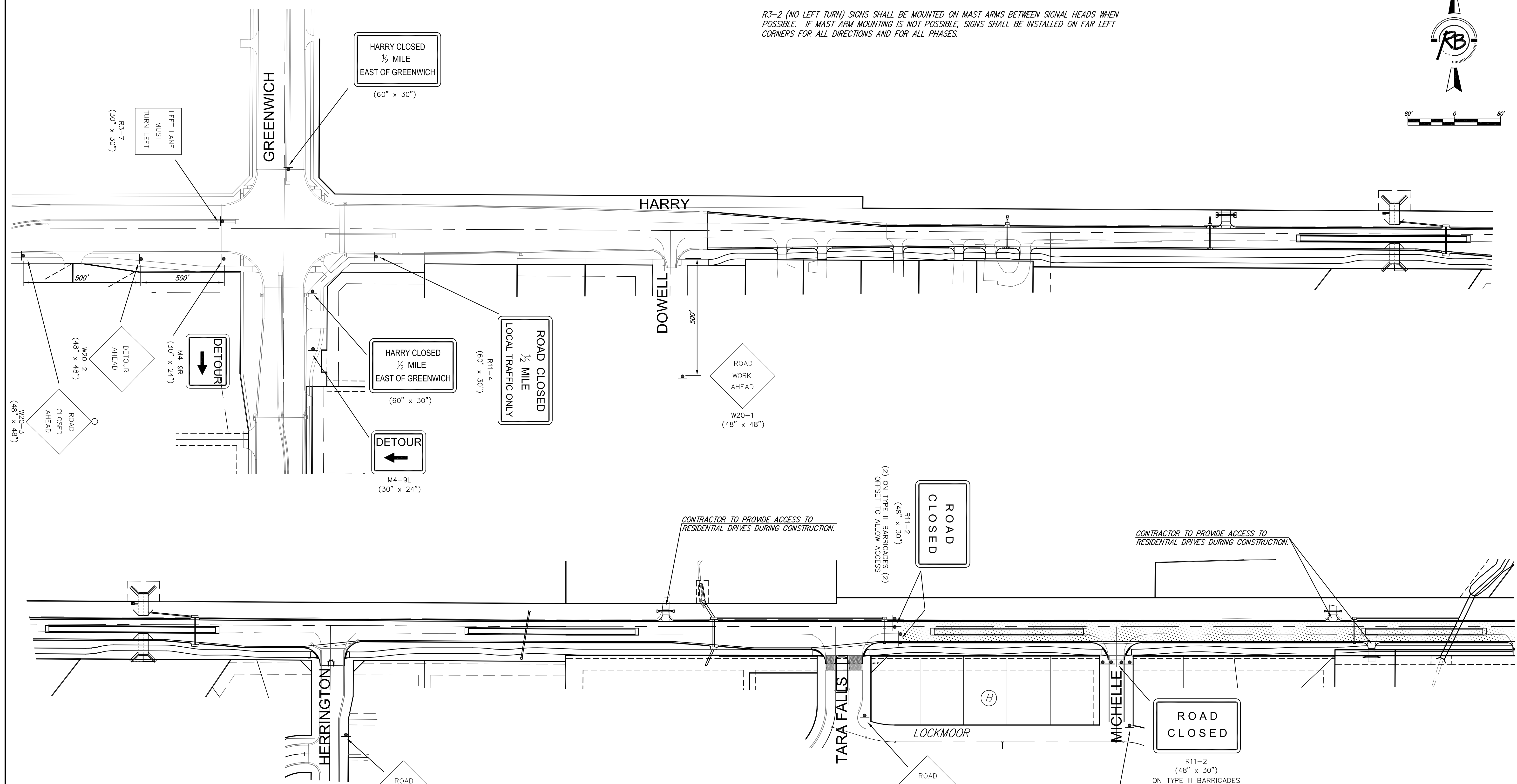
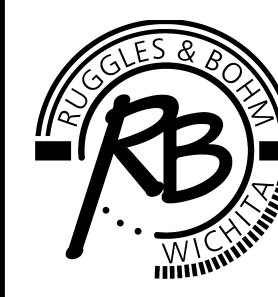


"NO LEFT TURN" NOTE:
 R3-2 (NO LEFT TURN) SIGNS SHALL BE MOUNTED ON MAST ARMS BETWEEN SIGNAL HEADS WHEN POSSIBLE. IF MAST ARM MOUNTING IS NOT POSSIBLE, SIGNS SHALL BE INSTALLED ON FAR LEFT CORNERS FOR ALL DIRECTIONS AND FOR ALL PHASES.



Taper Formula
 $L = WS$ FOR SPEEDS OF 45 MPH OR MORE
 $L = WS / 60$ FOR SPEEDS OF 40 MPH OR LESS
 WHERE:
 L = MINIMUM LENGTH OF TAPER IN FEET
 S = NUMERICAL VALUE OF POSTED SPEED PRIOR TO WORK IN MPH
 W = WIDTH OF OFFSET IN FEET

- Legend**
- Type III Barricade
 - Type B Warning Light
 - Reflective Drums
 - ▲ Sign
 - Traffic Flow

HARRY STREET - GREENWICH TO 127th ST EAST TRAFFIC CONTROL - PHASE 2 WICHITA, KANSAS		DESIGN KWL
 Ruggles & Bohm, P.A. Engineering, Surveying, Land Planning 924 North Main Wichita, Kansas 67203 www.rbkansas.com		DRAWN RA
		REVIEW
DRAWING FILE {Traffic Control 2-1}		PROJECT NUMBER 87 N-0514-01
		DATE
UTILITY DATE		SHEET 107 OF 148