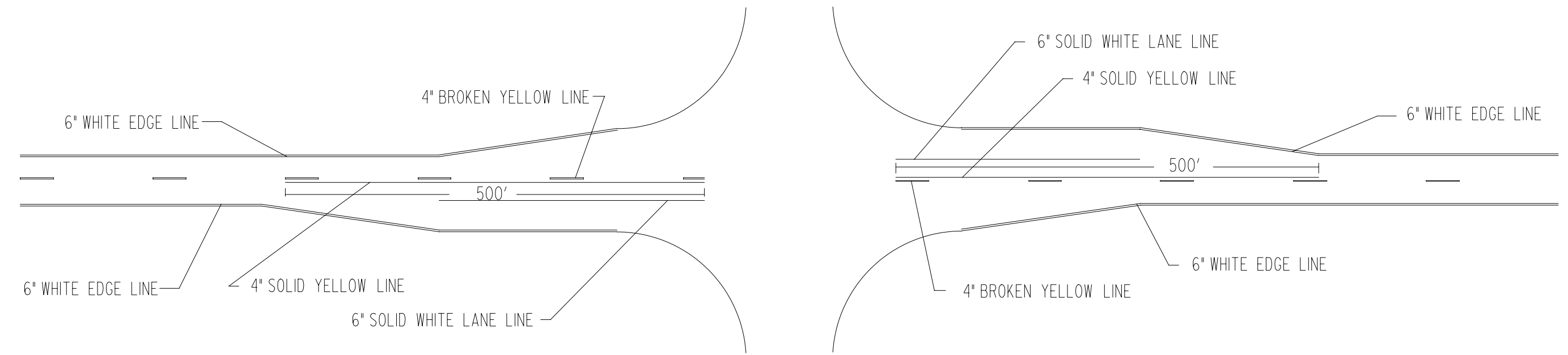


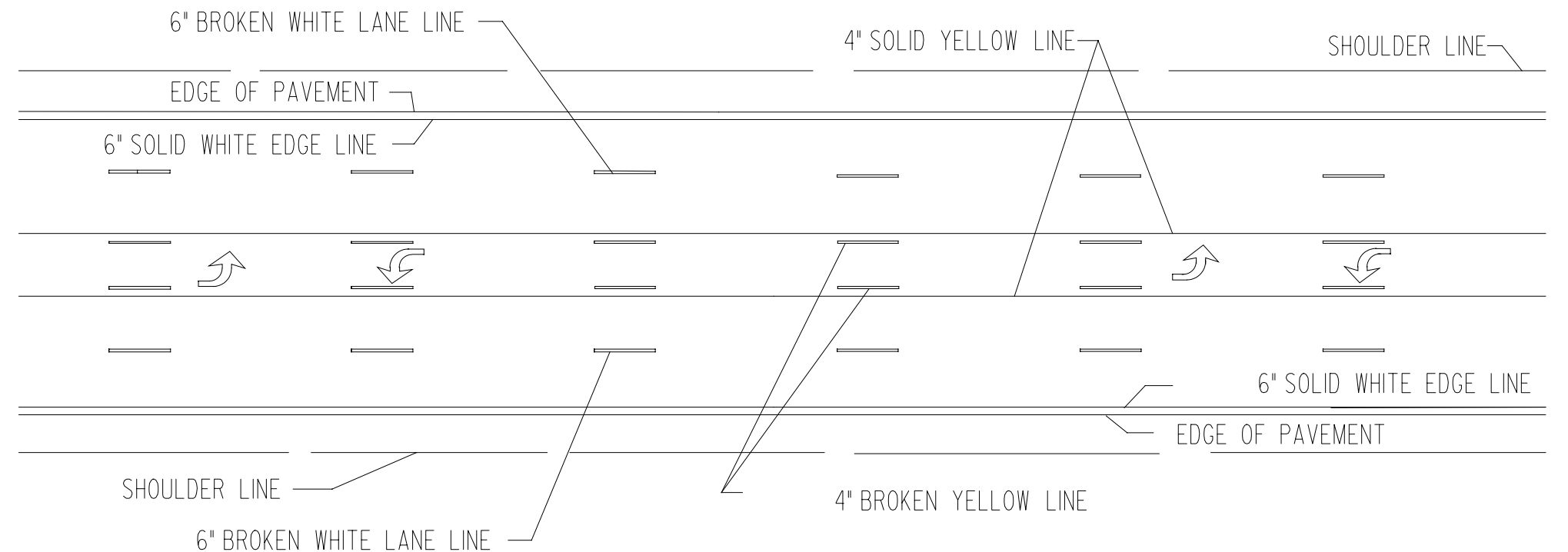
NOTE:
 DOTTED EXTENSION LINE TAPER LENGTH
 POSTED SPEED * 12
 FOR POSTED SPEEDS ABOVE 40 MPH

TYPICAL MARKING FOR AUXILIARY PASSING LANE

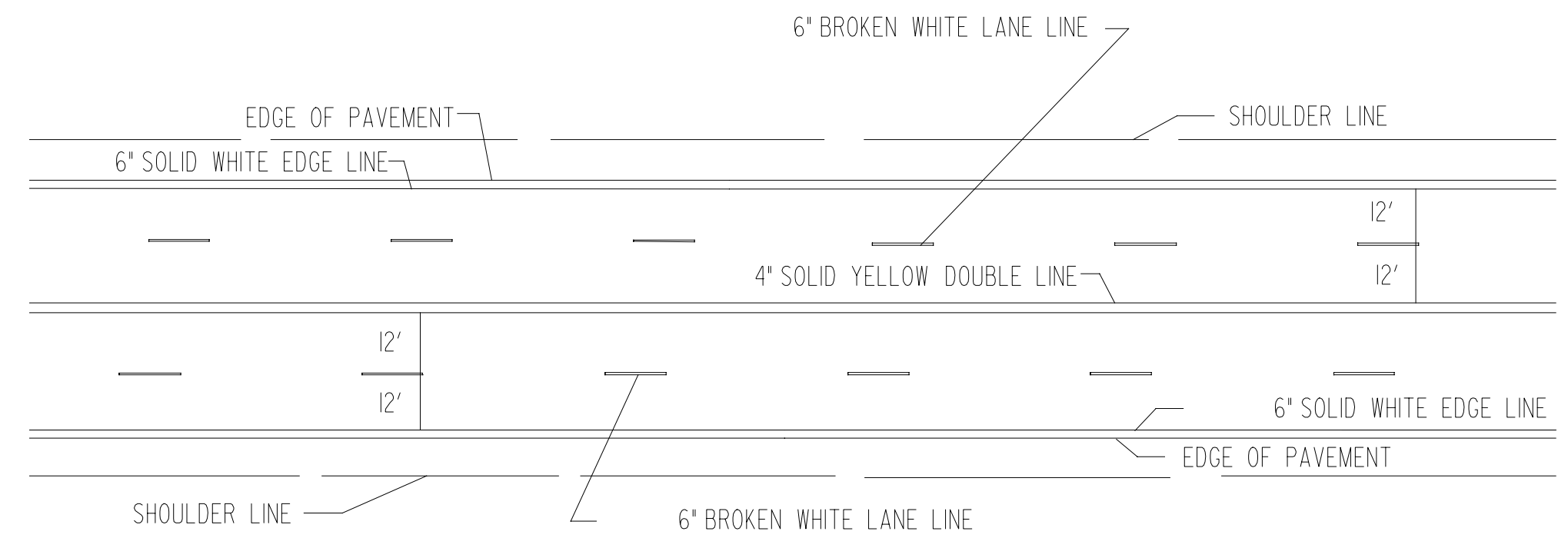
NOTE: ALL PAVEMENT MARKINGS SHALL BE BROKEN AT CROSS ROADS.
 FOR HIGHWAY JUNCTIONS THE NO PASSING ZONE WILL EXTEND 1000' FROM INTERSECTION



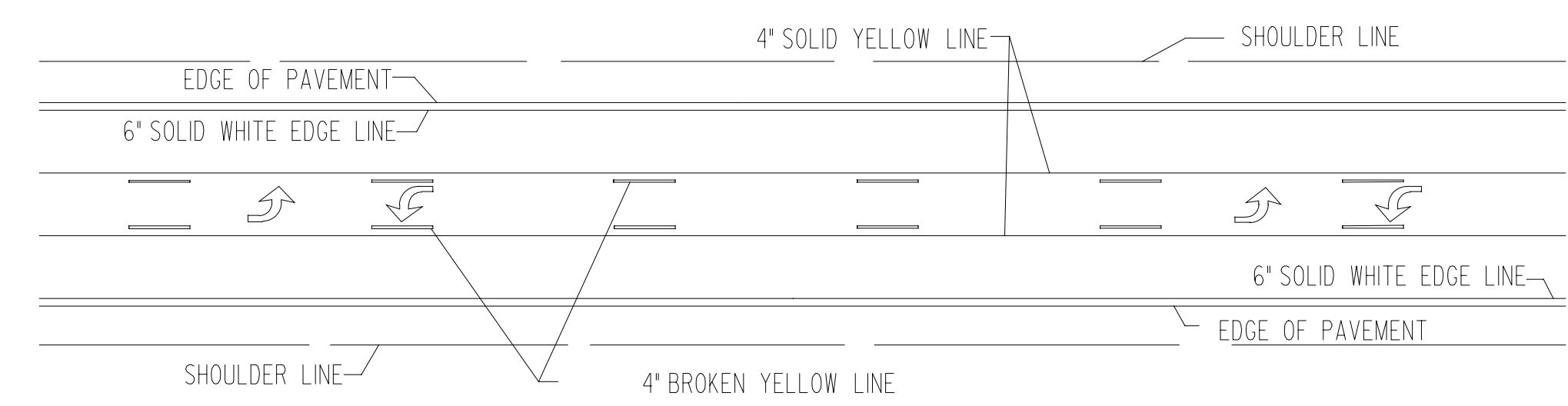
TYPICAL ROAD JUNCTION MARKINGS WITH BYPASS LANES



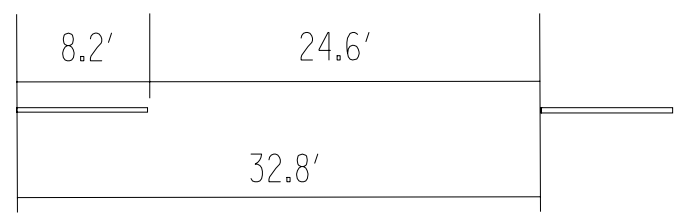
TWO-WAY LEFT TURN DETAIL FOR FIVE LANE ROADWAY



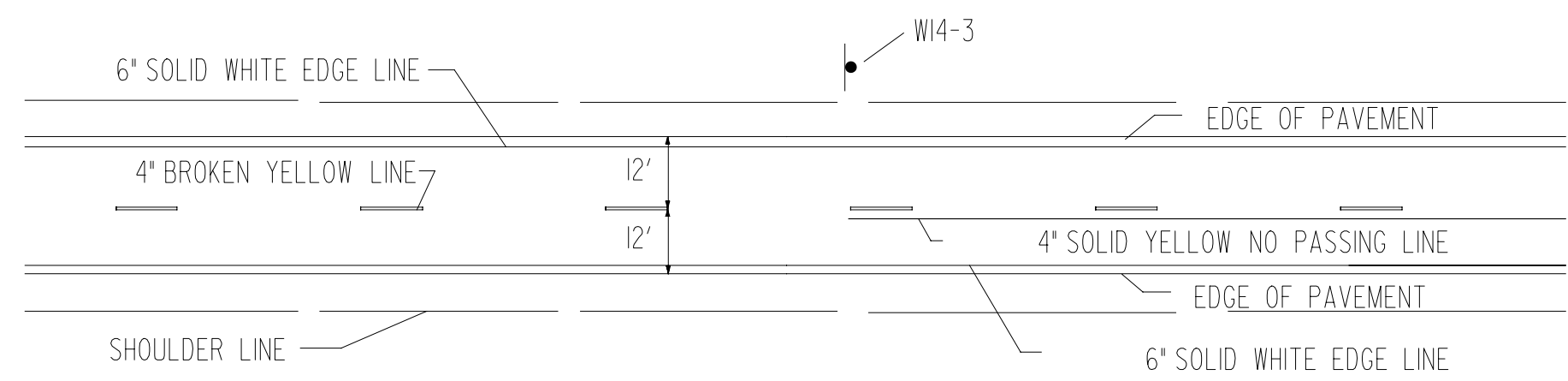
TYPICAL MARKINGS FOR FOUR LANE ROADWAY



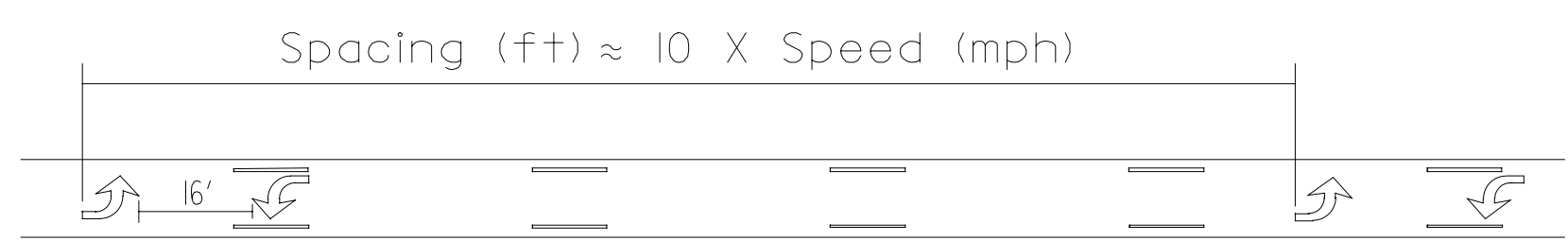
TWO-WAY LEFT TURN DETAIL FOR THREE LANE ROADWAY



TYPICAL SPACING FOR BROKEN LINES UNLESS OTHERWISE NOTED ON PLANS

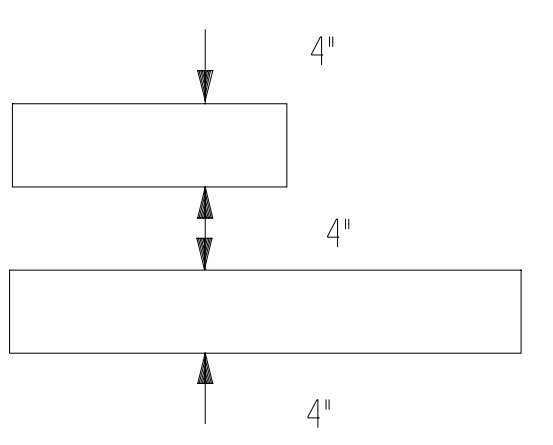


TYPICAL TWO LANE MARKINGS



TWO-WAY LEFT TURN ARROW SPACING DETAIL

NOTE: If arrows are used space the arrows as shown in the spacing detail



TYPICAL SPACING FOR NO PASSING LINES UNLESS OTHERWISE NOTED ON PLANS

NOTE: LONGITUDINAL PAVEMENT MARKING LINES SHALL BE OFFSET A MINIMUM OF 2" FROM LONGITUDINAL PAVEMENT JOINTS.

NOTE: ON NON I, US, AND K ROUTES, 4" EDGE LINES MAY BE INSTALLED. 6" EDGE LINES ARE NOT REQUIRED ON NON I, US, AND K ROUTES.

NO.	DATE	REVISIONS	BY	APP'D
3				
2	09/20/2005	Removed auxiliary passing lane dotted ext. line	JFF	BDG
1	07/26/2005	New FHWA Approval Date	JFF	BDG

KANSAS DEPARTMENT OF TRANSPORTATION

TYPICAL PAVEMENT MARKING DETAILS FOR UNDIVIDED ROADWAYS

TE308

FHWA APPROVAL	07/26/2005	APP'D.	Brian D. Gower
DESIGNED	JFF	DETAILED	QUANTITIES
DESIGN CK.	BDG	DETAIL CK.	QUAN. CK.
			TRACED
			TRACE CK.

Plotted on: Friday, February 26, 2010 8:59
 kschomaker Plot Queue: \\CBSM\00\K0088933-PS
 Plot 1: Scaler: 0.0533444 Pen Table: 50317.naf.pen
 Design Filename: \\kcow001\jobs\50317\roadway\CD\Signing&Pvink\1e3108.dgn

\\kcow001\jobs\50317\roadway\CD\Signing&Pvink\1e3108.dgn