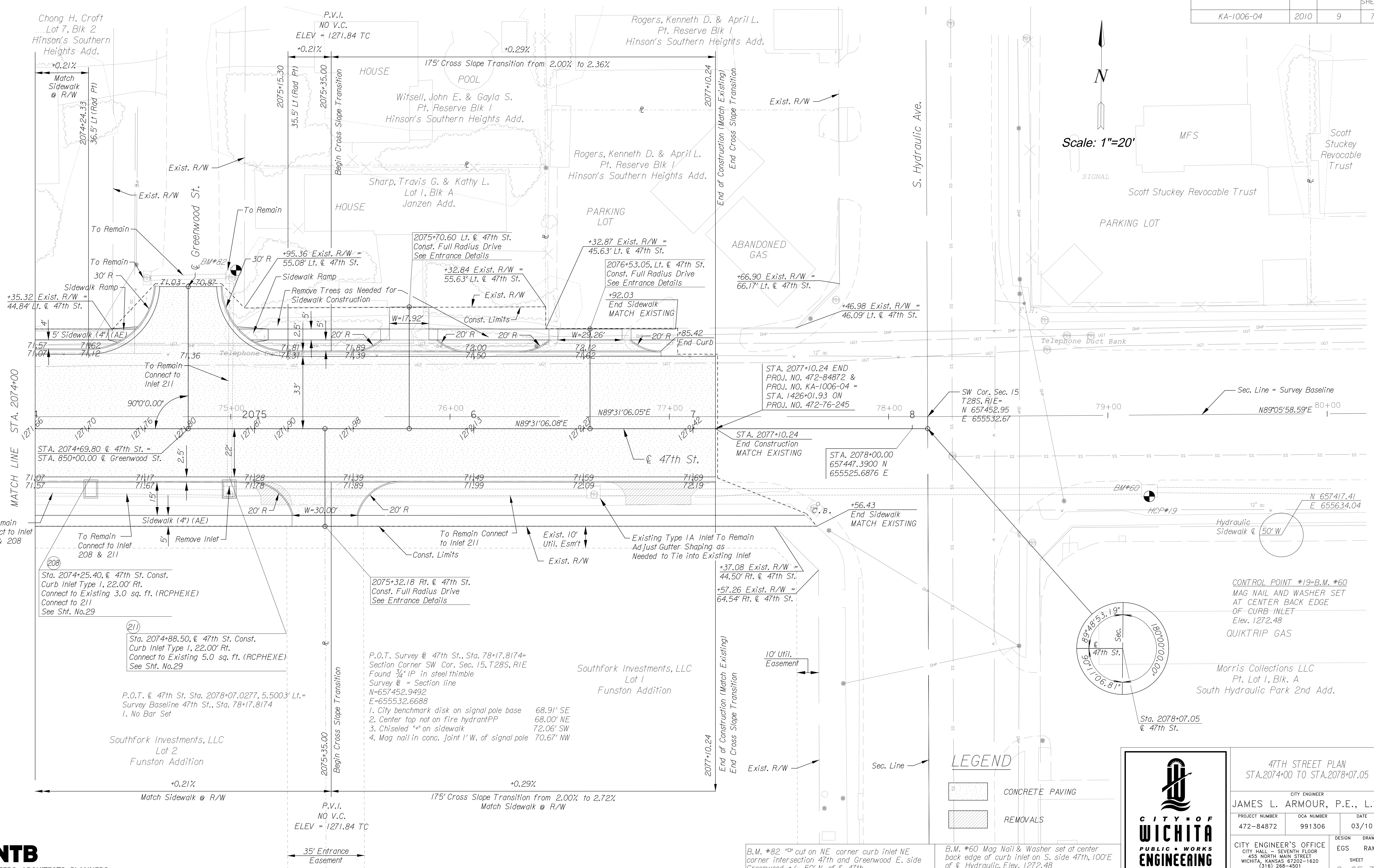


PROJECT NO.	YEAR	SHEET NO.	TOTAL SHEETS
KA-1006-04	2010	9	71

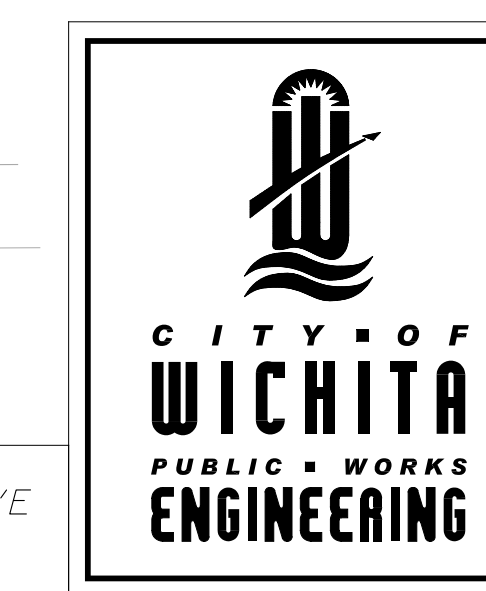


Scale: 1"=20'



LEGEND

- CONCRETE PAVING
- REMOVALS



CITY ENGINEER		
47TH STREET PLAN STA. 2074+00 TO STA. 2078+07.05		
JAMES L. ARMOUR, P.E., L.S.		
PROJECT NUMBER 472-84872	OCA NUMBER 991306	DATE 03/10
CITY ENGINEER'S OFFICE CITY HALL - SEVENTH FLOOR 455 NORTH MAIN STREET WICHITA, KANSAS 67202-1620 (316) 268-4501 (316) 268-4114 FAX		DESIGN DRAWN EGS RAM SHEET 9 OF 71

Plotted on: Friday, February 26, 2010 6:59
 Kechencker Plot Output: \\CBSM001\KCS08935-PS
 Plot Scale: 1/8"=1'-0"
 Design Filename: \\kco001\jobs\50317\Roadway\CD\Plan_VT\Profiles\47th_p1n03.dgn



B.M. #82 "0" cut on NE corner curb inlet NE corner intersection 47th and Greenwood E. side Greenwood +/- 50' N. of 47th Sta. 2074+91.67, 72.28' Lt., 47th, Elev. 1270.98

B.M. #60 Mag Nail & Washer set at center back edge of curb inlet on S. side 47th, 100' E of 47th, Elev. 1272.48

- P.O.T. Survey @ 47th St., Sta. 78+17.8174= Section Corner SW Cor. Sec. 15, T28S, R1E Found 3/4" IP in steel thimble Survey @ = Section line N=657452.9492 E=655532.6688
1. City benchmark disk on signal pole base 68.91' SE
 2. Center top nail on fire hydrant/PP 68.00' NE
 3. Chiseled "4" on sidewalk 72.06' SW
 4. Mag nail in conc. joint 1' W. of signal pole 70.67' NW

CONTROL POINT #19-B.M. #60
 MAG NAIL AND WASHER SET AT CENTER BACK EDGE OF CURB INLET OF CURB INLET Elev. 1272.48
 QUIKTRIP GAS

Morris Collections LLC
 Pt. Lot 1, Bk. A
 South Hydraulic Park 2nd Add.

STA. 2077+10.24 END
 PROJ. NO. 472-84872 &
 PROJ. NO. KA-1006-04 =
 STA. 1426+01.93 ON
 PROJ. NO. 472-76-245

STA. 2078+00.00
 657447.3900 N
 655525.6876 E

SW Cor. Sec. 15
 T28S, R1E=
 N 657452.95
 E 655532.67

Sec. Line = Survey Baseline
 N89°05'58.59"E 80+00

STA. 2074+69.80 @ 47th St. =
 STA. 850+00.00 @ Greenwood St.

MATCH LINE STA. 2074+00

2077+10.24
 End of Construction (Match Existing)
 End Cross Slope Transition

2075+35.00
 Begin Cross Slope Transition

35' Entrance Easement

To Remain Connect to Inlet 207 & 208

Sta. 2074+25.40 @ 47th St. Const.
 Curb Inlet Type I, 22.00' Rt.
 Connect to Existing 3.0 sq. ft. (RCPHE)(E)
 Connect to 211
 See Sht. No.29

Sta. 2074+88.50 @ 47th St. Const.
 Curb Inlet Type I, 22.00' Rt.
 Connect to Existing 5.0 sq. ft. (RCPHE)(E)
 See Sht. No.29

P.O.T. @ 47th St. Sta. 2078+07.0277, 5.5003' Lt.=
 Survey Baseline 47th St., Sta. 78+17.8174
 1. No Bar Set

Southfork Investments, LLC
 Lot 2
 Funston Addition

2075+32.18 Rt. @ 47th St.
 Const. Full Radius Drive
 See Entrance Details

+37.08 Exist. R/W =
 44.50' Rt. @ 47th St.
 +57.26 Exist. R/W =
 64.54' Rt. @ 47th St.

+56.43
 End Sidewalk
 MATCH EXISTING

STA. 2077+10.24
 End Construction
 MATCH EXISTING

Southfork Investments, LLC
 Lot 1
 Funston Addition

- P.O.T. Survey @ 47th St., Sta. 78+17.8174= Section Corner SW Cor. Sec. 15, T28S, R1E Found 3/4" IP in steel thimble Survey @ = Section line N=657452.9492 E=655532.6688
1. City benchmark disk on signal pole base 68.91' SE
 2. Center top nail on fire hydrant/PP 68.00' NE
 3. Chiseled "4" on sidewalk 72.06' SW
 4. Mag nail in conc. joint 1' W. of signal pole 70.67' NW

N 657417.41
 E 655634.04

Hydraulic Sidewalk @ 50' W

Sec. Line = Survey Baseline
 N89°05'58.59"E 80+00

SW Cor. Sec. 15
 T28S, R1E=
 N 657452.95
 E 655532.67

STA. 2077+10.24
 End Construction
 MATCH EXISTING

Southfork Investments, LLC
 Lot 1
 Funston Addition

2075+32.18 Rt. @ 47th St.
 Const. Full Radius Drive
 See Entrance Details

+37.08 Exist. R/W =
 44.50' Rt. @ 47th St.
 +57.26 Exist. R/W =
 64.54' Rt. @ 47th St.

+56.43
 End Sidewalk
 MATCH EXISTING

STA. 2077+10.24
 End Construction
 MATCH EXISTING

Southfork Investments, LLC
 Lot 1
 Funston Addition

- P.O.T. Survey @ 47th St., Sta. 78+17.8174= Section Corner SW Cor. Sec. 15, T28S, R1E Found 3/4" IP in steel thimble Survey @ = Section line N=657452.9492 E=655532.6688
1. City benchmark disk on signal pole base 68.91' SE
 2. Center top nail on fire hydrant/PP 68.00' NE
 3. Chiseled "4" on sidewalk 72.06' SW
 4. Mag nail in conc. joint 1' W. of signal pole 70.67' NW

N 657417.41
 E 655634.04

Hydraulic Sidewalk @ 50' W

Sec. Line = Survey Baseline
 N89°05'58.59"E 80+00

SW Cor. Sec. 15
 T28S, R1E=
 N 657452.95
 E 655532.67

STA. 2077+10.24
 End Construction
 MATCH EXISTING

Southfork Investments, LLC
 Lot 1
 Funston Addition

2075+32.18 Rt. @ 47th St.
 Const. Full Radius Drive
 See Entrance Details

+37.08 Exist. R/W =
 44.50' Rt. @ 47th St.
 +57.26 Exist. R/W =
 64.54' Rt. @ 47th St.

+56.43
 End Sidewalk
 MATCH EXISTING

STA. 2077+10.24
 End Construction
 MATCH EXISTING

Southfork Investments, LLC
 Lot 1
 Funston Addition

- P.O.T. Survey @ 47th St., Sta. 78+17.8174= Section Corner SW Cor. Sec. 15, T28S, R1E Found 3/4" IP in steel thimble Survey @ = Section line N=657452.9492 E=655532.6688
1. City benchmark disk on signal pole base 68.91' SE
 2. Center top nail on fire hydrant/PP 68.00' NE
 3. Chiseled "4" on sidewalk 72.06' SW
 4. Mag nail in conc. joint 1' W. of signal pole 70.67' NW

N 657417.41
 E 655634.04

Hydraulic Sidewalk @ 50' W

Sec. Line = Survey Baseline
 N89°05'58.59"E 80+00

SW Cor. Sec. 15
 T28S, R1E=
 N 657452.95
 E 655532.67

STA. 2077+10.24
 End Construction
 MATCH EXISTING

Southfork Investments, LLC
 Lot 1
 Funston Addition

2075+32.18 Rt. @ 47th St.
 Const. Full Radius Drive
 See Entrance Details

+37.08 Exist. R/W =
 44.50' Rt. @ 47th St.
 +57.26 Exist. R/W =
 64.54' Rt. @ 47th St.

+56.43
 End Sidewalk
 MATCH EXISTING

STA. 2077+10.24
 End Construction
 MATCH EXISTING

Southfork Investments, LLC
 Lot 1
 Funston Addition

- P.O.T. Survey @ 47th St., Sta. 78+17.8174= Section Corner SW Cor. Sec. 15, T28S, R1E Found 3/4" IP in steel thimble Survey @ = Section line N=657452.9492 E=655532.6688
1. City benchmark disk on signal pole base 68.91' SE
 2. Center top nail on fire hydrant/PP 68.00' NE
 3. Chiseled "4" on sidewalk 72.06' SW
 4. Mag nail in conc. joint 1' W. of signal pole 70.67' NW

N 657417.41
 E 655634.04

Hydraulic Sidewalk @ 50' W

Sec. Line = Survey Baseline
 N89°05'58.59"E 80+00

SW Cor. Sec. 15
 T28S, R1E=
 N 657452.95
 E 655532.67

STA. 2077+10.24
 End Construction
 MATCH EXISTING

Southfork Investments, LLC
 Lot 1
 Funston Addition

2075+32.18 Rt. @ 47th St.
 Const. Full Radius Drive
 See Entrance Details

+37.08 Exist. R/W =
 44.50' Rt. @ 47th St.
 +57.26 Exist. R/W =
 64.54' Rt. @ 47th St.

+56.43
 End Sidewalk
 MATCH EXISTING

STA. 2077+10.24
 End Construction
 MATCH EXISTING

Southfork Investments, LLC
 Lot 1
 Funston Addition

- P.O.T. Survey @ 47th St., Sta. 78+17.8174= Section Corner SW Cor. Sec. 15, T28S, R1E Found 3/4" IP in steel thimble Survey @ = Section line N=657452.9492 E=655532.6688
1. City benchmark disk on signal pole base 68.91' SE
 2. Center top nail on fire hydrant/PP 68.00' NE
 3. Chiseled "4" on sidewalk 72.06' SW
 4. Mag nail in conc. joint 1' W. of signal pole 70.67' NW

N 657417.41
 E 655634.04

Hydraulic Sidewalk @ 50' W

Sec. Line = Survey Baseline
 N89°05'58.59"E 80+00

SW Cor. Sec. 15
 T28S, R1E=
 N 657452.95
 E 655532.67

STA. 2077+10.24
 End Construction
 MATCH EXISTING

Southfork Investments, LLC
 Lot 1
 Funston Addition

2075+32.18 Rt. @ 47th St.
 Const. Full Radius Drive
 See Entrance Details

+37.08 Exist. R/W =
 44.50' Rt. @ 47th St.
 +57.26 Exist. R/W =
 64.54' Rt. @ 47th St.

+56.43
 End Sidewalk
 MATCH EXISTING

STA. 2077+10.24
 End Construction
 MATCH EXISTING

Southfork Investments, LLC
 Lot 1
 Funston Addition

- P.O.T. Survey @ 47th St., Sta. 78+17.8174= Section Corner SW Cor. Sec. 15, T28S, R1E Found 3/4" IP in steel thimble Survey @ = Section line N=657452.9492 E=655532.6688
1. City benchmark disk on signal pole base 68.91' SE
 2. Center top nail on fire hydrant/PP 68.00' NE
 3. Chiseled "4" on sidewalk 72.06' SW
 4. Mag nail in conc. joint 1' W. of signal pole 70.67' NW

N 657417.41
 E 655634.04

Hydraulic Sidewalk @ 50' W

Sec. Line = Survey Baseline
 N89°05'58.59"E 80+00

SW Cor. Sec. 15
 T28S, R1E=
 N 657452.95
 E 655532.67

STA. 2077+10.24
 End Construction
 MATCH EXISTING

Southfork Investments, LLC
 Lot 1
 Funston Addition

2075+32.18 Rt. @ 47th St.
 Const. Full Radius Drive
 See Entrance Details

+37.08 Exist. R/W =
 44.50' Rt. @ 47th St.
 +57.26 Exist. R/W =
 64.54' Rt. @ 47th St.

+56.43
 End Sidewalk
 MATCH EXISTING

STA. 2077+10.24
 End Construction
 MATCH EXISTING

Southfork Investments, LLC
 Lot 1
 Funston Addition

- P.O.T. Survey @ 47th St., Sta. 78+17.8174= Section Corner SW Cor. Sec. 15, T28S, R1E Found 3/4" IP in steel thimble Survey @ = Section line N=657452.9492 E=655532.6688
1. City benchmark disk on signal pole base 68.91' SE
 2. Center top nail on fire hydrant/PP 68.00' NE
 3. Chiseled "4" on sidewalk 72.06' SW
 4. Mag nail in conc. joint 1' W. of signal pole 70.67' NW

N 657417.41
 E 655634.04

Hydraulic Sidewalk @ 50' W

Sec. Line = Survey Baseline
 N89°05'58.59"E 80+00

SW Cor. Sec. 15
 T28S, R1E=
 N 657452.95
 E 655532.67

STA. 2077+10.24
 End Construction
 MATCH EXISTING

Southfork Investments, LLC
 Lot 1
 Funston Addition

2075+32.18 Rt. @ 47th St.
 Const. Full Radius Drive
 See Entrance Details

+37.08 Exist. R/W =
 44.50' Rt. @ 47th St.
 +57.26 Exist. R/W =
 64.54' Rt. @ 47th St.

+56.43
 End Sidewalk
 MATCH EXISTING

STA. 2077+10.24
 End Construction
 MATCH EXISTING

Southfork Investments, LLC
 Lot 1
 Funston Addition

- P.O.T. Survey @ 47th St., Sta. 78+17.8174= Section Corner SW Cor. Sec. 15, T28S, R1E Found 3/4" IP in steel thimble Survey @ = Section line N=657452.9492 E=655532.6688
1. City benchmark disk on signal pole base 68.91' SE
 2. Center top nail on fire hydrant/PP 68.00' NE
 3. Chiseled "4" on sidewalk 72.06' SW
 4. Mag nail in conc. joint 1' W. of signal pole 70.67' NW

N 657417.41
 E 655634.04

Hydraulic Sidewalk @ 50' W

Sec. Line = Survey Baseline
 N89°05'58.59"E 80+00

SW Cor. Sec. 15
 T28S, R1E=
 N 657452.95
 E 655532.67

STA. 2077+10.24
 End Construction
 MATCH EXISTING

Southfork Investments, LLC
 Lot 1
 Funston Addition

2075+32.18 Rt. @ 47th St.
 Const. Full Radius Drive
 See Entrance Details

+37.08 Exist. R/W =
 44.50' Rt. @ 47th St.
 +57.26 Exist. R/W =
 64.54' Rt. @ 47th St.

+56.43
 End Sidewalk
 MATCH EXISTING

STA. 2077+10.24
 End Construction
 MATCH EXISTING

Southfork Investments, LLC
 Lot 1
 Funston Addition

- P.O.T. Survey @ 47th St., Sta. 78+17.8174= Section Corner SW Cor. Sec. 15, T28S, R1E Found 3/4" IP in steel thimble Survey @ = Section line N=657452.9492 E=655532.6688
1. City benchmark disk on signal pole base 68.91' SE
 2. Center top nail on fire hydrant/PP 68.00' NE
 3. Chiseled "4" on sidewalk 72.06' SW
 4. Mag nail in conc. joint 1' W. of signal pole 70.67' NW

N 657417.41
 E 655634.04

Hydraulic Sidewalk @ 50' W

Sec. Line = Survey Baseline
 N89°05'58.59"E 80+00

SW Cor. Sec. 15
 T28S, R1E=
 N 657452.95
 E 655532.67

STA. 2077+10.24
 End Construction
 MATCH EXISTING

Southfork Investments, LLC
 Lot 1
 Funston Addition

2075+32.18 Rt. @ 47th St.
 Const. Full Radius Drive
 See Entrance Details

+37.08 Exist. R/W =
 44.50' Rt. @ 47th St.
 +57.26 Exist. R/W =
 64.54' Rt. @ 47th St.

+56.43
 End Sidewalk
 MATCH EXISTING

STA. 2077+10.24
 End Construction
 MATCH EXISTING

Southfork Investments, LLC
 Lot 1
 Funston Addition

- P.O.T. Survey @ 47th St., Sta. 78+17.8174= Section Corner SW Cor. Sec. 15, T28S, R1E Found 3/4" IP in steel thimble Survey @ = Section line N=657452.9492 E=655532.6688
1. City benchmark disk on signal pole base 68.91' SE
 2. Center top nail on fire hydrant/PP 68.00' NE
 3. Chiseled "4" on sidewalk 72.06' SW
 4. Mag nail in conc. joint 1' W. of signal pole 70.67' NW

N 657417.41
 E 655634.04

Hydraulic Sidewalk @ 50' W

Sec. Line = Survey Baseline
 N89°05'58.59"E 80+00

SW Cor. Sec. 15
 T28S, R1E=
 N 657452.95
 E 655532.67