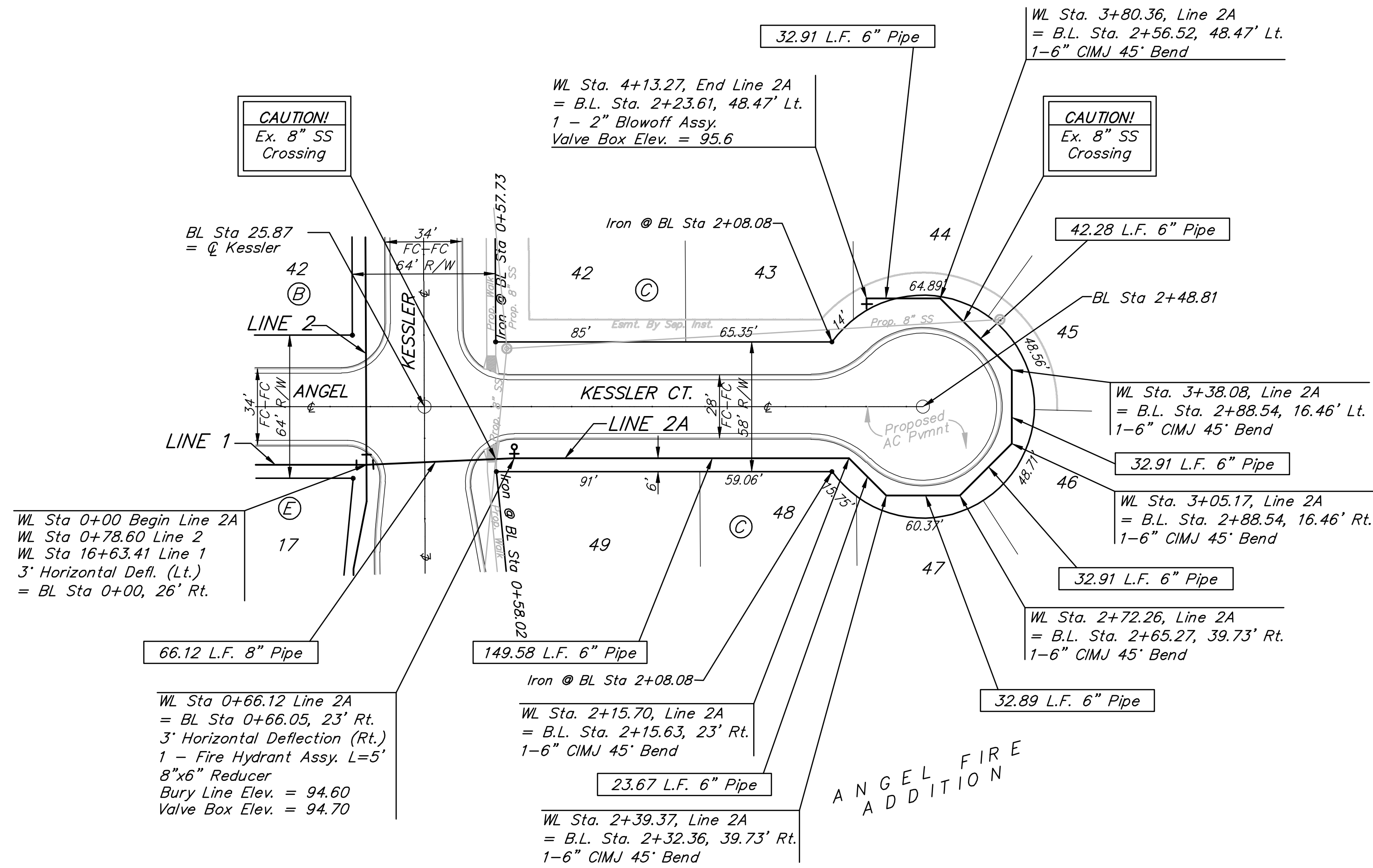
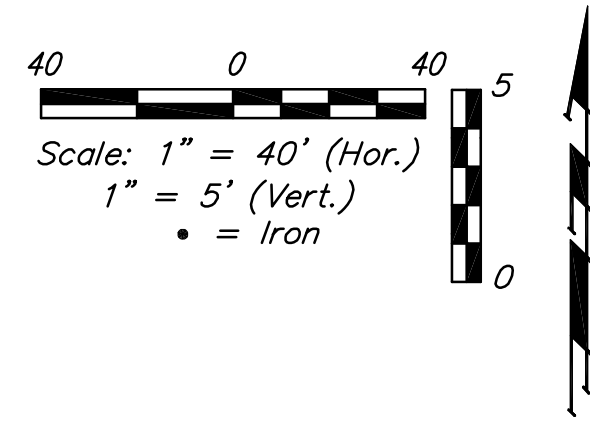


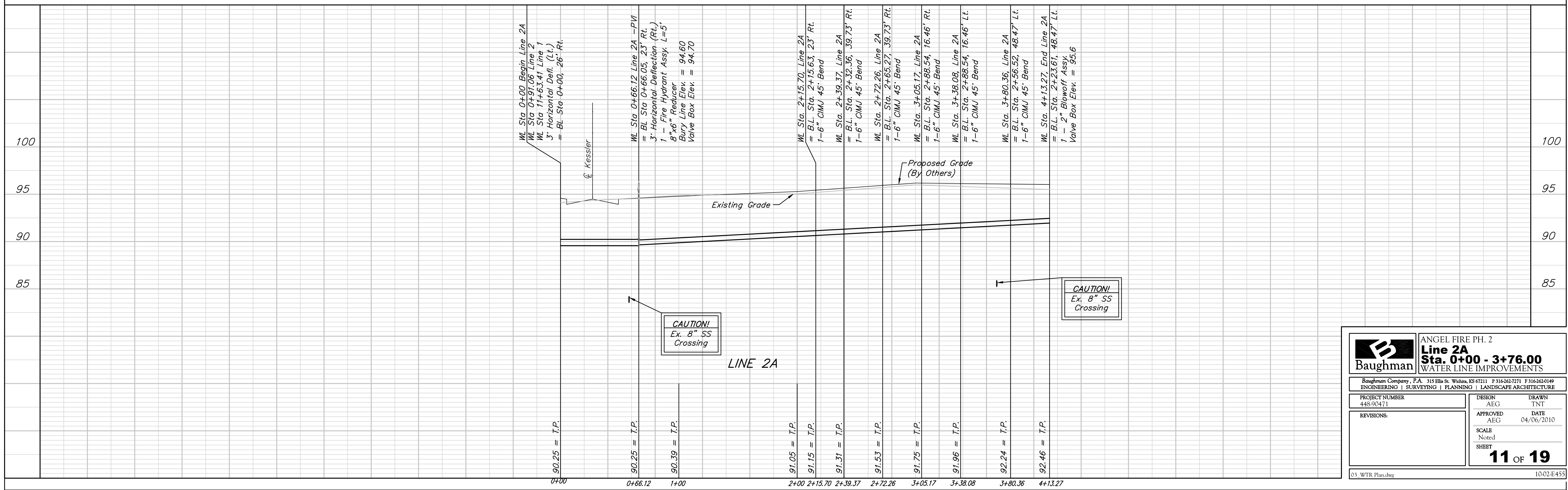
BENCHMARKS:
 C.O.W. Disc SE Corner West St. & 47th S.
 Elev. = 92.29 (City Datum)

RR Spike in N. face of power pole, SE
 Corner 47th So. & Kessler
 Elev. = 91.74 (City Datum)

"□" Cut in Top of Curb Adjacent to the
 NW Corner Lot 27, Block C.
 Elev. = 93.57 (City Datum)



Note: Protective Fill to be
 Placed and Compacted per
 City Specs Prior to Water
 Line Installation.



		ANGEL FIRE PH. 2	
		Line 2A Sta. 0+00 - 3+76.00 WATER LINE IMPROVEMENTS	
<small>Baughman Company, P.A. 315 Ella St. Wichita, KS 67211 P 316-262-7271 F 316-262-0149 ENGINEERING SURVEYING PLANNING LANDSCAPE ARCHITECTURE</small>			
PROJECT NUMBER 448-30471	DESIGN AEG	DRAWN TNT	
REVISIONS:	APPROVED AEG	DATE 04/06/2010	
	SCALE Noted	SHEET	
			11 OF 19
03_WTR Plan.dwg			10-02-E-455