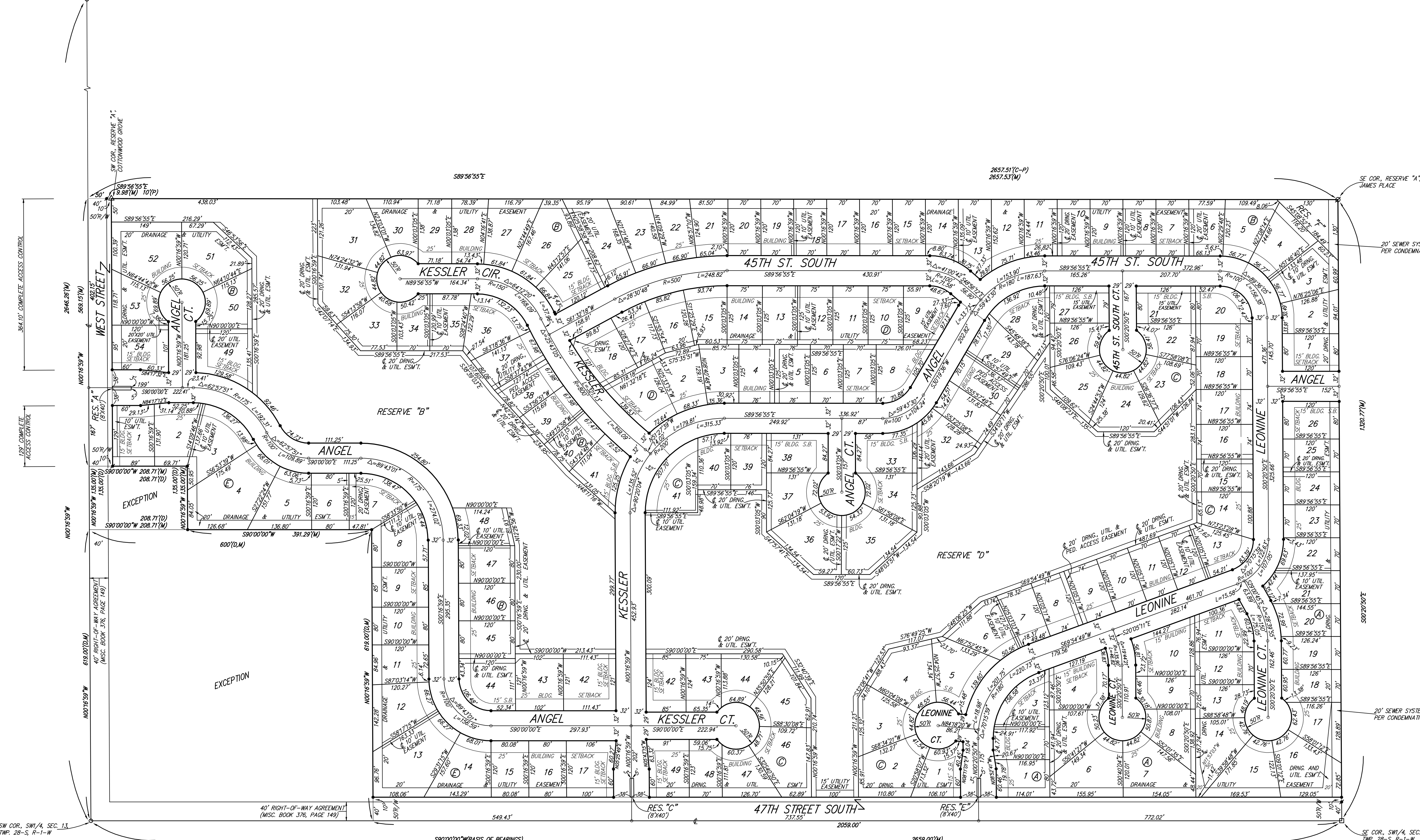


# ANGEL FIRE ADDITION WICHITA, SEDGWICK COUNTY, KANSAS

NW COR., SW 1/4, SEC. 13,  
TWP. 28-S, R-1-W



LOT	BLOCK	ELEVATION
3-5	B	95.0
31-52	B	94.0
2-18	C	94.0
23-26	C	94.0
28-32	C	94.0
34-37	C	94.0
39-46	C	94.0

- = #4 REBAR W/ "BAUGHMAN" CAP (SET)
- = #4 REBAR W/ "BAUGHMAN" CAP (FOUND)
- = #4 REBAR IN THIMBLE (FOUND)
- △ = #4 REBAR W/ "KREC" CAP (FOUND)
- = 3/4" IRON W/ "KREC" CAP (FOUND)
- = 3/4" IRON IN THIMBLE (FOUND)

(M) = MEASURED  
(P) = PLATED  
(D) = DESCRIBED  
(C-P) = CALCULATED PER PLATED INFO.

BENCHMARK:  
CITY OF WICHITA BENCHMARK DISC - SE COR OF  
INTERSECTION OF 47TH ST. S. AND WEST STREET  
42.10' E. OF CENTERLINE  
51.00' S. OF CENTERLINE  
99.80' E. OF P.P. ON SW COR.  
23.80' S. OF P.P.  
ELEV. = 92.29 CITY DATUM

**NOTE:**  
A MASTER GRADING PLAN FOR DRAINAGE HAS BEEN DEVELOPED FOR THIS SUBDIVISION AND IS ON FILE WITH THE CITY OF WICHITA, KANSAS. ALL DRAINAGE EASEMENTS, RIGHTS-OF-WAY, OR RESERVES SHALL REMAIN AT ESTABLISHED GRADES OR AS MODIFIED WITH THE APPROVAL OF THE CITY ENGINEER OF THE CITY OF WICHITA, KANSAS. NO OBSTRUCTIONS WHICH IMPEDE THE FLOW OF THIS DRAINAGE SYSTEM SHALL BE ALLOWED.