

GENERAL NOTES:

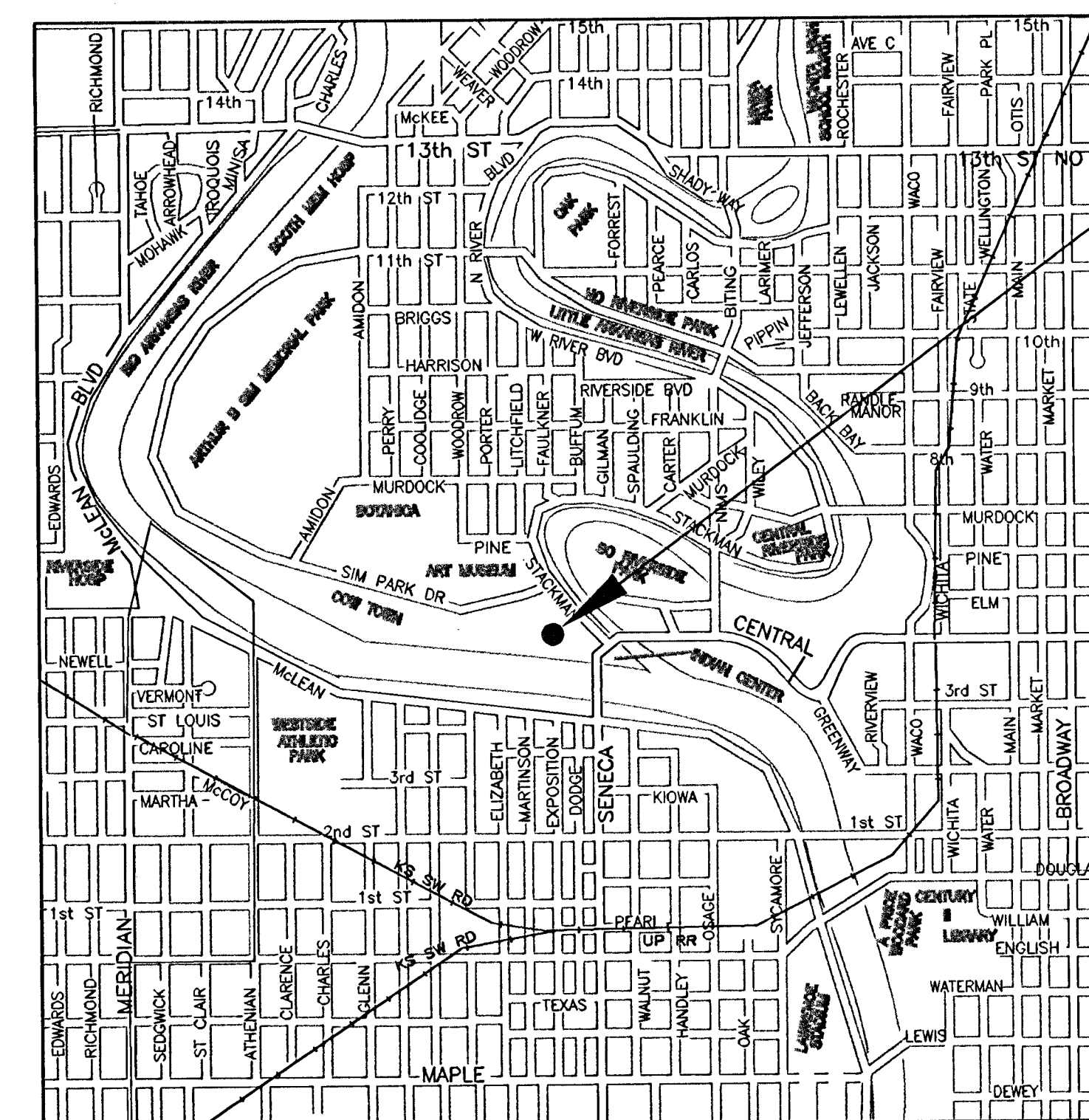
1. Utility service lines, poles, valve boxes, meters, etc. are to be adjusted as necessary by others prior to construction unless the plans specifically call for their adjustment by the Contractor or unless the plans specifically identify a utility to be adjusted by its owner during construction. Existing utilities and their location, as shown on the plans, represent the best information obtainable for design. The Contractor will be required to work around existing utilities within the right-of-way which do not conflict with proposed construction.
2. Contractor is solely responsible to notify and to make any necessary arrangements with utility companies for any needed adjustments of utility facilities prior to start of work.
3. Contractor will be required to provide as minimum advance notice of forty-eight (48) hours to utility companies prior to starting any excavation as follows:

Kansas One Call	687-2470
Southwestern Bell Telephone Company	1-316-571-2611
Cablevision	262-4270 or 263-2061
KPL Gas Service	283-7511
Kansas Gas and Electric	264-1141
City of Wichita Water Department	268-4908
City of Wichita Sewer Department	268-4071
ARKLA Gas Company	942-8350 or 283-8161
4. The Contractor shall be responsible for preserving property irons. The Contractor will be required to re-establish any property irons which are damaged or destroyed by his construction operations. Such irons shall be re-established by a licensed land surveyor or a licensed professional engineer in accordance with state laws.
5. Limits of earthwork shall match existing ground elevations at the right-of-way line unless otherwise noted on the plans. Where the new finished grade elevations do not match the existing ground elevations, the earthwork shall extend one foot beyond the right-of-way line and then sloped up or down using permissible slopes to match the existing ground surface.
6. The Contractor must examine the construction site prior to bidding and be satisfied as to the work shown for completion. After bids have been received, the Contractor shall not assert that there was a misunderstanding of the quantities of work or of the nature of the work to be completed.
7. All construction and materials, unless otherwise noted, to comply with City of Wichita specifications and standards.
8. Rubble Removal - Rubble from the removal of miscellaneous structures and excess excavation which is to be wasted shall be disposed of on sites to be provided by the Contractor. These sites shall be approved by the Engineer as to suitability, appearance and site location. Locations that, in the opinion of the Engineer will leave an unsightly appearance will not be approved. All disposal sites must be approved by the Kansas Department of Health and Environment. Material either stockpiled or disposed of in a flood plain will require a Kansas State Board of Agriculture permit. Any material dumped in waters of the United States or wetlands is subject to US Corps of Engineers permitting regulations. Any material buried or stockpiled beyond approved construction limits would require additional archeological investigations unless buried in a previously approved borrow location. The cost of disposing of rubble from the removal of miscellaneous structures and excess excavation, including loading and hauling shall be subsidiary to the other bid items.
9. Trees and shrubs in public right-of-way which are in direct conflict with proposed new construction shall be removed by the Contractor with the Engineer's approval. Trees and shrubs which are not in direct conflict with proposed new construction shall be saved and protected from damage. This cost is subsidiary to other bid items.
10. All entrance and cross road pipe within the project limits shall be removed by the Contractor unless otherwise noted on the plans. Removal of such pipes shall conform to the applicable section of the standard specifications. This cost is subsidiary to other bid items.
11. A saw cut of at least one-half the depth of existing surface courses or one-fourth the depth of the existing total pavement thickness shall be provided where proposed abuts an existing surface course or pavement removal. Sawed joint to facilitate removal within three (3) feet of existing joints will not be permitted and for such instances the limits of removal shall extend to the existing joint. Such saw cuts will not be paid for directly and this cost shall be considered as subsidiary to the other bid items.
12. Street to be closed during construction except for temporary access coordinated with the adjacent properties. The Contractor shall use construction methods which shall minimize inconvenience to residents in the project area. Contractor will be required to make special access provisions for any handicapped residents within the project area whose normal access would otherwise be impaired.
13. Sealent: PECORA Aluminum Stone Urexpam NR-200 Urethane Sealent or approved by Engineer.

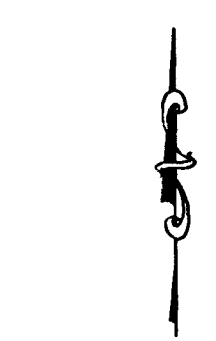
**PARKING LOT ON TOP OF
10.6 MILLION GALLON RESERVOIR
MAY 1997**

**CITY OF WICHITA, KANSAS
M. E. LINDEBAK, P.E. - CITY ENGINEER**

**472-83026
INDEX CODE: 633508**

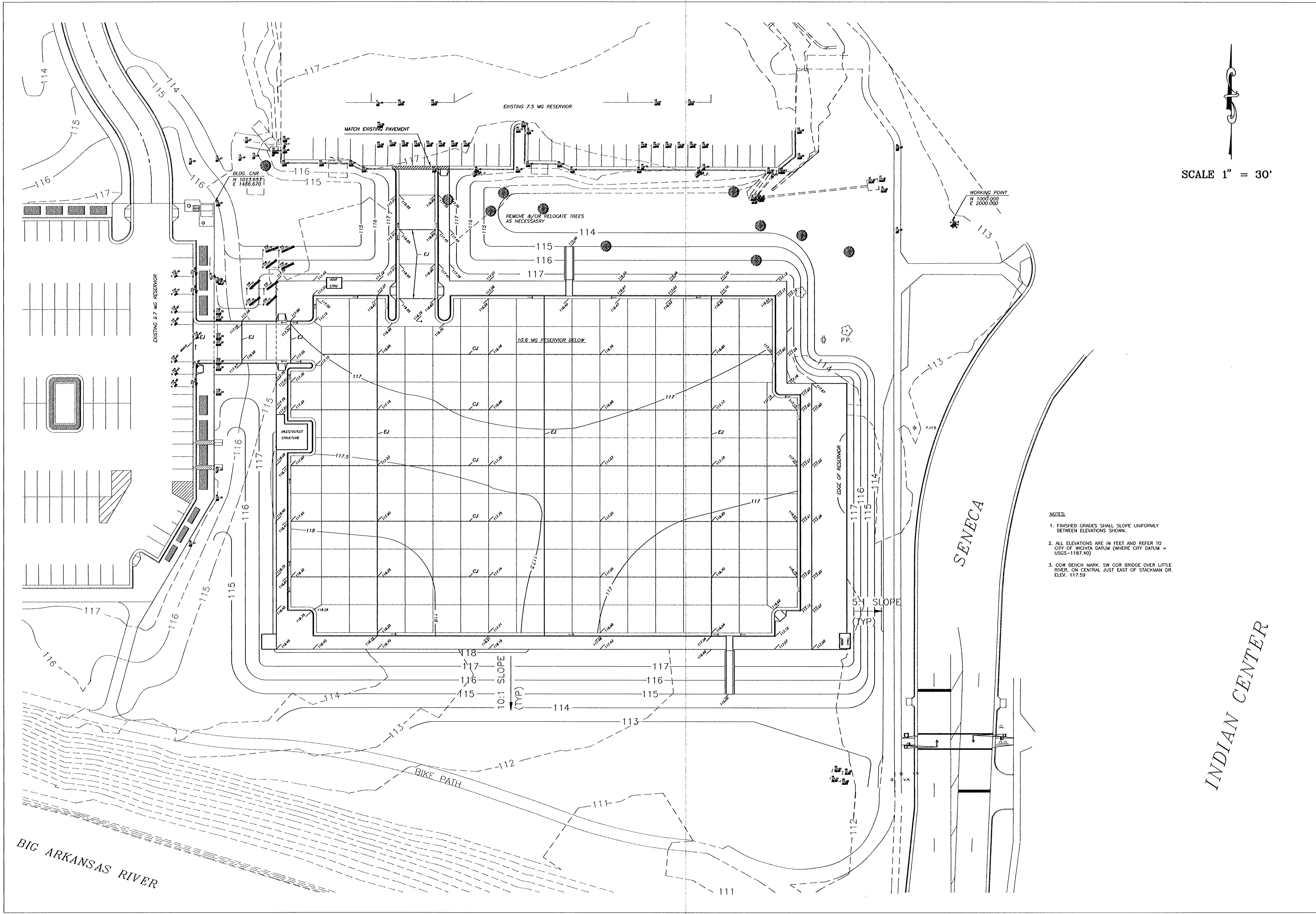


PROJECT LOCATION



INDEX OF SHEETS

- SHEET G-1 - PAVING PLAN
- SHEET G-2 - GRADING PLAN
- SHEET D-1 - PAVING DETAIL
- SHEET D-2 - BRICK SIDEWALK DETAIL
- SHEET D-3 - DROP INLET DETAIL



SCALE 1" = 30'

- NOTES
1. FINISHED GRADES SHALL SLOPE UNIFORMLY BETWEEN ELEVATIONS SHOWN.
 2. ALL ELEVATIONS ARE IN FEET AND REFER TO CITY OF WICHITA DATUM (WHERE CITY DATUM = USGS-1187.40)
 3. C&W BENCH MARK: SW COR BRIDGE OVER LITTLE RIVER, ON CENTRAL JUST EAST OF STACKMAN DR. ELEV. 117.59

PARKING LOT on 10.6 MG RESERVOIR - GRADING PLAN
 near Central Avenue and Stackman Drive
 PROJECT NO.: 472-XXXXX
 INDEX NO.: XXXXXX

Revision	Date

CITY OF WICHITA
 Department of Public Works
 Engineering Division - 7th Floor City Hall
 465 N. Main St., Wichita, Kansas 67202
 Director of Public Works - Stephen Lackey, P.E.
 City Engineer - Michael E. Lindbeck, P.E.

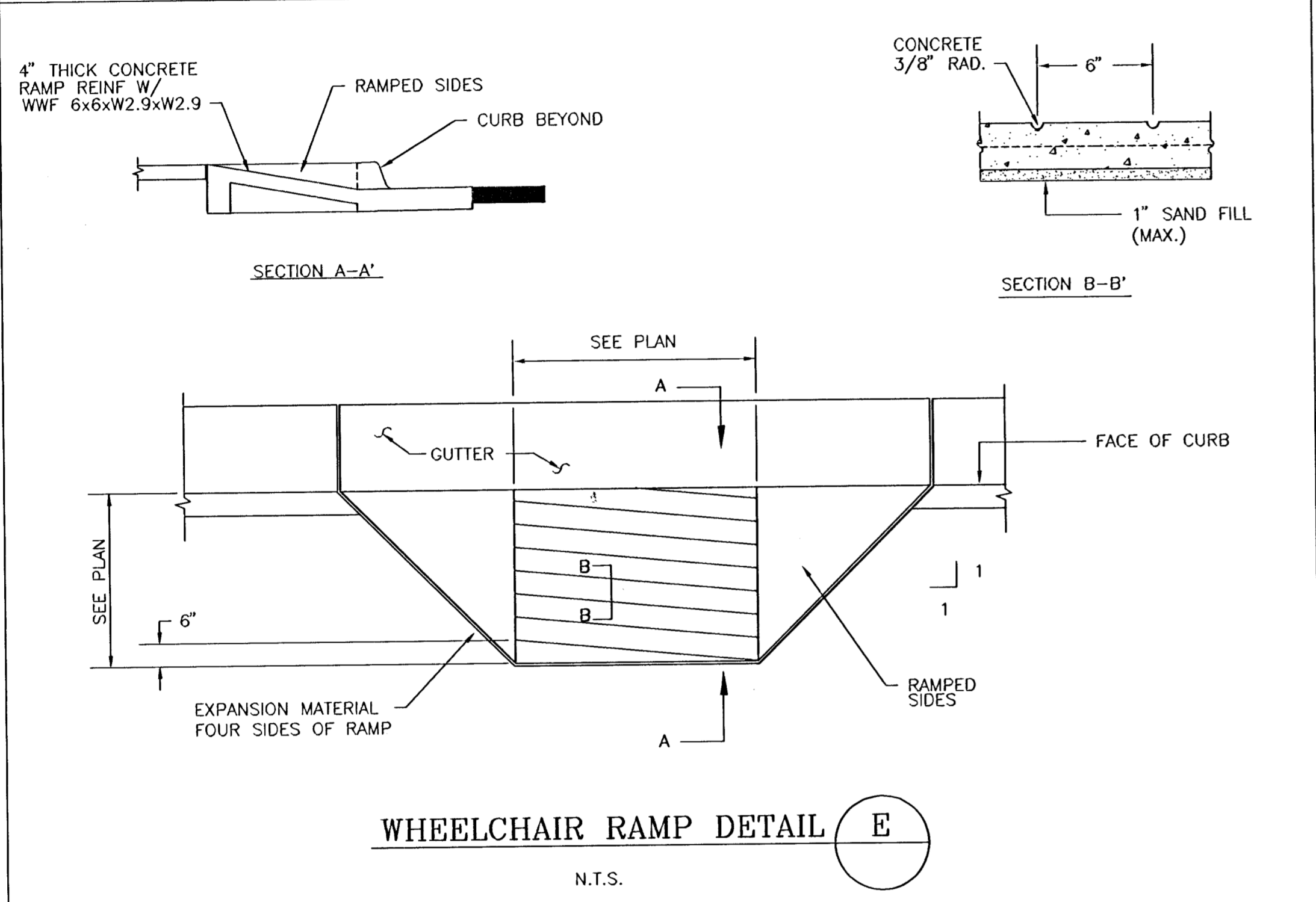
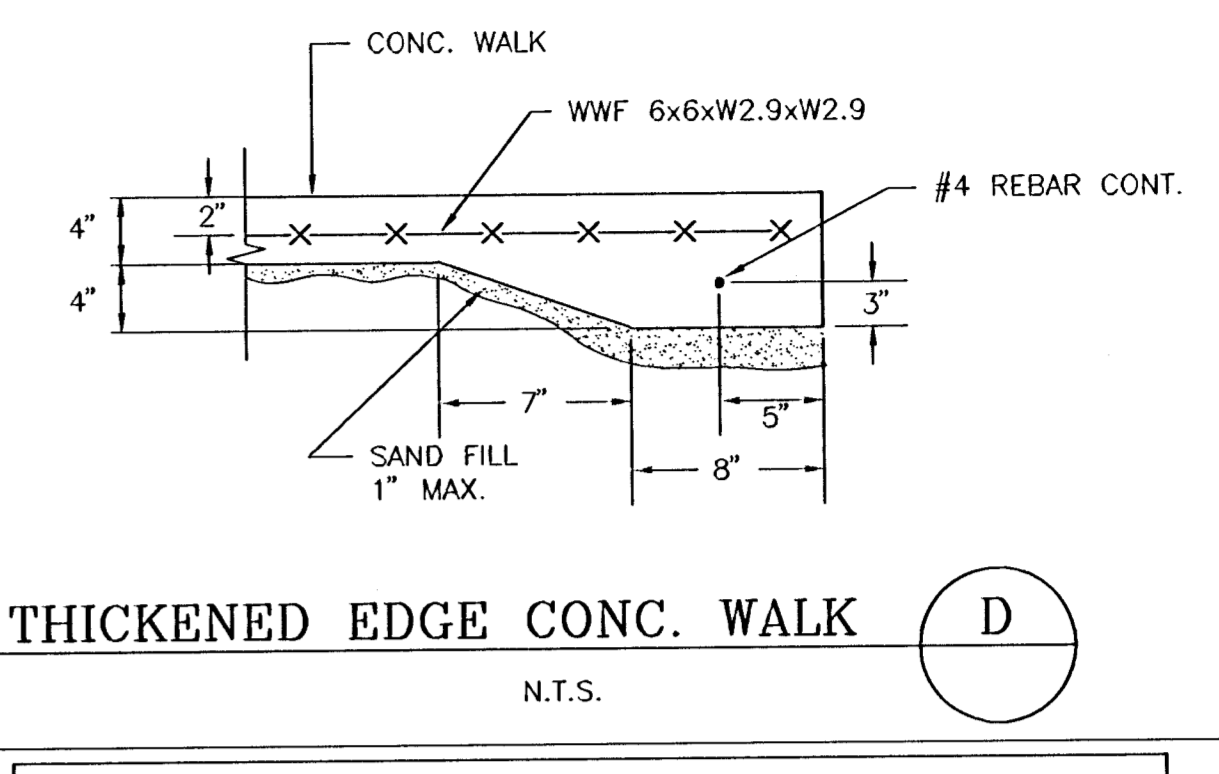
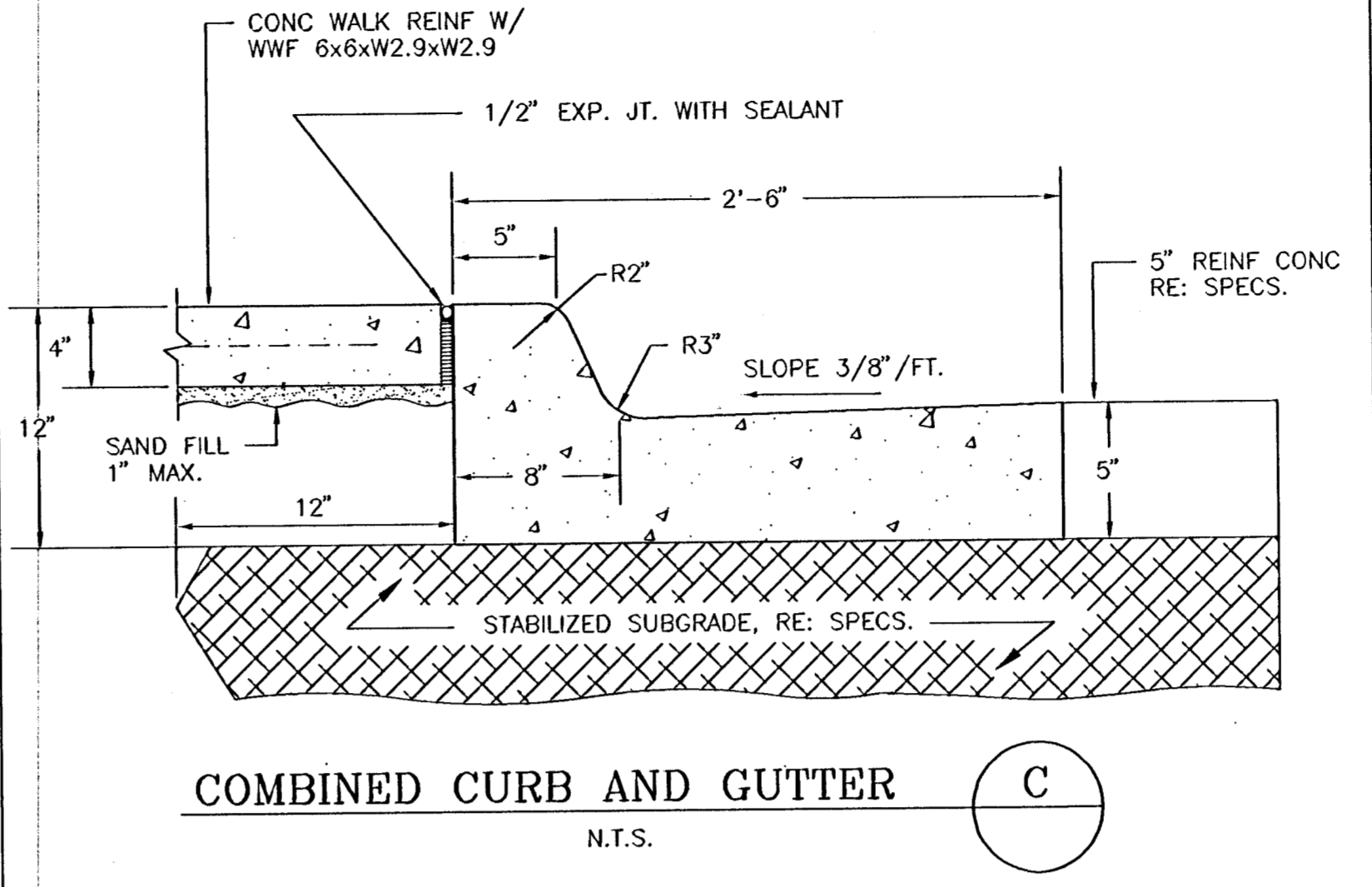
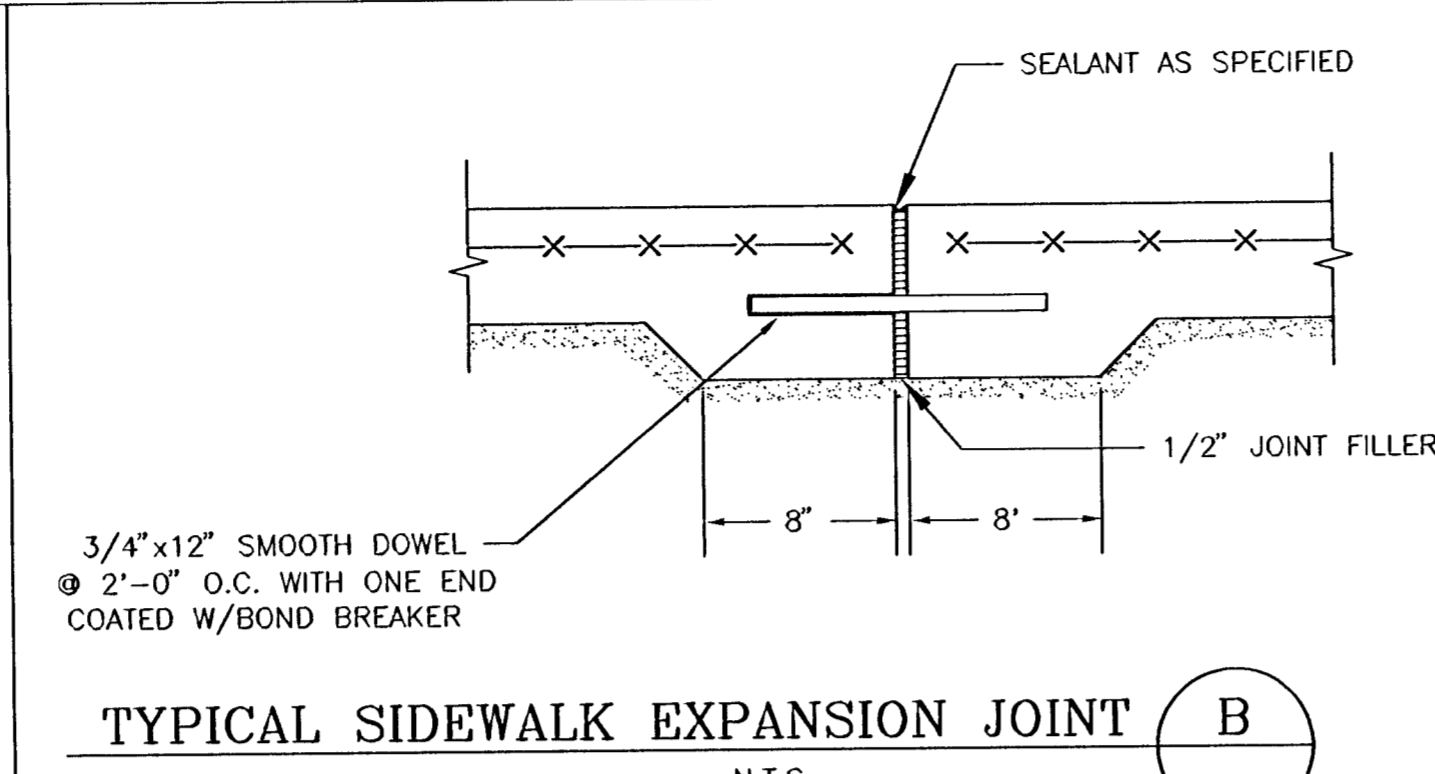
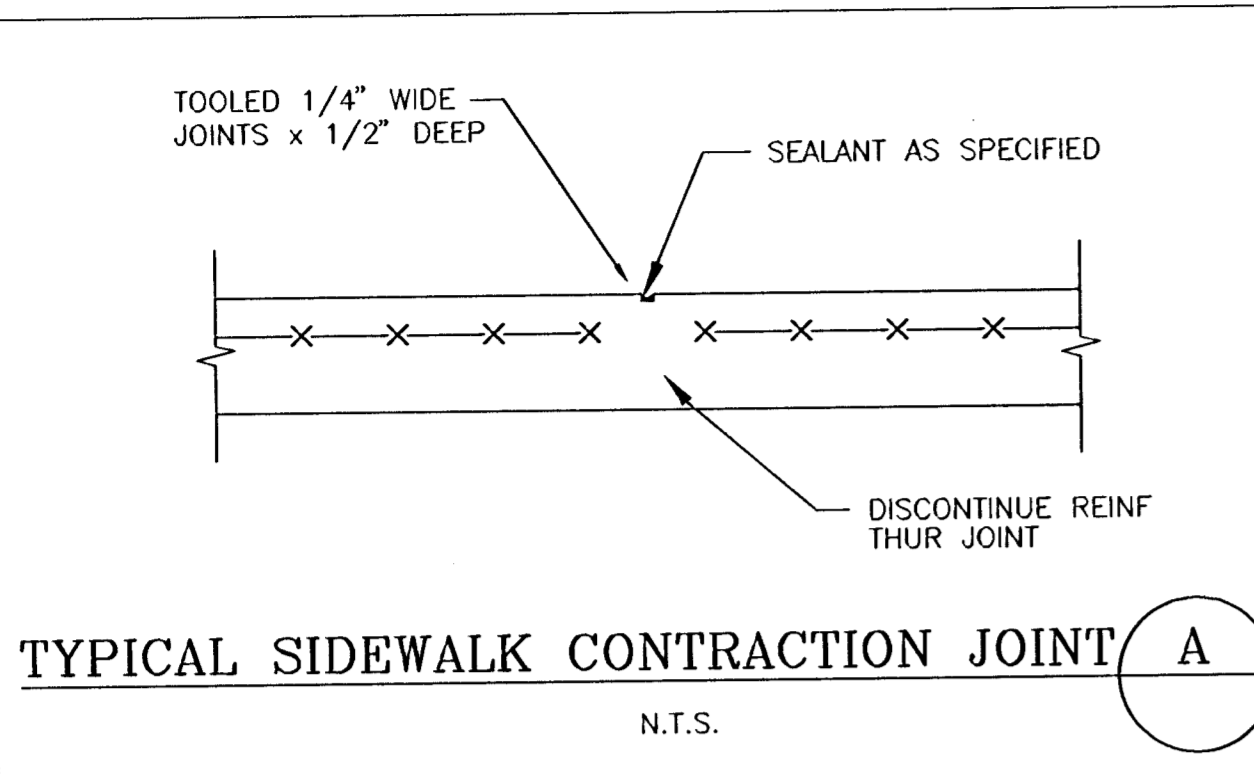
Scale:
 1" = 30'
 Date:
 OCT 1997
 Drawn By:
 SAC
 Approved By:
 LS
 SHEET NO.
G-2

Revision

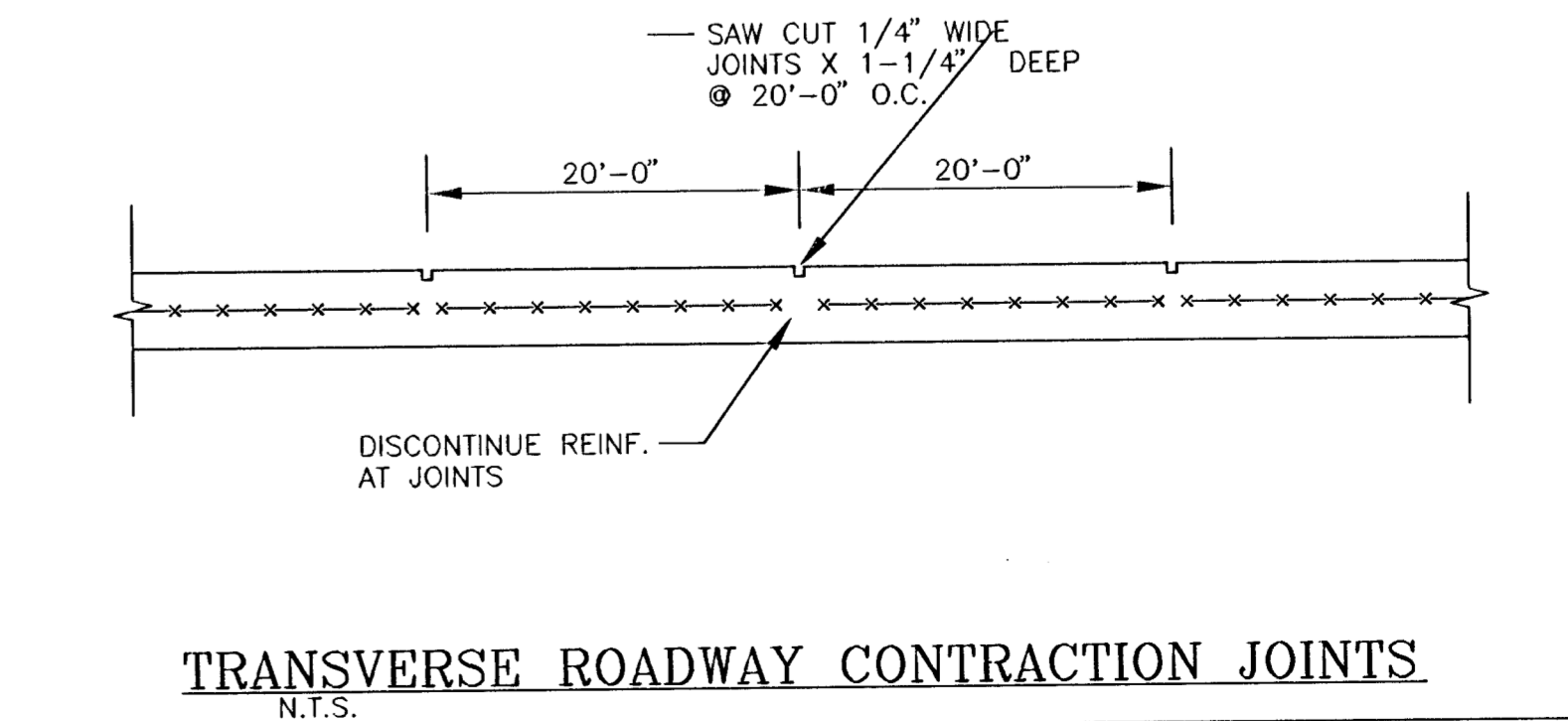
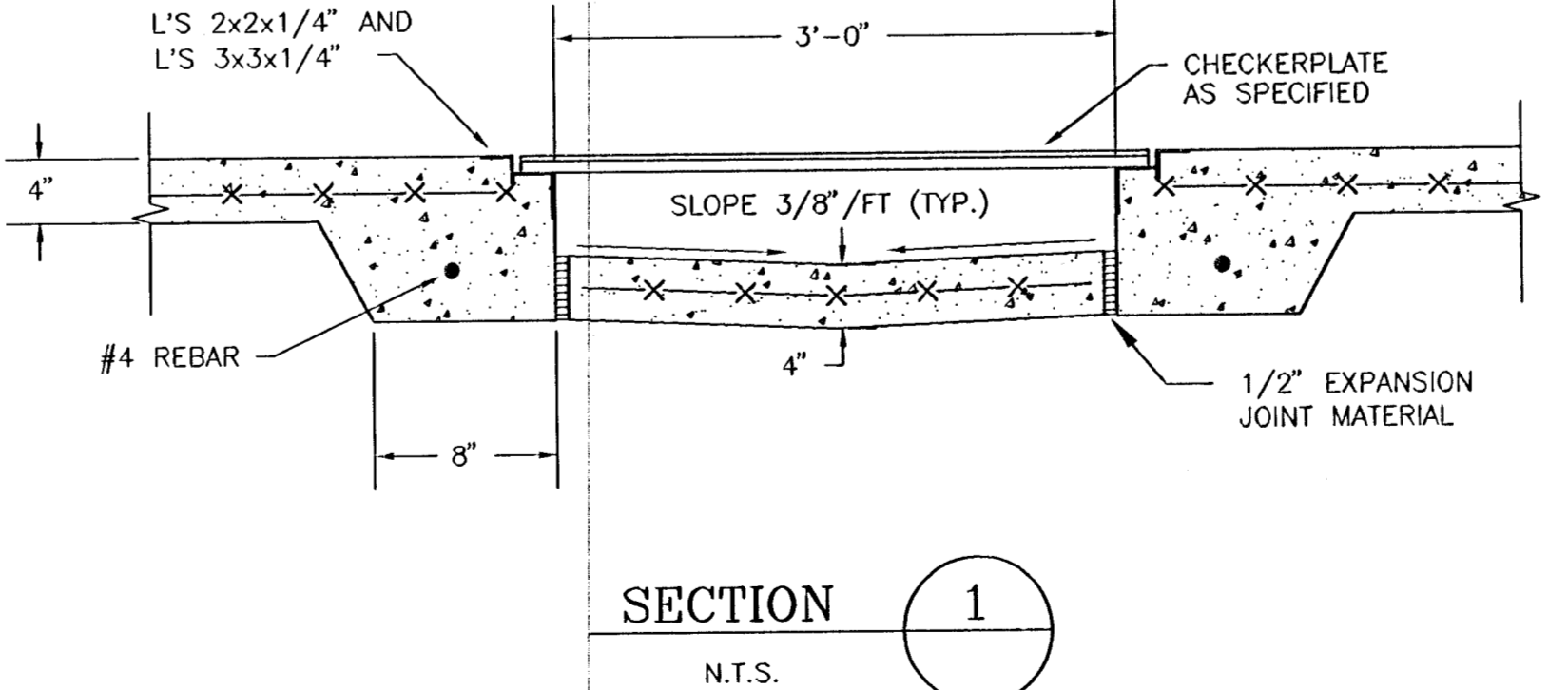
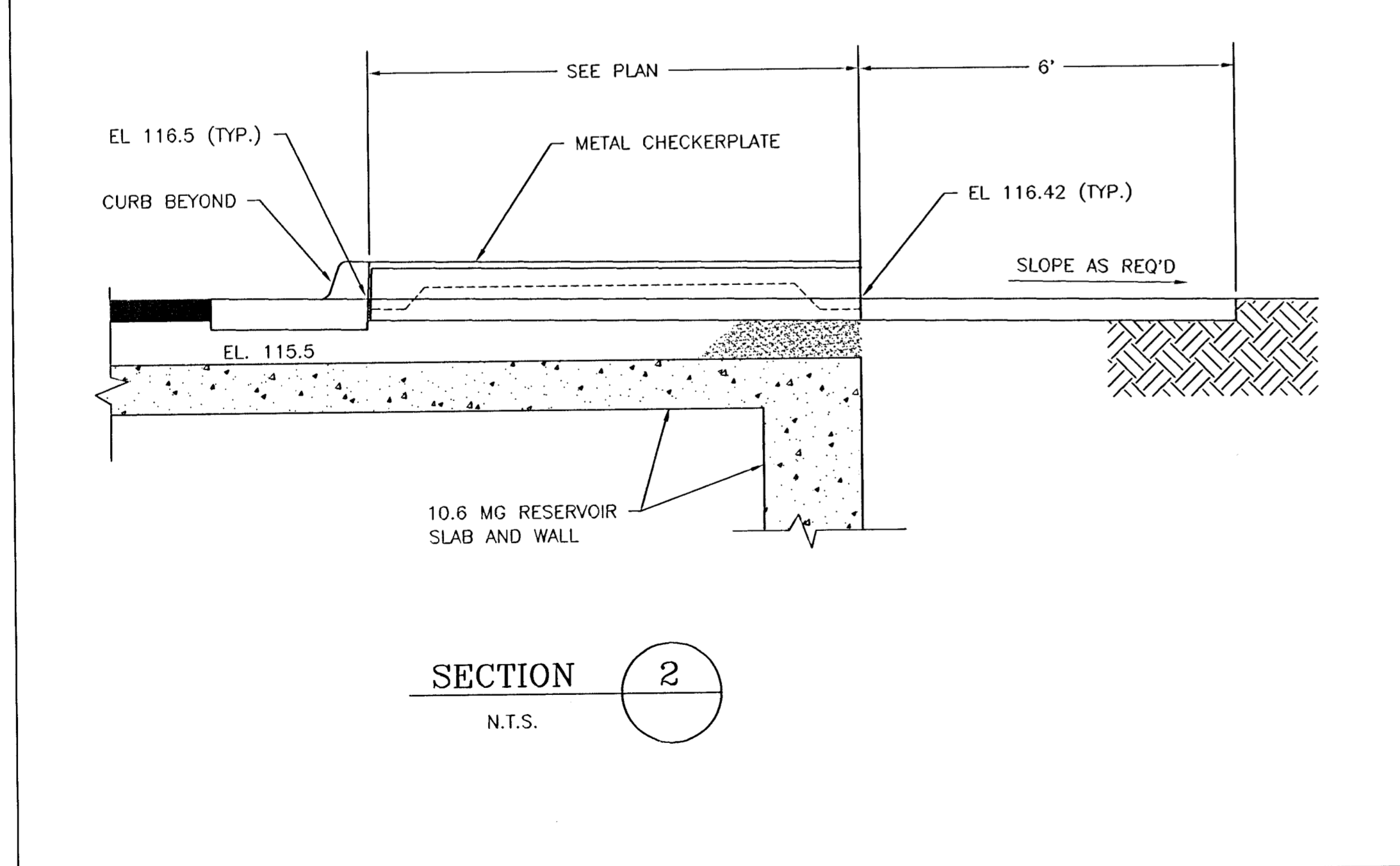
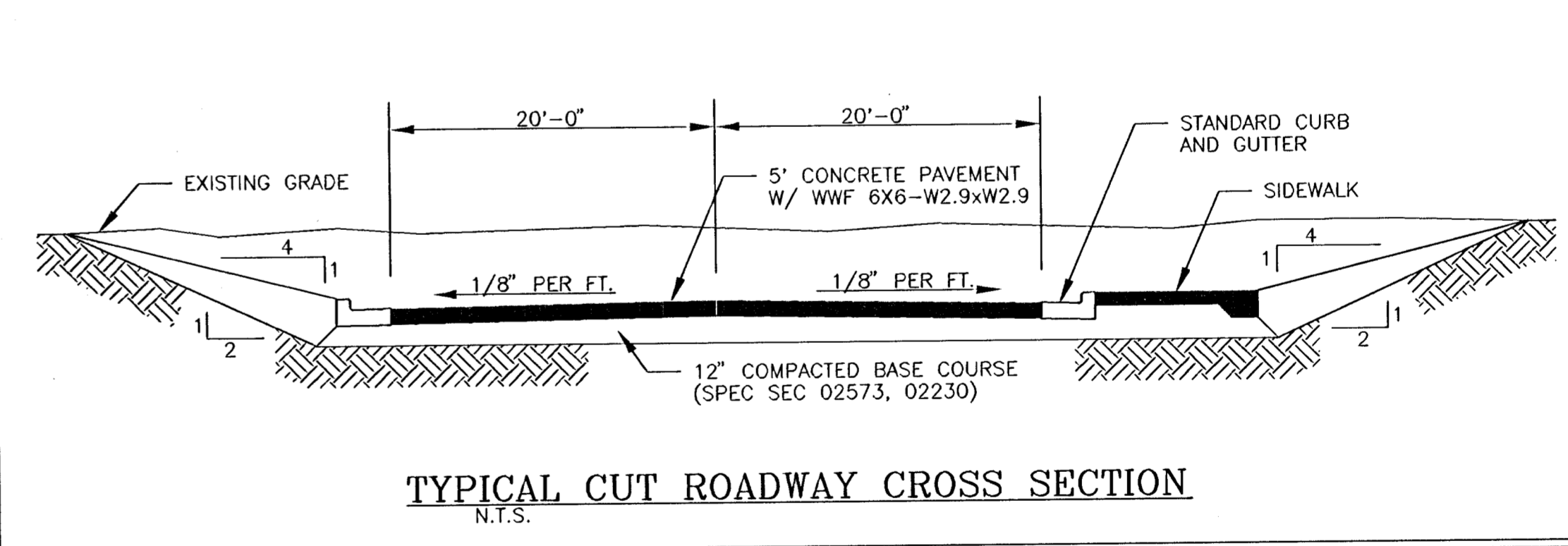
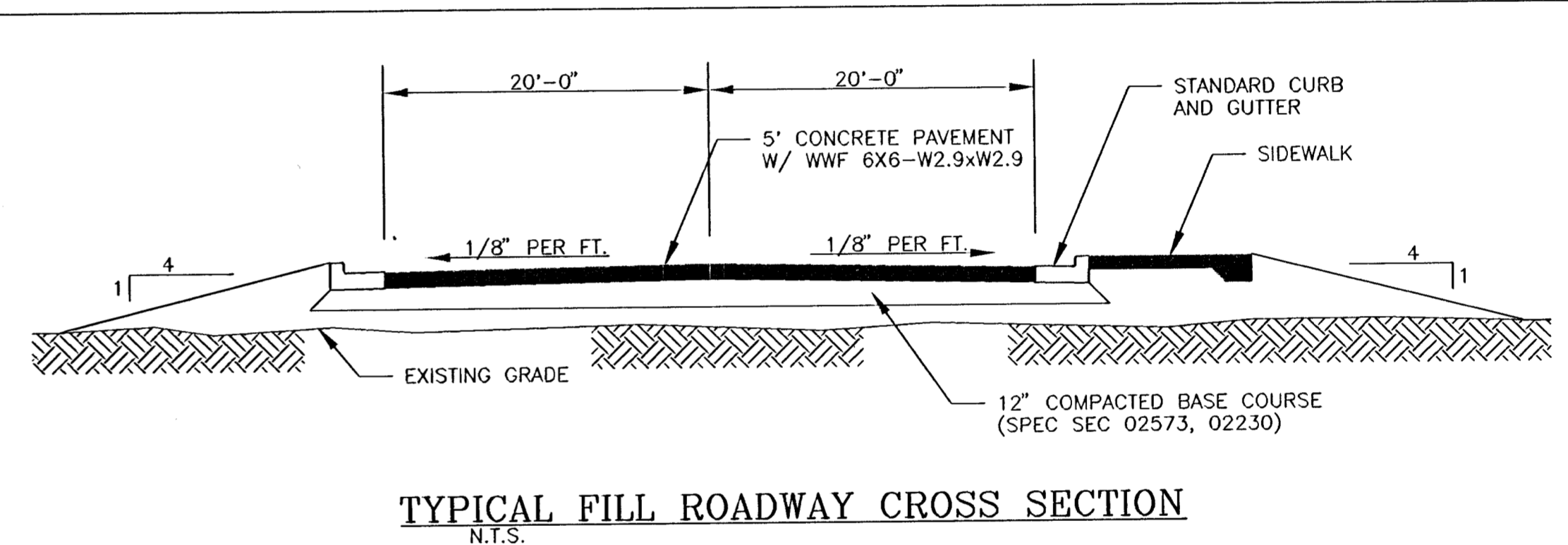
Date

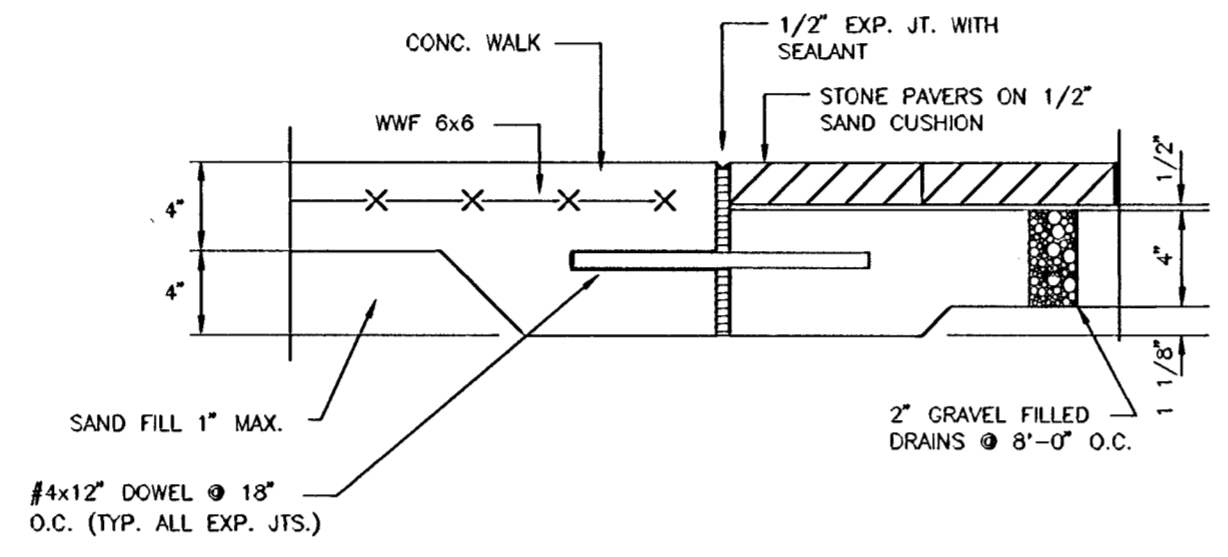
CITY OF WICHITA
 Department of Public Works
 Engineering Division
 455 N. Main St., Wichita, Kansas 67202
 Director of Public Works - Stephen Lackey, P.E.
 City Engineer - Michael E. Lindebak, P.E.

Scale: As Noted
 Date: MAY 1997
 Drawn By: SAC
 Approved By: SAC

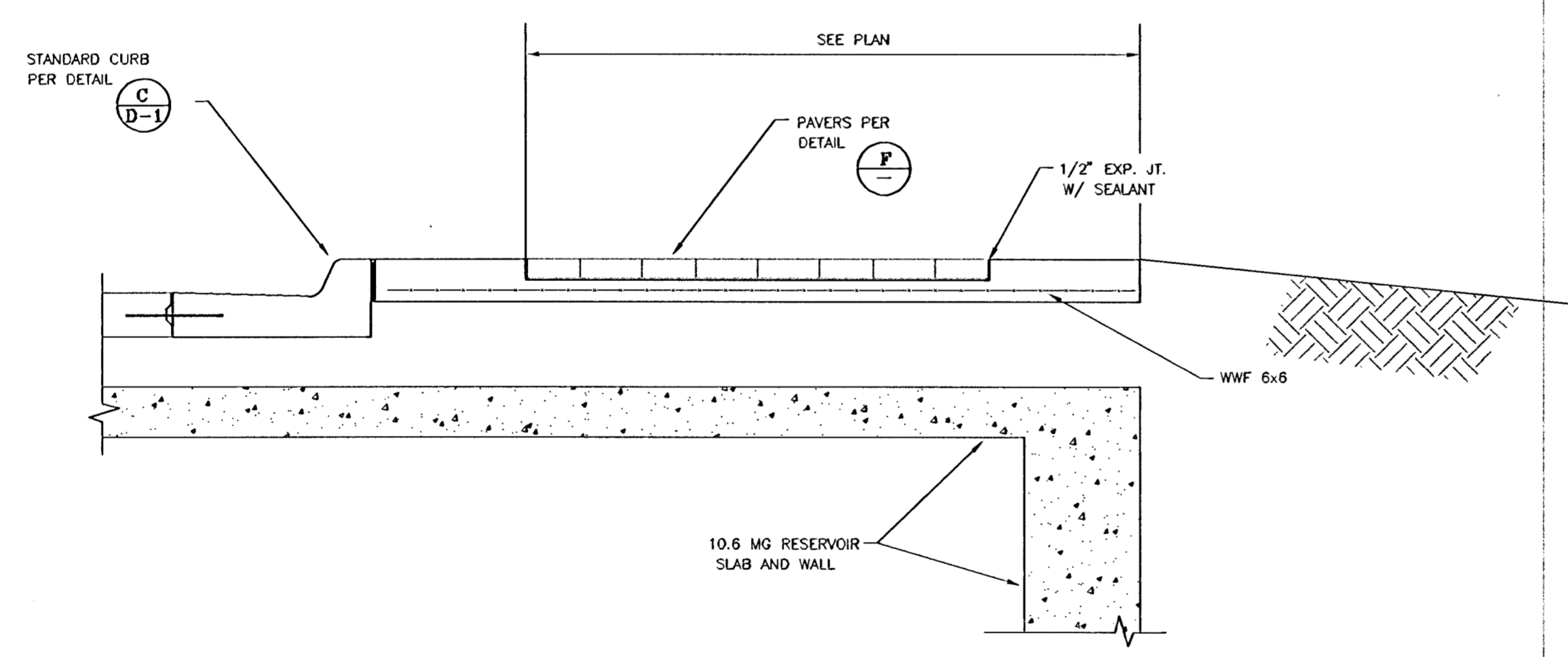


SEALANT:
 PECORA
 Aluminum Stone Urexpam
 NR-200
 Uretane Sealant





MODULAR PAVER PAVING DETAIL (F)
 N.T.S.



COMBINED CURB AND GUTTER (3 G-1)
 N.T.S.

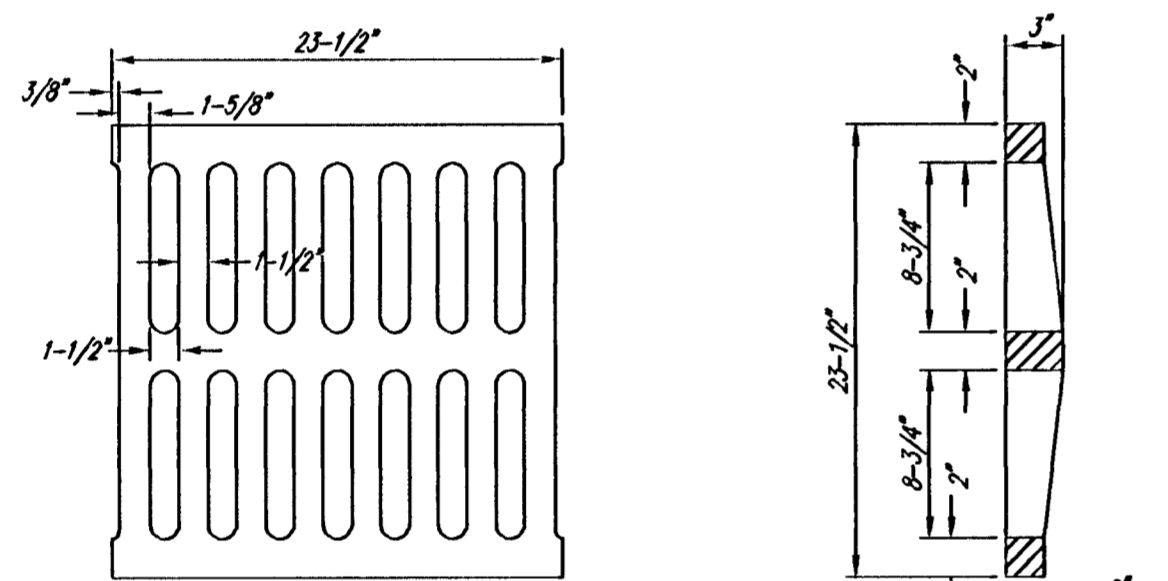
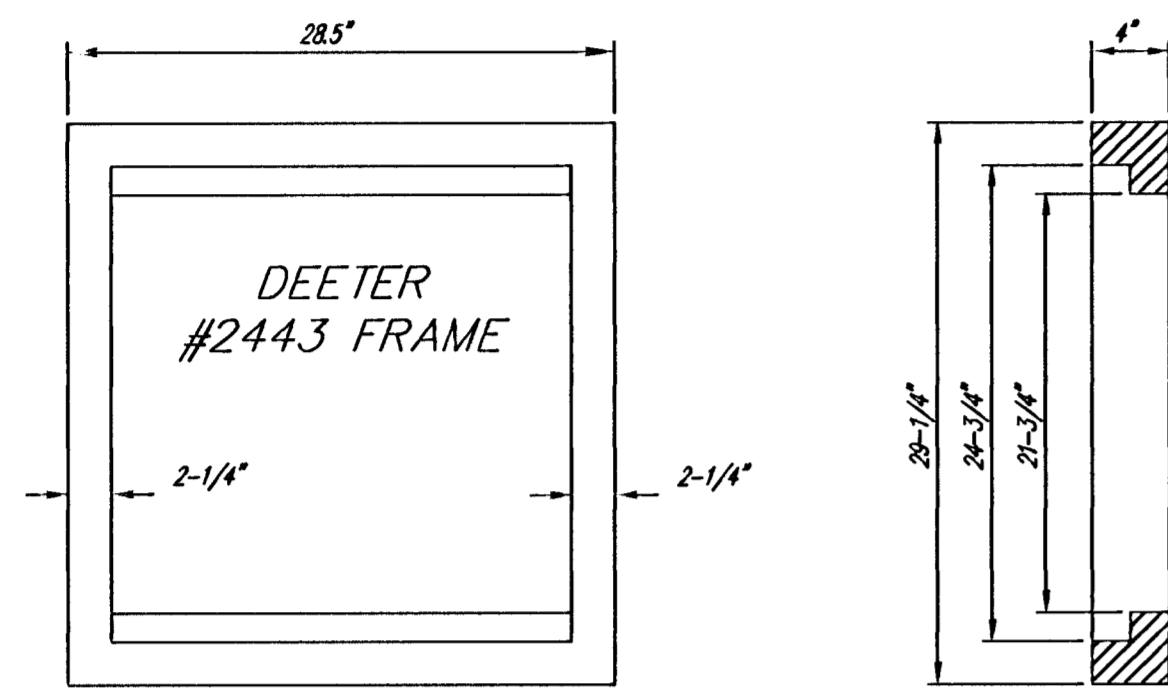
PARKING LOT on 10.6 MG RESERVOIR - DETAIL SHEET
 near Central Avenue and Stackman Drive
 PROJECT NO.: 472-XXXX
 INDEX NO.: XXXXXX

Date	Revision

CITY of WICHITA
 Department of Public Works
 Engineering Division - 7th Floor City Hall
 455 N. Main St., Wichita, Kansas 67202
 Director of Public Works - Stephen L. Jolley, P.E.
 City Engineer - Michael E. Lindoak, P.E.

Scale: As Noted
 Date: MAY 1997
 Drawn By: SAC
 Approved By: SAC

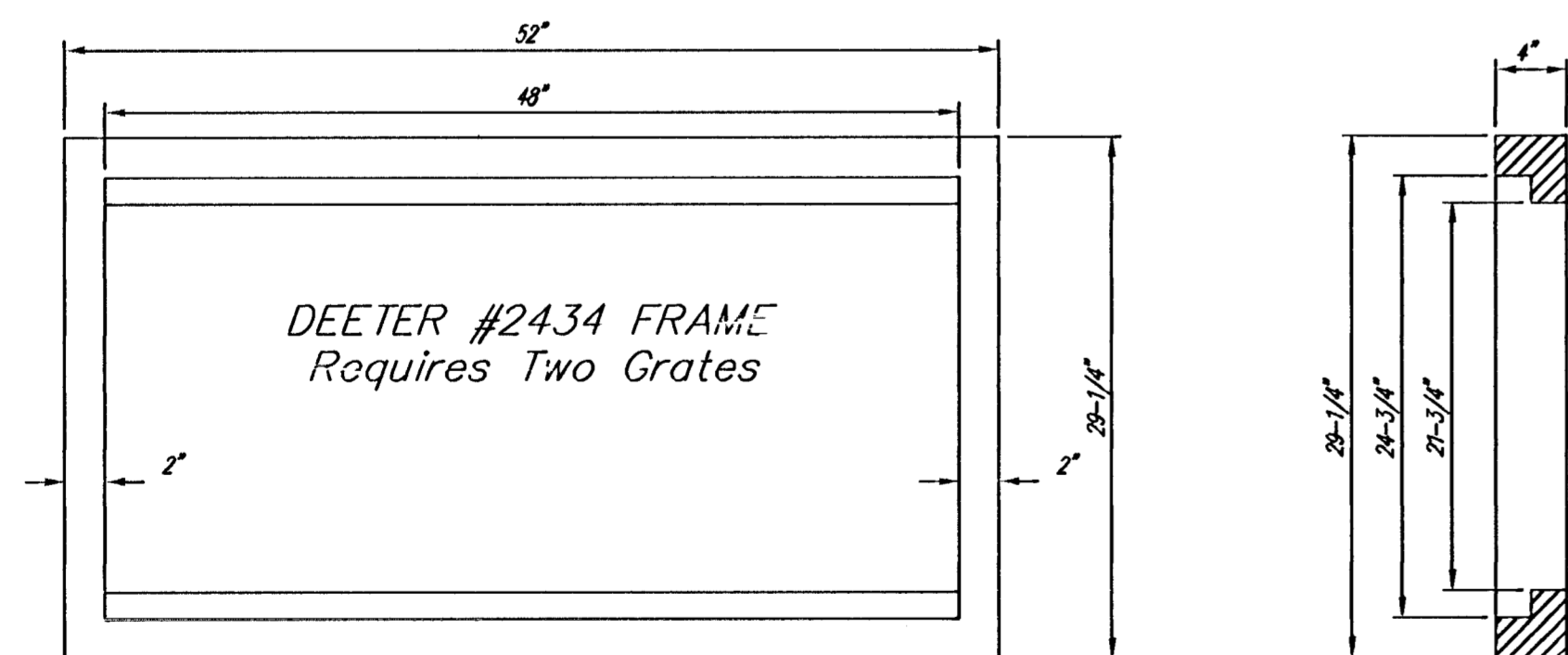
SHEET NO. D-2



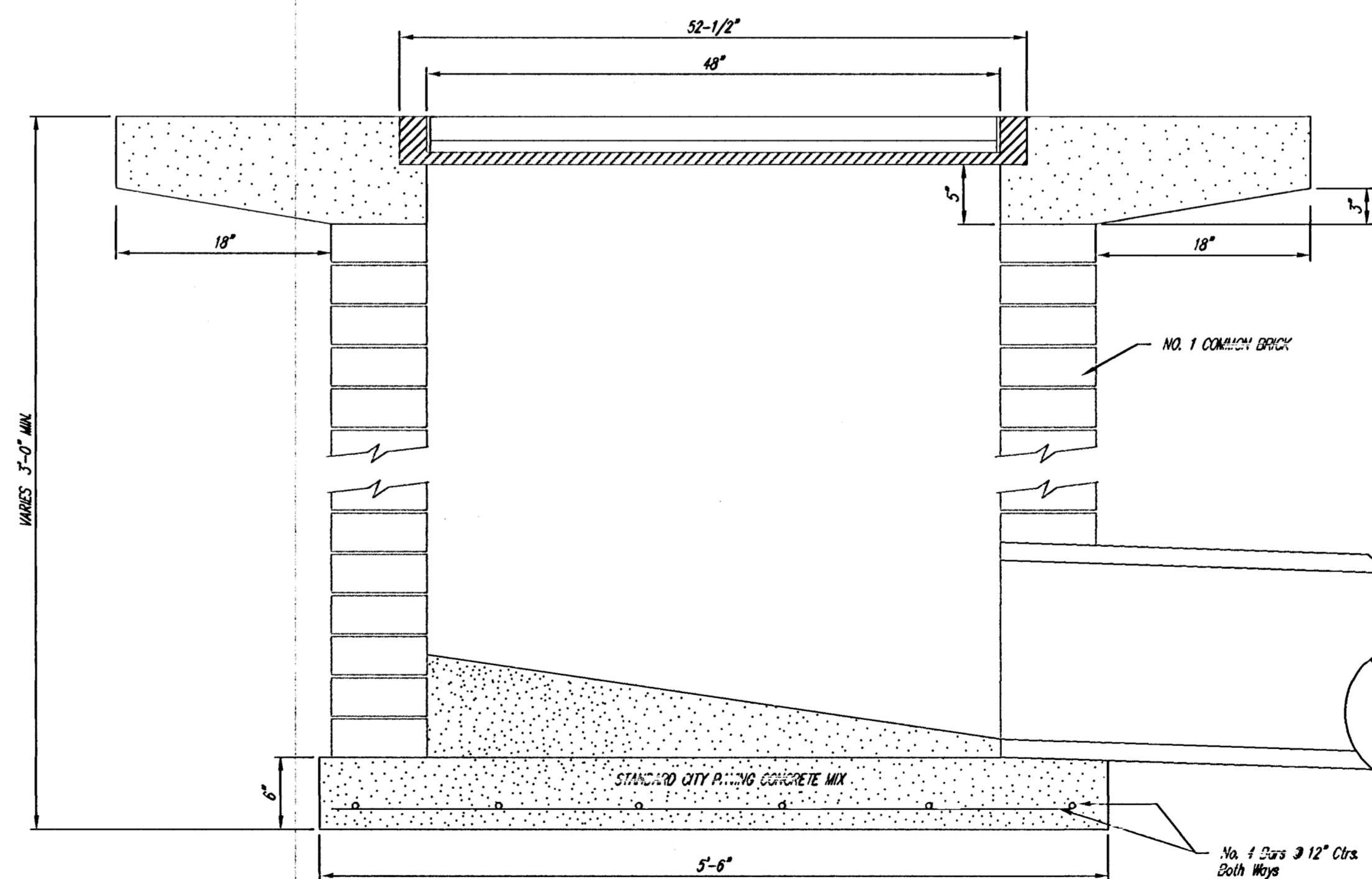
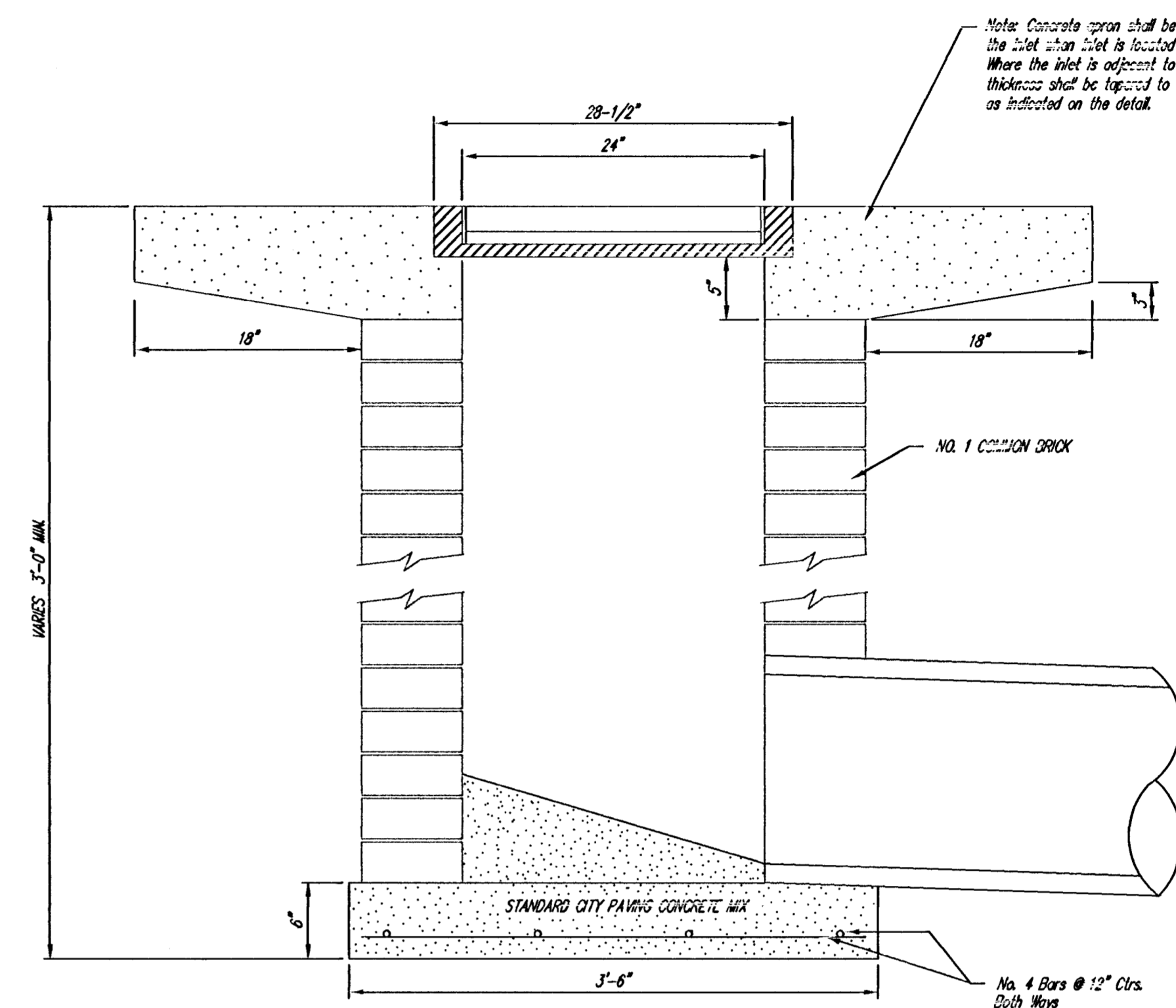
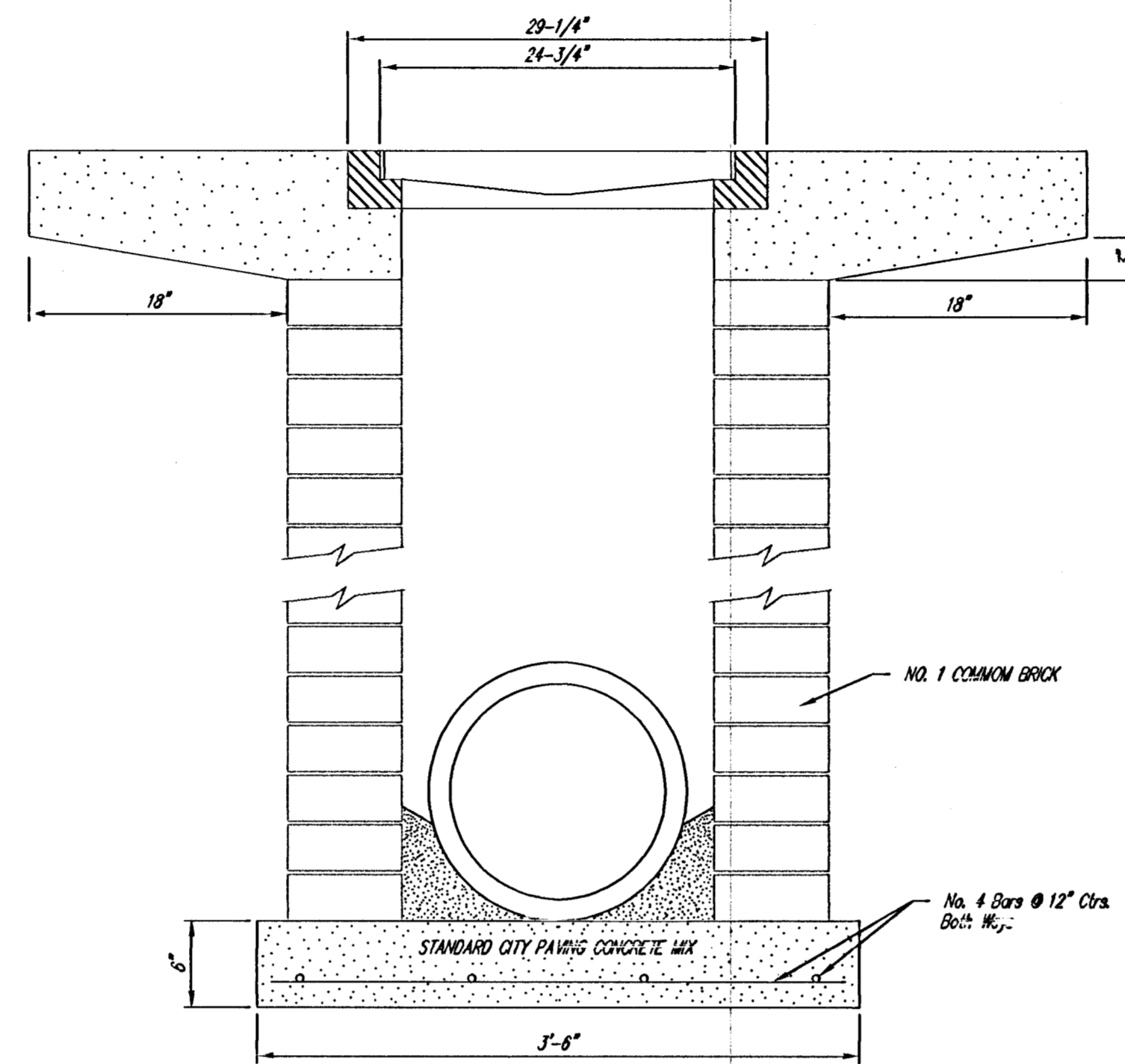
DEETER #2433 GRATE

24" x 24" Frame and Grate Detail

NOTE: Grates shall be imprinted on the top surface with "CITY OF WICHITA" using letters at least 1" in height. Other marking methods may be approved by the engineer.



Double 24" x 24" Frame Detail



<p>THE CITY OF WICHITA</p> <p>CITY ENGINEER'S OFFICE CITY HALL - SEVENTH FLOOR 455 NORTH MAIN STREET WICHITA, KANSAS 67202 (316) 268-4561 (316) 268-4114 FAX</p>	DROP INLET	
	2' X 2 1/2' X 4'	
	M. E. LINDEGAK P.E. - CITY ENGINEER	
	PROJECT NUMBER XXX-XXXX	INDEX CODE XXXXXX
DATE JUNE 97	D-3	