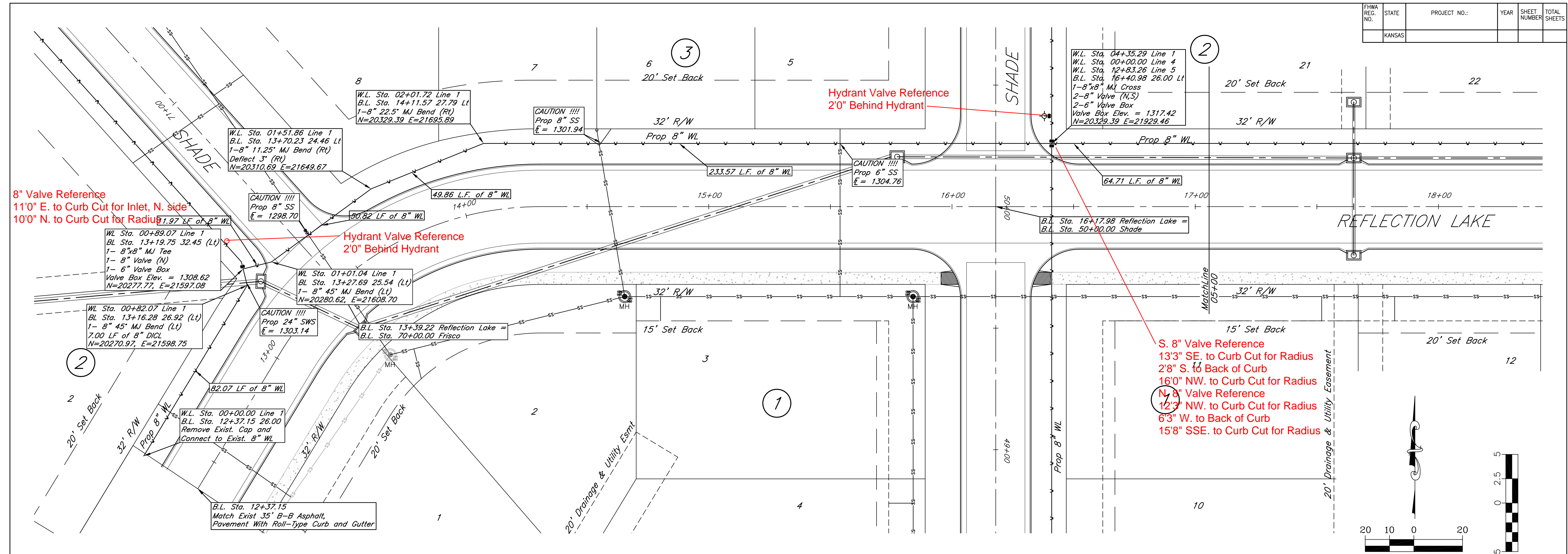


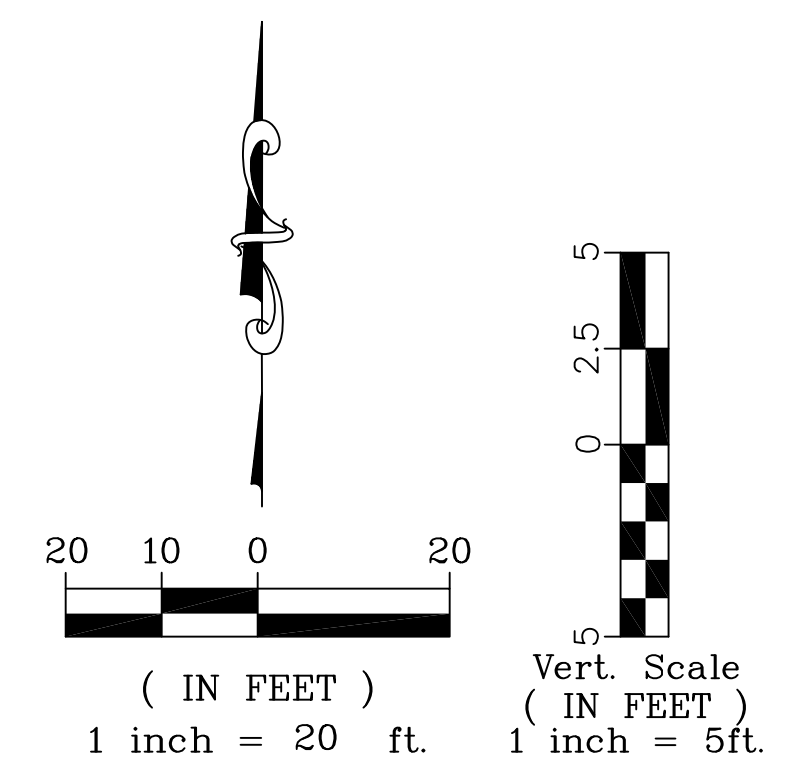
FHWA REG. NO.	STATE	PROJECT NO.:	YEAR	SHEET NUMBER	TOTAL SHEETS
	KANSAS			2	11



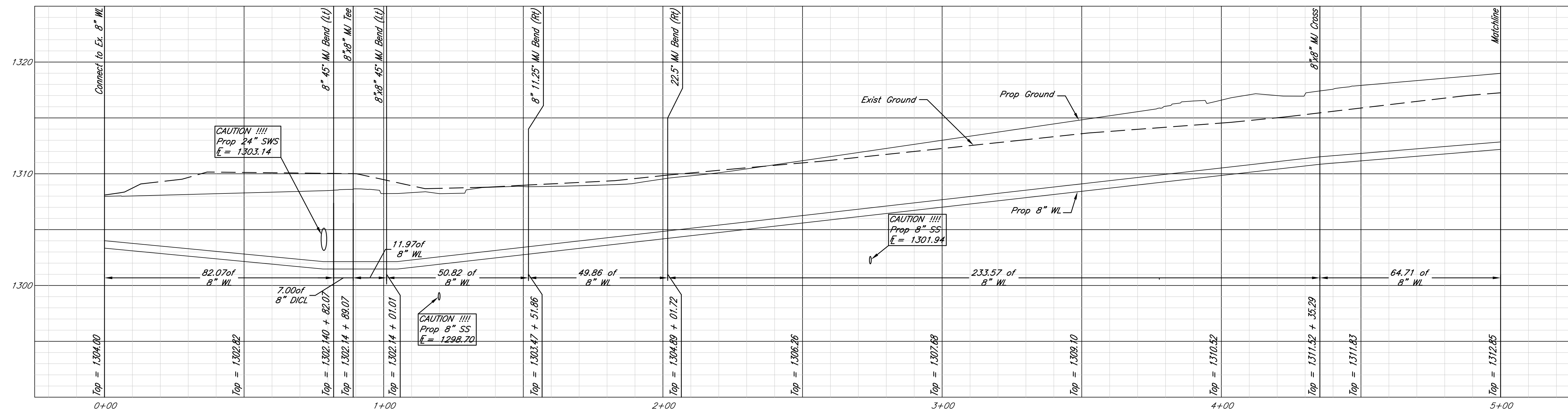
8" Valve Reference
11'0" E. to Curb Cut for Inlet, N. side
10'0" N. to Curb Cut for Radius


Hydrant Valve Reference
2'0" Behind Hydrant

S. 8" Valve Reference
13'3" SE. to Curb Cut for Radius
2'8" S. to Back of Curb
16'0" NW. to Curb Cut for Radius
N. 8" Valve Reference
12'3" NW. to Curb Cut for Radius
6'3" W. to Back of Curb
15'8" SSE. to Curb Cut for Radius



RECORD DRAWING
3-29-2010





 316/284-0242
 515 S. Wichita
 Wichita, KS 67202

Reflection Lake 3rd Addition
 Line 1 00+00 - 05+00
 Andover, Kansas

KEM NO. 06128	FILE water
DESIGN KM	DRAWN NS
DATE 5/2008	REVISED 03/13/09

PROJECT NUMBER
 SHEET
 2
 OF
 11