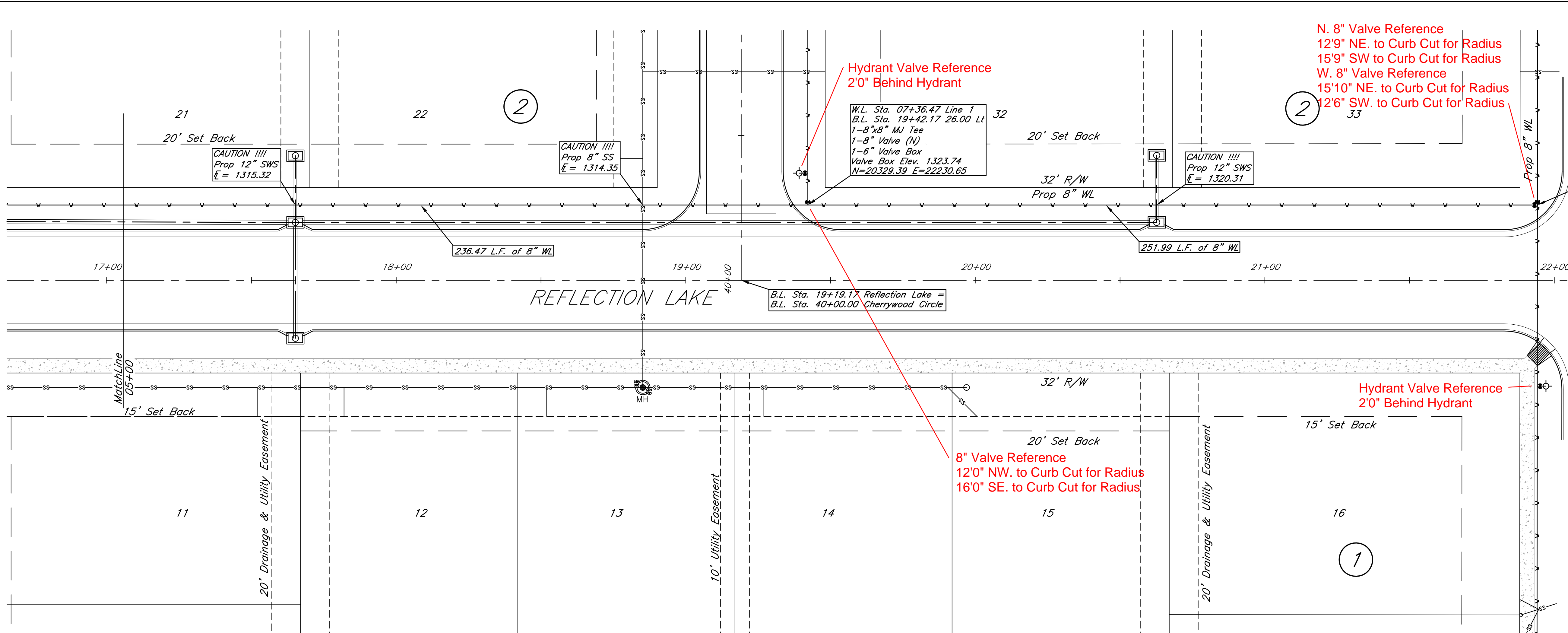


FHWA REG. NO.	STATE	PROJECT NO.:	YEAR	SHEET NUMBER	TOTAL SHEETS
	KANSAS				

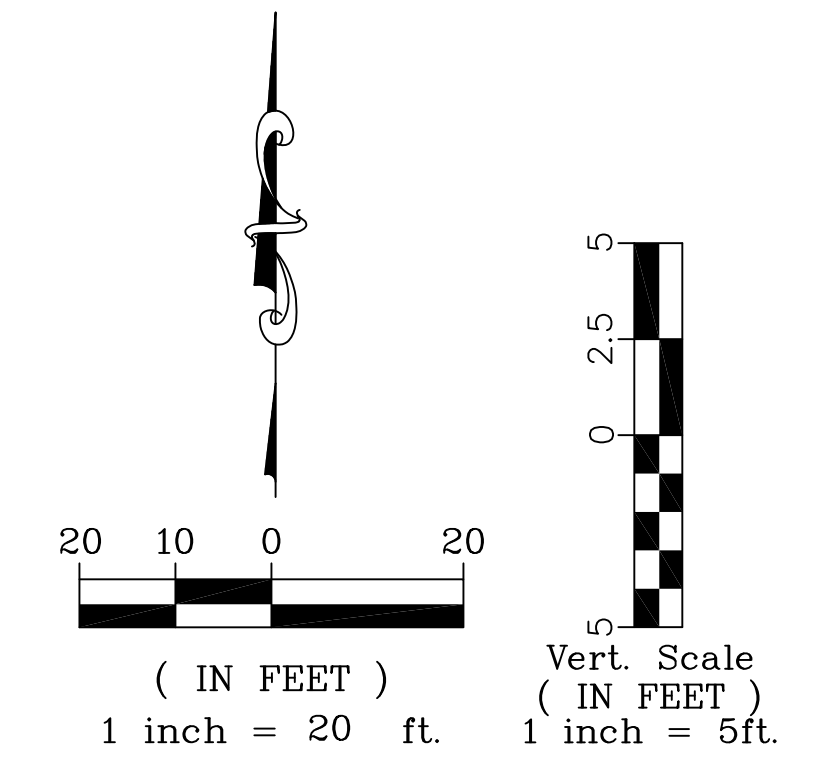


N. 8" Valve Reference
 12'9" NE. to Curb Cut for Radius
 15'9" SW to Curb Cut for Radius
 W. 8" Valve Reference
 15'10" NE. to Curb Cut for Radius
 12'6" SW. to Curb Cut for Radius

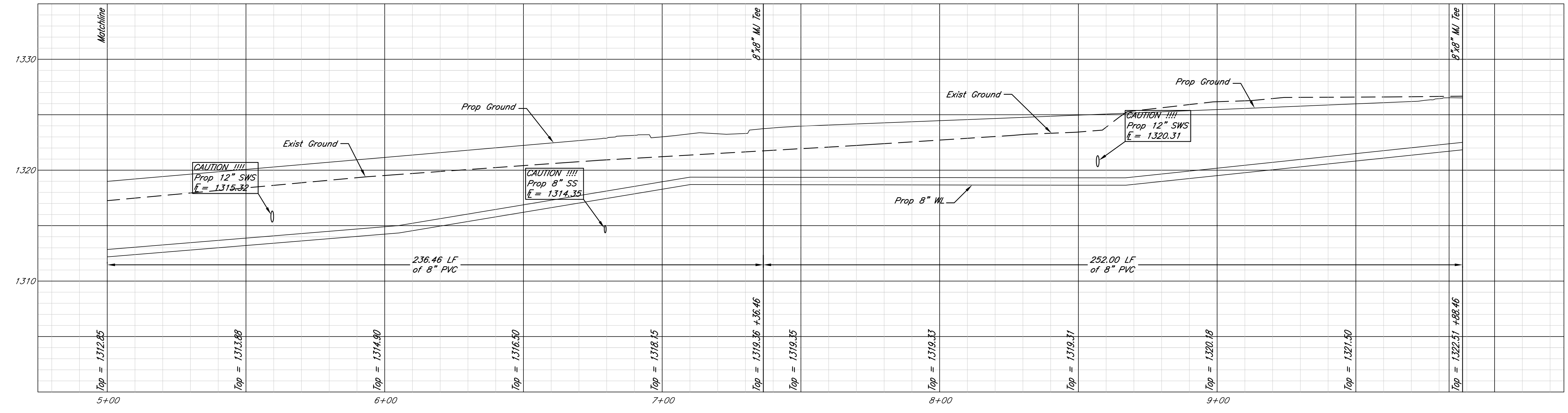
Hydrant Valve Reference
 2'0" Behind Hydrant

Hydrant Valve Reference
 2'0" Behind Hydrant

8" Valve Reference
 12'0" NW. to Curb Cut for Radius
 16'0" SE. to Curb Cut for Radius



RECORD DRAWING
 3-29-2010



kemiller
engineering

516 S. Market,
Wichita, KS 67202
316/764-0242

Reflection Lake 3rd Addition
 Line 1 05+00 - 09+84
 Andover, Kansas

KEM NO 06128	FILE water
DESIGN KM	DRAWN NS
DATE 5/2008	REVISED

PROJECT NUMBER
SHEET
3
of
11