

**CURVE #12**  
Curve Data Based on Centerline  
Rad. = 425' Delta = 16°00'24" Tangent = 59.76'  
Arc = 118.73' L.C. = 118.35' Def/Ft. = 4.04447 Min.

Station	Arc	FACE CHORD LENGTHS		Defl.	T. Defl.
		8 Lt.	8 Rt.		
22+50.67	-	-	-	0°00'00"	0°00'00"
22+75.00	24.33'	25.76'	22.90'	1°38'24"	1°38'24"
23+00.00	25.00'	26.47'	23.53'	1°41'07"	3°19'31"
23+25.00	25.00'	26.47'	23.53'	1°41'07"	5°00'38"
23+50.00	25.00'	26.47'	23.53'	1°41'07"	6°41'45"
23+69.40	19.40'	20.54'	18.26'	1°18'28"	8°00'13"

**CURVE #13**  
Curve Data Based on Centerline  
Rad. = 350' Delta = 29°00'00" Tangent = 90.52'  
Arc = 177.15' L.C. = 175.27' Def/Ft. = 4.91109 Min.

Station	Arc	FACE CHORD LENGTHS		Defl.	T. Defl.
		8 Lt.	8 Rt.		
24+19.42	-	-	-	0°00'00"	0°00'00"
24+25.00	5.58'	5.18'	5.98'	0°27'24"	0°27'24"
24+50.00	25.00'	23.21'	26.78'	2°02'46"	2°30'11"
24+75.00	25.00'	23.21'	26.78'	2°02'46"	4°32'57"
25+00.00	25.00'	23.21'	26.78'	2°02'46"	6°35'44"
25+25.00	25.00'	23.21'	26.78'	2°02'46"	8°38'31"
25+50.00	25.00'	23.21'	26.78'	2°02'46"	10°41'17"
25+75.00	25.00'	23.21'	26.78'	2°02'46"	12°44'03"
25+96.57	21.57'	20.03'	23.11'	1°45'56"	14°29'59"

**CURVE #14**  
Curve Data Based on Centerline  
Rad. = 358.66' Delta = 13°00'00" Tangent = 40.86'  
Arc = 81.38' L.C. = 81.20' Def/Ft. = 4.79233 Min.

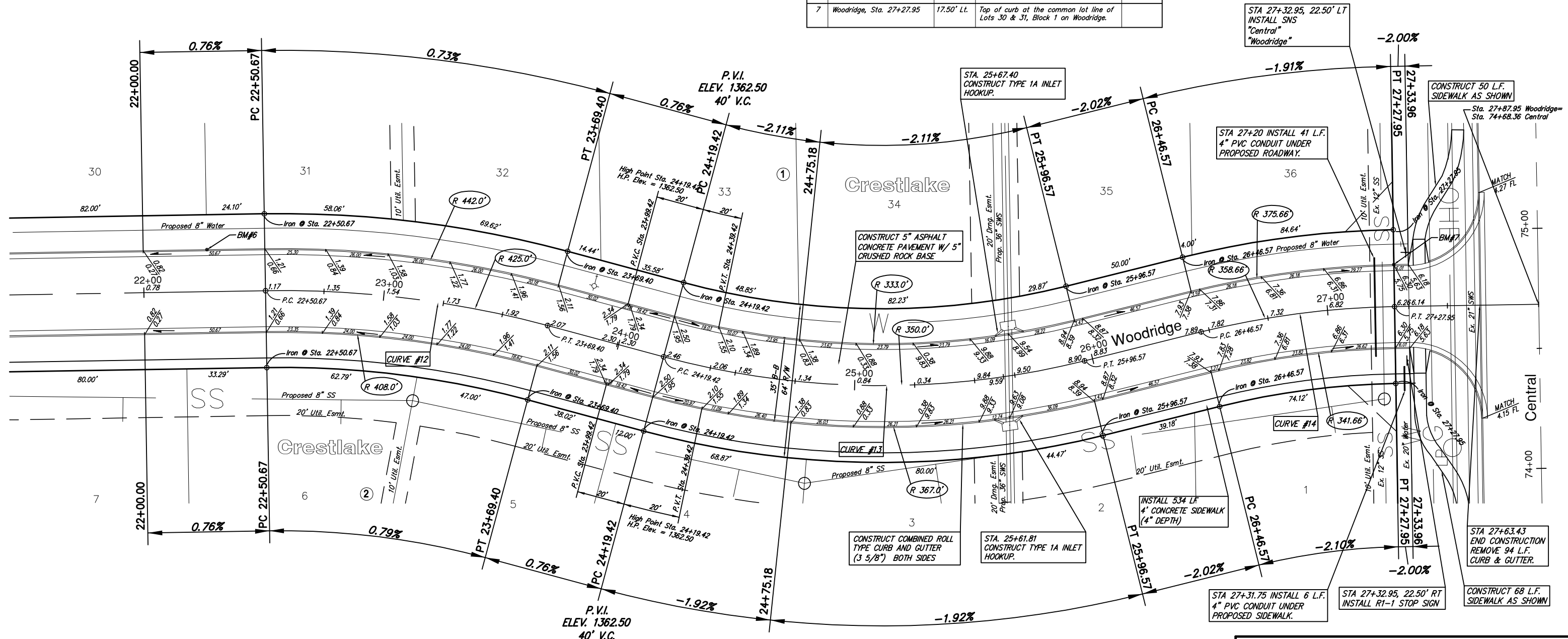
Station	Arc	FACE CHORD LENGTHS		Defl.	T. Defl.
		8 Lt.	8 Rt.		
26+46.57	-	-	-	0°00'00"	0°00'00"
26+50.00	3.43'	3.67'	3.19'	0°16'26"	0°16'26"
26+75.00	25.00'	26.74'	23.25'	1°59'48"	2°16'15"
27+00.00	25.00'	26.74'	23.25'	1°59'48"	4°16'03"
27+27.95	27.95'	29.89'	25.99'	2°13'57"	6°30'00"

Subdivision Bench Marks

No.	Street and Station	From CL	Description	Elevation
6	Woodridge, Sta. 22+26.57	17.50' Lt.	N.E. End of Curb at the Intersection of Woodridge and Central.	
7	Woodridge, Sta. 27+27.95	17.50' Lt.	Top of curb at the common lot line of Lots 30 & 31, Block 1 on Woodridge.	



SCALE 1" = 20'  
IRON = •



NOTE: ROLL TYPE CURB AND GUTTER TO BE CONSTRUCTED ALONG PAVEMENT DEPICTED ON THIS SHEET

Crestlake  
Bracken/ Troon/ Woodridge  
WICHITA, KANSAS

**Ruggles & Bohm, P.A.**  
Engineering, Surveying, Land Planning

924 North Main (316) 264-8008  
Wichita, Kansas 67203 (316) 264-4621 fax  
www.rbkansas.com E-mail: info@rbkansas.com

DESIGN	AML	9 OF 40
DRAWN	MLP	
REVIEW		
UTILITY		
DRAWING FILE	PROJECT NUMBER	DATE
paving {BTWS}	472-84406	May 25, 2006