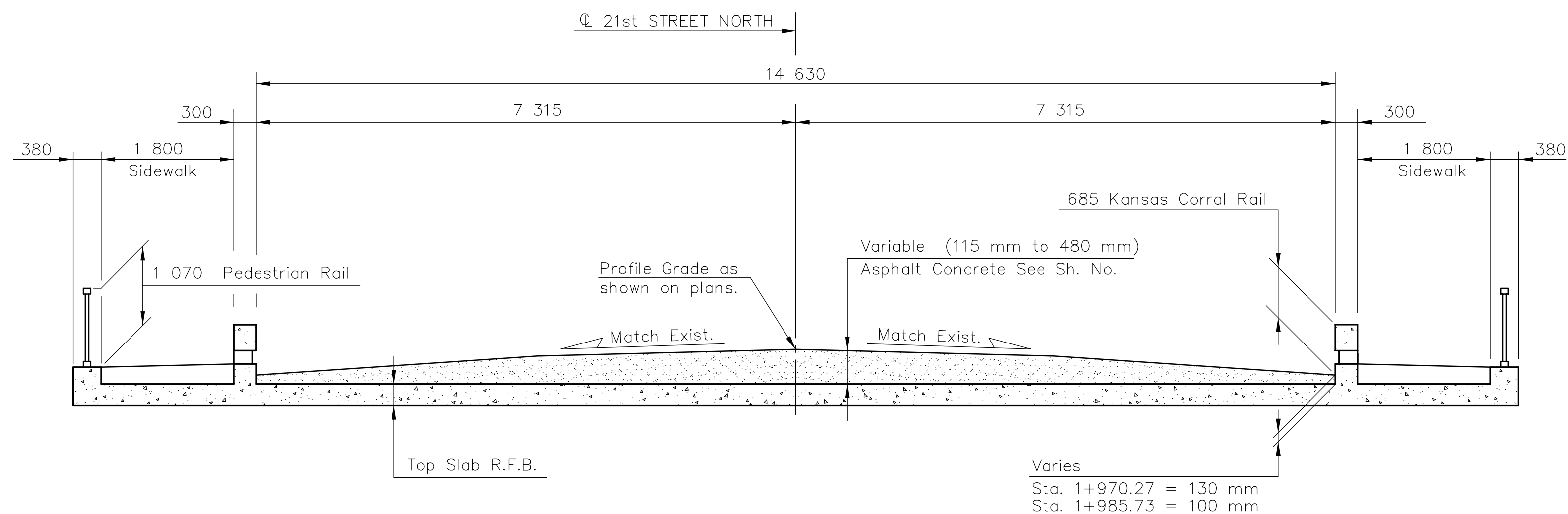
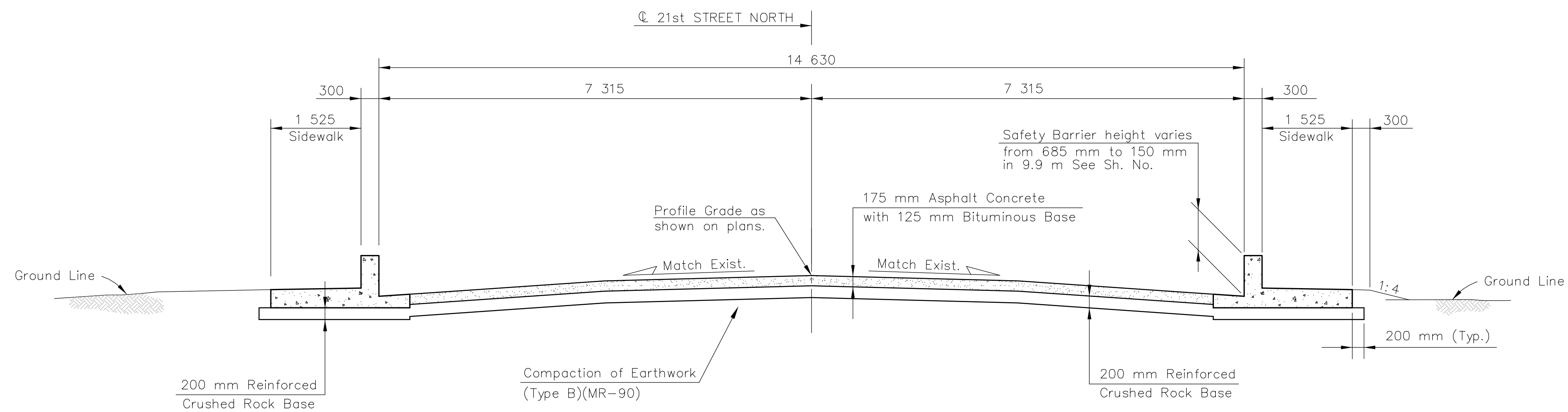


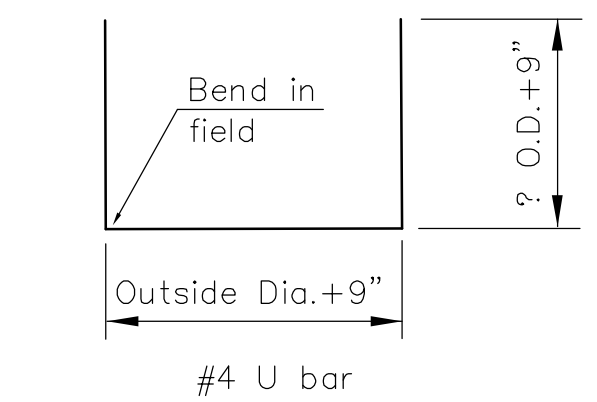
F.H.W.A. REGION NO.	STATE	PROJECT NO.	YEAR	SHEET NO.	TOTAL SHEETS
7	KANSAS	87 N-0240-01	2004	2	42



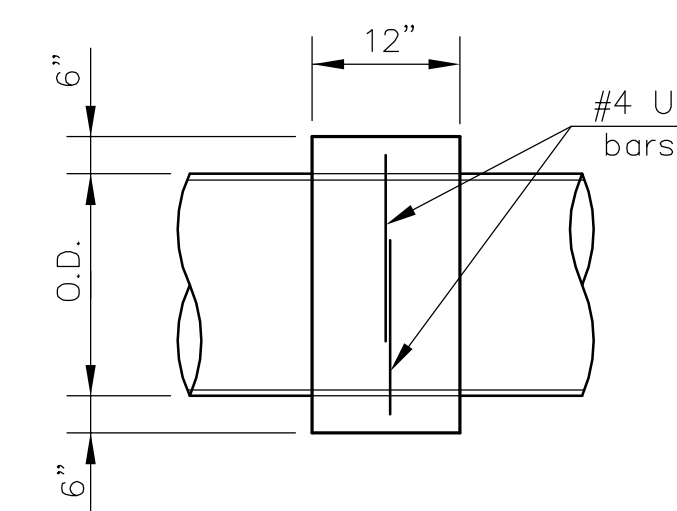
TYPICAL SECTION THRU STRUCTURE
21st STREET NORTH
 Sta. 1+970.27 to Sta. 1+985.73



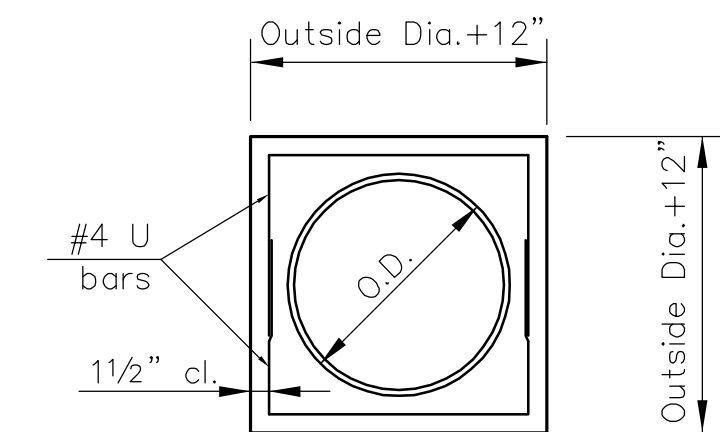
TYPICAL SECTION
21st STREET NORTH
 Sta. 1+960.37 to Sta. 1+970.27 &
 Sta. 1+985.73 to Sta. 1+995.63



BENDING DIAGRAM



SIDE ELEVATION



FRONT ELEVATION

COLLAR DETAIL

Sta. 1+969.4 Rt.
 Sta. 1+985.9 Rt.

Use Class B concrete or concrete mix used for other items on the project. All labor and material for connection to existing to existing storm sewer shall be Subsidiary to other items of the Contract.

GENERAL NOTES

PUBLIC AND PRIVATE UTILITY FACILITIES SHALL BE MOVED OR ADJUSTED AS NECESSARY BY THE OWNERS TO FIT THE NEW CONSTRUCTION UNLESS OTHERWISE NOTED ON THE PLANS OR IN THE PROPOSAL.

ALL SAW CUTS SHOWN ON THE PLANS SHALL NOT BE PAID FOR DIRECTLY, BUT SHALL BE CONSIDERED SUBSIDIARY TO OTHER ITEMS OF THE CONTRACT. THE DEPTH OF THE CUT SHALL BE FULL DEPTH.

ALL EASEMENTS, AND ADDITIONAL RIGHT-OF-WAY SHALL BE FURNISHED BY THE CITY.

EXCAVATION SHOWN TO BE WASTED SHALL BE WASTED ON SITES PROVIDED BY THE CONTRACTOR. THESE SITES SHALL BE APPROVED BY THE ENGINEER AS TO SUITABILITY, APPEARANCE, AND SITE LOCATION. LOCATIONS THAT, IN THE OPINION OF THE ENGINEER, WILL LEAVE AN UNSIGHTLY APPEARANCE WILL NOT BE APPROVED.

ALL DISPOSAL SITES MUST BE APPROVED BY THE KANSAS DEPARTMENT OF HEALTH AND ENVIRONMENT. MATERIAL EITHER STOCKPILED OR DISPOSED OF IN A FLOOD PLAIN WOULD REQUIRE A KANSAS STATE BOARD OF AGRICULTURE PERMIT. ANY MATERIAL DUMPED IN WATERS OF THE UNITED STATES OR WETLANDS IS SUBJECT TO U.S. CORPS OF ENGINEERS PERMITTING REGULATIONS.

ANY MATERIAL BURIED OR STOCKPILED BEYOND APPROVED CONSTRUCTION LIMITS WOULD REQUIRE ADDITIONAL ARCHEOLOGICAL INVESTIGATIONS UNLESS BURIED IN A PREVIOUSLY APPROVED BORROW LOCATION.

EXISTING PAVEMENT (CONCRETE AND ASPHALT) EXCAVATED AS PART OF THIS PROJECT SHALL BECOME THE PROPERTY OF THE CONTRACTOR AND BE DISPOSED OF ON SITES APPROVED BY THE ENGINEER.

Drawn by: J:\02518\Typical
 Plotted: 1:100 (P5)

PROJECT NO. 87 N-0240-01
TYPICAL SECTIONS
21st STREET NORTH OVER
TRIB. WEST BRANCH CHISHOLM CREEK
(WEST DRAIN)

DESIGNED	SCALE NO SCALE
DATE	DATE
QUANTITIES	SHEET OF

CITY OF WICHITA
 SEDGWICK COUNTY